



## DEEP JOY — CARVER



**Судостроитель:** CARVER

**Год постройки:** 1997

**Модель:** Моторная яхта

**Цена:** \$84,500 USD Продано

**Местонахождение:** United States

**Длина общая:** 35' 0" (10.67m)

**Ширина:** 12' 9" (3.89m)

**Макс. осадка:** 3' 1" (0.94m)

Купить **Deep Joy — CARVER** а также выбрать подходящую вам яхту из нашего каталога яхт вам поможет опытный яхтенный брокер Андрей Шестаков. На сегодняшний день компания **Atlantic Yacht and Ship Inc.** имеет большое количество яхт в собственном списке продаж, а также тесно сотрудничает со всеми крупными яхтенными производителями по всему миру.

Для того чтобы купить яхту **Deep Joy — CARVER** а также проконсультироваться по любому вопросу связанному с покупкой, продажей, чартером яхт позвоните по телефону **8 800 234-4456** (бесплатно по РФ).

# ОГЛАВЛЕНИЕ

---

ОГЛАВЛЕНИЕ	2
ХАРАКТЕРИСТИКИ	3
Обзор	3
Основная информация	5
Размеры	5
Скорость, вместимость и масса	5
Размещение	6
Корпус и палуба	6
Информация о двигателе	6
ФОТОГРАФИИ	7
КОНТАКТЫ	11
Контактная информация	11
Телефоны	11
Время работы	11
Адрес	11

# ХАРАКТЕРИСТИКИ

## Обзор

Deep Joy has been lovingly taken care of by one owner. Her flybridge, which seats up to 8 is accessed by two stairways or an interior hatch from the main cabin. She has protected walkways to the bow, which helps give peace of mind when families and friends are on board. The flybridge has a wet bar, refrigerator and a fully enclosed bimini. Her interior is spacious and nicely laid out. The U-shaped salon and L-shaped settee across from it, can seat up to eight people comfortably. The galley is nicely appointed with a 3/4 size fridge, hot and cold sink, 2 burner stove and microwave with carousel. Her head is very large for a boat this size, with an exceptionally large shower. It has a common entrance from the galley area and a private access from the owners cabin. **Boat Name** Deep Joy **Dimensions** LOA: 35 ft 0 in Beam: 12 ft 9 in Maximum Draft: 3 ft 1 in Displacement: 17414 lbs Bridge Clearance: 11 ft 3 in **Engines** Engine 1: Engine Brand: Crusader Year Built: 1997 Engine Model: 5.7L V-8 350XL HT Engine Type: Inboard Engine/Fuel Type: Gas/Petrol Location: Starboard Drive Type: V Drive Engine(s) Total Power: 265 HP Engine 2: Engine Brand: Crusader Year Built: 1997 Engine Model: 5.7L V-8 350XL HT Engine Type: Inboard Engine/Fuel Type: Gas/Petrol Location: Port Drive Type: V Drive Engine(s) Total Power: 265 HP **Tanks** Fresh Water Tanks: (75 Gallons) Fuel Tanks: (246 Gallons) Holding Tanks: (20 Gallons) **Accommodations** Number of single berths: 1 Number of double berths: 1 Number of cabins: 1 Number of heads: 1 Seating Capacity: 8 **Electronics** GPS - 2 - Garmin GPS 232 and handheld Garmin 48 TV set - JVC 22inches Autopilot - Autohelm ST 5000 Radio - Kenwood KDC-2006 in the cabin Compass - 2 - Ritchie 4 Depthsounder - Lowrance 350 Cockpit speakers - 4 - 6inches on flybridge VHF - 2 - Uniden Solara DSC & Uniden handheld CD player - Clarion Magitune CE Net Log-speedometer **Inside Equipment** Refrigerator - 2 - Galley, Norcold DE561 & flybridge Norcold DC-3400-F Heating Hot water Marine head Air conditioning Electric bilge pump - 2 - 1 standard and 1 backup Microwave oven - Sharp Carousel **Electrical Equipment** Shore power inlet Generator - 6.5kw Kohler Gen set **Outside Equipment/Extras** Swimming ladder - Off swim platform Cockpit cushions - In very good shape Cockpit shower - hot and cold Gangway Electric windlass **Covers** Bimini Top - Fully enclosing flybridge

## Coming aboard

When stepping on board you find an cluttered cockpit and a transom door out to the swim platform. There is a hot and cold shower and 2 stairways to the fly bridge. The cockpit floor gives complete access to it's Crusader engines, by opening 2 hinged and hydraulically supported hatches, as well as, a center hatch which can be completely removed.

Going up the stairs brings you to the bimini enclosed helm with ample seating inside. There is a hatch that will take you down into the cabin. When going to the bow you walk through a protected passageway, which joins seamlessly with the bow pulpit. Up in the bow a comfy loveseat awaits for the best ride and view on the boat! Anchoring is made easy with it's Maxwell windlass and there are 2 wells to either side for more storage.

## Walk through

Opening the patio sized sliding glass door, you step down 3 steps into a spacious cabin with the open U-shaped salon to port and a settee to starboard. Every thought has gone into this cabin to make it feel like you're in your living room, with friends or family enjoying pleasant conversation. Yet, here you can take your living room with you to a quiet cove and dine in class! She has a well appointed galley just forward of the salon and the home sized head to starboard, just opposite the galley. Moving forward past the galley is the well lit owner's cabin with custom queen sized bed. There is a seating area with storage to port, more storage under the bed and a private entrance into the head.

## Accommodations

Deep Joy's salon table can be lowered to create a large twin bunk and the settee to starboard converts to a single birth. Moving forward into the owner's cabin is a raised queen sized bed and the bench seat to port can double as a step up, if need be. There are plenty of accent pillows to place around and extra bed linens are included. She has wall to wall carpeting in great shape, maple cabinetry and cloth interior design accents to soften the feel of the cabin. Many extras are included with Deep Joy's complement. AC & Heat run off either the 6.5kw Kohler generator or shore power.

## Galley

The galley has an enameled sink, usable counter space with a 2 burner Princess electric stove (6.5kw Kohler generator), Sharp Carousel microwave, in-cabinet Black and Decker coffee maker and a 3/4 sized side access refrigerator/freezer. There is plenty of storage with a wine glass rack included.

## Head

There are two doors to the head, one opposite the galley and an entrance from the owners cabin. Upon entering the uncommonly large bathroom, you find the vanity and Corian countertop with enamel sink to the left and storage below. The head is to the right working with a holding tank or overboard discharge. The extra large hot and cold shower with glass accordion sliding doors has a molded in seat that wraps around into a low shelf. There is a convenient grab rail which runs the full length of the shower and a shelf above. The bathroom floor is covered in a convenient anti-slip textured pattern.

## Additional Accessories

- Fujinon Binoculars
- Dehumidifier
- Royal Mariner Barometer

## Основная информация

**Тип судна:** Моторная яхта

**Модельный год:** 1997

**Год постройки:** 1997

**Страна:** United States

**Открытая палуба мостика:** Да

## Размеры

**Длина общая:** 35' 0" (10.67m)

**Ширина:** 12' 9" (3.89m)

**Макс. осадка:** 3' 1" (0.94m)

**Трапы:** 11' 3" (3.43m)

## Скорость, вместимость и масса

**Водоизмещение:** 17414 Pounds

**Вместимость воды:** 75 Gallons

**Вместимость сточного бака:** 20 Gallons

**Объем топливного бака:** 246 Gallons

## Размещение

---

Всего кают: 1

## Корпус и палуба

---

Материал корпуса: Fiberglass

## Информация о двигателе

---

Двигатели: 2

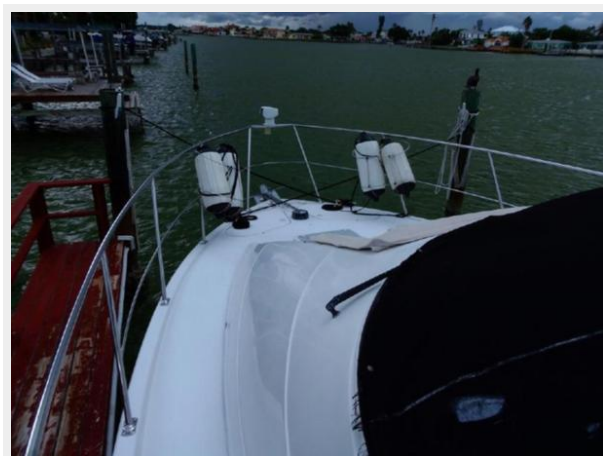
Производитель: Crusader

Модель: 5.7L V-8 350XL HT

Тип двигателя: Inboard

Тип топлива: Gas/Petrol

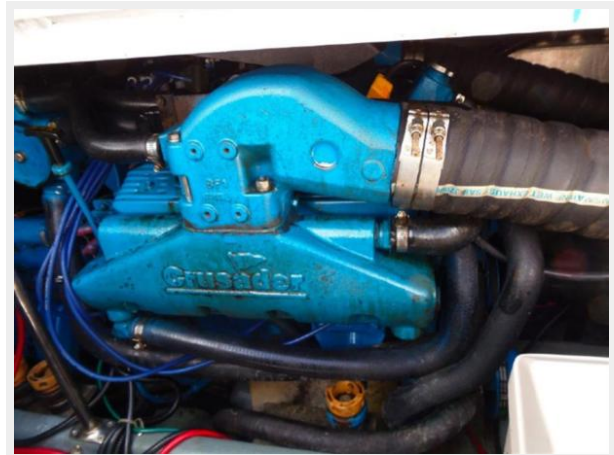
# ФОТОГРАФИИ

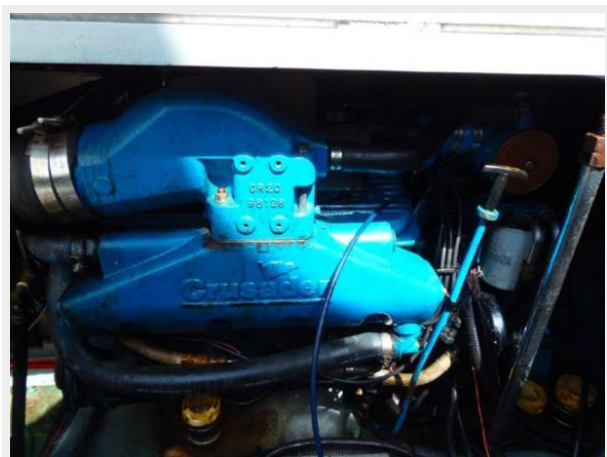












# КОНТАКТЫ

---

Андрей Шестаков (Andrey Shestakov) – ведущий яхтенный брокер отдела продаж яхт и судов компании Atlantic Yacht and Ship Inc. Официальный представитель Atlantic Yacht and Ship Inc. для русскоговорящих клиентов в центральном офисе компании в Майами/Форт Лодердейл/Флорида/США.

## Контактная информация

---

Email: [info@atlanticyachtandship.ru](mailto:info@atlanticyachtandship.ru)

Web: [www.atlanticyachtandship.ru](http://www.atlanticyachtandship.ru)

## Телефоны

---

Бесплатный звонок по России: **8 800 234-4456**

Москва и Московская область: **+7 495 766-6268**

Краснодарский край: **+7 918 465-6644**

США, Майами, Флорида: **+1 954 274-4435**

## Время работы

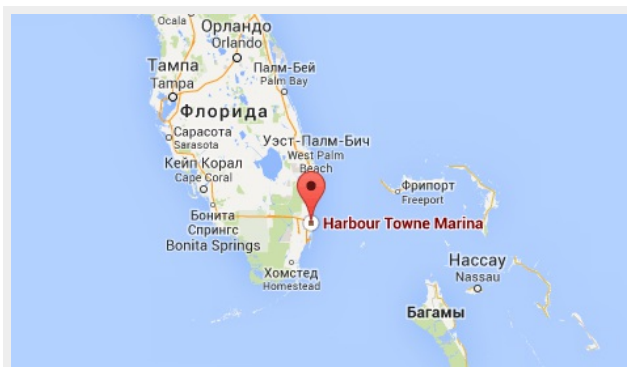
---

Понедельник – Суббота: **9:00 - 21:00 EDT**

Воскресенье: **Закрыто**

## Адрес

---



Harbour Towne Marina, 850 NE 3rd St,  
STE 213, Dania, FL 33004