



O'NEIRO — GOLDEN YACHTS



Builder: GOLDEN YACHTS

Year Built: 2008

Model: Motor Yacht

Price: 17 400 000 € EUR

Location: Greece

LOA: 172' 11" (52.70m)

Beam: 30' 3" (9.20m)

Max Draft: 9' 5" (2.85m)

Cruise Speed: 16 Kts. (18 MPH)

Max Speed: 18 Kts. (21 MPH)

Our experienced yacht broker, Andrey Shestakov, will help you choose and buy a yacht that best suits your needs O'NEIRO — GOLDEN YACHTS from our catalogue. Presently, at Atlantic Yacht and Ship Inc., we have a wide variety of yachts available on our sale's list. We also work in close contact with all the big yacht manufacturers from all over the world.

If you would like to buy a yacht O'NEIRO — GOLDEN YACHTS or would like help answering any questions concerning purchasing, selling or chartering a yacht, please call +1 954 274-4435

TABLE OF CONTENTS

TABLE OF CONTENTS	2
SPECIFICATIONS	4
Basic Information	4
Dimensions	4
Speed, Capacities and Weight	4
Accommodations	4
Hull and Deck Information	5
Engine Information	5
DETAILED INFORMATION	6
Accommodations	6
Vessel Walkthrough	6
Main Characteristics	6
Capacities, Speed and Range	7
Mechanical and Engine Equipment	8
Control and Monitoring System	9
Communications and Navigation Equipment	9
Entertainment Systems	11
Galley and Laundry Equipment	12
Deck Equipment	13
Security, Fire Fighting and Safety Equipment	13
Tenders & Toys	14
Other Equipment	14
Note	14
Exclusions	14
Disclaimer	15
PHOTOS	16
Large aft deck	16
Aft deck dining	16

Salon looking aft	16
Salon	16
Salon	16
Dining looking aft to salon	16
Dining	17
Galley	17
Master with his and hers baths	17
Master	17
VIP stateroom	17
Double guest	17
Twin guest	18
Twin guest	18
Skylounge	18
Skylounge - TV	18
Sundeck	18
Sundeck looking aft	18
Sundeck looking fwd	19
Jacuzzi at night	19
Foredeck lounge	19
Swim platform	19
Aerial shot	19
O'NEIRO at night	19
GA	20
CONTACTS	21
Contact details	21
Telephones	21
Office hours	21
Address	21

SPECIFICATIONS

Basic Information

Category: Motor Yacht

Model Year: 2008

Year Built: 2008

Country: Greece

Dimensions

LOA: 172' 11" (52.70m)

Beam: 30' 3" (9.20m)

Max Draft: 9' 5" (2.85m)

Speed, Capacities and Weight

Cruise Speed: 16 Kts. (18 MPH)

Cruise Speed RPM: 1680 Kts.

Cruise Speed Range: 3400

Max Speed: 18 Kts. (21 MPH)

Max Speed RPM: 2000 Kts.

Gross Tonnage: 545 Pounds

Water Capacity: 8999.813467536 Gallons

Holding Tank: 1079.935348576 Gallons

Fuel Capacity: 27786.93728962 Gallons

Accommodations

Total Cabins: 7

Sleeps: 14

Total Heads: 9

Captain Cabin: True

Crew Cabin: 6

Crew Sleeps: 11

Crew Heads: 6

Hull and Deck Information

Hull Material: Steel

Deck Material: Teak

Hull Configuration: Semi-Displacement

Hull Color: Dark blue

Hull Designer: Hydrotec S.A., Italy

Exterior Designer: Giogio Vafiadis & Associates, Italy

Interior Designer: Giorgio Vafiadis & Associated, Italy

Engine Information

Engines: 2

Manufacturer: MTU

Model: 12V 4000, M70

Engine Type: Inboard

Fuel Type: Diesel

DETAILED INFORMATION

Accommodations

Owner: 1 large owner's suite located on the main deck with king size bed, ensuite bathroom including Jacuzzi and shower room, and walk-in wardrobe. **Guests:** Main Deck: 1 Twin guest cabin with ensuite bathroom **Lower Deck:** 2 x VIP guest suites including ensuite bathroom with Jacuzzi 2 x Twin guest cabins with ensuite bathroom **Upper Deck:** 1 x VIP guest suite with king size bed including ensuite bathroom with Jacuzzi and shower room **Crew: 6 cabins** 1 x Captain's cabin located on the bridge deck with ensuite bathroom 5 x double crew cabins with ensuite bathroom 1 x crew lounge

Vessel Walkthrough

The Superyacht **O'NEIRO** is spacious, lavish and luxurious. Her layout is superb with the main aft deck facing the entrance into the salon and with staircases both to the left and right leading externally up to all decks. The extravagant O'Neiro salon instantly captivates you, with her quality oak and maple floors and elegant rugs, accompanying her exquisite furniture all surrounded by zebrano wood and wonderful large windows giving ample natural light. For your dining pleasure there is a beautiful wooden table comfortably seating twelve with a choice of comfy cushion director chairs and couches where guests can enjoy the delicious gourmet dishes prepared by the distinguished Chef and served by the elite crew. Prior to entering the Master cabin, on the left, is the stair-case leading down to the rest of the cabins. And, on the right, a door allowing embarkation and disembarkation of passengers from the starboard side. There are three great twin cabins and a superb VIP cabin. The twin cabins have Pullman berths and ensuite facilities with hand basin and shower. All have Satellite TV, DVD, CD and Stereo System.

Main Characteristics

Length Overall:	52.70m (172' 11")
Length at Waterline:	44.38m (145' 07")
Beam:	9.20m (30' 02")
Draft (Loaded):	2.85m (9' 04")
Year Completed:	June 2008
Model Year:	2008

Tonnage:	564 Ton
Displacement:	545 Ton
Flag:	Greek
Builder:	Golden Yachts
Naval Architect:	Hydrotec S.A., Italy
Exterior Design/Stylist:	Giorgio Vafiadis & Associates, Italy
Interior Designer/Stylist:	Giorgio Vafiadis & Assotiated, Italy
Hull Material:	Steel, Aluminum Superstructure
Deck Material:	Teak laid decks
Classifications:	MCA, ABS, AMS, A1 Commercial Yachting Services

Capacities, Speed and Range

Fuel:	105,185 litres (27,787 U.S. Gallons)
Water:	34,068 litres (9,000 U.S. Gallons)
Black Water:	1,669 litres (441 U.S. Gallons)
Grey Water:	4,088 litres (1,080 U.S. Gallons)
Watermaker:	14,002 litres (3,699 U.S. Gallons per day)
Speed:	Cruising 16 knots @ 1680 RPM Maximum 18 knots @ 2000 RPM
RANGE:	3,400 nm @ 10 knots

Mechanical and Engine Equipment

Main Engines: 2 x MTU

Engine Type: 12V4000 2000 RPM

Horsepower: 2200 hp each - 4850 hrs June 2017

Gearboxes for Main Engines: 2 x ZF 4660 4:1 with reverse reduction gear boxes

Propellers: Schaffran bronze alloy fixed pitch propellers

Generators & Electricity

Output: 175kW/1500 rpm each

Generators: 2 x CAT C9, 175kw, 1500 rpm diesel

Emergency generator: 1 x CAT 3304 85kw diesel generator 12,800 hrs June 2017

Shore Power: 150 kw/380 Volt with 14 kVA GE marine UPS system

Batteries: 6 x navigation and emergency battery sets

Air Conditioning:

Type: Technofreezer 700,000 BTU, 165kW (thermal) heating, ventilation and air conditioning marine system.

**Operating Conditions:
(Environmental)** Summer 38 degrees C D.B 80% RH, Winter 0 degrees C

(Internal) 23 degrees C D.B 50% RH, Winter 22 degrees C

Other Machinery

Watermaker: Intra Mare watermaker producing 14,000 litres (3,699 U.S. Gallons) per day

Stabilizers:	CMC anchor zero speed
Bow Thruster:	CMC 100kw double propeller proportional bow thruster
Steering System:	CMC electro hydraulic steering system
Stabilizer System:	4 fin stabilizer system
Fuel Separator and Filtration:	Alpha Laval MAB 103 mdo 900 l/h
Sewage System:	Hamman Black & Grey Water Treatment system, daily capacity 12,150 litres
WCS:	JETS Vacuum sanitation system throughout
Oil/Water Separator:	2 x M15 & 1 x MP25 vacumerators Blohm & Voss VM 500 capacity 500 litres/day
Fire/Bilge Pump:	G&R pumps bilge and fire-fighting system

Control and Monitoring System

- Collision Avoidance monitoring system by Golden A/S
- Control & monitoring consoles in engine room, bridge and crew mess
- Main engines, electric generator & auxiliary machinery
- Windows alarm system monitoring
- Level measuring system
- Bilge automatic control system
- Main switchboards control & monitoring
- Lighting remote control system

Communications and Navigation Equipment

Communication Systems

SATcom: Thrane & Thrane type F55

Router: Linksys for 3G connection

Communication Server & Ethernet

NM communication rack mount navigation server - 6xRS 232.

Network:

Network Administration: GPRS1, GPRS2 and 3G connection handling. F55 data connection handling

PABX: KX-TDA30FR Panasonic with 8 external lines and 24 extension lines. Door phone intercom. 20 x telephone set. 2 x KX-T7630. Fax machine

Telephone System: GSM (Voice-Fax-Data)

VHF: 2 x Furuno, FM8800 A Class VHF/DSC with interface for remote station.

Transceiver: (FURUNO) MF/HF transceiver unit, control unit and handset, FS 1570

Receiver: (FURUNO) NX-700P NAVTEX Receiver FURUNO NX-700P INM-C. Consists of Felcom-15 built-in GPS and printer.

Cellular Phone System: Primary by Sagem, type GSM Connection to PABX for tel/fax Connection to communication server for GPRS data and internet access to boat's network.

Public Address System: Praesideo Bosch, consists of central unit, network amplifier, controller, waterproof speakers.

Loudhailer: Phoneteck, up to 10 station, 6 x station.

Office: 2 x laptop computers 1 x JP printer photocopier 1 x Sat fax Facsimile

Navigation Systems

Radar: (Primary) SIMRAD, type RA-85, consisting of processor's unit, control unit, transceiver, 19 inch dimmable to black monitor.

Radar: (Secondary) SIMRAD, type RA-84, consisting of processor's unit, control unit, transceiver, 19 inch dimmable to black monitor.

Gyrocompass: SIMRAD, type GC-80, consisting of master compass, sensitive element, control unit, 4 x NMEA output, 1 x stepper output.

Automatic Pilot:	SIMRAD, type AP-50M, consisting of control unit, junction unit, rudder feedback, rate fluxgate compass for backup use.
Steering Lever: (Port and starboard wing station)	SIMRAD FU-50. SIMRAD R135MKII. SIMRAD IS-15 multi purpose display, displays depth, speed, wind, temp, GPS anchor and swallow alarm info. FURUNO VHF/DSC repeater.
Multi Data Repeater:	SIMRAD IS-15. Located in the crew mess and captain's cabin. Depth, speed, wind, temp and GPS.
GPS: (primary and secondary)	Furuno, type GP-160
Navigation Instruments:	TRANSAS, type NaviSailor 3000ECS-i consisting of rack mount navigation server, flush mount trackboard, ARPA module, AIS module, Navtex module, See Trac interface, 19 inch dimmable to black monitor.
Data Interface:	NM-422 NMEA
AIS:	ACR X-Pack DS
Navigation Lights	Norse lights
Echo Sounder: (Primary)	FURUNO FE-700
Echo Sounder: (Secondary)	FURUNO FCV-620
Speed Log:	FURUNO, type DS-80
Weather Station:	FURUNO, type PB-100, consisting of wind speed & direction indication, barometric pressure, air temperature.

Entertainment Systems

Satellite TV: SEATEL, Model C20E satellite TV system

Master Cabin: S.101 AV surround system, subwoofer, built-in CD/DVD/MPE player, digital receiver, navigation screen playback, i-pod ready, infrared controller

VIP Cabin: S.101 AV surround system, subwoofer, built-in CD/DVD/MP3 player, digital receiver, navigation screen playback, i-pod ready, infrared controller

Guest Cabins: 3 x S.101 AV surround system, subwoofer, built-in CD/DVD/MP3 player, digital receiver, navigation screen playback, i-pod ready, infrared controller

Main Salon and Aft Deck: AVR-3806, channel receiver, surround system, DVD-1730, digital receiver, infrared controller, LCD 42 inch TV

Upper and Aft Deck: AVR-3806, DVD-1730, digital receiver, infrared controller, LCD 42 inch TV

Crew Mess: S.101 AV surround system, subwoofer, built-in CD/DVD/MP3 player, i-pod ready, infrared controller.

Crew Cabins: 5 x Pioneer Radio/CD

Galley and Laundry Equipment

Main Galley Equipment

Cooking Equipment: (Main Galley) 2 x Miele ovens 4 x Miele grills 1 x Miele autonomous cooker 1 x Miele cooker with 2 hot plates 3 x Basin 1 x Wesco Navy griddle plate 3 x Miele microwave
Ample storage space Floor draining system Extractors with fire and smoke dampers throughout galley

Refrigeration & Freezer: 4 x Liebherr refrigerators

Icemaker: 1

Laundry Equipment

Washers: 2 x Miele Professional washing machine

Dryers: 2 x Miele Professional dryer

Other: 1 x Miele ironing steam press

Deck Equipment

Capstans: Steen, 9kW each - port and starboard

Anchor

Windlass System: 2 x Steen anchor windlasses, 12kW each

Anchors: 2 x Posidonia anchors, 585 kg

Anchor Chain: Chains 6 shackles (540ft/164 metres) of 24mm stud linked anchor chain both port and starboard.

Boat Crane and Davits: 1 x approved Mor Saverio crane of 1 ton capacity, situated on the foredeck 1 x Mor Saverio travel lift situated at the garage

Passerelle: 1 x Mor Saverio mediterranean style passerelle, length 7.5m, rotational 15 degrees L/45 degrees R

Boarding Ladder: Lowering accommodation ladder situated on the starboard side, rotational 90 degrees L.

Swimming Platform: Teak covered swim platform with 2 x electronically operated swim ladders

Showers and Barbecue

Security, Fire Fighting and Safety Equipment

Security

Equipment

CCTV System: Samsung, consisting of built-in motion detection day/night vandal proof color camera, controller, controller, 2 x 15 inch LCD screen, 2 x SCC-3100A controller.

Cameras: 7 x CCTV cameras covering the main deck aft, the engine room and the port side forward

Door Alarms: Smoke and heat alarms in galley and engine room. Smoke alarms throughout the vessel

Fire Fighting Equipment: CO2 flood fixed fire fighting system in engine room and galley by MINIMAX. Hi Fog Fire fighting 9 zones system covering all the yacht by Ultra Fog. Full complement of SOLAS approved fire fighting equipment.

Safety Equipment: Life rafts Life buoys Life jackets Searchlights Medical Equipment

Tenders & Toys

• 1 x NE 50 JET (5.10m) with Yamaha diesel inboard engine • 1 x SOLAS rescue boat with Yamaha diesel outboard engine • 1 x 6.15m SeaRay 195 tender Other: • 2 Wave Runners • Scuba diving equipment • Snorkeling equipment • Water ski equipment • Fishing equipment

Other Equipment

• Jacuzzi dip pool, custom made at Sun Deck, 2.1m diameter • Ship's safes located in Captain's, Owner's, VIP and Twin cabins

Note

"Not for sale to U.S. Residents while in U.S. waters."

Exclusions

Owner's personal belongings. Owner's personal toys, including but not limited Jet-skis, Tenders, Sea Bobs, Fishing & Diving equipment.

Disclaimer

The Company offers the details of this vessel or yacht in good faith but cannot guarantee or warrant the accuracy of this information nor warrant the condition of the vessel. A buyer should instruct his representatives, agents, or his surveyors, to investigate such details as the buyer desires validated. This vessel or yacht is offered subject to prior sale, price change, or withdrawal without notice.

PHOTOS

Large aft deck



Aft deck dining



Salon looking aft



Salon



Salon



Dining looking aft to salon



Dining



Galley



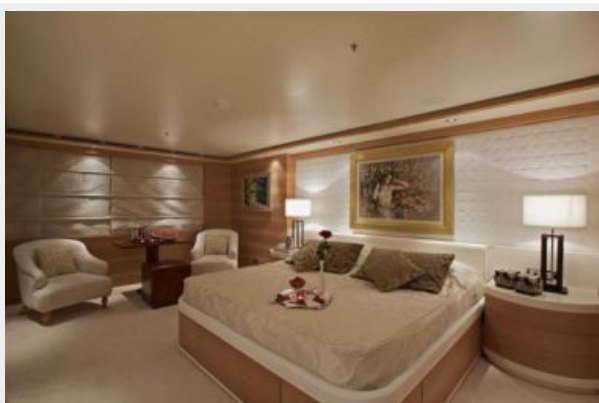
Master with his and hers baths



Master



VIP stateroom



Double guest



Twin guest



Twin guest



Skylounge



Skylounge - TV



Sundeck



Sundeck looking aft



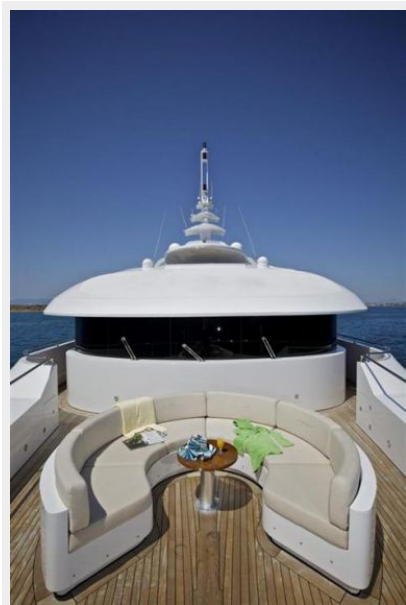
Sundeck looking fwd



Jacuzzi at night



Foredeck lounge



Swim platform



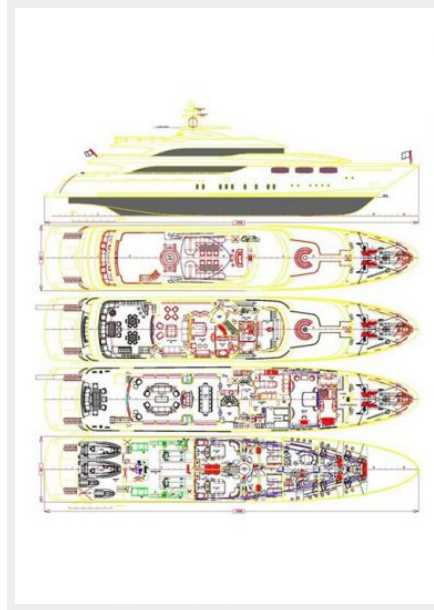
Aerial shot



O'NEIRO at night



GA



CONTACTS

Andrey Shestakov, leading yacht broker of the sales department of Atlantic Yacht and Ship Inc. Atlantic Yacht and Ship Inc., the official representative of the Miami/Fort Lauderdale FL headquarters.

Contact details

Email: info@atlanticyachtandship.ru

Web: www.atlanticyachtandship.ru/en/

Telephones

USA: +1 954 274-4435

RUS: +7 495 766-6268

Office hours

Monday – Saturday: **9:00 - 21:00** EDT

Sunday: **closed**

Address



Harbour Towne Marina, 850 NE 3rd St,
STE 213, Dania, FL 33004