



## HELIODORE — DUFOUR



**Судостроитель:** DUFOUR

**Год постройки:** 2000

**Модель:** Крейсерская яхта

**Цена:** ~~\$99,000 USD~~ Продано

**Местонахождение:** United States

**Длина общая:** 50' 0" (15.24m)

**Ширина:** 15' 0" (4.57m)

**Макс. осадка:** 6' 10" (2.08m)

Купить Heliodore — DUFOUR а также выбрать подходящую вам яхту из нашего каталога яхт вам поможет опытный яхтенный брокер Андрей Шестаков. На сегодняшний день компания Atlantic Yacht and Ship Inc. имеет большое количество яхт в собственном списке продаж, а также тесно сотрудничает со всеми крупными яхтенными производителями по всему миру.

Для того чтобы купить яхту Heliodore — DUFOUR а также проконсультироваться по любому вопросу связанному с покупкой, продажей, чартером яхт позвоните по телефону **8 800 234-4456** (бесплатно по РФ).

# ОГЛАВЛЕНИЕ

---

ОГЛАВЛЕНИЕ	2
ХАРАКТЕРИСТИКИ	3
Обзор	3
Основная информация	13
Размеры	13
Скорость, вместимость и масса	13
Размещение	13
Корпус и палуба	13
Информация о двигателе	14
ФОТОГРАФИИ	15
КОНТАКТЫ	18
Контактная информация	18
Телефоны	18
Время работы	18
Адрес	18

---

# ХАРАКТЕРИСТИКИ

---

## Обзор

---

The Dufour 50 Classic will impress lovers of large traditional yachts. Her majestic silhouette, fine underbody and immense deck area, beamy cockpit, and large steering wheel gives her the looks of a big ocean racer. The Classic 50 design from the board of Berret Racoupeau proudly crowns the Classic range. Inside, accommodations are designed for easy circulation throughout the boat and to preserve intimacy for the passengers. Two large double cabins aft and three cabins forward are separated by a passageway, and all rooms are accessed by individual cabin doors. Three head compartments and an independent shower provide appreciable comfort with a large crew. The Classic 50 - with her oversized fuel and water tanks, improved handling, and unequaled control - predestine the Dufour 50 Classic for long passages.

Many recent improvements including new standing rigging and sails.

Seller will consider taking an automobile with value up to \$20k or a 36'-40' vessel with value up to \$50k in trade!

Lets make a

deal! **Boat Name** Heliodore **Engines** Engine 1: Engine Brand: Volvo Engine Model: TMD 22 Engine Type: Inboard Engine/Fuel Type: Diesel Drive Type: Direct Drive Engine(s) Total Power: 78 HP



## Full Specifications

### Description

- MAKE/MODEL: Dufour 50 Classic
- DESIGNER: Berret/Racoupeau
- BUILDER: Dufour
- WHERE BUILT: France
- YEAR BUILT: 2000
- FLAG: Canada
- LOA M 15.22/FT 50.00
- LWL M 12.67/FT 41.58
- BEAM M 4.6 /FT 15.08
- DRAFT M 2.11 / FT 6.92
- DISPLACEMENT: 14,000 kg/30,870 lbs
- KEEL BALLAST: 4,000 kg/9,260 lbs

### Construction

- HULL: Glass Reinforced Plastic (GRP)
- DECK MATERIAL: Textured G.R.P. with teak in cockpit and on swim platform
- STEERING SYSTEM: Wheel
- RUDDER TYPE: Spade
- KEEL TYPE: Fin

### Engine

- NO OF ENGINES: 1
- MAKE/AGE: Volvo Penta
- ENGINE HOURS: 5000
- MODEL: TMD 22
- HP: 78 hp, **turbo replaced 2012 w/300 hrs.**
- FUEL: Diesel
- NO. OF CYLINDERS: 4
- TYPE OF GEAR BOX(S): **Volvo Penta new 2012 w/300hrs**
- TYPE OF CONTROLS: Morse
- DRIVE TO PROP: Direct shaft drive
- TYPE OF PROP: Three blade fixed prop

## Electrics

- VOLTAGE: 12 volt
- NO OF BATTERIES: 5 (4 house & 1 engine)
- METHOD OF CHARGING: Alternator
- ALTERNATOR: 14v/60A
- 2000W sine wave inverter

## Tankage

- NO OF FUEL TANKS: 1
- MATERIAL: Alloy
- CAPACITY OF FUEL TANKS:
  - GALLONS: 132
- NO OF WATER TANKS: 2
- MATERIAL: Alloy
- CAPACITY OF WATER TANKS:
  - GALLONS: 184
- HOLDING TANKS: Yes
- **all tanks inspected and serviced 2012**

## Water System

- H&C pressurized fresh water
- WATER HEATING SYSTEM: engine exchanger

## Rig

- TYPE: Sloop Rig
- SPAR MAKER: Sparcraft
- SPAR MATERIAL: Aluminum
- STANDING RIGGING MATERIAL: Stainless steel wire
- **LAST REPLACED: 2012**
- RUNNING RIGGING MATERIAL: Cored braided line
- MAINSAIL REEFING: Slab reefing
- HEADSAIL ROLLER FURLING: Facnor

## Sails

- **TYPE: Mainsail**
- **MAKER: Doyle**
- **YEAR: 2012**
- **TYPE: Genoa**
- **MAKER: Doyle**
- **YEAR: 2012**
- TYPE: Lazy bag
- MAKER: Doyle
- YEAR: 2005

## Winches

- GENOA WINCHES: (2)
- MAKE: Lewmar 58's
- SPEED: 2
- SELF TAILING: Yes
- SHEET WINCHES: (1)
- MAKE: Lewmar 48
- SPEED: 2
- SELF TAILING: Yes
- HALYARD WINCHES: (1)
- MAKE: Lewmar 48
- SPEED: 2
- SELF TAILING: Yes

## Accomodations

- NO OF BERTHS: 12
- DOUBLES: 4
- SINGLES: 4
- NO. OF CABINS: 5
- AFT CABIN: 2
- COOKER TYPE: Eno
- NO OF BURNERS: 2
- OVEN: Yes
- FUEL: Propane
- FRIDGE: Frigoboat engine driven cold plate
- SINK: (1) Double basin in galley
- NO. HEADS: (3)
- MAKE: Jabsco Parr
- HANDBASIN: (3)
- SHOWER: (3) plus transom shower
- UPHOLSTERY/COLOUR SCHEME: Tan cloth with blue pattern
- INTERIOR CONSTRUCTION/WOOD TYPE: Teak laminated marine ply
- WHICH LAYOUT VERSION: 5 cabin

## Ground Tackle

- PRIMARY ANCHOR: Delta
- SECONDARY ANCHOR: Brittany
- WINDLASS: Electric
- MAKE: Lofrans Tigres 1200W /12v

## Ekectronics

- COMPASS: Plastimo
- **Simrad NX 40 Chartplotter**
- ECHOSOUNDER: Autohelm Tridata
- SPEED: Autohelm Tridata
- LOG: Autohelm Tridata
- WIND: Windex
- **VHF:Raymarine RAY 55 with emergency locator**
- GPS: Garmin GPS 126
- AUTO PILOT: Raytheon Autohelm ST 7000+



## General Equipment

- FIRE FIGHTING EQUIPMENT: Portable
- BILGE PUMPS: Manual & automatic
- SAFETY EQUIPMENT:
- NAVIGATION LIGHTS:
- GUARDWIRES/PULPIT/PUSHPIT:
- SWIMMING LADDER
- **BIMINI new 21012**
- WARPS: (4)
- FENDERS: (4)
- BOATHOOK:



## **Seller's improvements 2102/2013**

**Heliodore** was hauled out and the bottom painted and zincs changed in January 2013. It is in very good shape with no signs of osmosis. Thru hull fittings and spade rudder are in excellent shape.

### Engine

The Volvo TMD 22 engine has been well maintained and serviced and has approximately 5000 hours.

A new Turbo has 300 hours.

A new transmission has approximately 300 hours.

All engine mounts were replaced and engine was realigned 200 hours ago.

A new alternator was installed 100 hours ago

Stainless shaft has a dripless stuffing box and has 300 hours on it.

Electric bilge pump is new.

Electric 2500 g/p/h emergency bilge pump is new

### Improvements 2012 / 2013

From its previous listing and purchase survey that I include in attachment there are many important improvements which follow:

#### Standing rigging 2013

In January 2013 the mast was unstepped and all components were unfastened and inspected down to the interior chain plates while the vessel was in dry dock.

With a contracted top a US rigging company

- The standing rigging has been completely replaced for new oversized LEWMAR wire and hardware including turnbuckles etc.
- A twin backstay to the mast head was added for improved strength.
- New internal wiring in mast.
- A full rigging report is available.

#### Sails

The Doyle Main and Genoa sails have 6 month of use since new. The old main and Genoa are

available as spares...

- A new Bimini Top has been added to the cockpit

Electronics:

- Raymarine autopilot works very well

- SIMRAD NX40 Chart plotter with Caribbean and East Coast North America charts

- Depth Sounder, speed log

- Raymarine RAY55 with emergency EPIRB locator VHF radio with new mast head antenna and spare antenna on pushpit.

Navigation Lights etc

- New LED anchor light at mast head

- All LED running lights and deck lights have been changed or serviced

Electrical

- A new 2 KW 110 volt sine wave inverter has been added to the electrical system

- A new 2 kw/h gasoline 110 volt generator for emergency use.

Dinghy

- 2 year old 10 foot Walkerbay hypalon rubber inflatable with a hard bottom inflatable in good shape.

- 6 hp four stroke Mercury outboard with 50 hours on it.

Spares:

-New spare starter motor for Volvo TMD 22 diesel engine.

-New spare 80 amps Alternator

-shore power electrical system

- Anchor electric winch spare

- Many new electrical, mechanical spare parts are included

Tools / Maintenance etc

- A full complement of hand and electrical tools are included . Including: socket

sets/wrenches/drivers and drills/angle grinders/sanders/ and many more.

- All engine and fuel systems and transmission maintenance are to date.
- Plumbing and electrical maintenance done
- All fuel and water tanks have been serviced

## Основная информация

---

**Тип судна:** Крейсерская яхта

**Модельный год:** 2000

**Год постройки:** 2000

**Страна:** United States

**Кубрик:** Да

## Размеры

---

**Длина общая:** 50' 0" (15.24m)

**Длина по ватерлинии:** 41' 7" (12.67m)

**Ширина:** 15' 0" (4.57m)

**Макс. осадка:** 6' 10" (2.08m)

## Скорость, вместимость и масса

---

**Водоизмещение:** 30870 Pounds

**Вместимость воды:** 184 Gallons

**Объем топливного бака:** 132 Gallons

## Размещение

---

**Всего кают:** 3

## Корпус и палуба

---

**Материал корпуса:** Fiberglass

## Информация о двигателе

---

**Двигатели:** 1

**Производитель:** Volvo Penta

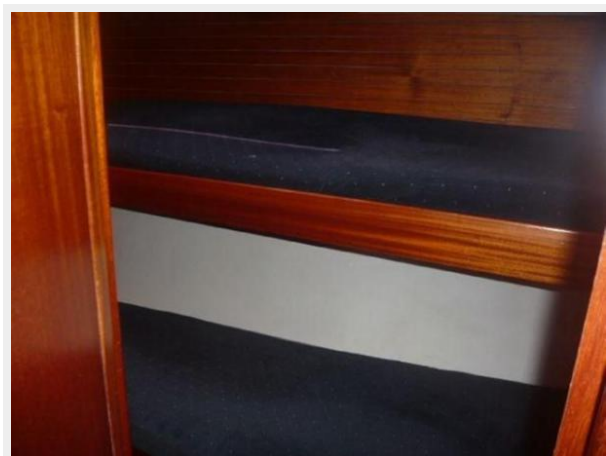
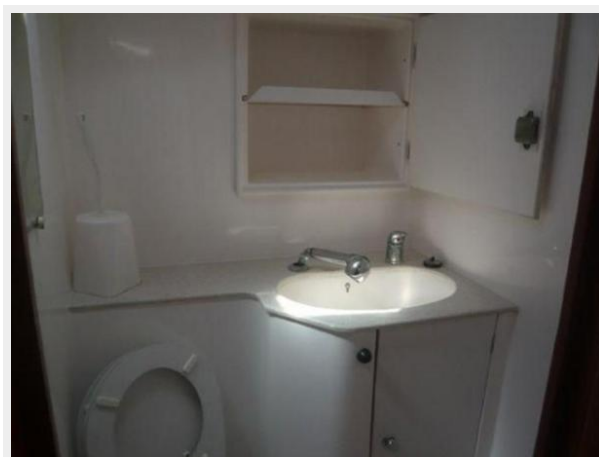
**Модель:** TMD 22

**Тип двигателя:** Inboard

**Тип топлива:** Diesel

# ФОТОГРАФИИ









# КОНТАКТЫ

---

Андрей Шестаков (Andrey Shestakov) – ведущий яхтенный брокер отдела продаж яхт и судов компании Atlantic Yacht and Ship Inc. Официальный представитель Atlantic Yacht and Ship Inc. для русскоговорящих клиентов в центральном офисе компании в Майами/Форт Лодердейл/Флорида/США.

## Контактная информация

---

Email: [info@atlanticyachtandship.ru](mailto:info@atlanticyachtandship.ru)

Web: [www.atlanticyachtandship.ru](http://www.atlanticyachtandship.ru)

## Телефоны

---

Бесплатный звонок по России: **8 800 234-4456**

Москва и Московская область: **+7 495 766-6268**

Краснодарский край: **+7 918 465-6644**

США, Майами, Флорида: **+1 954 274-4435**

## Время работы

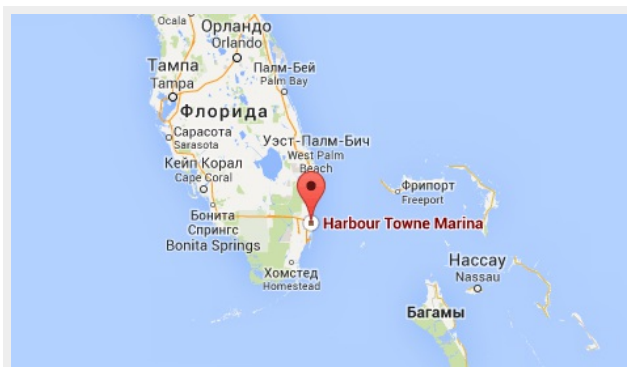
---

Понедельник – Суббота: **9:00 - 21:00 EDT**

Воскресенье: **Закрыто**

## Адрес

---



Harbour Towne Marina, 850 NE 3rd St,  
STE 213, Dania, FL 33004