



## SAILBAD THE SINNER — LE COMTE



**Builder:** LE COMTE

**Year Built:** 1968

**Model:** Cruiser

**Price:** ~~\$29,750 USD~~ Off the market

**Location:** United States

**LOA:** 38' 0" (11.58m)

**Beam:** 10' 11" (3.33m)

**Min Draft:** 5' 4" (1.63m)

**Max Draft:** 5' 4" (1.63m)

Our experienced yacht broker, Andrey Shestakov, will help you choose and buy a yacht that best suits your needs **Sailbad the Sinner — LE COMTE** from our catalogue. Presently, at **Atlantic Yacht and Ship Inc.**, we have a wide variety of yachts available on our sale's list. We also work in close contact with all the big **yacht manufacturers** from all over the world.

If you would like to buy a yacht **Sailbad the Sinner — LE COMTE** or would like help answering any questions concerning purchasing, selling or chartering a yacht, please call **+1 954 274-4435**

# TABLE OF CONTENTS

TABLE OF CONTENTS	2
SPECIFICATIONS	4
Overview	4
Basic Information	4
Dimensions	4
Speed, Capacities and Weight	4
Accommodations	4
Hull and Deck Information	5
Engine Information	5
DETAILED INFORMATION	6
38' Le Comte Northeast Overview	6
38' Le Comte Northeast Vessel Walkthrough	6
38' Le Comte Northeast Accommodations	6
38' Le Comte Northeast Salon	6
38' Le Comte Northeast Galley	6
38' Le Comte Northeast Dining	6
38' Le Comte Northeast Stateroom	7
38' Le Comte Northeast Electronics	7
38' Le Comte Northeast Engine/Mechanical Equipment	7
38' Le Comte Deck Equipment	7
38' Le Comte Northeast Sails & Rigging	8
38' Le Comte Northeast Tender	8
38' Le Comte Northeast Exclusions	8
38' Le Comte Northeast Disclaimer	8
PHOTOS	9
38' Le Comte Northeast aft profile	9
38' Le Comte Northeast foredeck	9

---

38' Le Comte Northeast foredeck aft	9
38' Le Comte Northeast cockpit forward	9
38' Le Comte Northeast cockpit aft	9
38' Le Comte Northeast salon forward	9
38' Le Comte Northeast salon aft	10
38' Le Comte Northeast salon seating	10
38' Le Comte Northeast salon settee	10
38' Le Comte Northeast galley	10
38' Le Comte Northeast refrigeration	10
38' Le Comte Northeast stateroom	10
38' Le Comte Northeast stateroom port	11
38' Le Comte Northeast stateroom starboard	11
38' Le Comte Northeast head	11
38' Le Comte Northeast auxilliary	11
CONTACTS	12
Contact details	12
Telephones	12
Office hours	12
Address	12

---

# SPECIFICATIONS

---

## Overview

---

Sailbad the Sinner is a classic Le Comte Northeast 38 with a 3 year old Awlgrip Flag Blue paint job on the hull. Her seller is busy with other projects now, so Sailbad the Sinner is now available for sale.

## Basic Information

---

**Year Built:** 1968

**Category:** Cruiser

**Sub Category:** Classic

**Model Year:** 1968

**Year Built:** 1968

**Country:** United States

**Fly Bridge:** No

**Cockpit:** No

**Helipad:** No

## Dimensions

---

**LOA:** 38' 0" (11.58m)

**LWL:** 26' 8" (8.13m)

**Beam:** 10' 11" (3.33m)

**Min Draft:** 5' 4" (1.63m)

**Max Draft:** 5' 4" (1.63m)

## Speed, Capacities and Weight

---

**Displacement:** 16000 Pounds

**Water Capacity:** 110 Gallons

**Fuel Capacity:** 40 Gallons

## Accommodations

---

---

**Total Cabins:** 1

**Total Berths:** 3

**Total Heads:** 1

**Captain Cabin:** False

## Hull and Deck Information

---

**Hull Material:** Fiberglass

## Engine Information

---

**Engines:** 1

**Manufacturer:** Perkins

**Model:** Prima

**Fuel Type:** Diesel

---

## DETAILED INFORMATION

---

---

### 38' Le Comte Northeast Overview

---

Sailbad the Sinner is a classic Le Comte Northeast 38 with a 3 year old Awlgrip Flag Blue paint job on the hull. Her seller is busy with other projects now, so Sailbad the Sinner is now available for sale.

---

### 38' Le Comte Northeast Vessel Walkthrough

---

Entering the salon, you will find the galley port aft, settee port forward, icebox starboard aft, built-in sofa to starboard and a fireplace starboard forward. The head is then to port and the stateroom is forward.

---

### 38' Le Comte Northeast Accommodations

---

Sailbad the Sinner offers a stateroom forward with a v-berth with insert. The head is to port, between the salon and stateroom.

---

### 38' Le Comte Northeast Salon

---

The salon offers a settee with folding table port forward, galley port aft, icebox starboard aft, a built-in benchseat to starboard and a fireplace starboard forward. There is an overhead hatch and side windows and portlights for plenty of natural light and ventilation.

---

### 38' Le Comte Northeast Galley

---

The galley is located port aft in the salon.

- 3-burner gas cooktop and oven
- Built-in icebox starboard aft

---

### 38' Le Comte Northeast Dining

---

Dining space is available at the salon settee.

---

## 38' Le Comte Northeast Stateroom

---

The stateroom is forward and offers a v-berth with insert, shelves, storage drawers and cabinet, hanging locker, reading lights and an overhead hatch. The head is to port between the salon and the stateroom.

---

## 38' Le Comte Northeast Electronics

---

- Navman Tracker 5110 chart plotter
- Standard Horizon depth sounder
- Navico PowerPilot autopilot
- Ritchie magnetic compass
- Uniden VHF

---

## 38' Le Comte Northeast Engine/Mechanical Equipment

---

- Perkins Prima 30hp auxilliary
- Morse engine control

---

## 38' Le Comte Deck Equipment

---

- 2 X Danforth anchors
- 50' 3/8" anchor chain and 250' 5/8" nylon rode
- Dodger
- New cockpit canvas in 2010
- Non-skid decks
- Stainless steel deck hardware
- Stainless steel stanchions and lifelines
- Hull painted Awlgrip Flag Blue in 2010

---

## 38' Le Comte Northeast Sails & Rigging

---

- 2 X Bariant 28 winches forward and 2 X Bariant 22 winches aft
- Hydraulic backstay

---

## 38' Le Comte Northeast Tender

---

- Walker Bay 9'5" RIB
- Suzuki 2.5hp 4-stroke outboard

---

## 38' Le Comte Northeast Exclusions

---

Sellers' personal belongings

---

## 38' Le Comte Northeast Disclaimer

---

The Company offers the details of this vessel in good faith but cannot guarantee or warrant the accuracy of this information nor warrant the condition of the vessel. A buyer should instruct his agents, or his surveyors, to investigate such details as the buyer desires validated. This vessel is offered subject to prior sale, price change, or withdrawal without notice.



# PHOTOS

**38' Le Comte Northeast aft profile**



**38' Le Comte Northeast foredeck**



**38' Le Comte Northeast foredeck aft**



**38' Le Comte Northeast cockpit forward**



**38' Le Comte Northeast cockpit aft**



**38' Le Comte Northeast salon forward**



**38' Le Comte Northeast salon aft**



**38' Le Comte Northeast salon seating**



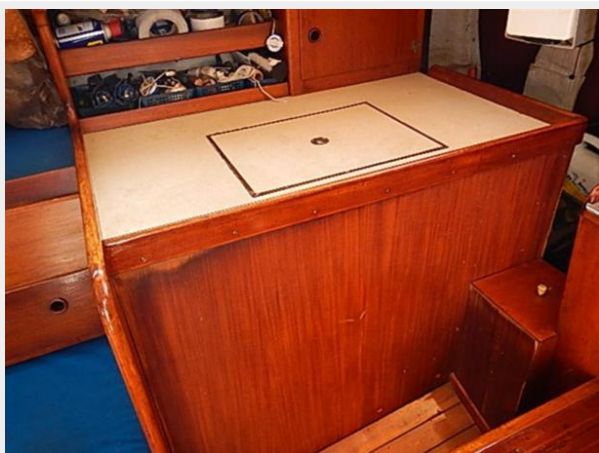
**38' Le Comte Northeast salon settee**



**38' Le Comte Northeast galley**



**38' Le Comte Northeast refrigeration**



**38' Le Comte Northeast stateroom**



**38' Le Comte Northeast stateroom port**



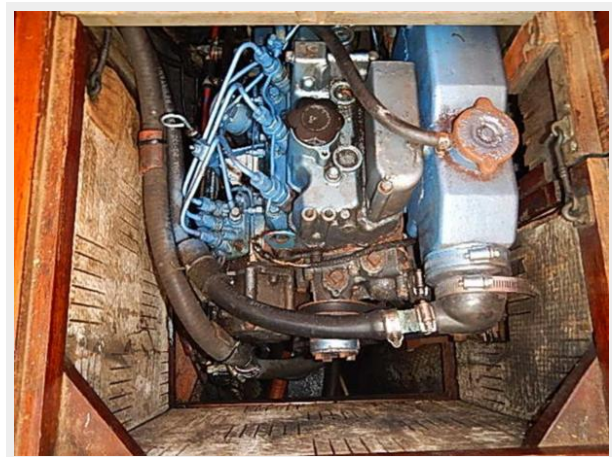
**38' Le Comte Northeast stateroom starboard**



**38' Le Comte Northeast head**



**38' Le Comte Northeast auxilliary**



# CONTACTS

---

Andrey Shestakov, leading yacht broker of the sales department of Atlantic Yacht and Ship Inc. Atlantic Yacht and Ship Inc., the official representative of the Miami/Fort Lauderdale FL headquarters.

## Contact details

---

Email: [info@atlanticyachtandship.ru](mailto:info@atlanticyachtandship.ru)

Web: [www.atlanticyachtandship.ru/en/](http://www.atlanticyachtandship.ru/en/)

## Telephones

---

USA: +1 954 274-4435

RUS: +7 495 766-6268

## Office hours

---

Monday – Saturday: **9:00 - 21:00** EDT

Sunday: **closed**

## Address

---



Harbour Towne Marina, 850 NE 3rd St,  
STE 213, Dania, FL 33004