



LADY CLAUDIA — VOSPER



Builder: VOSPER

Year Built: 1963

Model: Motor Yacht

Price: PRICE ON APPLICATION

Location: United States

LOA: 97' 0" (29.57m)

Beam: 21' 6" (6.55m)

Min Draft: 6' 0" (1.83m)

Max Draft: 6' 6" (1.98m)

Our experienced yacht broker, Andrey Shestakov, will help you choose and buy a yacht that best suits your needs **LADY CLAUDIA — VOSPER** from our catalogue. Presently, at Atlantic Yacht and Ship Inc., we have a wide variety of yachts available on our sale's list. We also work in close contact with all the big yacht manufacturers from all over the world.

If you would like to buy a yacht **LADY CLAUDIA — VOSPER** or would like help answering any questions concerning purchasing, selling or chartering a yacht, please call +1 954 274-4435

TABLE OF CONTENTS

TABLE OF CONTENTS	2
SPECIFICATIONS	3
Overview	3
Basic Information	4
Dimensions	4
Accommodations	4
Hull and Deck Information	4
Engine Information	5
PHOTOS	6
CONTACTS	13
Contact details	13
Telephones	13
Office hours	13
Address	13

SPECIFICATIONS

Overview

This is one Classic Lady.

A very large saloon that opens to a large covered deck area, with table and chairs for 8 guest. The entry to the staterooms is through the portside saloon area circle staircase.

Then as you go below, three large guest state rooms, and a beautiful Master, all queen size beds, well appointed décor All updated private ensuites, lavish use of Granite on all counters.

Boat Name LADY CLAUDIA **Specs** Builder: Vosper Thornetcraft U.K. Designer: Phillip Rhodes Flag of Registry: United States **Dimensions** LOA: 105 ft 0 in Beam: 21 ft 6 in LWL: 95 ft 0 in Length on Deck: 105 ft 0 in Minimum Draft: 6 ft 0 in Maximum Draft: 6 ft 6 in Headroom: 7 ft 0 in Deadrise: 14 ° at Transom Freeboard: 9 ft 0 in **Engines** Engine 1: Engine Brand: Caterpillar Engine Model: 3306 40 hrs SMOH Engine Type: Inboard Engine/Fuel Type: Diesel Engine Hours: 40 Propeller: 3 blade propeller Drive Type: Direct Drive Engine(s) Total Power: 285 HP Engine 2: Engine Brand: Caterpillar Engine Model: 3306 40hrs SMOH Engine Type: Inboard Engine/Fuel Type: Diesel Engine Hours: 40 Propeller: 3 blade propeller Drive Type: Direct Drive Engine(s) Total Power: 285 HP **Tanks** Fresh Water Tanks: 2 Stainless steel (500 Gallons) Fuel Tanks: (5000 Gallons) Holding Tanks: 1 Aluminum (100 Gallons) **Accommodations** Number of double berths: 4 Number of cabins: 4 Number of heads: 3 Seating Capacity: 50 **Electronics** Log-speedometer Navigation center Radar Depthsounder GPS Plotter Autopilot Compass VHF **Inside Equipment** Washing machine Air compressor Microwave oven Deep freezer Air conditioning Hot water Refrigerator Marine head Dishwasher Fresh water maker Electric bilge pump Bow thruster Battery charger **Electrical Equipment** Shore power inlet Generator Electrical Circuit: 12V **Outside Equipment/Extras** Hydraulic windlass

Accommodations

The main salon has an open airy feeling with three large windows on the port and three on the starboard. Looking aft through a double door is a large entertainment section which is an extension of the salon and has a table with seating for eight under the hardtop extension. Going forward, the starboard passage leads to the galley which is all finished in solid wood cabinets and granite countertops with a very rich traditional look. On the starboard stair forward three steps up to the pilothouse is the main helm station with all the navigation equipment and electric controls. The pilothouse has a large bench designed seating that looks forward and to the starboard are six stairs that lead to an opening to the top deck, navigation station and seating area for at least twenty people. Port and starboard openings from the pilothouse forward lead to the exclusive formal dining area that seats ten comfortably. Throughout the vessel there is very tastefully done granite countertops which beautifully accents the decor. The access to the master and guest staterooms are through the salon port side leading down to the passage aft to the master stateroom which is quite large and very well appointed and includes its own master bath and shower. Leading from the stair below to the immediate port side is a guest stateroom

with its own head and shower. Also, there are two other guest staterooms with adjoining showers and heads that are very well appointed. All three guest staterooms boast queen sized beds with decorator spreads. Throughout the vessel all headliners, wall coverings and flooring are new and in very good taste.

Basic Information

Category: Motor Yacht

Model Year: 1963

Year Built: 1963

Country: United States

Fly Bridge: Yes

Dimensions

LOA: 97' 0" (29.57m)

LWL: 95' 0" (28.96m)

Beam: 21' 6" (6.55m)

Min Draft: 6' 0" (1.83m)

Max Draft: 6' 6" (1.98m)

Accommodations

Total Cabins: 4

Hull and Deck Information

Hull Material: Fiberglass

Engine Information

Engines: 2

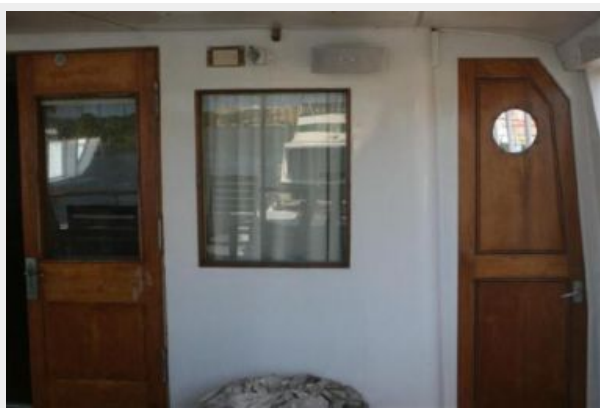
Manufacturer: Caterpillar

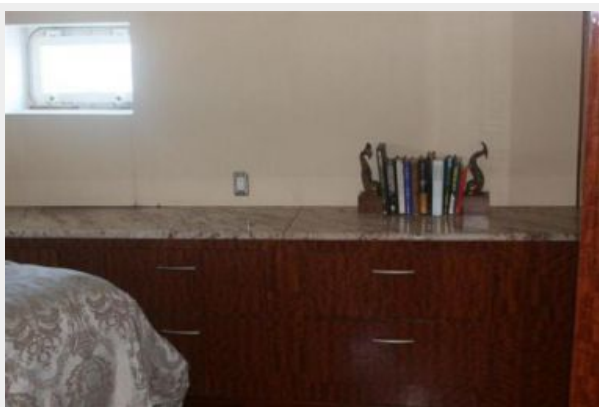
Model: 3306 40 hrs SMOH

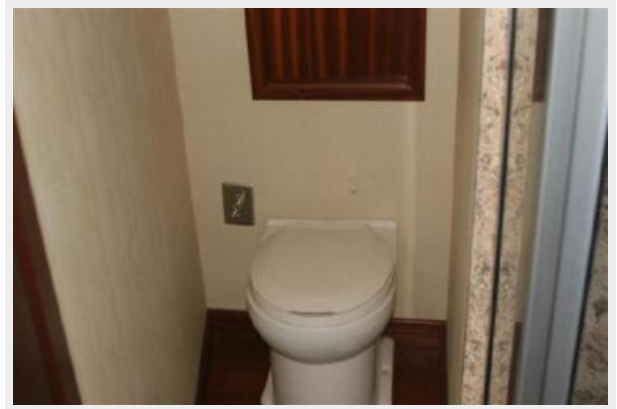
Engine Type: Inboard

Fuel Type: Diesel

PHOTOS















CONTACTS

Andrey Shestakov, leading yacht broker of the sales department of Atlantic Yacht and Ship Inc. Atlantic Yacht and Ship Inc., the official representative of the Miami/Fort Lauderdale FL headquarters.

Contact details

Email: info@atlanticyachtandship.ru

Web: www.atlanticyachtandship.ru/en/

Telephones

USA: +1 954 274-4435

RUS: +7 495 766-6268

Office hours

Monday – Saturday: **9:00 - 21:00** EDT

Sunday: **closed**

Address



Harbour Towne Marina, 850 NE 3rd St,
STE 213, Dania, FL 33004