



LADY CLAUDIA — VOSPER



Судостроитель: VOSPER

Год постройки: 1963

Модель: Моторная яхта

Цена: **ЦЕНА ЯХТЫ ПО ЗАПРОСУ**

Местонахождение: United States

Длина общая: 97' 0" (29.57m)

Ширина: 21' 6" (6.55m)

Мин. осадка: 6' 0" (1.83m)

Макс. осадка: 6' 6" (1.98m)

Купить **LADY CLAUDIA — VOSPER** а также выбрать подходящую вам яхту из нашего каталога яхт вам поможет опытный яхтенный брокер Андрей Шестаков. На сегодняшний день компания Atlantic Yacht and Ship Inc. имеет большое количество яхт в собственном списке продаж, а также тесно сотрудничает со всеми крупными яхтенными производителями по всему миру.

Для того чтобы купить яхту **LADY CLAUDIA — VOSPER** а также проконсультироваться по любому вопросу связанному с покупкой, продажей, чартером яхт позвоните по телефону **8 800 234-4456** (бесплатно по РФ).

ОГЛАВЛЕНИЕ

ОГЛАВЛЕНИЕ	2
ХАРАКТЕРИСТИКИ	3
Обзор	3
Основная информация	4
Размеры	4
Размещение	4
Корпус и палуба	4
Информация о двигателе	5
ФОТОГРАФИИ	6
КОНТАКТЫ	13
Контактная информация	13
Телефоны	13
Время работы	13
Адрес	13

ХАРАКТЕРИСТИКИ

Обзор

This is one Classic Lady.

A very large saloon that opens to a large covered deck area, with table and chairs for 8 guest. The entry to the staterooms is through the portside saloon area circle staircase.

Then as you go below, three large guest state rooms, and a beautiful Master, all queen size beds, well appointed décor All updated private ensuites, lavish use of Granite on all counters.

Boat Name LADY CLAUDIA **Specs** Builder: Vosper Thornetcraft U.K. Designer: Phillip Rhodes Flag of Registry: United States **Dimensions** LOA: 105 ft 0 in Beam: 21 ft 6 in LWL: 95 ft 0 in Length on Deck: 105 ft 0 in Minimum Draft: 6 ft 0 in Maximum Draft: 6 ft 6 in Headroom: 7 ft 0 in Deadrise: 14 ° at Transom Freeboard: 9 ft 0 in **Engines** Engine 1: Engine Brand: Caterpillar Engine Model: 3306 40 hrs SMOH Engine Type: Inboard Engine/Fuel Type: Diesel Engine Hours: 40 Propeller: 3 blade propeller Drive Type: Direct Drive Engine(s) Total Power: 285 HP Engine 2: Engine Brand: Caterpillar Engine Model: 3306 40hrs SMOH Engine Type: Inboard Engine/Fuel Type: Diesel Engine Hours: 40 Propeller: 3 blade propeller Drive Type: Direct Drive Engine(s) Total Power: 285 HP **Tanks** Fresh Water Tanks: 2 Stainless steel (500 Gallons) Fuel Tanks: (5000 Gallons) Holding Tanks: 1 Aluminum (100 Gallons) **Accommodations** Number of double berths: 4 Number of cabins: 4 Number of heads: 3 Seating Capacity: 50 **Electronics** Log-speedometer Navigation center Radar Depthsonder GPS Plotter Autopilot Compass VHF **Inside Equipment** Washing machine Air compressor Microwave oven Deep freezer Air conditioning Hot water Refrigerator Marine head Dishwasher Fresh water maker Electric bilge pump Bow thruster Battery charger **Electrical Equipment** Shore power inlet Generator Electrical Circuit: 12V **Outside Equipment/Extras** Hydraulic windlass

Accommodations

The main salon has an open airy feeling with three large windows on the port and three on the starboard. Looking aft through a double door is a large entertainment section which is an extension of the salon and has a table with seating for eight under the hardtop extension. Going forward, the starboard passage leads to the galley which is all finished in solid wood cabinets and granite countertops with a very rich traditional look. On the starboard stair forward three steps up to the pilothouse is the main helm station with all the navigation equipment and electric controls. The pilothouse has a large bench designed seating that looks forward and to the starboard are six stairs that lead to an opening to the top deck, navigation station and seating area for at least twenty people. Port and starboard openings from the pilothouse forward lead to the exclusive formal dining area that seats ten comfortably. Throughout the vessel there is very tastefully done granite countertops which beautifully accents the decor. The access to the master and guest staterooms are through the salon port side leading down to the passage aft to the master stateroom which is quite large and very well appointed and includes its own master bath and shower. Leading from the stair below to the immediate port side is a guest stateroom

with its own head and shower. Also, there are two other guest staterooms with adjoining showers and heads that are very well appointed. All three guest staterooms boast queen sized beds with decorator spreads. Throughout the vessel all headliners, wall coverings and flooring are new and in very good taste.

Основная информация

Тип судна: Моторная яхта

Модельный год: 1963

Год постройки: 1963

Страна: United States

Открытая палуба мостика: Да

Размеры

Длина общая: 97' 0" (29.57m)

Длина по ватерлинии: 95' 0" (28.96m)

Ширина: 21' 6" (6.55m)

Мин. осадка: 6' 0" (1.83m)

Макс. осадка: 6' 6" (1.98m)

Размещение

Всего кают: 4

Корпус и палуба

Материал корпуса: Fiberglass

Информация о двигателе

Двигатели: 2

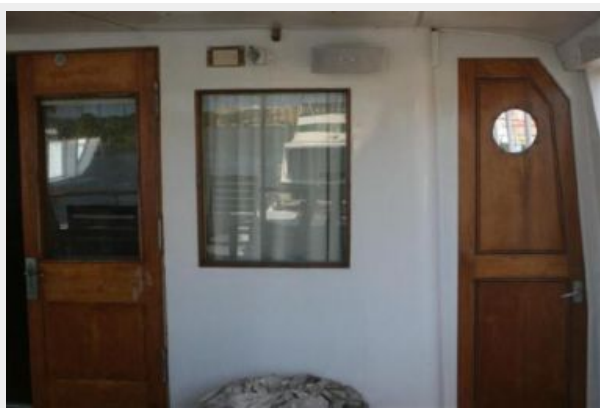
Производитель: Caterpillar

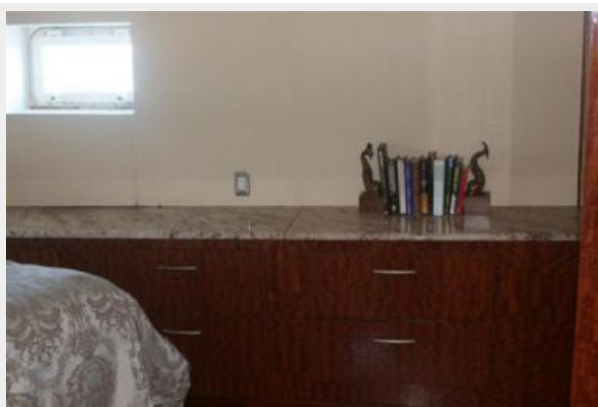
Модель: 3306 40 hrs SMOH

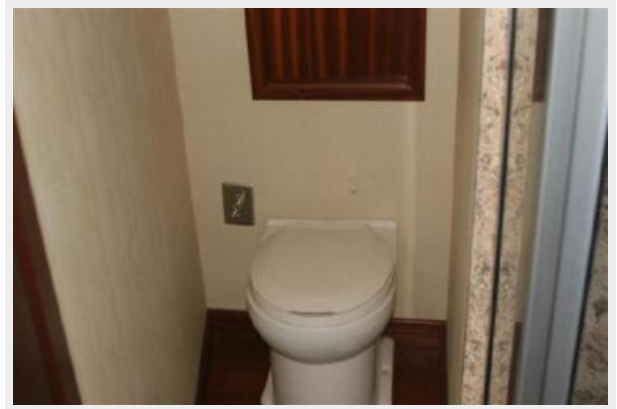
Тип двигателя: Inboard

Тип топлива: Diesel

ФОТОГРАФИИ















КОНТАКТЫ

Андрей Шестаков (Andrey Shestakov) – ведущий яхтенный брокер отдела продаж яхт и судов компании Atlantic Yacht and Ship Inc. Официальный представитель Atlantic Yacht and Ship Inc. для русскоговорящих клиентов в центральном офисе компании в Майами/Форт Лодердейл/Флорида/США.

Контактная информация

Email: info@atlanticyachtandship.ru

Web: www.atlanticyachtandship.ru

Телефоны

Бесплатный звонок по России: **8 800 234-4456**

Москва и Московская область: **+7 495 766-6268**

Краснодарский край: **+7 918 465-6644**

США, Майами, Флорида: **+1 954 274-4435**

Время работы

Понедельник – Суббота: **9:00 - 21:00**
EDT

Воскресенье: **Закрито**

Адрес



Harbour Towne Marina, 850 NE 3rd St,
STE 213, Dania, FL 33004