



76 WALKAROUND — LAZZARA



Судостроитель: LAZZARA

Год постройки: 1994

Модель: Моторная яхта

Цена: ~~\$799,000 USD~~ Продано

Местонахождение: United States

Длина общая: 76' 11" (23.44m)

Ширина: 19' 1" (5.82m)

Макс. осадка: 4' 6" (1.37m)

Крейс. скорость: 21 Kts. (24 MPH)

Макс. скорость: 23 Kts. (26 MPH)

Купить 76 Walkaround — LAZZARA а также выбрать подходящую вам яхту из нашего каталога яхт вам поможет опытный яхтенный брокер Андрей Шестаков. На сегодняшний день компания Atlantic Yacht and Ship Inc. имеет большое количество яхт в собственном списке продаж, а также тесно сотрудничает со всеми крупными яхтенными производителями по всему миру.

Для того чтобы купить яхту 76 Walkaround — LAZZARA а также проконсультироваться по любому вопросу связанному с покупкой, продажей, чартером яхт позвоните по телефону **8 800 234-4456** (бесплатно по РФ).

ОГЛАВЛЕНИЕ

ОГЛАВЛЕНИЕ	2
ХАРАКТЕРИСТИКИ	5
Обзор	5
Основная информация	5
Размеры	5
Скорость, вместимость и масса	5
Размещение	6
Корпус и палуба	6
Информация о двигателе	6
ПОДРОБНОЕ ОПИСАНИЕ	7
Accommodations	7
Galley	7
Staterooms	7
Pilothouse	8
Fly Bridge	8
Main Deck	8
Engine Room/Mechanical Equipment	8
Electrical System	9
Remarks	9
Disclaimer	9
Исключения	9
Отказ от ответственности	10
ФОТОГРАФИИ	11
Salon Looking Aft	11
Salon Looking Forward	11
Dining Area	11
Dinette	11

Midship Stairs	12
Galley	12
Master Settee	12
Master Stateroom	12
Master Head	13
Master Vanity	13
Master Washer & Dryer	13
Guest Stateroom	13
Crew/Guest Stateroom Fwd	14
Office	14
Crew Washer & Dryer	14
Lower Helm	14
Access to Bridge	15
Bridge Looking Aft	15
Bridge Looking Fwd	15
Bridge BBQ Grill & Fridge	15
Bridge Bar	16
Day Head	16
Lifeboat	16
Walkaround	16
Stabilizer Control	17
Engine Room Fwd	17
Gen Sets	17
Workbench	17
Logo	18
Watermaker	18
Profile (sistership)	18
КОНТАКТЫ	19
Контактная информация	19

Телефоны	19
Время работы	19
Адрес	19

ХАРАКТЕРИСТИКИ

Обзор

This 76 Lazzara Walkaround Motoryacht has been meticulously maintained. Her five stateroom layout, including two forward staterooms that can be used for crew or guests, offers all the space and comfort you would expect. Also in this area you will find an office/day study. The luxurious master stateroom is aft featuring a walk around king bed and luxury ensuite head. The two mirror image VIP staterooms are forward as well, each with ensuite heads and stall showers.

She has just completed an interior up fit by Lazzara. Electronics have been upgraded. Her two MTU 1000 engines provide excellent performance. Don't miss the opportunity to see this vessel if you are looking for a motoryacht in this range.

Основная информация

Тип судна: Моторная яхта	Подкатегория: Flybridge
Модельный год: 1994	Год постройки: 1994
Страна: United States	Верх: 2363
Открытая палуба мостика: Да	Кубрик: Да

Размеры

Длина общая: 76' 11" (23.44m)	Ширина: 19' 1" (5.82m)
Макс. осадка: 4' 6" (1.37m)	

Скорость, вместимость и масса

Крейс. скорость: 21 Kts. (24 MPH)	Макс. скорость: 23 Kts. (26 MPH)
Водоизмещение: 94000 Pounds	Вместимость воды: 350 Gallons
Вместимость сточного бака: 100 Gallons	Объем топливного бака: 1750 Gallons

Размещение

Всего кают: 5

Всего ком. состава: 3

Корпус и палуба

Материал корпуса: Fiberglass

Дизайнер корпуса: Dick Lazzara

Информация о двигателе

Двигатели: 2

Производитель: MTU

Модель: 12V183

Тип двигателя: Inboard

Тип топлива: Diesel

ПОДРОБНОЕ ОПИСАНИЕ

Accommodations

On the main level aft is the spacious teak deck and integrated access ladder to the Flybridge, access to the side decks and entrance to the luxurious Main Salon and Dining area. The Main Salon features two leather upholstered built in sofas, complemented by lacquered built in furniture. To starboard is the entertainment center with Sat TV, a dry bar and the circular stairway to the amidships staterooms.

The separate dining area is on the port side with cabinetry for china and stemware and a large glass top table with generous seating space. The Day Head is located starboard forward of the circular staircase and is complete with pedestal sink, mirror, Kohler fittings and a full size toilet.

Galley

On the main deck, forward to port is the Galley featuring corian countertops, lacquered cabinets and a double bin sink with Grohe spray head. A light white washed oak vinyl floor with accents brighten up the area. Dishwasher, Insta-hot, microwave/convection oven, trash compactor, range top with exhaust fan, double door refrigerator/freezer with icemaker are included. The galley is completed with a pantry, TV and recessed lighting. There are two washer/dryer stacked units, one in the forward area next to the office, the second in the foyer amidships between the Master and Guest Staterooms.

Staterooms

The Master is aft and has a walk around king bed with storage below. You will find nightstands and armoires to both port and starboard. There is a settee to port, a desk to starboard, a complete entertainment center, padded headboard, reading lights and a walk in closet with an electronic safe. The Master Head contains a vanity with two custom molded sinks with brass inlays, Jacuzzi tub and double heads in the shower. There are two medicine cabinets, linen closet, ceramic tile floor and head.

Guest accommodations are two mirror image staterooms with ensuite heads and stall showers, each with queen bed and storage beneath, night stands, linen lockers, a complete entertainment center and air/heat controls.

The forward VIP and Guest/Crew Staterooms are accessed from a stairway in the Galley. The forward stateroom has a hanging locker, complete entertainment center and lacquered furniture with storage. It has a double bed, ensuite head with stall shower and full size toilet. There is a

hatch to the foredeck in this area. The starboard stateroom has upper and lower berths, complete entertainment center, ensuite head with a stall shower as well as lacquered cabinet for storage.

The Office/Study has an upholstered settee in the same area features a roomy desk with burl trim and TV as well as communication lines.

Pilothouse

This area has a helm seat to port and a breakfast nook dinette to starboard. Full instrumentation has been upgraded and includes all monitoring systems, alarms, electronic engine controls, bow thruster, stabilizer controls and panels as well as the full complement of upgraded electronics.

Fly Bridge

There is a vinyl upholstered sun pad above the tender garage to port, vinyl upholstered U-shaped seating forward with a large fiberglass table. There is a Miele stainless BBQ grill in the built in cabinet on the port side that also houses an undercounter refrigerator, sink and icemaker. Three helm seats are forward with the full compliment of upgraded navigation equipment as well as full engine controls, gauges and stabilizer and bow thruster controls. Port and starboard aft are two concealed integrated davits. There is a quick connect remote control for engine controls (forward aft throttles) and bow thruster. Located mid bridge to port this remote has a 25' cord. The tender is a 15' Avon with a Honda four stroke 50hp outboard engine. There is also an 8-10 person life raft with cradle.

Main Deck

There are two hydraulically operated pods at the transom (port and starboard). The starboard pod is for a wave runner or similar craft (not included) and the port is for diving equipment (not included). The foredeck offers a large sun pad with approximately 100 cu ft of storage beneath, four large storage lockers and a high polished stainless steel anchor with 200' of chain.

Engine Room/Mechanical Equipment

- Engine Hours 859 / 10 Since Major Overhaul
- Reverse Cycle A/C & Micro Processor Controls
- Automatic & Manual Fire Control System
- Generator & Engine Sea Water Strainers
- Trim Tabs
- 40 Gallon Water Heater

- (4) Bilge Pumps
- Underwater Exhaust System with Bypass
- Electric Bow Thruster
- Oil Transfer System for Engines & Generators
- Gyro Gale Quadrafin Stabilizers
- 1200 gpd Watermaker
- Central Vacuum System
- Workbench
- Fuel Prime Pump on Engine and Generators

Electrical System

- Coded Wiring System
- Telephone and Cable Outlets both Port & Starboard
- Hardtop Bullwark Lights
- Smart "Y" 100A/240 Shore Power Port and Starboard
- Electrical Bonding System
- 100 feet Dockside Electric Cable and Cablemaster
- (2) 20KW Onan Generators
- Isolation, Buck and Boost Transformer.

Remarks

This is an opportunity to own a Lazzara Motoryacht that has been upgraded and meticulously maintained at a very reasonable price. This vessel offers outstanding luxury, great performance and the prestige of owning a vessel to be proud of. Don't miss the opportunity to view this vessel.

Disclaimer

The Company offers the details of this vessel in good faith but cannot guarantee or warrant the accuracy of this information nor warrant the condition of the vessel. A buyer should instruct his agents, or his surveyors, to investigate such details as the buyer desires validated. This vessel is offered subject to prior sale, price change, or withdrawal without notice.

Исключения

При продаже яхты исключаются личные вещи владельца, личное оборудование, включая список предметов личного пользования владельца яхты, но не ограничиваясь

гидроциклами, катерами, сибоб, снаряжением для рыбалки и дайвинга если таковые имеются на момент заключения сделки.

Отказ от ответственности

Компания предоставляет описание судна или яхты добросовестно, но не может гарантировать точность этой информации, а также не ручается за техническое состояние. Покупатель должен проинструктировать своих агентов или оценщиков исследовать представленную информацию более подробно, по собственному желанию. Продажа судна или яхты, изменение цены или снятие с продажи будет происходить без предварительного уведомления.

ФОТОГРАФИИ

Salon Looking Aft



Salon Looking Forward



Dining Area



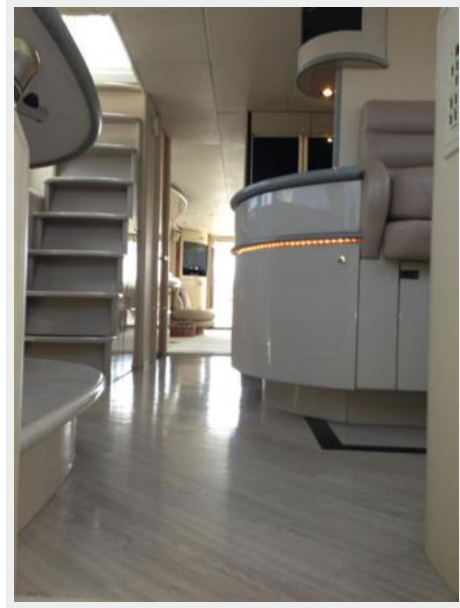
Dinette



Galley



Midship Stairs



Master Stateroom



Master Settee



Master Vanity



Master Head



Master Washer & Dryer



Guest Stateroom



Crew/Guest Stateroom Fwd



Office



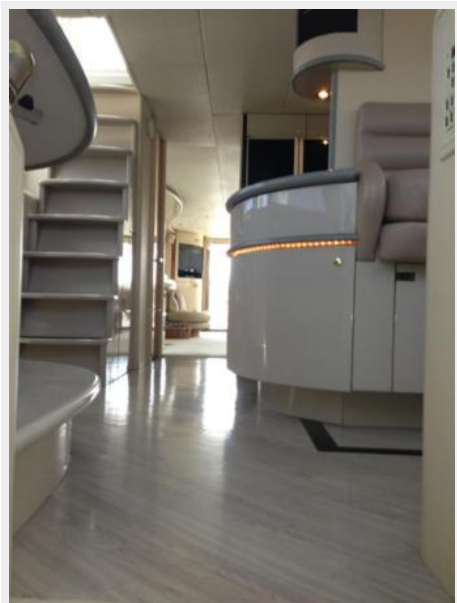
Crew Washer & Dryer



Lower Helm



Access to Bridge



Bridge Looking Aft



Bridge Looking Fwd



Bridge BBQ Grill & Fridge



Bridge Bar



Day Head



Lifeboat



Walkaround



Stabilizer Control



Engine Room Fwd



Gen Sets



Workbench



Watermaker



Logo



Profile (sistership)



КОНТАКТЫ

Андрей Шестаков (Andrey Shestakov) – ведущий яхтенный брокер отдела продаж яхт и судов компании Atlantic Yacht and Ship Inc. Официальный представитель Atlantic Yacht and Ship Inc. для русскоговорящих клиентов в центральном офисе компании в Майами/Форт Лодердейл/Флорида/США.

Контактная информация

Email: info@atlanticyachtandship.ru

Web: www.atlanticyachtandship.ru

Телефоны

Бесплатный звонок по России: **8 800 234-4456**

Москва и Московская область: **+7 495 766-6268**

Краснодарский край: **+7 918 465-6644**

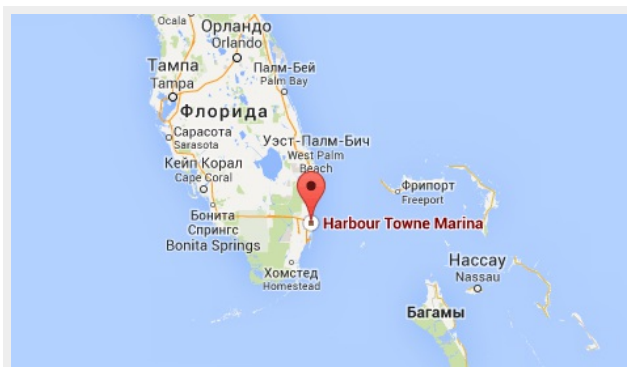
США, Майами, Флорида: **+1 954 274-4435**

Время работы

Понедельник – Суббота: **9:00 - 21:00 EDT**

Воскресенье: **Закрыто**

Адрес



Harbour Towne Marina, 850 NE 3rd St,
STE 213, Dania, FL 33004