



## ENCORE — GULFSTAR



**Builder:** GULFSTAR

**LOA:** 41' 0" (12.50m)

**Year Built:** 1973

**Model:** Cruising Sailboat

**Price:** ~~\$44,800 USD~~ Off the market

**Location:** United States

Our experienced yacht broker, Andrey Shestakov, will help you choose and buy a yacht that best suits your needs **ENCORE — GULFSTAR** from our catalogue. Presently, at Atlantic Yacht and Ship Inc., we have a wide variety of yachts available on our sale's list. We also work in close contact with all the big yacht manufacturers from all over the world.

If you would like to buy a yacht **ENCORE — GULFSTAR** or would like help answering any questions concerning purchasing, selling or chartering a yacht, please call **+1 954 274-4435**

---

# TABLE OF CONTENTS

---

TABLE OF CONTENTS	2
SPECIFICATIONS	3
Overview	3
Basic Information	13
Dimensions	14
Speed, Capacities and Weight	14
Accommodations	14
Hull and Deck Information	14
Engine Information	14
PHOTOS	15
CONTACTS	19
Contact details	19
Telephones	19
Office hours	19
Address	19

---

# SPECIFICATIONS

---

## Overview

---

**Encore has been extensively updated for extended cruising as follows:**

2009 - New standing rigging and chain plates.

2010 - New Adler Babour refrigeration.

2011 - New running rigging, new bimini & dodger, new water maker, new solar panels with controller, new house batteries, and electronics including AIS.

Additionally in 2011 Encore's Perkins engine and transmission were both rebuilt, with only 239 hours.

**NO Teak Decks! Boat Name Encore Specs Builder: Gulfstar Yachts (USA) Designer: Vince Lazzarra Flag of Registry: United States Keel: Fin Hull Shape: Monohull Dimensions LOA: 41 ft 0 in Maximum Draft: 5 ft 8 in Displacement: 22000 lbs Bridge Clearance: 50 ft 0 in Headroom: 6 ft 8 in Engines Engine 1: Engine Brand: Perkins Engine Model: 4-108 Engine Type: Inboard Engine/Fuel Type: Diesel Engine Hours: 239 Propeller: 3 blade propeller Drive Type: Direct Drive Engine Power: 50 HP Tanks Fresh Water Tanks: 1 (50 Gallons) Fuel Tanks: 1 (50 Gallons) Holding Tanks: 1 Plastic (21 Gallons) Accommodations Number of single berths: 1 Number of twin berths: 2 Number of double berths: 1 Number of cabins: 2 Number of heads: 2 Seating Capacity: 6 Electronics Plotter - Raymarine C120 Radio Navigation center Cockpit speakers Radar - Raymarine 4kw Compass TV set GPS - Raymarine C120 Wind speed and direction Depthsounder DVD player VHF Autopilot - Raymarine ST70 Sails Furling genoa - 135% Battened mainsail Rigging Spinnaker pole Steering wheel Inside Equipment Electric bilge pump Microwave oven Refrigerator Oven Battery charger Air conditioning Fresh water maker Marine head Hot water Manual bilge pump Electrical Equipment Shore power inlet - 30 amp. Inverter Electrical Circuit: 110V Outside Equipment/Extras Solar panel Covers Spray hood Mainsail cover Bimini Top**

---

## Accommodations

Encore has been updated with AC and heat. 6'8" headroom in the main salon and galley. You enter the salon/galley area from the center cockpit. The settee is spacious and can seat up to 7 people comfortably. Plenty of storage is provided under the seating and to the sides of the hull with a book shelf and cupboards above the settee and a large cupboard next to the salon.

The galley is U shaped on port with propane stove, microwave, locker style refrigerator and lots of storage areas.

Moving forward is the head with double doors for privacy. Further forward is a V-berth with stowage underneath and a hanging locker to starboard.

Moving aft from the salon through the passageway on starboard is the captain's state room. The head is located behind the engine compartment. There is plenty of storage below the aft berth and large hanging locker to starboard. The head has a vanity and hot/cold shower.

## Galley

The U-shaped galley is a favorite amongst chef's, due to everything is at your fingertips. There is plenty of counter space, with an additional table that can extend beyond the stainless sink. As with a lot of cruisers you have a choice of water all discharging at the sink, either a manual salt water pump, Hot/cold with Culligan filtered water or the watermaker. The top loading icebox was upgraded with refrigeration. Along with the 3 burner Seaward stainless steel propane stove and oven, a microwave was added to help out with cooking.

- 12 volt fan
- Katadyn Power Survivor 40e watermaker - NEW in 2011
- Microwave oven - NEW in 2011
- Adler Barbour Super cold icebox reffridgerator conversion - Installed 2010
- Hot water - 6 gal. 120vac and engine heat exchanger located in the engine compartment.



---

## Hull, Rigging and Sails

In 2009-12 "Encore", went through an extensive refit in preparation for some comfortable cruising with peace of mind added in for good measure. Gulfstars are renowned for their seaworthiness and make for great cruisers. So to continue in bringing her up to date her owners replaced or added:

- Standing rigging, including Chainplates by SSMR - NEW 2009 ,
- Running rigging - NEW 2011
- Restitched sails - IN 2012 The mainsail is fitted with a Dutchman Sail Flaking system - just release the halyard, straighten up a bit and your done!
- Profurl roller furling Jib - NEW Blocks and line 2012
- Bimini - NEW 2010
- Dodger with Stratoglass - NEW 2010

## Hull

- There were no blisters but for self assurance when the hull was repainted in 2011, a barrier coat was put on first and then 3 coats of bottom paint.

## Deck

- The deck was given a coat of paint in 2011.
- Manual Windlass







## Electronics

- Raymarine C120 12" integrated chartplotter purchased Installed 2011 mounted @ helm with new chart chips for Florida, Caribbean, South America and Bahamas.
- Raymarine 4KW radar –Installed 2011
- Raymarine DSM 30 color fishfinder - NEW 2011
- Raymarine SR50 Sirius weather and radio - NEW 2011
- Raymarine 12vdc below deck autopilot with dedicated tiller arm - NEW 2011
- Raymarine GPS Installed 2011
- AIS – NEW 2011

### ◇ *all integrated in nav display @ helm -*

- Garmin handheld backup GPS with 12v cradle in salon
- Uniden DSC VHF radio in salon with remote speaker for cockpit (new ant. On mizzen mast 2011)
- Cobra VHF handheld
- 

### Entertainment is provided by:

- 24" lcd HDTV on a swivel mount - NEW 2010
- DVD Player - NEW 2010

### • *Note: all the speakers are independently adjustable*

- Alpine AM-FM-CD-MP3 Stereo NEW 2010
- Electrovoice speakers in salon New 2010
- Sony speakers in aft cabin NEW 2010
- Cockpit speakers - Dual



## Electrical & Mechanical

- 3 - 135 watt Kyrocera solar panels with Blue Sky charge controller - NEW 2011
- 4 - 6v Golf batteries for in house bank - New 2011
- 12v engine starting battery with charge combiner and isolator - NEW 2011
- LED 12v Interior Lighting
- 110v fluorescent lighting
- LED nav lights
- 700 watt AC inverter
- 30 AMP Charles battery charger - NEW 2011
- Victron battery monitor for house bank
- 3 - staged bilge pumps with high water alarm
- Propane solenoid shutoff from galley NEW 2010. The propane locked is on the stern in a fiberglass dock box. The propane tank is fiberglass construction.

## Forward head

- Lavac toilet
- Henderson pump -Plumbed for overboard discharge or into holding tank

## Aft Head

- Jabsco Toilet -New 2012 plumbed for overboard discharge

A/C is a 110v King Air with 16,500 BTU rev. cycle heat installed in 2001.

## Engine

**Recent engine work was performed to insure safe passage and operation.**

- **Also, the Borg and Warner transmission was rebuilt in 2011**
- **In 2011 - Perkins 4-108 4cyl. diesel, professionally rebuilt - Accelerated Yacht Services, currently only 239 hours.**
- **Michigan 3 blade propeller - NEW 2011**
- **Exhaust temp alarm - NEW 2011**
- **12v oil change pump - NEW 2011**

**Note that with a little rearranging of the engine compartment there is sufficient space to install a generator.**

## Brokers comments

**Encore has been meticulously brought up to date with today's standards of cruising. Her owners have chosen a quiet means of recharging her batteries for long peaceful stays in scenic coves. With the extensive refit and attention to safety in new navigation equipment, she will provide peace of mind combined with low maintenance to give many years of enjoyment to her future owners.**

Encore's interior shows well and she is air conditioned. She is a dry boat and ready for cruising to your favorite destination. Her current slip is transferable and the marina is live-a-board friendly.

Encore is ready for a Bahamas cruise or a live-a-board in downtown St. Petersburg!

## Basic Information

**Category:** Cruising Sailboat

**Sub Category:** Center Cockpit

**Model Year:** 1973

**Year Built:** 1973

**Country:** United States

**Cockpit:** Yes

---

## Dimensions

---

**LOA:** 41' 0" (12.50m)

---

## Speed, Capacities and Weight

---

**Water Capacity:** 50 Gallons

**Holding Tank:** 21 Gallons

**Fuel Capacity:** 50 Gallons

---

## Accommodations

---

**Total Cabins:** 2

---

## Hull and Deck Information

---

**Hull Material:** Fiberglass

---

## Engine Information

---

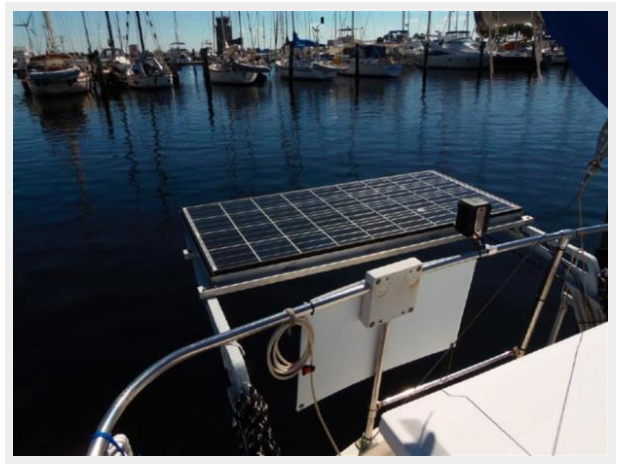
**Engines:** 1

**Manufacturer:** Perkins

**Engine Type:** Inboard

**Fuel Type:** Diesel

# PHOTOS













# CONTACTS

---

Andrey Shestakov, leading yacht broker of the sales department of Atlantic Yacht and Ship Inc. Atlantic Yacht and Ship Inc., the official representative of the Miami/Fort Lauderdale FL headquarters.

## Contact details

---

Email: [info@atlanticyachtandship.ru](mailto:info@atlanticyachtandship.ru)

Web: [www.atlanticyachtandship.ru/en/](http://www.atlanticyachtandship.ru/en/)

## Telephones

---

USA: +1 954 274-4435

RUS: +7 495 766-6268

## Office hours

---

Monday – Saturday: **9:00 - 21:00** EDT

Sunday: **closed**

## Address

---



Harbour Towne Marina, 850 NE 3rd St,  
STE 213, Dania, FL 33004