



DIAMOND — AB



Builder: [AB](#)

Year Built: 2012

Model: Mega Yacht

Price: \$14,000,000 USD

Location: United States

LOA: 116' 0" (35.36m)

Beam: 24' 7" (7.49m)

Max Draft: 3' 9" (1.14m)

Cruise Speed: 40 Kts. (46 MPH)

Max Speed: 49 Kts. (56 MPH)

Our experienced yacht broker, Andrey Shestakov, will help you choose and buy a yacht that best suits your needs **Diamond — AB** from our catalogue. Presently, at Atlantic Yacht and Ship Inc., we have a wide variety of yachts available on our sale's list. We also work in close contact with all the big yacht manufacturers from all over the world.

If you would like to buy a yacht **Diamond — AB** or would like help answering any questions concerning purchasing, selling or chartering a yacht, please call **+1 954 274-4435**

TABLE OF CONTENTS

TABLE OF CONTENTS	2
SPECIFICATIONS	3
Overview	3
Basic Information	3
Dimensions	3
Speed, Capacities and Weight	3
Accommodations	4
Hull and Deck Information	4
Engine Information	4
DETAILED INFORMATION	5
Remarks	5
2015 Yard Period	6
Exclusions	6
Disclaimer	6
PHOTOS	7
CONTACTS	13
Contact details	13
Telephones	13
Office hours	13
Address	13

SPECIFICATIONS

Overview

Using materials and technology originally developed for the aerospace industry, the ground-breaking 36-metre AB 116 is both light and strong. With three MTU 16V2000 M93CR engines, each producing 2400 HP, and three MJP waterjets, the AB 116 reaches top speeds of up to 50 knots offering the almost complete vibration-free experience the Massa-based shipyard is now renowned for. Accommodating up to 12 guests, the AB 116 is completely custom from her interior layout to the exteriors. Large windows create a spacious and airy feel and a pilot house, discreetly separated from the salon, offers 360° visibility of the exterior from any point on the main deck.

Basic Information

Category: Mega Yacht

Model Year: 2013

Year Built: 2012

Country: United States

Vessel Top: Electronic Sunroof

Fly Bridge: Yes

Dimensions

LOA: 116' 0" (35.36m)

Beam: 24' 7" (7.49m)

Max Draft: 3' 9" (1.14m)

MFG Length: 118' 9" (36.20m)

Speed, Capacities and Weight

Cruise Speed: 40 Kts. (46 MPH)

Max Speed: 49 Kts. (56 MPH)

Gross Tonnage: 105 Pounds

Water Capacity: 845.3505664 Gallons

Fuel Capacity: 4887.182962 Gallons

Accommodations

Total Cabins: 5

Total Berths: 8

Sleeps: 12

Total Heads: 6

Crew Cabin: 3

Crew Sleeps: 6

Crew Heads: 2

Hull and Deck Information

Hull Material: Kevlar Composite

Deck Material: Teak

Hull Configuration: Deep Vee

Engine Information

Engines: 3

Manufacturer: MTU

Model: 16V 2000 M 93

Engine Type: Inboard

Fuel Type: Diesel

DETAILED INFORMATION

Remarks

Diamond was built by AB Yachts in Viareggio, Italy. It was delivered to an American client on the last day of December in 2012.

AB Yachts was created in 1992 with the goal of setting the standard in the world of pleasure yachting. Since then it has taken distinctive steps in the boat building world.

For the first time we have seen jet drives applied to high performance craft with small dimensions. Specifically researched structural resins have been introduced, collaborating with the most innovative firms in the field of composite materials. Finite element design programs have been applied to optimise the sizes of existing structures.

These are just a few of innovation introduced by AB Yachts, which is now a consolidated enterprise with ample spaces for building and completing yachts.

AB Yachts is a future-oriented shipyard.

Accommodations

Diamond has a four stateroom layout with a GYM that offers pullman berths for availability of a fifth guest stateroom. The master suite is midships and full beam. The king berth, large seating area and enormous bathroom will please even the most demanding. There is a queen berth in one of the guest suites, twins in another and bunks in the kids room. Every stateroom has a private, oversized, bathroom.

Forward of the stateroom space is an atrium that offers a great seating area for private conversations, watching football or simply relaxing.

Forward off the Atrium is the crew area and galley. There are three crew staterooms with heads and showers. The crew has their own dining/lounging area.

On the main deck is the open, airy salon and pilothouse, The pilothouse is equiped with every modern electronic device necessary to take Diamond to amazing adventures. On first inspection you will note the simplicity in the joystick controls for the MJP jets.

The dining salon is just aft of the pilot station. It seats ten. The roof over the dining salon opens offering great views and fresh air.

The salon is aft of the Dining salon divided by a low hutch. Immediately you will observe the large windows on this entire main deck offering great views from any location.

The aft deck is spacious and offers entertainment space and seating as well as a large lounging area.

The transom opens to supply storage for a tender, jetskiis, dive equipment or nearly any water sports gear.

On the main deck forward of the pilothouse and accessed by the wide walk around deck is a comfortable seating area for ten with an umbrella for sun protection. There is a tender garage on the bow for a second tender or more jetskiis.

The flybridge offers sunning, seating and dining options. There is also a pilot station on the flybridge.

Diamond will reach speeds of 48 knots and will cruise at 40 knots.

2015 Yard Period

MTU 750 hour service Generator service Complete metal flake paint job Jet service RINA class inspection Exhaust system upgrades including new insulation blankets New aft deck commercial ice maker New LED light controllers All electronics serviced and upgraded as needed All fuel tanks re-coated Bottom paint New fuel transfer pump New A/C pump Tender serviced Jetski serviced New exterior upholstery

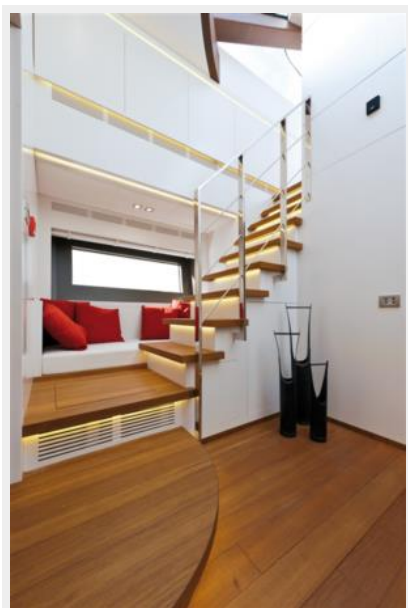
Exclusions

Owner's personal belongings. Owner's personal toys, including but not limited Jet-skis, Tenders, Sea Bobs, Fishing & Diving equipment.

Disclaimer

The Company offers the details of this vessel or yacht in good faith but cannot guarantee or warrant the accuracy of this information nor warrant the condition of the vessel. A buyer should instruct his representatives, agents, or his surveyors, to investigate such details as the buyer desires validated. This vessel or yacht is offered subject to prior sale, price change, or withdrawal without notice.

PHOTOS

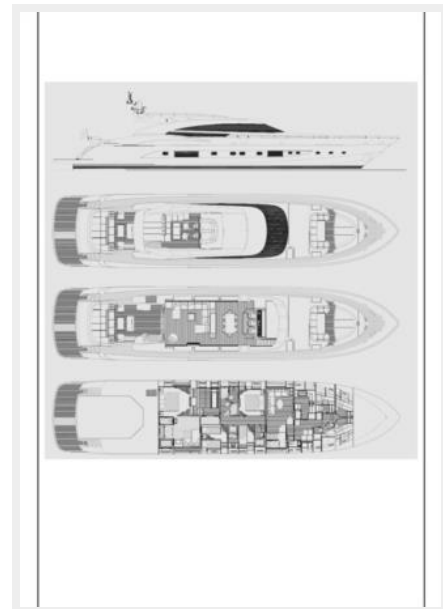
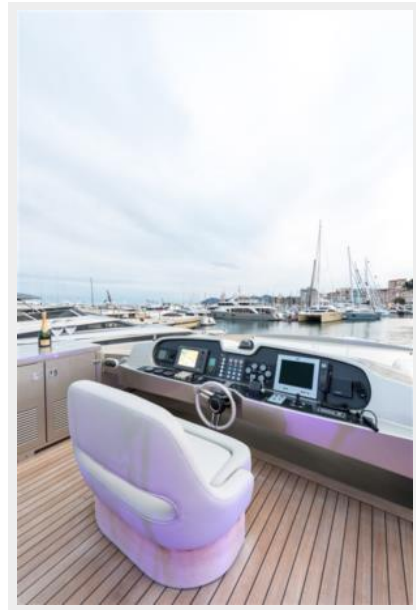












CONTACTS

Andrey Shestakov, leading yacht broker of the sales department of Atlantic Yacht and Ship Inc. Atlantic Yacht and Ship Inc., the official representative of the Miami/Fort Lauderdale FL headquarters.

Contact details

Email: info@atlanticyachtandship.ru

Web: www.atlanticyachtandship.ru/en/

Telephones

USA: +1 954 274-4435

RUS: +7 495 766-6268

Office hours

Monday – Saturday: **9:00 - 21:00** EDT

Sunday: **closed**

Address



Harbour Towne Marina, 850 NE 3rd St,
STE 213, Dania, FL 33004