



LOFTBARGE 65 — ZHUHAI SHIPBUILDING INDUSTRY LTD



Builder: [Zhuhai Shipbuilding Industry Ltd](#)

LOA: 65' 0" (19.80m)

Year Built: 2010

Beam: 19' 9" (6.00m)

Model: Houseboat

Max Draft: 5' 2" (1.57m)

Price: ~~\$1,089,743 USD~~ Off the market

Location: China

Our experienced yacht broker, Andrey Shestakov, will help you choose and buy a yacht that best suits your needs **Loftbarge 65 — Zhuhai Shipbuilding Industry Ltd** from our catalogue. Presently, at **Atlantic Yacht and Ship Inc.**, we have a wide variety of yachts available on our sale's list. We also work in close contact with all the big yacht manufacturers from all over the world.

If you would like to buy a yacht **Loftbarge 65 — Zhuhai Shipbuilding Industry Ltd** or would like help answering any questions concerning purchasing, selling or chartering a yacht, please call **+1 954 274-4435**

TABLE OF CONTENTS

TABLE OF CONTENTS	2
SPECIFICATIONS	3
Basic Information	3
Dimensions	3
Accommodations	3
Hull and Deck Information	3
Engine Information	3
DETAILED INFORMATION	5
Yacht Introduction & Description	5
Accommodations	5
Liveaboard Area Descriptions	5
Galley	5
Deck Area	6
Exclusions	6
Disclaimer	6
PHOTOS	7
CONTACTS	12
Contact details	12
Telephones	12
Office hours	12
Address	12

SPECIFICATIONS

Basic Information

Category: Houseboat

Model Year: 2010

Year Built: 2010

Country: China

Dimensions

LOA: 65' 0" (19.80m)

Beam: 19' 9" (6.00m)

Max Draft: 5' 2" (1.57m)

Accommodations

Total Cabins: 4

Total Berths: 4

Sleeps: 7

Total Heads: 3

Crew Cabin: 1

Crew Berths: 1

Crew Sleeps: 1

Hull and Deck Information

Hull Material: Steel

Hull Color: Dark Blue & White

Engine Information

Engines: 1

Manufacturer: Shanghai

Model: D683

Engine Type: Inboard

Fuel Type: Diesel

DETAILED INFORMATION

Yacht Introduction & Description

Built by The Loftbarge Co. Ltd, a Hong Kong based boat building company, with the shipyard in Zhuhai China, this Loftbarge 65 is a unique aqua liveaboard concept. 'Linking the sea with the sky' the liveaboard features a stylish skylight concept with high ceilings, a high volume interior and contemporary living on all levels. Enter the LB65 and you will be surprised by the uniqueness found between a loft apartment and a classic motor barge. Designed as a self propelled pleasure vessel (Hong Kong Marine Department Cat IV) with maximum livable space, she has about 2,500 - 3,000 sq ft of interior and around 600ft of exterior/deck space Built robustly in marine grade steel to commercial (CCS) standards, the welded steel hull and superstructure using 6 and 5mm steel, the build is tough, long lasting and low maintenance. Berthed in Gold Coast Yacht and Country Club Marina, this liveaboard is offered with debenture and membership subject to marina management approval. Based close by to shops, restaurants and local amenities such as schools and public transport links, this liveaboard is ideal for families looking for spacious on-water living that is hard to come by in the smaller apartments found in Hong Kong.

Accommodations

Double master bedroom with ensuite bathroom - double sink, bath and shower. Large floor to ceiling storage wardrobes. Two guest bedrooms with shared large ensuite bathroom with double sink and shower. The guest bedrooms can be converted to accommodate single or double beds or one room could be a study room. Separate helper's room connected to the galley (or could be a dedicated storage room) Day head bathroom with shower.

Liveaboard Area Descriptions

Salon: Large open plan living room with dining area connects with open plan kitchen for entertaining and dining Office: Separate dedicated office/study area with fitted desk Second salon space: Stairs lead up to second level spacious family style games room for entertaining next to the open plan roof deck. Glass sliding doors open fully to allow the whole top deck to open up in cooler weather. In the summer, the doors can close to keep the area cooled by air con. Other features: All rooms have fitted aircon - reverse cycle hot and cold Hot water system feeds all bathrooms and kitchen Ceiling fans in mater bedroom and living room

Galley

Large open plan galley with a floor to ceiling cupboard for storage, fitted spacious worktop and cupboards. Double sink Schott Cerran ceramic hob with two burners Siemen electric convection oven Samsung double fridge/freezer Siemens dishwasher Whirlpool washer and drier units - sold subject to sale price

Deck Area

Large open deck areas on two levels. One balcony leads from the family room on one side, on the other side is a large deck area suitable for al fresco dining, BBQ's and entertaining. Next to the Master double room is a separate walk around leading to a balcony On the highest level is an open deck area leading to the steering helm.

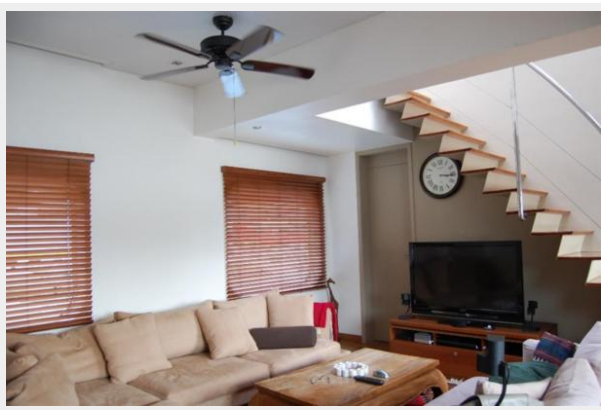
Exclusions

Owner's personal belongings. Owner's personal toys, including but not limited Jet-skis, Tenders, Sea Bobs, Fishing & Diving equipment.

Disclaimer

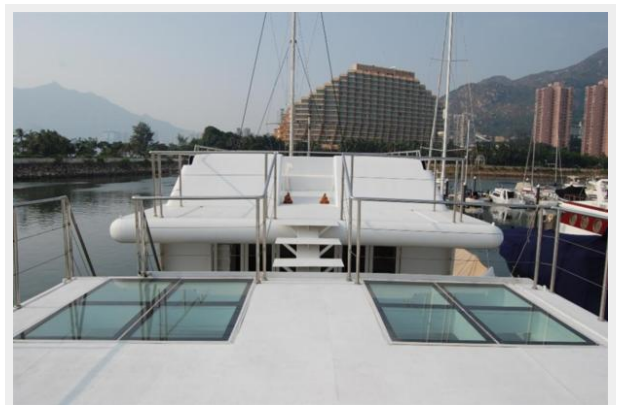
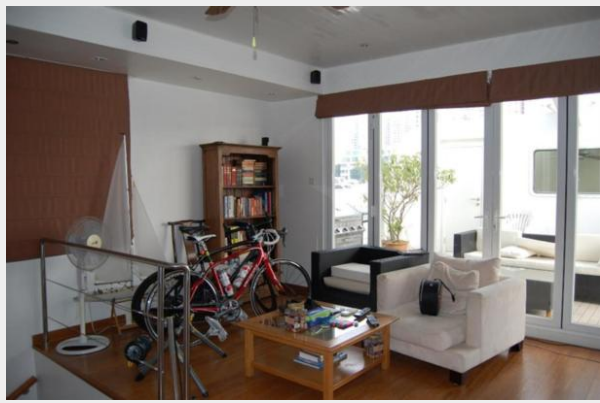
The Company offers the details of this vessel or yacht in good faith but cannot guarantee or warrant the accuracy of this information nor warrant the condition of the vessel. A buyer should instruct his representatives, agents, or his surveyors, to investigate such details as the buyer desires validated. This vessel or yacht is offered subject to prior sale, price change, or withdrawal without notice.

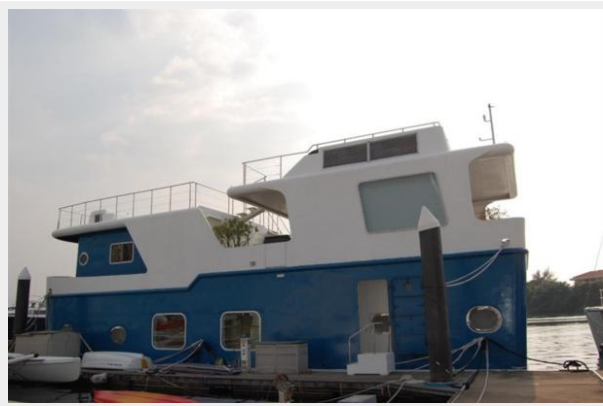
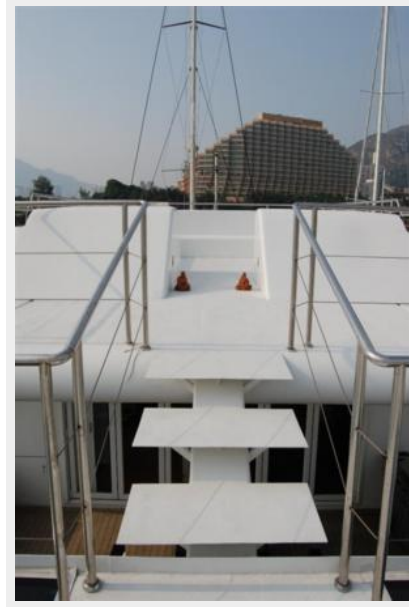
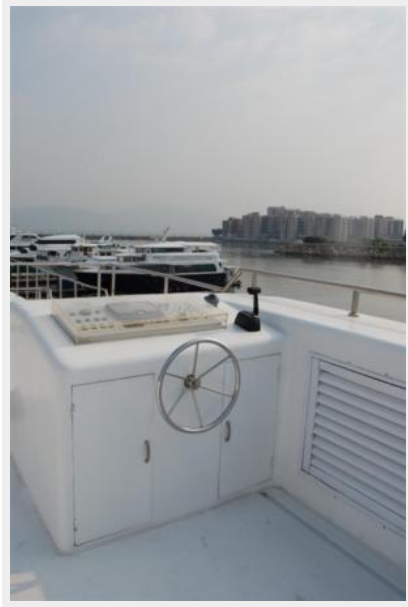
PHOTOS











CONTACTS

Andrey Shestakov, leading yacht broker of the sales department of Atlantic Yacht and Ship Inc. Atlantic Yacht and Ship Inc., the official representative of the Miami/Fort Lauderdale FL headquarters.

Contact details

Email: info@atlanticyachtandship.ru

Web: www.atlanticyachtandship.ru/en/

Telephones

USA: +1 954 274-4435

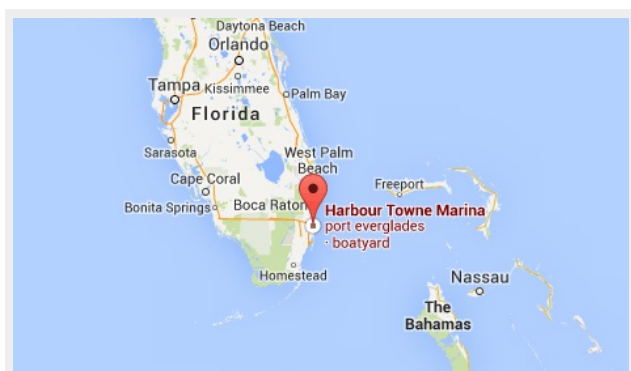
RUS: +7 495 766-6268

Office hours

Monday – Saturday: **9:00 - 21:00** EDT

Sunday: **closed**

Address



Harbour Towne Marina, 850 NE 3rd St,
STE 213, Dania, FL 33004