



ARWAY — OYSTER MARINE LTD



Builder: OYSTER MARINE LTD

Year Built: 1998

Model: Center Cockpit

Price: PRICE ON APPLICATION

Location: United States

LOA: 48' 6" (14.78m)

Beam: 14' 10" (4.52m)

Max Draft: 7' 2" (2.18m)

Our experienced yacht broker, Andrey Shestakov, will help you choose and buy a yacht that best suits your needs **Arway — OYSTER MARINE LTD** from our catalogue. Presently, at Atlantic Yacht and Ship Inc., we have a wide variety of yachts available on our sale's list. We also work in close contact with all the big yacht manufacturers from all over the world.

If you would like to buy a yacht **Arway — OYSTER MARINE LTD** or would like help answering any questions concerning purchasing, selling or chartering a yacht, please call +1 954 274-4435

TABLE OF CONTENTS

TABLE OF CONTENTS	2
SPECIFICATIONS	3
Overview	3
Basic Information	3
Dimensions	3
Speed, Capacities and Weight	3
Accommodations	4
Hull and Deck Information	4
Engine Information	4
DETAILED INFORMATION	5
Mechanical	5
Electrical Equipment	5
Electronics	5
Audio & Visual Equipment	6
Rigging	6
Additional Equipment	7
Exclusions	7
Disclaimer	7
PHOTOS	8
CONTACTS	13
Contact details	13
Telephones	13
Office hours	13
Address	13

SPECIFICATIONS

Overview

Arway is a 1998 Oyster 485 Center Cockpit Deck Saloon. She is a very aggressively priced, quality vessel from Oyster Marine. Oyster is a international market leader and known for solid construction, made for world-class cruising yachts. Her two cabin layout with water tight bulkhead forward and workshop is perfect for the adventurous couple or family looking to accommodate the kids, another couple or additional storage for long term cruising. She is equipped with gear for ease of sailing, handling, navigation and comfort. Arway is out of the water until she sells, so if you are looking to get underway with a quality yacht Arway is the boat for you. Call or Email to talk about how she might fit your needs and schedule an appointment today!

Basic Information

Category: Center Cockpit

Sub Category: Deck Saloon

Model Year: 1998

Year Built: 1998

Country: United States

Vessel Top: Bimini Top

Dimensions

LOA: 48' 6" (14.78m)

LWL: 39' 1" (11.91m)

Beam: 14' 10" (4.52m)

Max Draft: 7' 2" (2.18m)

MFG Length: 48' 0" (14.63m)

Speed, Capacities and Weight

Displacement: 41000 Pounds

Water Capacity: 198 Gallons

Fuel Capacity: 145 Gallons

Accommodations

Total Cabins: 2

Total Heads: 2

Hull and Deck Information

Hull Material: Fiberglass

Engine Information

Engines: 1

Manufacturer: Perkins Diesel

Model: Range 4 M90

Engine Type: Inboard

Fuel Type: Diesel

DETAILED INFORMATION

Mechanical

- Onan 9Kw 60Hz 110V Generator – (2006)
- Lewmar Windlass
- Bow Thruster
- (2) Kyocera 800W Solar Panels – (2012)
- (2) Vac-U-Flush Fresh Water Heads
- 3 Zone, 110V Marine Air AC/Heat
- Grunert Refrigerator
- Grunert Freezer
- Force 10, 4 Burner Stove Top with Oven – Propane
- FireBoy S-2A Propane Fume Detector
- Dripless Shaft Log
- Hot Water Heater, 110V & Engine
- Water Maker, Village Marine MPW600

Electrical Equipment

- 110V Shore Power Inlet
- 110V Breaker Panel
- 110V Outlets
- 110V Microwave, Sharp
- Mastervolt MASS 24/100 Battery Charger
- Mastervolt Battery Monitor
- Mastervolt Heart Interface
- 24V Breaker Panel
- USCG Navigation Lights
- Deck Light
- Outlets
- Lights
- Fans
- Fresh Water Pump
- Shower Sump Pump
- Deck Wash Down Pump
- Hailer

Electronics

- Furuno 4Kw Radar

- Furuno 7" CRT Radar Display, NavStation
- Icom IC-M59 VHF – NavStation
- Icom IC-M710 SSB, NavStation
- Northstar 941X GPS, NavStation
- Garmin 5212 Chartplotter, NavStation
- Raymarine ST-60 Graphic, NavStation
- Raymarine ST-60 Graphic, Helm
- Raymarine ST-6002 Autopilot, Helm
- Raymarine ST-60 Wind, Hatch
- Raymarine ST-60 Speed, Hatch
- Raymarine ST-60 Depth, Hatch
- KVH M3 TracVision - SatTV
- VDO Engine Oil Pressure Gauge
- VDO RPM Gauge
- VDO Temp Gauge
- VDO Voltage Gauge

Audio & Visual Equipment

- Jensen LCD TV –Salon
- Jensen LCD TV – Aft Stateroom
- Jensen DVD/CD/MP3 Stereo
- Cockpit Speakers

Rigging

- Hood, In-Mast Furling
- Mainsail – (2005)
- Doyle Genoa, 135%
- Quantum Gennaker by Thurston – (2013)
- Staysail
- Spin Pole
- Removable Inner Forestay
- Wire Standing Rigging – (2005)
- Windex
- Harken ST, 2-Speed #42 – Mast
- Harken ST, 2-Speed #40 – Mast
- (2) Harken ST, #56, 12V – Cockpit
- Harken ST, #16 – Cockpit
- Harken ST #44 – Cockpit
- Harken Back Stay Adjustor

- Rigid Vang
- Harken Traveler

Additional Equipment

- MaxProp, 3-Blade
- Rope Cutter
- Bimini
- Dodger
- Dinghy Davits
- Cockpit Table
- Cockpit Cushions
- Hatch Screens and Shades
- Anchor – CQR, 45lbs
- Teak Decks
- Radar Reflector
- TV Antenna
- Life Sling
- Fenders
- Docklines
- Whitlock Helm Steering
- Ritchie Magnetic Compass – Helm
- Whale Emergency Manual Bilge Pump
- Halon Engine Room Fire Suppression

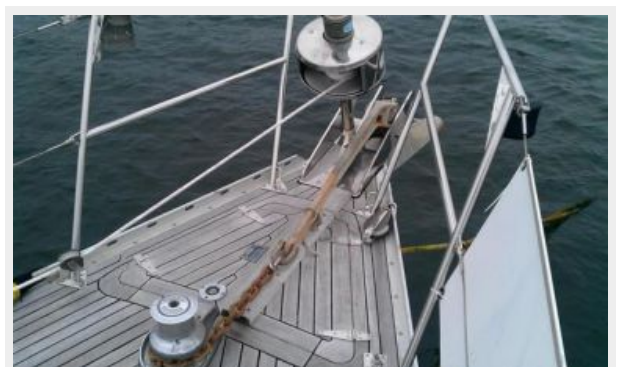
Exclusions

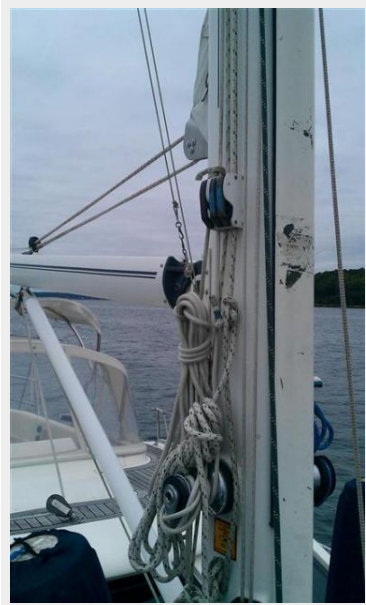
Owner's personal belongings. Owner's personal toys, including but not limited Jet-skis, Tenders, Sea Bobs, Fishing & Diving equipment.

Disclaimer

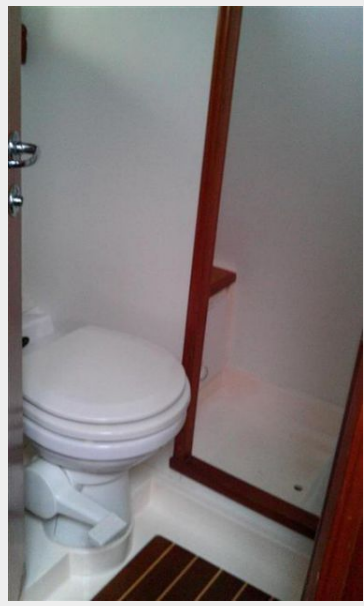
The Company offers the details of this vessel or yacht in good faith but cannot guarantee or warrant the accuracy of this information nor warrant the condition of the vessel. A buyer should instruct his representatives, agents, or his surveyors, to investigate such details as the buyer desires validated. This vessel or yacht is offered subject to prior sale, price change, or withdrawal without notice.

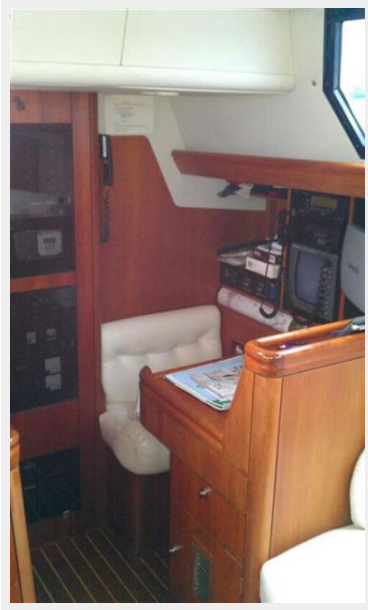
PHOTOS











CONTACTS

Andrey Shestakov, leading yacht broker of the sales department of Atlantic Yacht and Ship Inc. Atlantic Yacht and Ship Inc., the official representative of the Miami/Fort Lauderdale FL headquarters.

Contact details

Email: info@atlanticyachtandship.ru

Web: www.atlanticyachtandship.ru/en/

Telephones

USA: +1 954 274-4435

RUS: +7 495 766-6268

Office hours

Monday – Saturday: **9:00 - 21:00** EDT

Sunday: **closed**

Address



Harbour Towne Marina, 850 NE 3rd St,
STE 213, Dania, FL 33004