



44' 2002 VOYAGE 440 — VOYAGE YACHTS



Судостроитель: VOYAGE YACHTS

Год постройки: 2002

Модель: Catamaran

Цена: \$199,000 USD Продано

Местонахождение: United States Virgin Islands

Длина общая: 44' 0" (13.41m)

Ширина: 25' 1" (7.65m)

Макс. осадка: 3' 5" (1.04m)

Купить 44' 2002 Voyage 440 — VOYAGE YACHTS а также выбрать подходящую вам яхту из нашего каталога яхт вам поможет опытный яхтенный брокер Андрей Шестаков. На сегодняшний день компания Atlantic Yacht and Ship Inc. имеет большое количество яхт в собственном списке продаж, а также тесно сотрудничает со всеми крупными яхтенными производителями по всему миру.

Для того чтобы купить яхту 44' 2002 Voyage 440 — VOYAGE YACHTS а также проконсультироваться по любому вопросу связанному с покупкой, продажей, чартером яхт позвоните по телефону **8 800 234-4456** (бесплатно по РФ).

ОГЛАВЛЕНИЕ

ОГЛАВЛЕНИЕ	2
ХАРАКТЕРИСТИКИ	3
Основная информация	3
Размеры	3
Скорость, вместимость и масса	3
Размещение	3
Корпус и палуба	3
Информация о двигателе	4
ПОДРОБНОЕ ОПИСАНИЕ	5
Manufacturer Provided Description	5
Accommodations	5
ФОТОГРАФИИ	7
Manufacturer Provided Image: 440	7
Manufacturer Provided Image: 440	7
Manufacturer Provided Image: 440	7
Manufacturer Provided Image: 440	7
Manufacturer Provided Image: 440	8
Manufacturer Provided Image: 440	8
Manufacturer Provided Image: 440	8
КОНТАКТЫ	9
Контактная информация	9
Телефоны	9
Время работы	9
Адрес	9

ХАРАКТЕРИСТИКИ

Основная информация

Год постройки: 2002

Тип судна: Catamaran

Модельный год: 2002

Год постройки: 2002

Страна: United States Virgin Islands

Открытая палуба мостика: Нет

Кубрик: Нет

Вертолетная площадка: Нет

Размеры

Длина общая: 44' 0" (13.41m)

Длина по ватерлинии: 40' 6" (12.34m)

Ширина: 25' 1" (7.65m)

Макс. осадка: 3' 5" (1.04m)

Трапы: 62' 0" (18.90m)

Скорость, вместимость и масса

Водоизмещение: 20240 Pounds

Вместимость воды: 150 Gallons

Объем топливного бака: 106 Gallons

Размещение

Всего кают: 4

Всего коек: 4

Всего ком. состава: 4

Каюта капитана: Нет

Корпус и палуба

Материал корпуса: Fiberglass

Информация о двигателе

Двигатели: 2

Производитель: None

Тип двигателя: Inboard

Тип топлива: Diesel

ПОДРОБНОЕ ОПИСАНИЕ

Manufacturer Provided Description

The Voyage 440 is a performance, luxury, bluewater cruising catamaran. The spacious galley up combines with the saloon and cockpit to form an exceptional entertainment area. All cabins have queen-size beds. The layout options offer either the Owners version with three queen-size cabins, and a choice of two or three head / showers; or the Charter version with four queen-size cabins, and four head / showers. The deck has been designed for safety and shorthanded sailing with all controls led aft to the coachroof winches. The 440 also features a generous performance sail plan. The ample deck and trampoline area allow for comfortable outdoor activities, and the large cockpit is shaded by a bimini with hardtop walkway aft. The traveler arch features a step-through to the dive platform.

Accommodations

HULL DECK AND BULKHEADS • Antifouling over epoxy based osmosis barrier • Closed cell PVC foam core, vacuum bonded for stiffness, strength and minimal weight • Forward water tight compartments with horizontal bulkheads • Hand laid-up GRP construction using multi layers of Quadraxial glass roving, isophthalic and orthophthalic polyester resin and other highest grade material • Low aspect reinforced keels • Marine ply and balsa core on critical structure bulkheads for added strength and stiffness • Reinforced fitting areas for cleats and chain plates • Skeg supported rudders

DECK FITTINGS: STAINLESS STEEL, Grade 316 • Bow pulpits with teak seats • Double guard wires • Grab rails on coach roof • Pushpits on stern with brackets for life ring buoys and overboard lights • Stanchions and stanchion bases • Swim ladder Starboard • Water stays attachment points for bow sprit • Gates in guard wires • Swim ladder Port

DECK EQUIPMENT • 1 x Electric windlass: LOFRANS • 2 x Primary winches on coach roof: ANDERSEN 46ST • 2 x Secondary winches in cockpit: ANDERSEN 46ST • 8 x Aluminium mooring cleats • Teak walkway between trampolines • Tracks, cars, jammers and blocks • Webbing trampolines (one season) • Propane BBQ (PARKER Grill) on Dive Platform • Snorkeling Equipment

PLUMBING: • 2 x Black water systems, holding tanks • 2 x Manual bilge pumps • 2 x Water heater 22 litre • 4 x Automatic electric bilge pumps • Pressurized hot and cold deck shower (starboard) • Self draining cockpit

HATCHES AND WINDOWS: • 11 x LEWMAR hatches • 2 x GRP locker lids: foredeck • 7 x GRP locker lids: cockpit • 8 x LEWMAR port lights • 8 x Reflective laminated safety glass windows • Anodised aluminium framed sliding door with safety glass and fixed opening positions • Ventilation/Escape hatch with teak grid in galley • Dive equipment hatch and locker in aft coaming

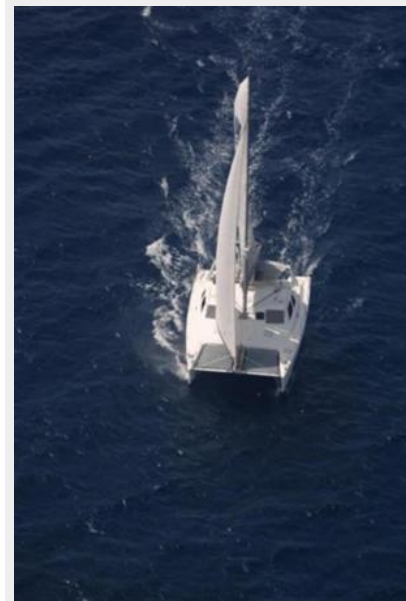
SAFETY EQUIPMENT: • Basic safety equipment including: flares, life jackets, first aid kit and life rings

RIGGING: • 7/8th fractional rig • Anchor chain lead internally through compression post • Anodised Aluminium mast, boom, cross beam and double compression post • Attachment point for bow sprit • Color coded sheets and control lines • Double purchase main halyard • Flag halyards, Port and Starboard • Mast

supported by triple spreaders, intermediate and cap shrouds, forestay and inner forestay • Reefing lines x 2 and luff pendants x 2 • Telescopic boom derrick for hauling dinghy on to dive platform SAILS: • Fully battened main with large roach, 2 reef points, 10.3 oz high modulus, cross cut Dacron (new) • Furling genoa with foam luff and UV cover, 7.3 oz high modulus cross cut Dacron • HARKEN battcar system for mainsail • Mainsail stowage pack with lazy jacks • PROFURL genoa roller furler COCKPIT/AFT DECK: • 7 x Storage lockers • Dingy stowage supports and BBQ mounting point • Double helmsman's seat • GRP Cockpit table • Sheet pouches x 2, Utility pouch x 1 • Steering console including • Instrument console • Stainless steel steering wheel • Teak dive platform/aft deck • Traveller arch • Cockpit Cushions • Cockpit table - White GRP – Removable ACCOMMODATION: MAIN SALOON • Izit Leather (new) upholstered settee • Coffee table • CORIAN type work surfaces • Modules in moulded GRP • Standing height throughout 1.9m • Storage in seating modules GALLEY: • 4 x Burner propane hob and propane oven • CORIAN type work surfaces with stainless steel rails and fiddles • Facility for microwave oven • Front opening refrigerator - 12V air cooled ADLER/BARBOUR • Large recessed drip tray • Modules in moulded GRP • Pressurized hot and cold water • Stainless steel sink • Stainless steel waste chute with cover • Top opening freezer, 12V air cooled ADLER/BARBOUR • Galley Appointments FORWARD AND AFT CABINS: • Access to bow storage • Cabin and reading lights • Cabin lights & reading lights • Cave lockers • Hanging and storage cupboards • Laundry locker with upholstered cover • Modules in moulded GRP • Queen size bunk with split mattresses • Stainless steel towel rail • Cabin Appointments BOW CABINS • Cabin Appointments • Cabin Light • Fan • Hatch • Single V-Berth HEAD COMPARTMENTS: • Integrated shower grate and sump • Manual marine toilet • Mirror • Modules in moulded GRP • Stainless steel towel rail • Vanity cabinet • Wash basin and shower with hot and cold water • 4 x Heads, 2 x Port, 2 x Stbd NAVIGATION CENTRE: • Access panels to electrical installation and systems • Instrument console • Navigation seat • Chart table with recessed chart stowage INSTRUMENTATION: • Compass • ICOM M-402 VHF Radio with antenna on mast • RAYMARINE ST60 Tridata & Wind COMFORT AND LIFESTYLE: • Dimmers, Courtesy Lights, Boom light, 12V outlet • Sound system, 12V Radio/CD and 4 Marine speakers in saloon/cockpit ELECTRICS: • 2 x 160A AMPLE alternators with SMART multi stage regulators • 2 x Engine start batteries (12V) @ 65 AH • AC shore cable socket • Battery isolator switches • Ceiling lights • Circuit breaker panel • Cockpit lights • Deck light • Interior AC outlets: 3 in saloon, 1 in each cabin • Lazarette and engine compartment lights • LINK 2000 battery management system • Mast top and lower navigation lights • Ships load battery banks (12V) gel - 300AH x 2 (600AH) • HEART 25 Inverter/Charger 12V to 110V • Shore power cable 30A ENGINE EQUIPMENT: • 2 x Instrument panels with engine hour meters • 2 x 55A alternators • High pressure fuel lines • Sound insulation • 2 x 40Hp fresh water cooled YANMAR diesel engines with saildrives and fixed propellers MOORING GEAR AND GROUND TACKLE: • 25kg DELTA anchor (new 08) with tipper • 50m galvanized chain (new 08) and 50m nylon anchor rode • Anchor bridle with thimbles for anchoring • Dock lines and fenders • Two anchor rollers, one with tipper • FORTRESS anchor F23 INFLATABLE • 12ft APEX RIB tender (new 08) with 15Hp outboard engine

ФОТОГРАФИИ

Manufacturer Provided Image: 440



Manufacturer Provided Image: 440



Manufacturer Provided Image: 440



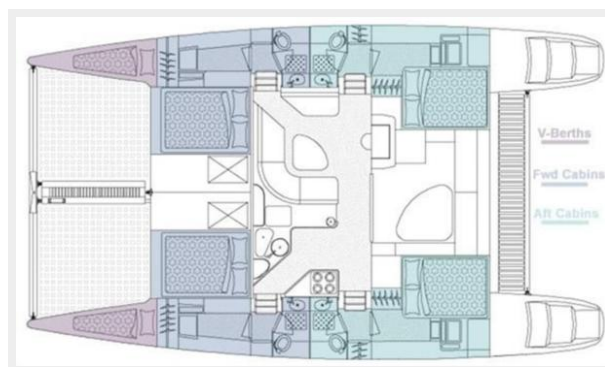
Manufacturer Provided Image: 440



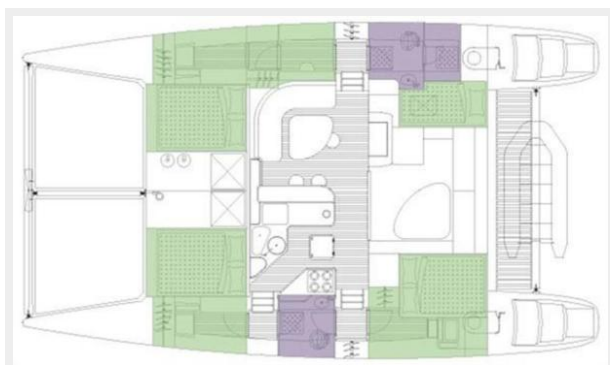
Manufacturer Provided Image: 440



Manufacturer Provided Image: 440



Manufacturer Provided Image: 440



КОНТАКТЫ

Андрей Шестаков (Andrey Shestakov) – ведущий яхтенный брокер отдела продаж яхт и судов компании Atlantic Yacht and Ship Inc. Официальный представитель Atlantic Yacht and Ship Inc. для русскоговорящих клиентов в центральном офисе компании в Майами/Форт Лодердейл/Флорида/США.

Контактная информация

Email: info@atlanticyachtandship.ru

Web: www.atlanticyachtandship.ru

Телефоны

Бесплатный звонок по России: **8 800 234-4456**

Москва и Московская область: **+7 495 766-6268**

Краснодарский край: **+7 918 465-6644**

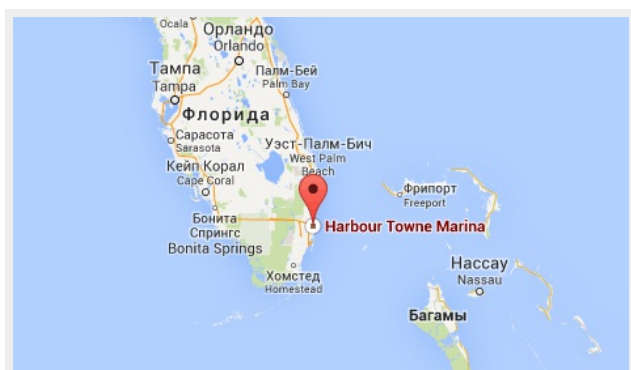
США, Майами, Флорида: **+1 954 274-4435**

Время работы

Понедельник – Суббота: **9:00 - 21:00 EDT**

Воскресенье: **Закрето**

Адрес



Harbour Towne Marina, 850 NE 3rd St,
STE 213, Dania, FL 33004