



LEOPARD — LEOPARD



Builder: LEOPARD

Year Built: 1998

Model: Motor Yacht

Price: PRICE ON APPLICATION

Location: United States

LOA: 75' 5" (22.99m)

Beam: 17' 6" (5.33m)

Min Draft: 5' 8" (1.73m)

Cruise Speed: 24 Kts. (28 MPH)

Max Speed: 36 Kts. (41 MPH)

Our experienced yacht broker, Andrey Shestakov, will help you choose and buy a yacht that best suits your needs **Leopard — LEOPARD** from our catalogue. Presently, at Atlantic Yacht and Ship Inc., we have a wide variety of yachts available on our sale's list. We also work in close contact with all the big yacht manufacturers from all over the world.

If you would like to buy a yacht **Leopard — LEOPARD** or would like help answering any questions concerning purchasing, selling or chartering a yacht, please call **+1 954 274-4435**

TABLE OF CONTENTS

TABLE OF CONTENTS	2
SPECIFICATIONS	5
Overview	5
Basic Information	5
Dimensions	5
Speed, Capacities and Weight	5
Accommodations	6
Hull and Deck Information	6
Engine Information	6
DETAILED INFORMATION	7
Highlights	7
Cockpit	7
Electronics	7
Salon	8
Galley	8
Master Stateroom	8
Master Head	8
VIP Stateroom	9
VIP Stateroom Head	9
Guest Stateroom	9
Crew Cabin	9
Guest and Day Head	10
Crew Head	10
Engine Room	10
Engines	11
Electrical	11
Lazarette/Garage	11
Exclusions	11

Disclaimer	11
PHOTOS	13
Leopard 75	13
Sunpad area	13
Bow	13
Starboard Side	13
Cockpit	13
Cockpit	13
Cockpit Seating area	14
Cockpit Dinning area	14
Helm	14
Helm	14
Helm Controls	14
Helm	14
Helm	15
Stair to the cabin	15
Stair to the cabins	15
Salon	15
Galley	15
TV Area	15
Master Stateroom	16
TV Master Stateroom	16
Master Head	16
Vip Stateroom	16
Guest Cabin	16
Guest Cabin Tv	16
Guest and Day Head	17
Head	17
Washer & Dryer	17

Crew Cabin	17
Crew Head	17
Leopard	17
CONTACTS	18
Contact details	18
Telephones	18
Office hours	18
Address	18

SPECIFICATIONS

Overview

Beautiful example of an early "open" sportcruiser with a contemporary Italian design inside and out. Spacious cockpit with retractable sunroof. Sunpads on bow and aftdeck, garage, respectable crew quarters with separate entrance, stand-up engine room, easy walkaround and speeds up to 30 knots make this yacht a preferred choice. Captain maintained, frequently updated at a very attractive price this yacht is a great buy. The seller is moving up to a bigger motor yacht.

Basic Information

Category: Motor Yacht

Model Year: 1998

Year Built: 1998

Country: United States

Vessel Top: Hardtop

Dimensions

LOA: 75' 5" (22.99m)

Beam: 17' 6" (5.33m)

Min Draft: 5' 8" (1.73m)

Speed, Capacities and Weight

Cruise Speed: 24 Kts. (28 MPH)

Max Speed: 36 Kts. (41 MPH)

Gross Tonnage: 72000 Pounds

Water Capacity: 315 Gallons

Fuel Capacity: 1600 Gallons

Accommodations

Total Cabins: 3

Sleeps: 6

Total Heads: 3

Crew Cabin: 1

Crew Sleeps: 2

Crew Heads: 1

Hull and Deck Information

Hull Material: Fiberglass

Engine Information

Engines: 2

Manufacturer: MAN

Model: 12V2842LE

Engine Type: Inboard

Fuel Type: Diesel

DETAILED INFORMATION

Highlights

Beautiful example of an early "open" sportcruiser with a contemporary Italian design inside and out. Spacious cockpit with retractable sunroof. Sunpads on bow and aft deck, garage, respectable crew quarters with separate entrance, stand-up engine room, easy walkaround and speeds up to 30 knots make this yacht a preferred choice. Captain maintained, frequently updated at a very attractive price this yacht is a great buy. The seller is moving up to a bigger motor yacht.

Cockpit

The cockpit area and deck have air conditioning or natural ventilation through the sunroof. There is a wing opening through the port and starboard windows, and also a roll-up clear vinyl screen aft. The access hatch to the main accommodation is located on the port side forward, while the starboard side has the main helm control station.

- TV
- Ice maker
- Larger built-in drink fridge
- Air conditioning
- Storage locker
- Wash basin
- Two person bench seat with foot rest
- Single bench seat to port
- U-shape seating with corian topped table on the port side
- Bench seating to the starboard
- Marine Air A/C controls unit

Electronics

- Northstar 951X GPS navigation
- Garmin GPS map 4212
- Robertson Autopilot AP 35
- Simrad IS12 speed and depth
- Furuno 38 mile radar
- Standard horizon eclipse VHF radio
- Danforth high speed compass
- ACR Rcl-100 spot light
- Satellite TV system

Salon

You enter the salon through an electric door and go down below to a comfortable curved black leather settee on the starboard side, excellent for lounging. The walls and doors have a rich pearl laquer finish. An entertainment center with plasma TV is located on the port side. There is a lot of storage room as well as multiple cabinets for china ,glassware, and silver, all located in the same area.

- Samsung TV HDTV
- Sony AM/FM stereo receiver and
- Audio control center with surround sound system 5.1
- Marine Air A/C controls unit
- Satelite TV Receiver
- Plenty of storage and Cabinets for china
- Glassware
- Silverware

Galley

The galley is compact with corian counter tops and stainless steel sinks.

- Miele combi-set glass Stove top
- Miele full size automatic dishwasher
- Gold star microwave oven
- Refrigerator/Freezer
- Miele hood extractor fan
- Under the floor chest ice box/ Freezer

Master Stateroom

The spacious master stateroom is forward with a queen-sized bed and an ensuite head.

- Vizo LCD TV
- Sony DVD and VHF video player
- Stereo speakers (4)
- Marine air A/C controls unit
- Closets on port and starboard side
- Under the bed storage
- Ample book storage for his & hers safe

Master Head

The master head is located on the aft to the port of the stateroom.

- Wash basin with storage beneath and lockers
- Shower stall type
- Electric techmar head
- Beautiful marble floor

VIP Stateroom

The VIP Cabin is located on the port side midship with a queen bed and an ensuite head.

- Sony AM/FM Stereo system with CD player
- Marine air A/C controls unit
- Hanging closets
- Under the bed storage

VIP Stateroom Head

The head is located on the forward part of the stateroom.

- Wash basin with storage below.
- Stall shower type
- Techmar head
- Beautiful marble floor

Guest Stateroom

The guest stateroom is located on the starboard mid-ship with twin beds and ensuite head.

- Sony TV
- Sony FM/AM Stereo CD
- Two speakers
- Marine Air A/C controls unit
- Closet space
- Under the bed storage

Crew Cabin

The crew cabin can be accessed though the deck hatch under the starboard aft deck sun bathing pad or through the aft bulkhead via the tender garage.

- Sony AM/FM/CD stereo player
- Beds(2)
- Hanging closet
- Marine air A/C controls unit

Guest and Day Head

The guest and day head is located forward of the port stateroom.

- Wash basin with storage below
- Stall type shower
- Techmar head
- Beautiful marble floor
- Combination washer and dryer

Crew Head

- Wash basin with storage below
- Techmar head
- Wet head shower
- Teak floor

Engine Room

The stand-Up engine room can be accessed through the tender garage or through the deck hatch under the starboard aft deck sun bathing pad.

- CO2 fire suppression system
- Racor fuel filters
- A/C compressors(2)
- Chilled water circulating pump
- Control panel for marine Air A/C system
- Steering compartment
- Battery charger
- Bidge pump
- Control panel for marine air A/C system
- Main fuse control box
- Small work bench
- 110v AC outlet
- Main engine start batteries
- House batteries

Engines

Engine Freshly Rebuild Man Engines

Total Power: 1200

Cruising Speed: 24 Max Speed: 36

Tanks

Fuel: 1600 Gl Fresh Water: 320

Electrical

- Vitus bow thuster 24 volt
- Kohler generator's (2) 21 KW
- Marine air 84,000 Btu's chilled water circulation
- Dual 50 amp 240 volt single phase
- 24 volt ship's Power
- Isolation transformer
- Galvanic isolator for ground system by quick silver

Lazarette/Garage

The lazarette and tender garage are accessed via semi-watertight door aft in the engine room or from the swim platform.

- Overhead smoke detector
- Handheld fire extinguisher
- CO2 fire suppression system
- Overhead incandescent caged light fixtures

Exclusions

Owner's personal belongings. Owner's personal toys, including but not limited Jet-skis, Tenders, Sea Bobs, Fishing & Diving equipment.

Disclaimer

The Company offers the details of this vessel or yacht in good faith but cannot guarantee or warrant the accuracy of this information nor warrant the condition of the vessel. A buyer should instruct his representatives, agents, or his surveyors, to investigate such details as the buyer desires validated. This vessel or yacht is offered subject to prior sale, price change, or withdrawal without notice.

PHOTOS

Leopard 75



Sunpad area



Bow



Starboard Side



Cockpit



Cockpit



Cockpit Seating area



Cockpit Dining area



Helm



Helm



Helm Controls



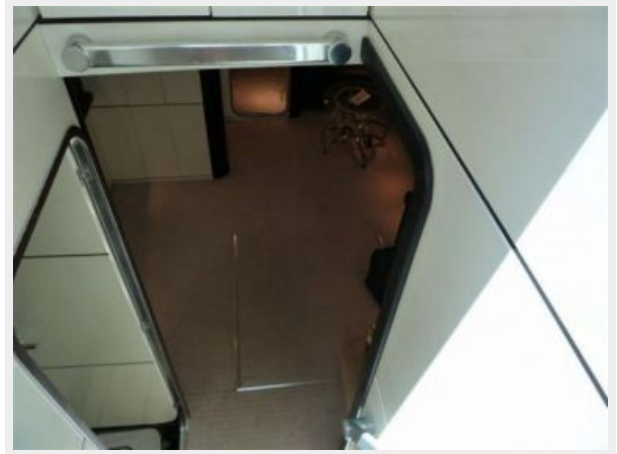
Helm



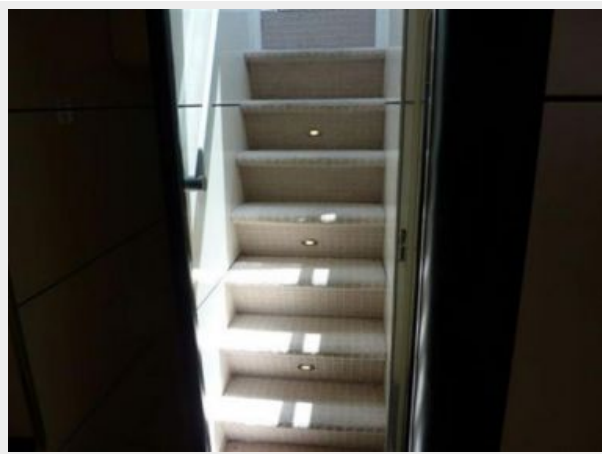
Helm



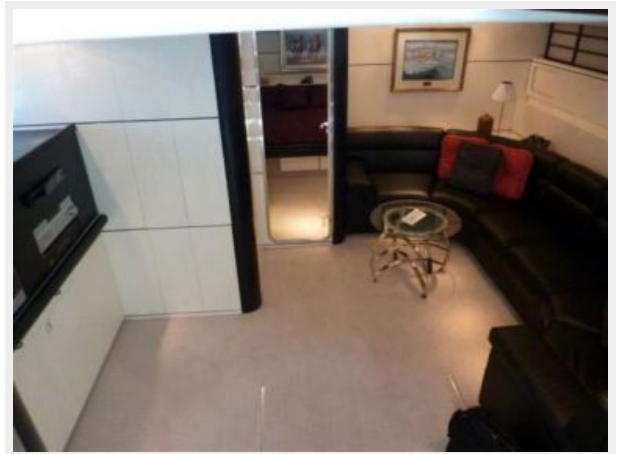
Stair to the cabin



Stair to the cabins



Salon



TV Area



Galley



Master Stateroom



TV Master Stateroom



Master Head



Vip Stateroom



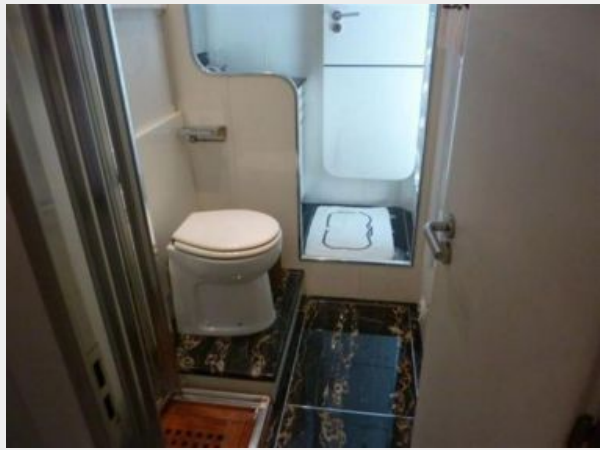
Guest Cabin



Guest Cabin Tv



Guest and Day Head



Head



Washer & Dryer



Crew Cabin



Crew Head



Leopard



CONTACTS

Andrey Shestakov, leading yacht broker of the sales department of Atlantic Yacht and Ship Inc. Atlantic Yacht and Ship Inc., the official representative of the Miami/Fort Lauderdale FL headquarters.

Contact details

Email: info@atlanticyachtandship.ru

Web: www.atlanticyachtandship.ru/en/

Telephones

USA: +1 954 274-4435

RUS: +7 495 766-6268

Office hours

Monday – Saturday: **9:00 - 21:00** EDT

Sunday: **closed**

Address



Harbour Towne Marina, 850 NE 3rd St,
STE 213, Dania, FL 33004