



CAPTAIN'S CHOICE — HATTERAS



Builder: HATTERAS

Year Built: 1985

Model: Motor Yacht

Price: PRICE ON APPLICATION

Location: Canada

LOA: 58' 9" (17.91m)

Beam: 18' 2" (5.54m)

Min Draft: 4' 10" (1.47m)

Max Draft: 5' 0" (1.52m)

Cruise Speed: 15 Kts. (17 MPH)

Max Speed: 18 Kts. (21 MPH)

Our experienced yacht broker, Andrey Shestakov, will help you choose and buy a yacht that best suits your needs **CAPTAIN'S CHOICE — HATTERAS** from our catalogue. Presently, at Atlantic Yacht and Ship Inc., we have a wide variety of yachts available on our sale's list. We also work in close contact with all the big yacht manufacturers from all over the world.

If you would like to buy a yacht **CAPTAIN'S CHOICE — HATTERAS** or would like help answering any questions concerning purchasing, selling or chartering a yacht, please call **+1 954 274-4435**

TABLE OF CONTENTS

TABLE OF CONTENTS	2
SPECIFICATIONS	5
Basic Information	5
Dimensions	5
Speed, Capacities and Weight	5
Accommodations	5
Hull and Deck Information	6
Engine Information	6
DETAILED INFORMATION	7
Vessel Walkthrough	7
Pilothouse Equipment	7
Salon	8
Galley	8
Forward Stateroom	8
Forward Guest Head	9
Companionway	9
Mid Guest Cabin	9
Mid Guest Head	9
Master Cabin	10
Master Head	10
Foredeck	10
Aft Deck	10
Flybridge	11
Engine Room	11
Electrical	11
Remarks	11
Exclusions	12
Disclaimer	12

Exclusions	12
Disclaimer	12
PHOTOS	13
Pilothouse	13
Helm	13
Garmin GPS/Radar	13
Lower Helm Seat	13
Salon TV	13
Salon Looking Forward	13
Salon to Port	14
Dinette	14
Galley	14
Forward Cabin	14
Forward Head	14
Companionway	14
Companionway Laundry	15
Companionway Looking Forward	15
Mid Guest Cabin Head	15
Mid Guest Cabin	15
Master Cabin Looking Aft	16
Master Cabin to Port	16
Master Head	16
Master Cabin to Starboard	16
Foredeck	16
Aft Deck	16
Aft Deck Bar	17
Aft Deck Seating	17
Helm	17
Helm Chairs	17

Flybridge	17
Starboard Engine	17
Port Engine	18
Port Engine Room	18
Gen/Room AC Units	18
Stern	18
Stabilizers	18
Bow Thruster	18
Stern	19
Alternate Profile	19
Alternate Profile	19
Alternate Profile	19
CONTACTS	20
Contact details	20
Telephones	20
Office hours	20
Address	20

SPECIFICATIONS

Basic Information

Category: Motor Yacht

Sub Category: Flushdeck

Model Year: 1985

Year Built: 1985

Country: Canada

Vessel Top: Bimini Top

Fly Bridge: Yes

Dimensions

LOA: 58' 9" (17.91m)

LWL: 53' 9" (16.38m)

LOD: 58' 0" (17.68m)

Beam: 18' 2" (5.54m)

Min Draft: 4' 10" (1.47m)

Max Draft: 5' 0" (1.52m)

Clearance: 18' 10" (5.74m)

MFG Length: 58' 0" (17.68m)

Speed, Capacities and Weight

Cruise Speed: 15 Kts. (17 MPH)

Cruise Speed RPM: 2000 Kts.

Max Speed: 18 Kts. (21 MPH)

Max Speed RPM: 2300 Kts.

Displacement: 79000 Pounds

Gross Tonnage: 41 Pounds

Water Capacity: 350 Gallons

Holding Tank: 210 Gallons

Fuel Capacity: 1030 Gallons

Accommodations

Total Cabins: 3

Total Berths: 5

Sleeps: 6

Total Heads: 3

Hull and Deck Information

Hull Material: Fiberglass

Deck Material: Fiberglass

Hull Configuration: Modified V-Hull

Hull Finish: Fiberglass

Hull Designer: J. Hargrave

Exterior Designer: Hatteras Yachts

Interior Designer: Hatteras Yachts

Engine Information

Engines: 2

Manufacturer: Detroit Diesel/Allison

Model: 8V92TI

Engine Type: Inboard

Fuel Type: Diesel

DETAILED INFORMATION

Vessel Walkthrough

Boarding is via the port and starboard Pilothouse gates where you can walk aft to the Aft Deck wing door or into the Pilothouse.

Starting forward is a large Helm Area with a double bench seat storage below, a centerline helm with electronics above and below, port and starboard side deck doors and additional chart drawers and storage below.

Next aft and open to the Pilothouse is the Salon with a TV cabinet to port followed by a three person upholstered sofa with tables fore and aft, each with a table lamp. To starboard are two leather chairs with an end table between.

Next aft through a hinged door is the very spacious Aft Deck with hard side sliding windows, wing doors and a clear vinyl curtain aft above the rail.

Forward is a full bar with ladder access to the Flybridge. Aft is seating and a table.

Starting below from the Pilothouse, the Galley is four steps down with a booth dinette to starboard with the Galley including full size appliances to port.

Forward and down three stairs is the Forward Guest Cabin with two oversize upper lower bunks to starboard with a full size hanging locker, drawer storage and access to the en suite Head with stall shower, vanity and marine head.

Going aft from the Galley a Centerline Companionway leads past a Laundry Center on the starboard side followed by a Guest Head with a stall shower, vanity and marine toilet. To port is a Cabin with twin lower berths, a two drawer nightstand between a full size hanging locker and portholes on the outboard side.

Next aft is the private Master Suite with a king size centerline berth, an L shaped settee to starboard and a bank of drawers to port. Forward to port is a large walk in closet. Forward to starboard is a Head with a stall shower vanity and a marine toilet.

Pilothouse Equipment

All the way forward on the main deck is the Pilothouse open to the Salon. Unlike many Euro Cruisers this station offers excellent 360 degree visibility.

Stainless steel Destroyer wheel Hynautic hydraulic clutch & throttle controls 6" Danforth chrome binnacle magnetic compass Full analog engine gauges (2) Standard Horizon VHF radios Simrad

AP 20 autopilot Signet wind speed indicator Intercom Furuno FCV 667 36 mile radar B & G digital speed indicator B & G digital depth sounder Garmin 740 plotter with 36 mile radar Naiad stabilizer controls Security system with motion detector AC shore/gen switching panels AC main systems circuit breaker Solderberg chart light (3) Windshield wiper controls Horn Windlass controls Bilge pump controls with indicator lights (5) Teak drawers Fold down footrest for double helm seat Teak parquet sole DC lighting overhead Port & starboard sliding wing doors Systems monitor with audio/visual alarms for oil pressure, water temp, bilge level, AC power, fire, exhaust temp and transmission temp Emergency engine stops Engine Room blower controls Trim tab controls

Salon

The Salon has large windows (after two open) port, starboard and aft. Drapes with a valance above cover the windows.

To starboard are two leather chairs with an open end table and table lamp above. An Oriental rug is centered on the Salon carpeting. To port is a three person upholstered sofa with tables fore and aft each with a table lamp.

All the way forward is a TV table with an LCD TV. Hidden from view is a Panasonic DVD player and stereo.

SMX digital controls deliver air/heat.

Galley

To starboard is a newly upholstered dinette with a new wood tabletop. Windows with drapes to both port and starboard offer great ambient lighting.

Equipment includes: Newer Frigidaire double door refrigerator/freezer Sharp Carousel microwave oven Stainless steel sink Kenmore garbage disposal Maytag dishwasher Modern Maid eye level oven w/exhaust vent Modern Maid stainless steel cook top New Galley floor Overhead AC - DC lighting SMX air conditioning/heat controls (12) Mica cabinet doors (4) Sliding door cabinets (3) Drawers (3) Fluorescent counter lights (2) Stereo speakers

Forward Stateroom

Down two steps from the Galley is the Forward Cabin with two oversize bunks to starboard. Two large storage drawers are under the lower berth. Each berth has a reading light. Access to the divided rope chain locker is forward.

Next aft to port are cabinets and chest high countertops with a porthole and drapes above. Next

aft is access to the en suite Head. To starboard is a full size hanging locker. Also in the cabin are SMX AC heat controls, an LCD TV and a carpeted sole with access to the newly installed bow thruster.

Forward Guest Head

To port within the cabin is a mica vanity with two storage cabinets below a china sink above, large mirrored medicine cabinet above and a stall shower with a bi fold tempered glass door, a handheld or wall mountable fixture, a light and an exhaust fan. The toilet is an electric Galley Maid model.

Companionway

Going aft from the Galley and down three steps is the Centerline Companionway with a newer Whirlpool dryer to starboard behind a teak door. The Companionway continues between the Guest Head and Mid Guest Cabin, then between the port and starboard Engine Rooms terminating at the entrance to the Master Cabin.

Mid Guest Cabin

On the portside are twin lower berths separated by a two drawer teak nightstand with a table lamp above. Each berth has an upholstered headboard with sliding cabinet door storage in the soffit above.

Additional custom storage is above the inboard berth.

Above the outboard berth are two opening portholes with drapes. At the foot of the outboard is a full size auto lit hanging locker. Also in the Mid Guest Cabin is an LCD TV and an SMX AC controller.

Mid Guest Head

Opposite to starboard is a Guest Head with a mica vanity with two drawers below, a china sink and two large sliding mirror panels serving as a medicine cabinet. Forward is a stall shower with a tempered glass bi fold door, a seat, porthole, light, fan and a handheld or wall mountable fixture.

The toilet is a Galley Maid electric model.

Master Cabin

All the way aft and just slightly to port is a custom king size berth on a pedestal platform. To starboard is an L shaped settee followed by a TV cabinet with LCD TV and the en suite Head going forward.

On the portside of the cabin is a nightstand and a bank of six drawers with storage below. Two portholes port and two starboard plus two large portholes as escape hatches aft are all covered by full drapes.

Also in this cabin is a carpeted sole, a very large walk in cedar lined auto lit locker to port and stereo speakers.

Master Head

Within the cabin to starboard is the ample Master Cabin Head with a mica vanity, two drawers, china sink and large sliding mirrored panels as a medicine cabinet. The stall shower has a tempered glass bi fold door, a light, a porthole and wall mounted or handheld fixture. The toilet is a Galley Maid electric model.

Foredeck

Fiberglass nonskid decks Hatteras fiberglass bow pulpit 60 Lb. Danforth anchor w/all chain rode (250') Galley Maid chain windlass Up & down foot switches for windlass (2) Foredeck dunnage boxes Marquipt 7 step Tide Ride boarding ladder Double handrails for Marquipt Molded bow seat w/removable cushions & cover Stainless steel bow rail w/varnished teak Rail aft of second stanchion Rayline chrome remote spotlight (3) Windshield wipers/washers Windshield cover International Navigation lights Rail breaks at Pilothouse doors Weatherboards aft of rail breaks Dual spring line cleats Forward deck hatch into Forward Cabin Overhead lights at Pilothouse doors Grey painted boot top & sheer stripe Fender travelers on aft hull sides port & starboard Dual trumpet horn Joe rail courtesy lights, (3) port, (3) starboard Dockside water connection port & starboard Telephone/TV inlet port & starboard

Aft Deck

Fiberglass nonskid sole Removable carpet (2) Hinged wing doors Center rail break w/ladder to platform Fiberglass swim platform w/hinged swim ladder Wet bar w/icemaker Storage cabinets below bar Loveseat & end table Hard glass sliding side panels Rollup curtains aft AC & DC overhead lighting 7 Step teak & stainless steel ladder to Flybridge Hinged deck hatch to Bridge Deck Stereo speakers

Flybridge

Fiberglass nonskid sole Stainless steel railings w/Micarta weatherboards Aluminum radar arch (hinged) New hydraulic 1200 lb. tender davit Bimini top (new) 40 mil. & 60 mil. Bimini top enclosure curtains Helm cover Venturi windshield w/stainless steel handrail Intellian Sat TV system New broadcast TV antenna Centerline helm Horizon Intrepid VHF radio Air horns L shaped starboard bench seating w/cover & storage below Full analog engine gauges Windlass controls Start/stop switches Stainless steel Destroyer wheel Danforth Constellation magnetic compass in chrome binnacle Simrad AP 20 autopilot Hydraulic clutch & throttle controls Glendinning engine synchronizers Trim tab controls Blower switches w/indicator lights Furuno LCD radar Naiad stabilizer controls (3) Pompanette helm chairs with covers Stereo speakers Recessed light on radar arch Rayline searchlight controls Garmin GPS/plotter Northstar 941 GPS/plotter

Engine Room

900 hours on 8V92's SMOH 650 HP Newer exhaust risers (2006) incl. blanket Naiad 254 stabilizer system New 15 HP Side Power bow thruster (5) Marine Air air conditioning compressors (3 new 2007, 1 new in 2010) Fuel shutoff valves Fuel priming pumps Airsep crankcase ventilation system Oil change pump Freshwater cooling Racor 1000 fuel filters for each engine 120V Fluorescent lighting in Engine Room 32V Incandescent lighting in Engine Room (2) Spare props Glendinning synchronizer Engine Room blowers Freshwater spigot w/hose Engine driven air compressor Allison MH20L transmissions w/2:1 reduction ratio (4) Auto bilge pumps (3) Shower sumps 75 Lb. CO2 fire suppression system in Engine Room 35 Lb. CO2 fire suppression system in Generator Room 4 Blade 24" x 26" main propeller 2.5" Stainless steel prop shafts 40 Gallon hot water heater Y valves for heads

Electrical

12/32 Volt DC electrical systems 120/240 Volt AC electrical systems 2007 Northern Lights 20 KW generator La March A-4030 32 V Constavolt (4) 8 Volt batteries for engine starting (1) 12 Volt generator battery New 3200 watt Outback converter w/mate control (2) 50 Amp shore cord connections port & starboard GFCI outlets in all wet areas Breaker protected circuit panels Racor fuel filter for generator (2) Power Former 50 amp isolation transformer (5) Battery cutoff switches Guest Charger Pro 12 volt battery charger

Remarks

Aptly named this 58' Hatteras was purchased by a professional husband and wife captain team after an exhaustive search for the perfect boat several years ago.

Full time employment on a larger yacht and a new home ashore has brought about putting

CAPTAIN'S CHOICE on the market. Stored undercover in "freshwater" till sold, this 58' Hatteras has stabilizers and a newer bow thruster plus an overall condition that makes her stand out from her sisterships.

Exclusions

While every effort was made to list all pertinent included equipment aboard CAPTAIN'S CHOICE, there are some personal belongings aboard. Prospective purchasers should assume any item not specifically mentioned herein will not convey at closing. Named exclusions are owner's tools and personal belongings.

Disclaimer

The Company offers the details of this vessel in good faith but cannot guarantee or warrant the accuracy of this information nor warrant the condition of the vessel. A buyer should instruct his agents, or his surveyors, to investigate such details as the buyer desires validated. This vessel is offered subject to prior sale, price change, or withdrawal without notice.

Exclusions

Owner's personal belongings. Owner's personal toys, including but not limited Jet-skis, Tenders, Sea Bobs, Fishing & Diving equipment.

Disclaimer

The Company offers the details of this vessel or yacht in good faith but cannot guarantee or warrant the accuracy of this information nor warrant the condition of the vessel. A buyer should instruct his representatives, agents, or his surveyors, to investigate such details as the buyer desires validated. This vessel or yacht is offered subject to prior sale, price change, or withdrawal without notice.

PHOTOS

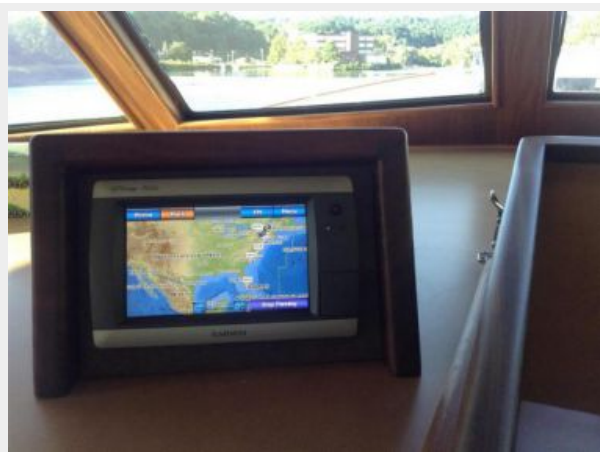
Pilothouse



Helm



Garmin GPS/Radar



Lower Helm Seat



Salon TV



Salon Looking Forward



Salon to Port



Dinette



Galley



Forward Cabin



Forward Head



Companionway



Companionway Laundry



Companionway Looking Forward



Mid Guest Cabin



Mid Guest Cabin Head



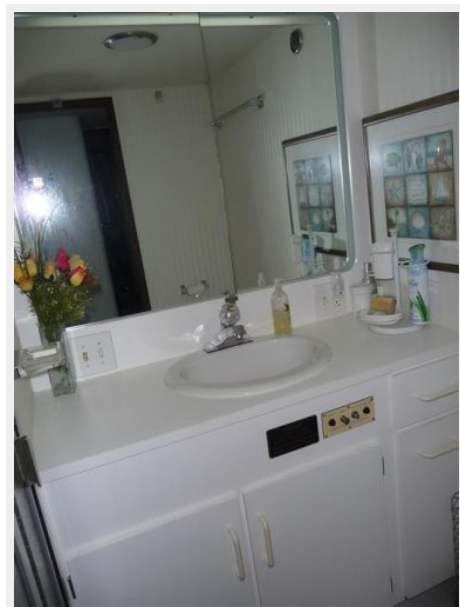
Master Cabin Looking Aft



Master Cabin to Port



Master Head



Master Cabin to Starboard



Foredeck



Aft Deck



Aft Deck Bar



Aft Deck Seating



Helm



Helm Chairs



Flybridge



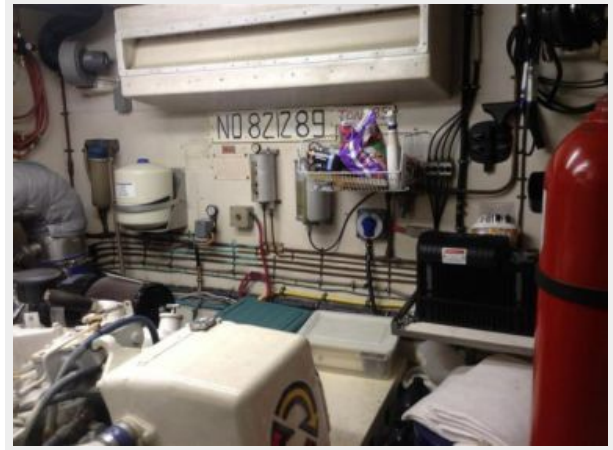
Starboard Engine



Port Engine



Port Engine Room



Gen/Room AC Units



Stern



Stabilizers



Bow Thruster



Stern



Alternate Profile



Alternate Profile



Alternate Profile



CONTACTS

Andrey Shestakov, leading yacht broker of the sales department of Atlantic Yacht and Ship Inc. Atlantic Yacht and Ship Inc., the official representative of the Miami/Fort Lauderdale FL headquarters.

Contact details

Email: info@atlanticyachtandship.ru

Web: www.atlanticyachtandship.ru/en/

Telephones

USA: +1 954 274-4435

RUS: +7 495 766-6268

Office hours

Monday – Saturday: **9:00 - 21:00** EDT

Sunday: **closed**

Address



Harbour Towne Marina, 850 NE 3rd St,
STE 213, Dania, FL 33004