



GRAFIN IV — PREMIER YACHTS



Builder: [PREMIER YACHTS](#)

Year Built: 1994

Model: Cutter

Price: ~~\$735,000 USD~~ Off the market

Location: United States

LOA: 54' 6" (16.61m)

Beam: 15' 0" (4.57m)

Min Draft: 7' 0" (2.13m)

Cruise Speed: 8 Kts. (9 MPH)

Our experienced yacht broker, Andrey Shestakov, will help you choose and buy a yacht that best suits your needs **GRAFIN IV — PREMIER YACHTS** from our catalogue. Presently, at Atlantic Yacht and Ship Inc., we have a wide variety of yachts available on our sale's list. We also work in close contact with all the big yacht manufacturers from all over the world.

If you would like to buy a yacht **GRAFIN IV — PREMIER YACHTS** or would like help answering any questions concerning purchasing, selling or chartering a yacht, please call **+1 954 274-4435**

TABLE OF CONTENTS

TABLE OF CONTENTS	2
SPECIFICATIONS	4
Overview	4
Basic Information	4
Dimensions	4
Speed, Capacities and Weight	4
Accommodations	5
Hull and Deck Information	5
Engine Information	5
DETAILED INFORMATION	6
Accommodations	6
Electronics	6
General Equipment	6
Safety	6
Machinery	7
Electric	7
Rigging	7
Sails	7
Winches	7
Remarks	7
PHOTOS	9
Brochure Photo	9
VIP Berth	9
VIP Head	9
Head Overview	9
Head	10
VIP Shower	10

Salon	10
Salon	10
Nav Table	11
Galley	11
Washer	11
Floor	11
Interior	12
Third Cabin	12
Head Two	13
Aft Cabin	13
Aft Cabin	13
Generator	13
Engine	14
Cockpit	14
Deck	15
Dinghy	15
Cowl	16
Mast	16
Stern	16
CONTACTS	17
Contact details	17
Telephones	17
Office hours	17
Address	17

SPECIFICATIONS

Overview

This yacht is in excellent condition and ready for cruising. The Nordseil is such a beautiful yacht and heads turn wherever she sails. Although her styling is from a period nearly fifty years ago she has like all of Bill Dixon's yachts considerable space below decks. Her sailing performance is excellent and she is the ocean cruiser for the discerning owners who like everything that was good about design in the "old days" but with every modern convenience built in. The yachtsmen or women looking for the unique mix of fast cruising and refined living all in a classic design and with Premier build quality need look no further! Boat International quoted: "For once the brochure comes close and the Nordseil is a gentlemen's yacht of extraordinary quality, construction and style."

Basic Information

Category: Cutter

Sub Category: Cruising Sailboat

Model Year: 1995

Year Built: 1994

Country: United States

Coast Guard #: Germany

Dimensions

LOA: 54' 6" (16.61m)

Beam: 15' 0" (4.57m)

Min Draft: 7' 0" (2.13m)

Speed, Capacities and Weight

Cruise Speed: 8 Kts. (9 MPH)

Displacement: 52910.94288 Pounds

Water Capacity: 300 Gallons

Holding Tank: 21 Gallons

Fuel Capacity: 180 Gallons

Accommodations

Total Cabins: 3

Hull and Deck Information

Hull Material: Steel

Deck Material: Teak

Hull Color: Navy Blue

Hull Designer: Bill Dixon

Engine Information

Engines: 1

Manufacturer: Yanmar

Fuel Type: Diesel

DETAILED INFORMATION

Accommodations

Grafin IV offers extremely comfortable accommodations for seven consisting of a large cabin aft with a double berth to port and sea berth to starboard just aft of the head area with new mattresses. The spacious galley area situated in the dog house is well ventilated and secure. She is fitted with a cooker, fridge and freezer, new Candy washer/dryer and a double stainless steel sink. She features a Wabasto warm water heater system with fans. To starboard and opposite of the galley is a complete navigation area with a full size chart table. There are three oblong opening ports either side at head height providing excellent ventilation for chef and navigator. Stepping down into the salon which is separated from the galley by partial bulkheads is the dining area with comfortable seating and a beautiful mahogany drop leaf table. Moving forward to port is a twin bunk cabin and opposite a second head area. Aft head compartment features a heated towel rail! A luxurious double guest (delete word guest) cabin is forward. The whole interior is solid mahogany and coated with a high gloss flawless varnish finish making a rich and cozy interior. No expense has been spared in the build and up keep of GRAFIN IV. She also has sensible and traditional features like a heated oil skin locker close to the companionway. All lighting has been changed to modern LED.

Electronics

Raymarine Auto pilot with Gyro compass, Raymarine ST 60 instruments with cruising pack 3 plus multi-function repeater at the chart table along with two more display units, Autohelm ST 50 Nav center, EPIRB, Raymarine radar, Icom SSB IC-800, New Icom 07323, Lanmar auto link controller, Chart plotter Raymarine C80. A 15, NASA weather Navtex, Tri color masthead LED navigation lights, Router for internal WIFI

General Equipment

Dinghy, Yamaha 3hp outboard with push pit stowage, Crane, Stainless steel Delta anchor 25 KG, Roena 40 KG, 70M chain and rope, Electric windlass, Stainless steel cowl vents, 8 cushions, Clock and barometer, 2 director stools, Cockpit table, Davits, Timage gang plank and boarding ladder, Radio and CD player, Switchable deck wash fresh and sea water with hose, 6 fans, Bimini-Spray hood, Deck chair for dining table, 6 electric Hella fans, Mattress of the highest quality which is made in Austria

Safety

6 man life raft, Electric bilge pump, Deck life lines, Jonboy.

Machinery

Yanmar 100 HP, 8 HP Celtic bow thruster, Maxprop, Rope cutter on shaft, pressurized hot and cold water, Wabasto warm water immersion heater

Electric

24 Volt two-wire negative earth system, 240 volt ring main with plugs in all cabins, Mobitronic battery controller, Zeisse 8 (6.5kw) generator, Battery charger, 110 volt inverter

Rigging

Cutter rig, Anodized and painted two spreader mast and boom by Proctor, Rod rigging, Spinnaker pole and gear, solid kicker, Hydraulic backstay adjuster, kicker and outhaul controls in cockpit, Head sail reefing, Stay sail reefing system

Sails

Fully battened main 646.7 sq. ft. 2008, Genoa 862.9 sq. ft. 2004, Staysail 225.6 sq. ft. 2004, Cruising chute with spee squeezer, All sails by CO-Segel, Gennacker2003

Winches

2 Lewmar 66ST electric primaries and main halyard winch in cockpit, 2 54ST, 1 48ST, 1 44ST, 1 electric 48ST on coach roof with Lewmar sheet stoppers

Remarks

This yacht is in excellent condition and ready for cruising. The Nordseil is such a beautiful yacht and heads turn wherever she sails. Although her styling is from a period nearly fifty years ago she has like all of Bill Dixon's yachts considerable space below decks. Her sailing performance is excellent and she is the ocean cruiser for the discerning owners who like everything that was good about design in the "old days" but with every modern convenience built in. The yachtsmen or women looking for the unique mix of fast cruising and refined living all in a classic design and

with Premier build quality need look no further! Boat International quoted: "For once the brochure comes close and the Nordseil is a gentlemen's yacht of extraordinary quality, construction and style. The yacht is amazingly quiet due to insulation in the hull to the waterline as well as the whole deck! The dodger is a true offshore design with room for a watch berth and a dry area in the foulest weather. The custom bimini is secure to the stanchions with solid stainless steel and an ergonomic design which is functional and stylish. Bill Dixon builds in high tensile 4mm steel with a superior fairing and paint. This makes Grafín IV a true offshore cruiser making her safe as well as a performing well. Dixon's brief was to design the definitive range of blue water cruising yachts and Dridge's job was to match the finish he once achieved at Bowman. The interior is all mahogany with quality joinery and a flawless finish. The bilges are clean and proper as a yacht should be. You will be hard pressed to find a safer and more comfortable yacht at this price point! Recent upgrades of at least \$25,000.00 are reflected in the listing. She will be shipping to Europe right after the show don't miss this opportunity to have a perfect yacht in your able hands!

PHOTOS

Brochure Photo



VIP Berth



VIP Head



Head Overview



Head



VIP Shower



Salon



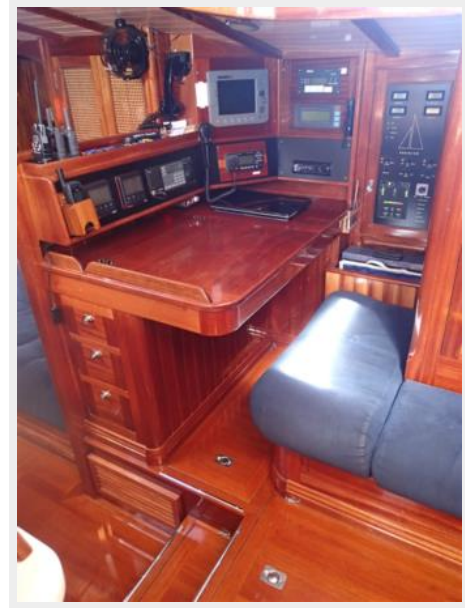
Salon



Galley



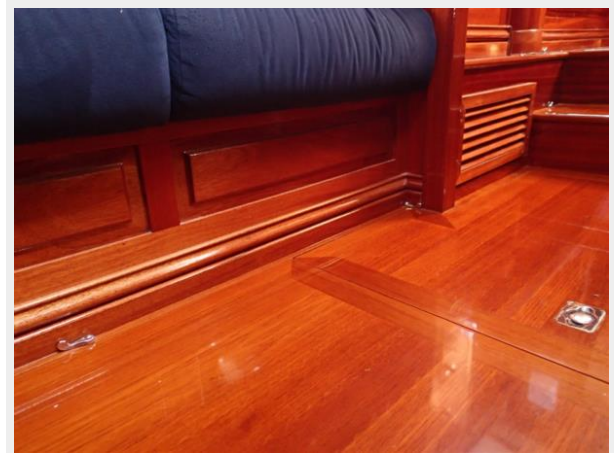
Nav Table



Washer



Floor



Interior



Third Cabin



Head Two



Aft Cabin



Aft Cabin



Generator



Engine



Cockpit



Deck



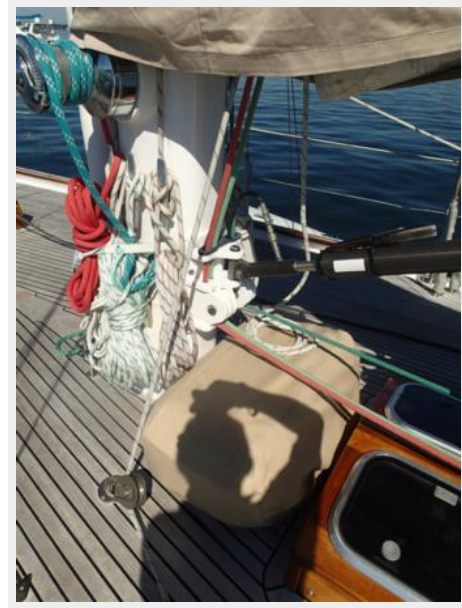
Dinghy



Cowl



Mast



Stern



CONTACTS

Andrey Shestakov, leading yacht broker of the sales department of Atlantic Yacht and Ship Inc. Atlantic Yacht and Ship Inc., the official representative of the Miami/Fort Lauderdale FL headquarters.

Contact details

Email: info@atlanticyachtandship.ru

Web: www.atlanticyachtandship.ru/en/

Telephones

USA: +1 954 274-4435

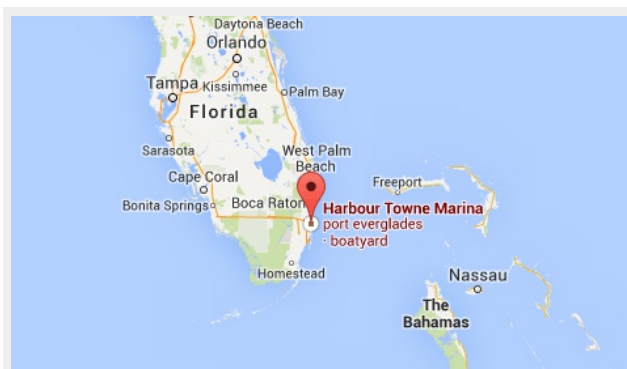
RUS: +7 495 766-6268

Office hours

Monday – Saturday: **9:00 - 21:00** EDT

Sunday: **closed**

Address



Harbour Towne Marina, 850 NE 3rd St,
STE 213, Dania, FL 33004