



WILDCAT II — OCEAN YACHTS



Судостроитель: [Ocean Yachts](#)

Год постройки: 1987

Модель: Моторная яхта

Цена: \$129,000 USD Продано

Местонахождение: United States

Длина общая: 48' 0" (14.63m)

Ширина: 15' 2" (4.62m)

Мин. осадка: 3' 6" (1.07m)

Крейс. скорость: 23 Kts. (26 MPH)

Макс. скорость: 26 Kts. (30 MPH)

Купить Wildcat II — Ocean Yachts а также выбрать подходящую вам яхту из нашего каталога яхт вам поможет опытный яхтенный брокер Андрей Шестаков. На сегодняшний день компания Atlantic Yacht and Ship Inc. имеет большое количество яхт в собственном списке продаж, а также тесно сотрудничает со всеми крупными яхтенными производителями по всему миру.

Для того чтобы купить яхту Wildcat II — Ocean Yachts а также проконсультироваться по любому вопросу связанному с покупкой, продажей, чартером яхт позвоните по телефону **8 800 234-4456** (бесплатно по РФ).

ОГЛАВЛЕНИЕ

ОГЛАВЛЕНИЕ	2
ХАРАКТЕРИСТИКИ	4
Обзор	4
Основная информация	4
Размеры	5
Скорость, вместимость и масса	5
Размещение	5
Корпус и палуба	5
Информация о двигателе	5
ПОДРОБНОЕ ОПИСАНИЕ	6
Vessel Walk-through	6
Fly Bridge	7
Deck & Hull	7
Mechanical & Electrical	7
Broker's Comments	8
Brokerage	9
Исключения	9
Отказ от ответственности	9
ФОТОГРАФИИ	10
Stb Qtr	10
Stb Bow	10
Bridge	10
Helm	10
Portside	10
Port Bow	10
Cockpit	11
Salon Aft	11
Salon Fwd	11

Salon Port	11
Salon Stb	11
Galley	11
Galley Above	12
Master	12
Master Head	12
Guest Cabin	12
Guest Head	13
Engine Room	13
КОНТАКТЫ	14
Контактная информация	14
Телефоны	14
Время работы	14
Адрес	14

ХАРАКТЕРИСТИКИ

Обзор

Major PRICE REDUCTION 7/23/2014! Call for more details!

Two stateroom model. Optional UPGRADE power option. Detroit Diesel 6V92's were just surveyed (April 2014) for the seller with strong results! See engine paragraph in Full Specs for details.

WILDCAT II is a very sweet 48 Ocean Super Sport that has essentially never been fished, but rather used on the Chesapeake as a family cruiser. Owner has not spared any expense on taking care of this very sweet boat!

Most of the teak has been "whited out" (Painted with white Awlgrip marine finish) , greatly modernizing her look.

Only 2 owners! She has spent a portion of her life under the protection of a shed. Her preferred two stateroom layout allows for generous accommodations and a proper full size galley that is still open to the salon. Exterior finish gleams! **New EZ2CY enclosure and cockpit cover.** Excellent soft goods throughout.

As mentioned above...**WILDCAT II** is powered with the larger **6V92 Detroit Diesels** instead of the smaller inline 671's. These optional engines allow the cruise speed to be maintained while running the engines under less load. Engines have been serviced by one of the best Detroit Mechanics on the East Coast.

This beautiful 48 Ocean Super Sport is very easy to see in downtown Annapolis, Just 25 minutes from BWI airport.

Please read on for full specs and photos.

Основная информация

Тип судна: Моторная яхта

Подкатегория: Convertible

Модельный год: 1987

Год постройки: 1987

Страна: United States

Открытая палуба мостика: Да

Размеры

Длина общая: 48' 0" (14.63m)

Ширина: 15' 2" (4.62m)

Мин. осадка: 3' 6" (1.07m)

Скорость, вместимость и масса

Крейс. скорость: 23 Kts. (26 MPH)

Крейсерская скорость поворота: 1975 Kts.

Макс. скорость: 26 Kts. (30 MPH)

Макс. скорость поворота: 2250 Kts.

Водоизмещение: 40000 Pounds

Вместимость воды: 150 Gallons

Объем топливного бака: 580 Gallons

Размещение

Всего кают: 2

Всего ком. состава: 2

Корпус и палуба

Материал корпуса: Fiberglass

Информация о двигателе

Производитель: Detroit Diesel

Модель: 6V92

Тип двигателя: Inboard

Тип топлива: Diesel

ПОДРОБНОЕ ОПИСАНИЕ

Vessel Walk-through

Stepping into the salon finds an L-shaped settee with a single hide-away bed is to port. A beautifully varnished hi-lo table with fold down leaves services this area as well as a teak end table with drawers and lamp.

Just forward is the wet-bar station with sink, ice maker and bar storage. Still forward is the full entertainment center with audio and video equipment.

To starboard are two very comfortable swiveling barrel chairs and a two stool breakfast bar that overlooks the galley. Mini blinds provide privacy. Very tasteful fabrics are used in the window treatments. A canvas runner from the cockpit door to the galley protects the fresh neutral berber carpet.

Forward and down four steps lands in the well appointed full galley. Lots of drawers and cabinets provides abundant storage. The separate washer and dryer are cleverly hidden in the galley area.

- Full size refrigerator/freezer (Kenmore)
- Dishwasher (Kenmore)
- Trash Compactor (Roper)
- 3 burner ceramic cooktop (Force 10)
- Sharp Carousel convection/microwave oven
- Single Basin stainless sink
- Instant hot water spigot
- Soap dispenser
- Full size Kenmore Washer
- Full size Kenmore Dryer
- Teak Parquet flooring
- Fresh Water level gauge

The Guest Cabin is located just to port of the galley and features two single bunks, a cedar lined hanging locker and plenty of storage in 3 cabinets, 8 drawers and a night stand. A TV is flush mounted in a cabinet overhead. An overhead deck prism allows natural light into this area. Private access to the guest head is available from this cabin. Varnished Teak and holly flooring. An ingenious folding enclosure keeps the guest head dry while showering.

Forward is the Owners Cabin with an Island berth. Port and starboard cedar-lined hanging lockers with louvered doors. Six cabinets and four drawers provide even more stowage. Overhead is a large deck hatch providing natural light and air. The master in-suite head features a teak and holly sole, also with a fold away stall shower enclosure. Both heads have deck hatches with Ocean Air privacy blinds and insect screens.

Fly Bridge

Flybridge features a factory hardtop and stainless supports. A new, beautifully done EZ2CY style (acrylic) full enclosure with an additional Stamoid aft drop which can be folded up and stowed in minutes. Cushions are very fresh and in nice condition as well. Three ladder back pedestal chairs along with two bench seats can accommodate a small crowd.

- Northstar 951X GPS plotter
- Furuno M851 48 mile radar
- Datamarine International depth and Navigator speedo
- Datamarine LX 300 depth
- Azimuth 1000 digital compass by KVH
- ICOM VHF IC-M602 marine radio
- Dytek temperature
- Hatch in Hardtop for ventilation and H/T access
- Morse controls
- VDO gauges
- Teak rod racks under starboard side bench seating
- Teak rod racks under center bench seat as well
- Additional storage located under bridge brow.

Deck & Hull

Cockpit teak is protected with an easy to maintain and non slippery C-tol finish. A brand new (2013) canvas cockpit cover is installed. The typical natural teak window frames have been "whited out" with Awlgrip marine paint, making an easier maintained, more modern boat. White Star-board ladder treads replace the original teak doing the same. A very large fish locker/live-well under the deck provides massive fender storage for a non-fished boat. A top loading fridge/freezer located under the bridge ladder is used for beverages.

- Large Transom door
- Wash-downs
- Glendinning 50 amp Cable-master shore cord retractor
- Double spreader outriggers and center rigger.
- Stainless railings
- Hardtop with stainless supports
- Ideal electric windlass with deck switches and bridge remote
- Fortress FX37 anchor

Mechanical & Electrical

6V92 Detroit Diesels!

Engine access is conveniently accessed through a hinged hatch in the saloon floor. engine room is well lit with both ac and dc lighting. Owner has maintained a proper ship's log with service records and fuel burn with every fuel fill. Owner cruises at 1975 rpms, 22-23 knots burning approximately 27-28 GPH total!

Starboard engine was totally rebuilt about 800 hours ago due to an internal failure on a delivery. Port engine has about 2800 hours. Both engines have been very well maintained by one of the best Detroit mechanics on the east coast.

A full engine survey was performed in the spring of 2014 for the owner. Detroit Diesel specs say that cylinder compression of 500 psi is "new" while their recommended minimum is 450 psi. Starboard engine showed 490-495psi while the port was 470-475psi. In theory, it would not be unreasonable to think the port engine could still have 2000 hours of life in her before a rebuild would be considered. Since Wildcat II has been averaging about 164 hours per year, that could mean 12 years if similar maintenance and cruising habits were followed.

- Optional twin **550 hp 6V92 Detroit Diesels.**
- Walker AirSeps on both main engines
- Silicone hoses
- Engine water/block heaters
- Glendinning engine synchronizer
- Oil changing system
- Westerbeke generator - 11 kW with 3600 hours
- 50 amp shore service with Cable Master retractor system
- Fuel transfer pump
- Fire Boy fire suppression system
- 40 amp TrueCharge multi-stage battery charger
- Racor 1000FG fuel water separators
- Blowers x2
- Engine room heaters w/ thermostat
- Fresh water engine room wash-down
- Coastal Climate Control air-conditioners x2 zones
- New compressor for air horns

Broker's Comments

Two stateroom model. Optional UPGRADE power option. Detroit Diesel 6V92's were just surveyed (April 2014) for the seller with strong results!

WILDCAT II is a very sweet 48 Ocean Super Sport that has essentially never been fished, but rather used on the upper Chesapeake Bay as a family cruiser. Owner has not spared any expense on taking care of this very sweet boat!

Most of the teak has been "whited out" (Painted with white Awlgrip marine finish) , greatly

modernizing her look.

Only 2 owners! She has spent a portion of her life under the protection of a shed. Her preferred two stateroom layout allows for generous accommodations and a proper full size galley that is still open to the salon. Exterior finish gleams! Cockpit teak and coaming boards are in wonderful condition! **New EZ2CY enclosure and cockpit cover.** Excellent soft goods throughout.

As mentioned above...**WILDCAT II** is powered with the larger **6V92 Detroit Diesels** instead of the smaller inline 671's. These optional engines allow the cruise speed to be maintained while running the engines under less load. Engines have been serviced by one of the best Detroit Mechanics on the East Coast.

This beautiful 48 Ocean Super Sport is very easy to see in downtown Annapolis, Just 25 minutes from BWI airport.

Brokerage

Please Read: The Company offers the details of this vessel in good faith but cannot guarantee or warrant the accuracy of this information nor warrant the condition of the vessel. A buyer should instruct his agents, or his surveyors, to investigate such details as the buyer desires validated. This vessel is offered subject to prior sale, price change, or withdrawal without notice.

Исключения

При продаже яхты исключаются личные вещи владельца, личное оборудование, включая список предметов личного пользования владельца яхты, но не ограничиваясь гидроциклами, катерами, сибоб, снаряжением для рыбалки и дайвинга если таковые имеются на момент заключения сделки.

Отказ от ответственности

Компания предоставляет описание судна или яхты добросовестно, но не может гарантировать точность этой информации, а также не ручается за техническое состояние. Покупатель должен проинструктировать своих агентов или оценщиков исследовать представленную информацию более подробно, по собственному желанию. Продажа судна или яхты, изменение цены или снятие с продажи будет происходить без предварительного уведомления.

ФОТОГРАФИИ

Stb Qtr



Stb Bow



Bridge



Helm



Portside



Port Bow



Cockpit



Salon Aft



Salon Fwd



Salon Port



Salon Stb



Galley



Galley Above



Master



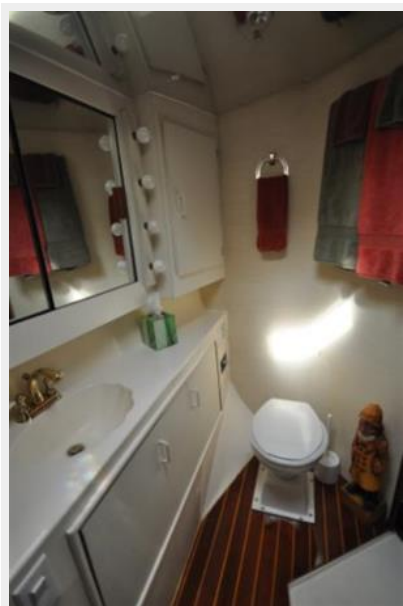
Master Head



Guest Cabin



Guest Head



Engine Room



КОНТАКТЫ

Андрей Шестаков (Andrey Shestakov) – ведущий яхтенный брокер отдела продаж яхт и судов компании Atlantic Yacht and Ship Inc. Официальный представитель Atlantic Yacht and Ship Inc. для русскоговорящих клиентов в центральном офисе компании в Майами/Форт Лодердейл/Флорида/США.

Контактная информация

Email: info@atlanticyachtandship.ru

Web: www.atlanticyachtandship.ru

Телефоны

Бесплатный звонок по России: **8 800 234-4456**

Москва и Московская область: **+7 495 766-6268**

Краснодарский край: **+7 918 465-6644**

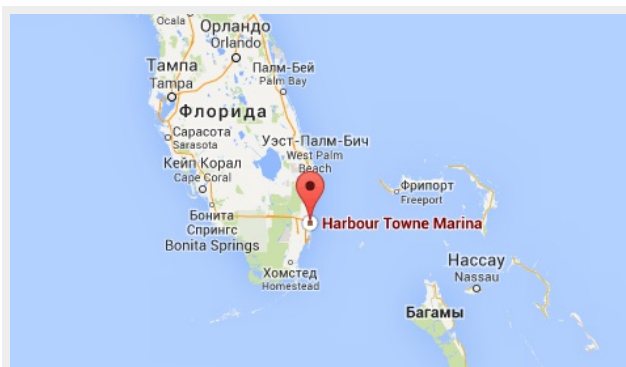
США, Майами, Флорида: **+1 954 274-4435**

Время работы

Понедельник – Суббота: **9:00 - 21:00**
EDT

Воскресенье: **Закрито**

Адрес



Harbour Towne Marina, 850 NE 3rd St,
STE 213, Dania, FL 33004