



WHITE SEAHORSE — TRADEWINDS



Судостроитель: TRADEWINDS

Год постройки: 1988

Модель: Моторная яхта

Цена: \$124,900 USD Продано

Местонахождение: United States

Длина общая: 47' 0" (14.33m)

Ширина: 14' 11" (4.55m)

Макс. осадка: 3' 6" (1.07m)

Крейс. скорость: 15 Kts. (17 MPH)

Макс. скорость: 18 Kts. (21 MPH)

Купить **WHITE SEAHORSE — TRADEWINDS** а также выбрать подходящую вам яхту из нашего каталога яхт вам поможет опытный яхтенный брокер Андрей Шестаков. На сегодняшний день компания **Atlantic Yacht and Ship Inc.** имеет большое количество яхт в собственном списке продаж, а также тесно сотрудничает со всеми крупными яхтенными производителями по всему миру.

Для того чтобы купить яхту **WHITE SEAHORSE — TRADEWINDS** а также проконсультироваться по любому вопросу связанному с покупкой, продажей, чартером яхт позвоните по телефону **8 800 234-4456** (бесплатно по РФ).

ОГЛАВЛЕНИЕ

ОГЛАВЛЕНИЕ	2
ХАРАКТЕРИСТИКИ	5
Обзор	5
Основная информация	5
Размеры	5
Скорость, вместимость и масса	6
Размещение	6
Корпус и палуба	6
Информация о двигателе	6
ПОДРОБНОЕ ОПИСАНИЕ	7
Interior / Layout	7
Salon	7
Galley	7
Lower Helm	8
Sundeck	8
Fly Bridge	8
Electronics & Navigation	9
Deck & Hull	10
Engine Room & Mechanical	10
Electrical	11
Builder	11
Broker's Comments	11
Brokerage	11
Исключения	12
Отказ от ответственности	12
ФОТОГРАФИИ	13
Port Qtr	13
Salon Fwd	13

Salon Stb	13
Salon Aft	13
King Size	13
Aft Stateroom	13
VIP Cabin	14
Lower Helm	14
Dinnette	15
Galley	15
Galley Aft	15
Aft Deck	15
Aft Deck Ice maker	15
Aft Deck Fwd	15
Washer	16
Sundeck Hardtop	16
Bridge Fwd	16
Bridge Northstar	16
Bridge Helm Detail	16
Bridge aft	16
Teak framed glass door	17
Bow detail	17
Bow	17
Electrical Panel	17
Generator	17
ENgine Room	17
Port Engine	18
Stb Engine	18
Lehmans	18
Ford Lehmans	18
Marine Trading	18

КОНТАКТЫ	19
-----	-----
Контактная информация	19
-----	-----
Телефоны	19
-----	-----
Время работы	19
-----	-----
Адрес	19
-----	-----

ХАРАКТЕРИСТИКИ

Обзор

Major Price Reduction! Two Boat Owner wants her sold!

WHITE SEAHORSE could possibly be the nicest 47' Tradewinds Sundeck Motor Yacht on the market. She kept most of her life, it is easy to see that this boat has been loved by her two owners!

Upper and lower helms allows protection and comfort in any weather. Twin Ford Lehman Diesels provide reliable and efficient power. Featuring the preferred two stateroom layout with a **King** size bed aft in the Owner's cabin. The forward cabin is a true VIP cabin featuring a **Queen** size berth and private access to the forward head. Galley and Dinette are down but open to salon from above. Salon is bright and airy. Teak parquet flooring in great shape.

Great electronics (Recent Simnet integrated chart plotters, radar and autopilot), generator, new Prosine inverter\smart charger, reverse cycle air conditioning. Sundeck is protected by a hardtop with an **EZ2CY** full enclosure with fresh canvas on the bridge ('09).

Read on for full details...

Основная информация

Тип судна: Моторная яхта

Подкатегория: Aft Cabin

Модельный год: 1988

Год постройки: 1988

Страна: United States

Открытая палуба мостика: Да

Размеры

Длина общая: 47' 0" (14.33m)

Ширина: 14' 11" (4.55m)

Макс. осадка: 3' 6" (1.07m)

Скорость, вместимость и масса

Крейс. скорость: 15 Kts. (17 MPH)

Макс. скорость: 18 Kts. (21 MPH)

Водоизмещение: 30500 Pounds

Вместимость воды: 320 Gallons

Объем топливного бака: 500 Gallons

Размещение

Всего кают: 2

Всего ком. состава: 2

Корпус и палуба

Материал корпуса: Fiberglass

Информация о двигателе

Производитель: Lehman

Модель: SP 275

Тип двигателя: Inboard

Тип топлива: Diesel

ПОДРОБНОЕ ОПИСАНИЕ

Interior / Layout

White Seahorse features the two cabin layout...Aft Master and Forward VIP staterooms. The Master has a huge island **King**-size berth, three hanging lockers, and plenty of drawer storage. The master cabin has its own head with updated fresh water Vacu-flush heads, and generous stall shower with a crafted teak framed glass enclosure.. Moving forward and a few steps up is the Salon. The salon has a new sleeper couch as well as a teak armchair and teak side table. Beautiful teak parquet flooring. Cabinet doors are crafted of quality teak lattice

The lower helm is forward with side-deck access via a starboard sliding door. A few steps down is the galley area. A roomy convertible dinette is to port while the full size galley is to starboard. Forward is the **VIP Guest Stateroom** with a full size island **Queen** berth, private access to the forward head, hanging lockers and plenty of storage and natural light via hatches and oval ports.

Salon

The Salon on WHITE SEAHORSE is huge! The teak parquet flooring throughout looks great. Lots of natural light and air. Starboard aft are crafted teak cabinets that house the entertainment equipment as well as additional storage area. Steps lead aft to the master stateroom while to port a set of stairs lead to the sundeck. The 32"LCD thin screen HDTV is situated forward to port.

- Sleeper sofa with Sealy Posture Poise Mattress
- Teak armchair
- Teak Side-table with lamp
- 32" LCD HDTV Sony
- Sony Stereo
- Sony CD/MP3
- Sony DVD player
- HD360 TV antenna with Rotor and remote control
- Niles 6 Station speaker selector
- Independent speaker volume controls
- 5 Station Intercom
- Overhead teak grab rails

Galley

Very well appointed Galley to starboard with Roomy Dinette to port. Gorgeous teak cabinetry provides more than adequate storage and pantry space.

- Refrigerator / Freezer - Norcold

- 3 Burner stove with oven- Princess SeaWard
- Double basin stainless sink
- Microwave - GE
- Dinette seats 4 comfortably and converts to berth

Lower Helm

The lower helm is located in the forward starboard portion of the salon and is serviced by a sidedeck door. All electronics are within easy reach.

- Northstar 6100i 12' Chart plotter all-in-one w/ 4kW Radar
- Simrad AP28 autopilot
- Icom M502 VHF
- Computank digital tank monitor
- Tankwatch indicator
- Jabsco searchlight remote
- Morse engine controls
- Hynautic steering
- Ritchie compass
- Datamarine depth and speed instruments
- Bennett trim tabs with controls
- Vetus windshield wipers - x3

Sundeck

The AFT DECK or SUNDECK is a wonderful area that is protected by an EZ2CY stiff acrylic enclosure and Hardtop. Teak framed glass wing doors and bridge door keep the elements at bay. The teak sole is in excellent condition because of this protection.

A round table with 4 cushioned armchairs services this area. Forward is a wetbar sink, bottle and glass storage, washer/dryer combo unit and Icemaker.

- Raritan Icemaker
- Norcold Washer and Dryer
- Overhead light
- overhead speakers
- Stainless hanging line holders
- Ladder to swim platform

Fly Bridge

Just 3 steps up from the sundeck and through a teak framed glass door, is the upper helm or flybridge. Protected by a bimini top and complete removable enclosure, the bridge has great 360 visibility. Full duplicate electronics. Folding radar arch. comfortable captains seat . Port and starboard L-shaped bench seats with cushions and with storage under provide seating for a small crowd.

- Sunbrella windshield cover
- Newer flybridge cushions
- Full flybridge enclosure – new in 2009
- Radar arch lighting

Electronics & Navigation

LOWER HELM:

- Northstar 6100i 12' all-in-one plotter, radar, sounder
- Northstar 4k digital color radar
- Simrad AP 28 autopilot
- Data Marine depth and speedo
- ICOM IC-M100 VHF marine radio
- Jabsco remote spotlight
- Tank watch - holding tank alert system
- Computank - tank monitoring system
- Prosine 2.0 2000 watt inverter/smart charger remote
- vessel pump monitoring display
- electrical panel within reach of helm for instant access
- Fireboy halon fire suppression system manual operation handle
- Morse engine controls
- triple independent windshield wipers - Vetus
- intercom - 5 station
- a/c power volt and amp meters
- Hynautic steering with stainless ship's wheel
- smoke detector
- stb sliding door to side deck

UPPER HELM "BRIDGE":

- Northstar 6100 8.5" chart-plotter
- Northstar 4kw digital color radar
- Simrad AP28 autopilot
- Computank digital tank monitor
- Jabsco searchlight with helm and bridge controls

- Morse engine controls
- Hynautic steering
- Ritchie compass
- Datamarine depth and speed instruments
- Bennett trim tabs with controls
- Radar arch lighting
- Newer flybridge cushions
- Full flybridge enclosure -'09

Deck & Hull

This is the newer version of the 47' models, riding on a faster, modified-V bottom with a sharper entry and more transom deadrise than the older models.

Fully EZ2CY enclosed sundeck with custom canvas closing off hawser openings. Sundeck has teak decking in perfect condition. No exterior teak!

- Shakespeare antennas '04
- Anchor windlass '03
- EZ2CY aft enclosure
- Screens fitted into side curtains
- windshield sunscreen
- Swim platform
- Edson Davit system
- Vetus windshield wipers - x3

Engine Room & Mechanical

- Twin Ford Lehman 275 turbo diesels – approx. 3170 hrs total time on both engines.
- Approx 500 hrs since STB engine rebuild
- Spare 24 X 24 props recently tuned
- Onan 8 kw genset with soundshield and remote panel at helm
- Oil change system - X-Chang-er brand
- 8-D batteries (2 new in 2012, 1 new in 2013)
- Glendinning Synchronizer
- Walker Airseps
- Walker Fuelseps
- Computank:tank monitoring system
- Allison Transmissions
- Xantrex Prosine 2.0 inverter & smart charger

- ProMariner galvanic isolator
- Three station reverse air – 2 newer Cruisair and 1 Lunaire – Costal Climate control
- Vacu-flush heads (x2)
- Fire Boy 1301 Halon fire suppression system - model 150MA
- Bilgebusters (2)

Electrical

Under helm wiring is neat and tidy, very well done, with great access for trouble shooting or adding additional equipment.

- 8 kw Onan w/ sound shield
- 30amp shore service x2
- 8D 12 volt batteries (new in 2013 and 2014)
- Prosine 2000 watt Inverter/charger

Builder

Built in the highly respected Lien Hwa Yard in Taiwan...known for their high quality builds and used by other top end builders such as Ted Hood for their line of Little Harbor Yachts.

Broker's Comments

WHITE SEAHORSE could possibly be the nicest 47' Tradewinds Sundeck Motor Yacht on the market. Shed kept most of her life, it is easy to see that this boat has been loved by her two owners!

Upper and lower helms allows protection and comfort in any weather. Twin Ford Lehman Diesels provide reliable and efficient power. Featuring the preferred two stateroom layout with a **King** size bed aft in the Owner's cabin. The forward cabin is a true VIP cabin featuring a **Queen** size berth and private access to the forward head. Galley and Dinette are down but open to salon from above. Salon is bright and airy. Teak parquet flooring in great shape.

Great electronics (Recent Simnet integrated chart plotters, radar and autopilot), generator, new Prosine inverter\smart charger, reverse cycle air conditioning. Sundeck is protected by a hardtop with an **EZ2CY** full enclosure with fresh canvas on the bridge ('09).

Brokerage

Please Read: The Company offers the details of this vessel in good faith but cannot guarantee or warrant the accuracy of this information nor warrant the condition of the vessel. A buyer should instruct his agents, or his surveyors, to investigate such details as the buyer desires validated. This vessel is offered subject to prior sale, price change, or withdrawal without notice.

Исключения

При продаже яхты исключаются личные вещи владельца, личное оборудование, включая список предметов личного пользования владельца яхты, но не ограничиваясь гидроциклами, катерами, сибоб, снаряжением для рыбалки и дайвинга если таковые имеются на момент заключения сделки.

Отказ от ответственности

Компания предоставляет описание судна или яхты добросовестно, но не может гарантировать точность этой информации, а также не ручается за техническое состояние. Покупатель должен проинструктировать своих агентов или оценщиков исследовать представленную информацию более подробно, по собственному желанию. Продажа судна или яхты, изменение цены или снятие с продажи будет происходить без предварительного уведомления.

ФОТОГРАФИИ

Port Qtr



Salon Fwd



Salon Stb



Salon Aft

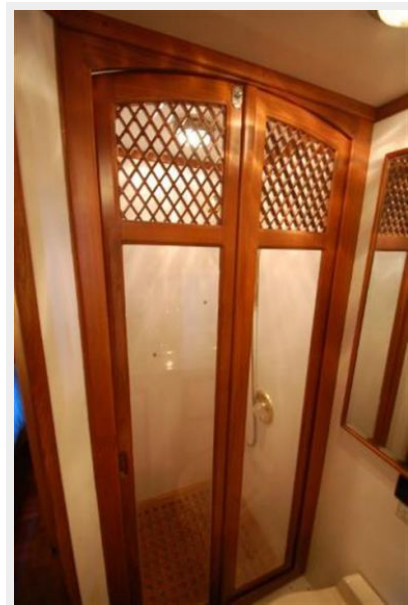


King Size



Aft Stateroom





VIP Cabin



Lower Helm



Dinette



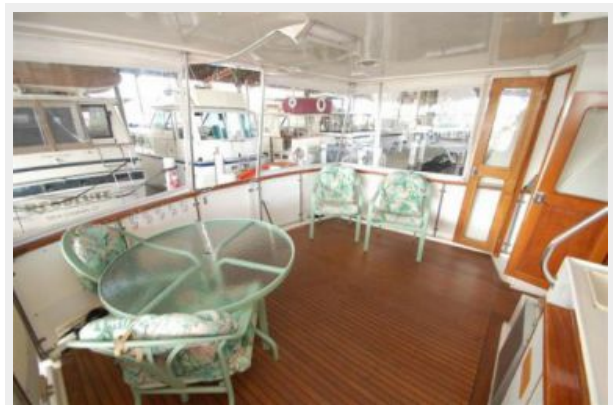
Galley



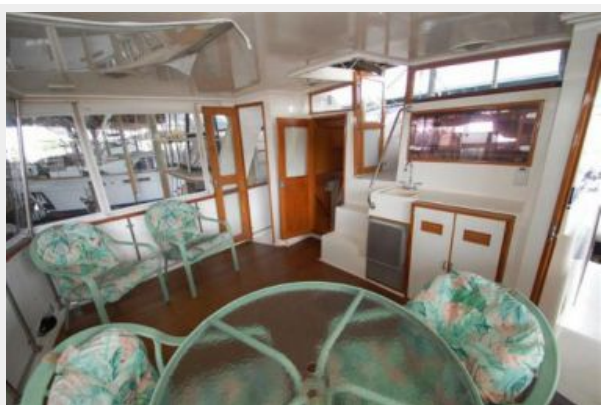
Galley Aft



Aft Deck



Aft Deck Fwd



Aft Deck Icemaker



Washer



Sundeck Hardtop



Bridge Fwd



Bridge Northstar



Bridge Helm Detail



Bridge aft



Teak framed glass door



Bow detail



Bow



Electrical Panel



ENgine Room



Generator



Port Engine



Stb Engine



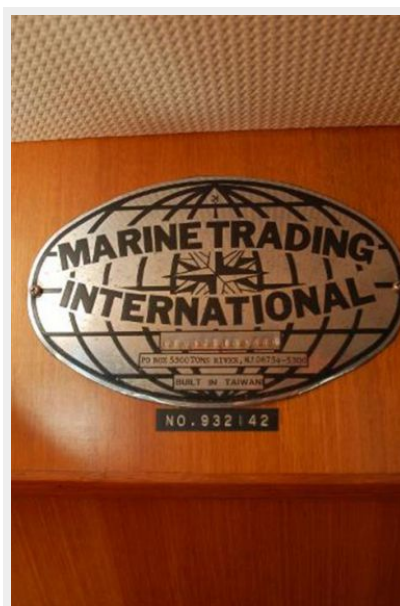
Lehmans



Ford Lehmans



Marine Trading



КОНТАКТЫ

Андрей Шестаков (Andrey Shestakov) – ведущий яхтенный брокер отдела продаж яхт и судов компании Atlantic Yacht and Ship Inc. Официальный представитель Atlantic Yacht and Ship Inc. для русскоговорящих клиентов в центральном офисе компании в Майами/Форт Лодердейл/Флорида/США.

Контактная информация

Email: info@atlanticyachtandship.ru

Web: www.atlanticyachtandship.ru

Телефоны

Бесплатный звонок по России: **8 800 234-4456**

Москва и Московская область: **+7 495 766-6268**

Краснодарский край: **+7 918 465-6644**

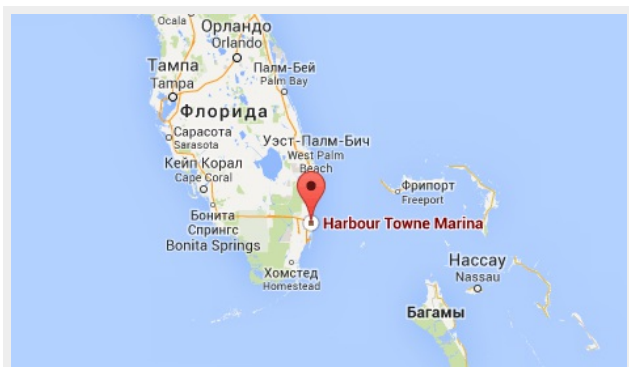
США, Майами, Флорида: **+1 954 274-4435**

Время работы

Понедельник – Суббота: **9:00 - 21:00**
EDT

Воскресенье: **Закрито**

Адрес



Harbour Towne Marina, 850 NE 3rd St,
STE 213, Dania, FL 33004