



VOYAGER — ASTILLEROS Y TALLERES CELAYA SA



Builder:

ASTILLEROS Y TALLERES CELAYA SA

Year Built: 1973

Model: Mega Yacht

Price: ~~Price On Application~~ **Off the market**

Location: Monaco

LOA: 201' 0" (61.26m)

Beam: 31' 0" (9.45m)

Min Draft: 12' 7" (3.81m)

Cruise Speed: 12 Kts. (14 MPH)

Max Speed: 16 Kts. (18 MPH)

Our experienced yacht broker, Andrey Shestakov, will help you choose and buy a yacht that best suits your needs **VOYAGER — ASTILLEROS Y TALLERES CELAYA SA** from our catalogue. Presently, at Atlantic Yacht and Ship Inc., we have a wide variety of yachts available on our sale's list. We also work in close contact with all the big yacht manufacturers from all over the world.

If you would like to buy a yacht **VOYAGER — ASTILLEROS Y TALLERES CELAYA SA** or would like help answering any questions concerning purchasing, selling or chartering a yacht, please call **+1 954 274-4435**

TABLE OF CONTENTS

TABLE OF CONTENTS	2
SPECIFICATIONS	4
Overview	4
Basic Information	4
Dimensions	4
Speed, Capacities and Weight	4
Accommodations	4
Hull and Deck Information	5
Engine Information	5
DETAILED INFORMATION	6
Dimensions	6
Construction	6
Classification	6
Performance	6
Machinery	6
Steering & Propulsion	7
Auxiliary Equipment	7
Tankage	7
Electrical System	7
Navigation Equipment	7
Communication and Satellite Equipment	8
Domestic Appliances	8
Tender and Toys	8
Safety and Security	9
Exclusions	9
Disclaimer	9
PHOTOS	10
Interior dining	10

Bar	10
Owner's bathroom	10
Owner's Suite	10
VIP stateroom	11
VIP bathrrom	11
Double Cabin	11
Double Cabin	11
Exterior dining	11
CONTACTS	12
Contact details	12
Telephones	12
Office hours	12
Address	12

SPECIFICATIONS

Overview

Extensive refit finished in June 2015 - Please enquire for more information

Basic Information

Category: Mega Yacht

Model Year: 2012

Year Built: 1973

Refit Year: 2012

Refit Type: Extensive Refit Finished in Junr
2015 - Please enquire for more information

Country: Monaco

Helipad: Yes

Dimensions

LOA: 201' 0" (61.26m)

Beam: 31' 0" (9.45m)

Min Draft: 12' 7" (3.81m)

Speed, Capacities and Weight

Cruise Speed: 12 Kts. (14 MPH)

Max Speed: 16 Kts. (18 MPH)

Displacement: 1818813.6615 Pounds

Gross Tonnage: 780 Pounds

Fuel Capacity: 26298.3277766 Gallons

Fuel Consumption: 64.72215274 Gallons

Accommodations

Total Cabins: 9

Sleeps: 12

Captain Cabin: True

Hull and Deck Information

Hull Material: Steel

Hull Configuration: Full Displacement

Engine Information

Engines: 2

Manufacturer: Caterpillar

Model: D399

Fuel Type: Diesel

DETAILED INFORMATION

Dimensions

EXTENSIVE REFIT FINISHED IN JULY 2015 - Please enquire for information

Length o.a 61.26 m / 201'0"

Beam 9.45 m / 31'0"

Draft 3.81m / 12'6"

Displacement 825 tons

Gross tonnage 780 tons

Net tonnage 234 tons

Construction

Hull	Steel
Superstructure	Aluminium
Decks	Teak
Naval Architect	Sparkman & Stephens
External Designer	Sparkman & Stephens
Internal Designer	Civitella Designs

Classification

Class	IRS Commercial
MCA	No
Other	ISM and SOLAS compliant 12 passenger

Performance

Maximum speed	16 knots
Minimum speed	12 knots
Consumption	245 l ph @ 11 knots

Machinery

Engines	2 x 1.125 hp D399 Caterpillar Diesel
Engine hours	TBC

Generators	2 x 275 kva D343 Caterpillar auxiliary 440 V AC 60 Hz
Generator hours	TBC

Steering & Propulsion

Propellers	2 x steel propeller shafts in cooper split roller bearings 2 x 3 -blade bronze fixed pitch propellers
Gearbox	3.5:1 reserve reduction gear boxes

Auxiliary Equipment

Bow thruster	160 hp PLUEGER
Water maker	Sea Recovery SRC 13M3 - SW
Stabilizers	
Oily water seperator	Heli sep 500 15 ppm

Tankage

Fuel	99.550 l
Lubrication oil	1.640 l
Dirty lub oil	1.000 l
Fresh water	36.938 l
Grey water	10.340 l
Black water	2.000 l
Heli Jet Fuel	10.800 l

Electrical System

Voltage	220/110 V
Frequency	60 Hz
Shore power converter	440 V 3 phase 60 Hz 150 amp
Batteries	12 x 6 V/Ah gel cell

Navigation Equipment

Magnetic Compass	Lilley & Gillie SCH 40
Gyro Compass	Yokogowa CMZ 300
Echo Sounder	Furno FE 700 (IMO) Furno color video sounder
Autopilot	C Plath Navpilot 4000
Radar	JRC JMA 391 / Furno FR 2115
GPS	Furno GP 90 IMO GPS

Communication and Satelite Equipment

Inmarsat	NERA SATURN B inmarsat B satcom
Navtex	JRC NCR 300A
VHF	FURNO FM 8500 c/w DSC
Telephone exchange	Seatel Wavecall Global Star Satellite telephone
VHF hand held radio	GMDSS / ACR 2726
Printer / Fax	SAMSUNG ML 1740 / PANASONIC KX - FHD 332

Domestic Appliances

Refrigrator	2 x TRUE T - 23
Freezer	1 x TRUE TUC - 27 F
Oven	1 x Garland convection MCO E 5/25
Icemaker	Hoshizak KM 250 BAE cubes
Dishwasher	1 x Hobart ML27873
Washing Machine	4 x Asco W 6021
Dryer	4 x Asco T711

Tender and Toys

Tenders	1 x 17 ' inflatable Polaris w /75hp Mercury engine
	1 x 17 ' inflatable Novurania w/ 115 hp Yamaha engine
	2 x Sea Doo 3 person wave runners
	1 x wake board
	10 kayaks 6 single and 4 doble
	1 pair water skis including slalom
	4 x fishing rods and assorted tackle
	1 x banana boat
	1 x inflatable mattress

Safety and Security

EPIRB	ACR 2576
Life Rafts	4 x emergency rafts
Ship alarms	Notifier AFP - 200
Bilge & Fire pumps	Main pump - Bell & Gossitt with baldor motor 1 x Teel self prime emergency bilge pump baldor motor 1 x Integrated Westinghouse / ITUR bilge pump baldor motor
Searchlight	ACR 600 ZENON remote controlled and focusable
Security Cameras	16 cameras through the ship

Exclusions

Owner's personal belongings. Owner's personal toys, including but not limited Jet-skis, Tenders, Sea Bobs, Fishing & Diving equipment.

Disclaimer

The Company offers the details of this vessel or yacht in good faith but cannot guarantee or warrant the accuracy of this information nor warrant the condition of the vessel. A buyer should instruct his representatives, agents, or his surveyors, to investigate such details as the buyer desires validated. This vessel or yacht is offered subject to prior sale, price change, or withdrawal without notice.

PHOTOS



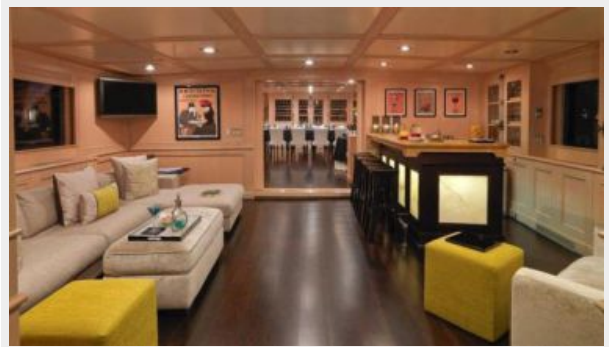
Interior dining



Owner's Suite



Bar



Owner's bathroom



VIP stateroom



VIP bathrrom



Double Cabin



Double Cabin



Exterior dining



CONTACTS

Andrey Shestakov, leading yacht broker of the sales department of Atlantic Yacht and Ship Inc. Atlantic Yacht and Ship Inc., the official representative of the Miami/Fort Lauderdale FL headquarters.

Contact details

Email: info@atlanticyachtandship.ru

Web: www.atlanticyachtandship.ru/en/

Telephones

USA: +1 954 274-4435

RUS: +7 495 766-6268

Office hours

Monday – Saturday: **9:00 - 21:00** EDT

Sunday: **closed**

Address



Harbour Towne Marina, 850 NE 3rd St,
STE 213, Dania, FL 33004