



## MISS FORTUNE (TRADE-IN) — SABRE YACHTS



**Builder:** [SABRE YACHTS](#)

**Year Built:** 2014

**Model:** Cruiser

**Price:** ~~\$699,000 USD~~ Off the market

**Location:** United States

**LOA:** 42' 0" (12.80m)

**Beam:** 14' 0" (4.27m)

**Min Draft:** 3' 4" (1.02m)

**Cruise Speed:** 26 Kts. (30 MPH)

**Max Speed:** 30 Kts. (35 MPH)

Our experienced yacht broker, Andrey Shestakov, will help you choose and buy a yacht that best suits your needs **Miss Fortune (Trade-In) — SABRE YACHTS** from our catalogue. Presently, at Atlantic Yacht and Ship Inc., we have a wide variety of yachts available on our sale's list. We also work in close contact with all the big yacht manufacturers from all over the world.

If you would like to buy a yacht **Miss Fortune (Trade-In) — SABRE YACHTS** or would like help answering any questions concerning purchasing, selling or chartering a yacht, please call **+1 954 274-4435**

# TABLE OF CONTENTS

TABLE OF CONTENTS	2
SPECIFICATIONS	4
Basic Information	4
Dimensions	4
Speed, Capacities and Weight	4
Accommodations	4
Hull and Deck Information	5
Engine Information	5
DETAILED INFORMATION	6
Hull	6
Deck & Hardware	6
Deck Hardware	6
Stateroom, Forward	7
Stateroom, Second	7
Head	8
Galley	8
Helm Station & Salon	8
Propulsion	9
Fuel System	9
Steering and Trim Systems	9
Electronics	9
12VDC Electrical System	10
12VAC Electrical System	10
Cockpit	11
Decor	11
Fresh Water System	11
Waste Disposal	11

Additional Equipment	12
Additional Information	14
PHOTOS	15
Bow	15
Transom	15
Transom	15
Helm	15
Helm	15
Galley	15
Salon	16
Salon	16
Dinette / 2nd Stateroom	16
Salon	16
Dinette / 2nd Stateroom	16
Master Stateroom	16
Master Stateroom	17
Head	17
Head	17
Cockpit Seating	17
Cockpit Seating	18
Cockpit Table	18
Cockpit Table	18
CONTACTS	19
Contact details	19
Telephones	19
Office hours	19
Address	19

---

# SPECIFICATIONS

---

## Basic Information

---

<b>Category:</b> Cruiser	<b>Sub Category:</b> Downeast
<b>Model Year:</b> 2014	<b>Year Built:</b> 2014
<b>Country:</b> United States	<b>Vessel Top:</b> 2363
<b>Fly Bridge:</b> No	<b>Cockpit:</b> Yes
<b>Helipad:</b> No	

## Dimensions

---

<b>LOA:</b> 42' 0" (12.80m)	<b>Beam:</b> 14' 0" (4.27m)
<b>Min Draft:</b> 3' 4" (1.02m)	<b>MFG Length:</b> 40' 10" (12.45m)

## Speed, Capacities and Weight

---

<b>Cruise Speed:</b> 26 Kts. (30 MPH)	<b>Max Speed:</b> 30 Kts. (35 MPH)
<b>Displacement:</b> 26000 Pounds	<b>Water Capacity:</b> 140 Gallons
<b>Holding Tank:</b> 60 Gallons	<b>Fuel Capacity:</b> 380 Gallons

## Accommodations

---

<b>Total Cabins:</b> 2	<b>Total Berths:</b> 4
<b>Sleeps:</b> 6	<b>Total Heads:</b> 1
<b>Captain Cabin:</b> False	

---

## Hull and Deck Information

---

**Hull Material:** Fiberglass

**Hull Configuration:** Modified V-Hull

---

## Engine Information

---

**Manufacturer:** Cummins

**Model:** QSB 5.9 with Zeus 3500 pod drives

**Engine Type:** Inboard

**Fuel Type:** Diesel

---

# DETAILED INFORMATION

---

## Hull

---

- Flag Blue hull with Sport White Decks
- Modified Deep V Planning hull, with shallow pod drive tunnels.
- 16° deadrise at transom, 23° deadrise amidships.
- ISO NPG white gelcoat w/vinylester back-up resin. Gray gelcoat finish
- Bottom, topsides and transom vacuum-infused biaxial E-glass with Airex C70 foam core.
- Stringer system biaxial E-glass with foam core.
- Bulkheads vacuum-bagged biaxial E-glass with polypropylene honeycomb core.
- Molded E-glass swim platform with molded-in anti-skid surface.
- Hull side rubbing strakes.
- PVC rub rail with stainless steel cap.
- Painted (IMRON) double boot top.
- Underwater lights

## Deck & Hardware

---

- ISO NPG gelcoat.
- Vacuum-infused biaxial E-glass with balsa core.
- Molded-in anti-skid deck surfaces.
- Stainless Steel bi-fold entry to salon.
- Opening windows in salon on cabin sides.
- Opening windows in salon aft bulkhead.
- Hinged access door to side deck at helm.
- Flush, outward opening, transom door with latch.
- Anchor locker with slam latch.
- Large lazarette locker hatch with gas struts and compression latches.
- Large engine room hatch in main salon with compression latch.

## Deck Hardware

---

- 1 1/4-inch Diameter type 316 stainless steel perimeter rail system.
- (6) 12-inch Stainless steel cleats (2 fwd, 4 mid ship, 2 in aft cockpit).
- (1) 10-inch Stainless steel cleat to starboard of windlass as anchor rode tie off.
- (2) Custom cast stainless steel mid-rail line chocks.
- (2) Custom cast stainless steel chocks forward.
- (4) Cast stainless steel hawse pipes in transom and hull sides.
- Fiberglass bow pulpit with dual anchor roller Delta anchor.

- Anchor windlass, electric rope-chain type.
- Flag staff and socket.
- Burgee staff on bow pulpit.
- (3) Lewmar Low Profile polished aluminum hatches w/screens.
- (6) Custom stainless steel opening port lights.
- Teak toe rails.
- Teak cabin side eye-brow.
- Custom cast stainless steel SABRE medallion.
- Additional outlets positioned in locations appropriate for entertainment systems in main and forward cabin
- 50amp, 3-bank battery charger
- Reverse cycle heat/ air conditioning in (3) zones.
- Kahlenberg dual chrome horns
- Searchlight
- Reverso oil change system
- Inverter/charger 2800 watt
- Hot and Cold transom shower
- Fresh water washdowns forward and aft.
- Salt water washdowns forward and aft.
- Shore water inlet.

---

## Stateroom, Forward

---

- Spacious Island Berth layout with 5" cushion. 3/4" laminated trim.
- Cherry hull ceilings.
- (2) Drawers under berth. A/C return grills under drawers.
- (2) drawers in bureau w/locker w/shelf above and single louvered door.
- Upper enclosed shelves with storage behind. Locker face to have (2) louvered doors.
- Recessed shelf with fiddle on starboard main bulkhead with 22" flat screen TV and DVD player.
- Large cedar lined hanging locker to port, with louvered door, shelf and hangar pole.
- Open shelf above port hanging locker.
- Teak and holly sole.
- Sound deadening soft headliner panels.
- Pocket door to forward stateroom.
- Dimmer switch for lighting

---

## Stateroom, Second

---

- Double berth, 5" foam cushions, 3/4" laminated trim.
- Cherry hull ceilings.

- (4) Drawers under berth, A/C return grille beside.
- Forward bulkhead storage locker, and shelf.
- Night stand with drawers below.
- Teak and holly sole.
- Sound deadening soft headliner panels.
- Optional dinette with privacy curtain

---

## Head

---

- Stainless steel under mount sink.
- Circular shower stall with seat and locker outboard.
- Hot and cold pressure water
- Electric shower sump pump.
- Storage lockers.
- Solid surface vanity top with bull nose.
- Cherry towel bars on head door.
- Wood trimmed mirror over sink.
- Ventilation blower.
- Full length mirror in door leading to the forward stateroom

---

## Galley

---

- Mid level galley.
- Solid surface galley counter top.
- Stainless steel under mount sink with Scandvik faucet.
- Vitrefrigo 2-drawer Refrigeration with stainless steel doors.
- Isotherm 1-drawer Freezer with stainless steel door.
- Two burner touch control electric cook top.
- Convection microwave with stainless steel door above aft counter.
- Drawers and storage lockers below counter.
- Built-in waste basket.
- Large drawer under microwave opens athwartships
- Dimmer switch for lighting

---

## Helm Station & Salon

---

- Electric sunroof
- Twin Stidd chairs
- Chart table
- L shaped settee in ultraleather



- Sofa to port in ultraleather
- Pop up 26" TV with DVD
- Cummins DTS single lever electronic controls.
- Two Cummins Smart Craft displays (engine data, tank levels, vessel data, alarms).
- Triple windshield wipers with washers.
- Ritchie Compass.
- Switch controls for horn, running lights, anchor light, engine room blower and optional equipment.
- Custom teak steering wheel with tilt helm.
- (2) Stidd N-series single helm seats.

---

## Propulsion

---

- Twin Cummins QSB 5.9l 380hp electronic, fresh water-cooled engines.
- Twin CMD Zeus 3500 pod drives, with integrated steering and trim tabs.
- 120A, 12V alternators each engine.
- (2) Exhaust by-pass mufflers.
- Engine room blower.
- Engine room vent ducts.
- Engine room floor with FRP anti-skid.
- White gelcoated engine room.
- Mylar face foam noise barrier.

---

## Fuel System

---

- (2) 190 gal diesel fuel tanks port and starboard.
- Racor fuel filters with water in fuel probes.
- (2) 2" Diesel deck fill plates.

---

## Steering and Trim Systems

---

- CMD helm, with joystick.
- Trim tabs integrated in CMD Zeus pod drives.
- Autopilot integrated in CMD Zeus system.
- GPS receiver included.
- Skyhook GPS position hold system.

---

## Electronics

---

- 2 Furuno Navnet TZ14 touch screen GPS/Radar/Chart plotter displays
- Furuno 4kw 3.5 foot digital open array
- Furuno digital fish finder
- Furuno 600 watt transducer
- Furuno weather station
- Furuno RD 33 display
- Furuno bronze thru hull transducer
- Icom m-504 VHF radio
- AIS receiver
- 4' digital VHF antennae
- KVH M3 Sat TV
- Iris night runner infrared/lowlux camera with joy stick control
- Sirius Radio

---

## 12VDC Electrical System

---

- Two AGM Group 31 dedicated engine start batteries.
- Two AGM 4D deep cycle ship's service batteries.
- One AGM Group 24 generator start battery.
- Remote control battery switches with controls at helm.
- Manual emergency battery crossover switch.
- Illuminated main circuit breaker distribution.
- Digital battery monitor.
- Lighting:
  - Danish cabin reading lights.
  - High output LED lights in the overhead.
  - Halogen bar lighting in appropriate locations.
  - Fluorescent engine room lighting.
  - Cockpit courtesy lights.
- Marine-grade, tinned wire throughout.

---

## 12VAC Electrical System

---

- Onan 9.0 kw generator including:
  - Dedicated start battery.
  - Water lift muffler.
  - Cooling water intake strainer.
  - Sound shield.
  - Transfer switch.
- 50A AC shore power inlet and Glendenning chord reel.
- Fail safe galvanic isolator.

- Illuminated main circuit breaker distribution panel.
- Digital AC system monitor
- (1) 120V outlet in each cabin and (1) in engine room.
- All galley and head receptacles are GFI protected

---

## Cockpit

---

- Fiberglass cabinet in starboard side to include electric grill with hinged top and icemaker.
- Dimmer switch for lights under hardtop
- Shore water inlet
- Salt water washdown fore and aft
- Water purifier on icemaker

---

## Decor

---

- Varnished cherry interior finish.
- Screens on all opening ports.
- Ocean Air screen/blinds on deck hatches.
- Ocean Air blinds on side windows and side door
- Optional fabric and drapery selections.
- Dovetailed maple drawer boxes

---

## Fresh Water System

---

- Water capacity 140 gals.
- Stainless steel, 11 gal. hot water heater, operates on 110-VAC or engine heat.
- Temperature control valve on hot water supply.
- Hot and cold water pressure system 12V.
- Fresh water spigot in engine room.
- Optional Cockpit shower, hot and cold.
- Optional Fresh water wash down in anchor locker.

---

## Waste Disposal

---

- Polyethylene holding tank with 60 gallon capacity.
- Jabsco Quiet Flush fresh water MSD.
- Diaphragm waste pump on holding tank.

---

## Additional Equipment

---

- Single Seagull water purifier on galley cold water plumbed to separate spigot
- Prep for combo washer and dryer in engine room, includes platform, electrical & plumbing
- (7) Additional dimmer switches: salon valance, galley, dinette valance, dinette overhead, forward cabin overheads & cockpit hardtop, fwd cabin on fwd end of storage lockers above berth on stbd side.
- Fusion Marine stereo iPod dock with (4) speakers & remote control. White speakers in cockpit & main salon
- 3rd zone to stereo & a set of Fusion speakers in the fwd cabin with a stereo remote installed on the end of the storage lockers above the berth. Same panel as the 120v outlet on the port side.
- Inverter/charger 2800 watt true sine wave w/remote control
- Searchlight mounted on optional hardtop mast (single beam light)
- Additional Vesselview display for Cummins engines
- 120V outlet in main salon mounted on bump out on the left side of the helm next to switches
- 120V outlet in the forward stateroom on the starboard side opposite of the port side outlet
- 120V outlet in cockpit outboard of grill cockpit cabinet
- Electric sunroof with sunscreen

- FRP molded electronics mast for sedan hardtop
- Kahlenberg dual chrome horns
- Hot and cold transom shower
- Fiberglass cabinet in starboard side of cockpit includes electric grille with hinged top & icemaker
- Accord shades on all opening ports
- Ultraleather upholstery main salon
- Dinette in second cabin converts to double berth
- Cut back bulkhead to guest cabin to maximize opening
- 26" TV with separate DVD in dinette centered below TV
- 22" Samsung LED TV in master cabin surface mounted with separate DVD
- Hanging locker port side master longer and taller
- Cherry towel bars on head door to companionway, upper & lower
- Chrome towel bar in head to accommodate two hand towels
- Mirror in upper and lower panel of door between head and forward cabin
- Gelcoat color of inside of transom door to match deck color
- Custom Decor

---

## Additional Information

---

This boat will be moving to Florida in October, 2014.

# PHOTOS

**Bow**



**Transom**



**Transom**



**Helm**



**Helm**



**Galley**





**Salon**



**Salon**



**Salon**



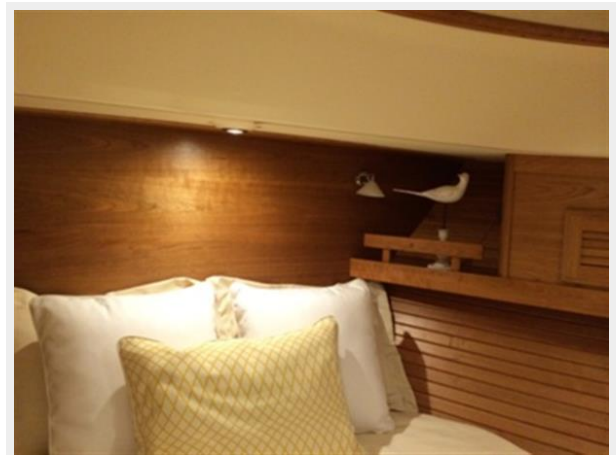
**Dinette / 2nd Stateroom**



**Dinette / 2nd Stateroom**



**Master Stateroom**





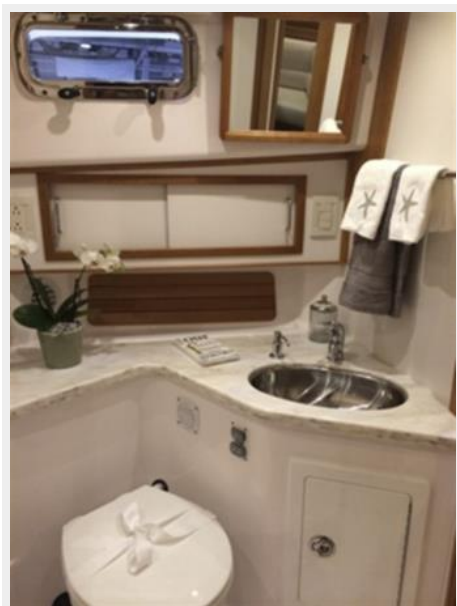
### Master Stateroom



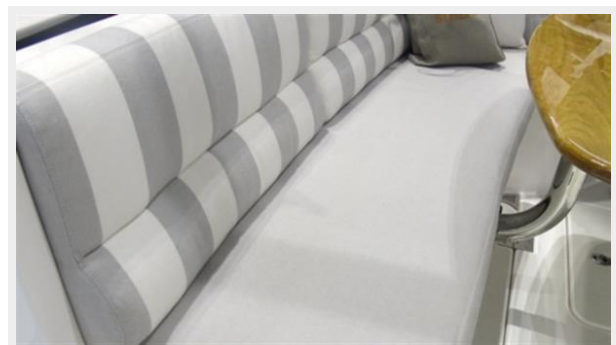
### Head



### Head



### Cockpit Seating



### Cockpit Seating



### Cockpit Table



### Cockpit Table



# CONTACTS

---

Andrey Shestakov, leading yacht broker of the sales department of Atlantic Yacht and Ship Inc. Atlantic Yacht and Ship Inc., the official representative of the Miami/Fort Lauderdale FL headquarters.

## Contact details

---

Email: [info@atlanticyachtandship.ru](mailto:info@atlanticyachtandship.ru)

Web: [www.atlanticyachtandship.ru/en/](http://www.atlanticyachtandship.ru/en/)

## Telephones

---

USA: +1 954 274-4435

RUS: +7 495 766-6268

## Office hours

---

Monday – Saturday: **9:00 - 21:00** EDT

Sunday: **closed**

## Address

---



Harbour Towne Marina, 850 NE 3rd St,  
STE 213, Dania, FL 33004