



SEA LA VIE — VIKING



Builder: [VIKING](#)

Year Built: 2006

Model: Sport Fisherman

Price: ~~\$650,000-USD~~ Off the market

Location: United States

LOA: 45' 0" (13.72m)

Beam: 16' 4" (4.98m)

Max Draft: 4' 6" (1.37m)

Our experienced yacht broker, Andrey Shestakov, will help you choose and buy a yacht that best suits your needs **Sea La Vie — VIKING** from our catalogue. Presently, at Atlantic Yacht and Ship Inc., we have a wide variety of yachts available on our sale's list. We also work in close contact with all the big yacht manufacturers from all over the world.

If you would like to buy a yacht **Sea La Vie — VIKING** or would like help answering any questions concerning purchasing, selling or chartering a yacht, please call **+1 954 274-4435**

TABLE OF CONTENTS

TABLE OF CONTENTS	2
SPECIFICATIONS	5
Overview	5
Basic Information	5
Dimensions	5
Speed, Capacities and Weight	5
Accommodations	5
Hull and Deck Information	6
Engine Information	6
DETAILED INFORMATION	7
Remarks	7
Salon	7
Galley	7
Master Stateroom	8
Master Head	8
Guest Stateroom Port	8
Guest Head	8
Electrical System	9
Electronics and Navigational Equipment	9
Fly Bridge	9
Cockpit	10
Exclusions	11
Exclusions	11
Disclaimer	11
PHOTOS	12
Salon	12
Salon Seating	12
Dinette	12

Galley	12
Electrical Panel	12
Sub Zeros	12
Laundry	13
Master Stateroom	13
Master Stateroom	13
Master Head	13
Master TV	13
VIP Stateroom	13
VIP Stateroom	14
VIP Head	14
Electronics	14
Helm	14
Helm Seating	14
Com	14
Electronics	15
Flybridge Seating	15
Flybridge Seating	15
Teaser Reels	15
Mezzanine Seating	15
Cockpit	15
Cockpit	16
Fighting Chair	16
Engine Room	16
Engine Room	16
Generator	16
Port Profile	16
Bow	17
Transom	17

Transom	17
Transom	17
CONTACTS	18
Contact details	18
Telephones	18
Office hours	18
Address	18

SPECIFICATIONS

Overview

Galati Yacht Sales has been committed to exceeding the expectations of its customers for more than 42 years, and we understand that purchasing a boat is a big decision. Our professional staff is here to assist you in every way – before, during and after the sale. Please feel free to contact us with any questions that you may have.

Basic Information

Category: Sport Fisherman

Sub Category: Convertible

Model Year: 2006

Year Built: 2006

Country: United States

Fly Bridge: Yes

Cockpit: Yes

Dimensions

LOA: 45' 0" (13.72m)

Beam: 16' 4" (4.98m)

Max Draft: 4' 6" (1.37m)

Speed, Capacities and Weight

Displacement: 49750 Pounds

Water Capacity: 150 Gallons

Holding Tank: 50 Gallons

Fuel Capacity: 848 Gallons

Accommodations

Total Cabins: 2

Total Heads: 2

Hull and Deck Information

Hull Material: Fiberglass

Engine Information

Engines: 2

Manufacturer: MAN

Model: 900 Common Rail

Engine Type: Inboard

Fuel Type: Diesel

DETAILED INFORMATION

Remarks

This 45' 2006 Viking Convertible "Sea La Vie" is a fine example of an owner that spares no expense keeping his boat up. This boat is in **exceptional** condition!. If you are in the market for a 45' convertible, you owe it to yourself to look at this one before you purchase any other vessel. You will not be disappointed!

Salon

- Upgraded sofa with hinged storage
- Upgraded carpet throughout
- Dimmer on overhead lights
- Home theater system
- 32" LCD TV
- Rope lights behind valances
- Main electrical panel ~ A/C & D/C
- Sliding salon door
- Amtico flooring at entrance
- Carpet runner
- Teak counter top on Credenza
- Storage in Credenza to starboard
- Teak on aft facing galley island

Galley

- Dimmers on all overhead lights
- Dinette with storage
- Teak dinette table and pedestal
- Electrical sub panel for galley appliances
- Exhaust fan over cook top
- (3) burner recessed cook top
- Garbage disposal
- Microwave/convection over concealed cabinet
- Refrigerator and Freezer under counter drawers
- Storage cabinet in upper galley with pullout access
- Amtico flooring in galley
- Smoked mirror backsplash

Master Stateroom

- Independent air conditioning and heat with temperature control
- Upgraded bedspread and shams
- Full walk around bed with storage beneath
- Dimmers on overhead lights
- Large hanging locker
- Upgraded mattress
- Overhead reading lights
- 15" LCD flatscreen TV

Master Head

- Dimmers on overhead lights
- Exhaust fan
- Linen storage
- Medicine cabinet
- 120 volt outlet
- Stall shower
- Automatic sump pump
- Towel bar and rings
- Amtico flooring

Guest Stateroom Port

- Independent A/C and heat with temperature control
- Upgraded bedspread and shams
- Carpeting
- Large hanging locker
- Reading lights
- Sheets
- 15" LCD flatscreen TV
- Storage under lower bunk
- Over and under bunks

Guest Head

- Dimmers on overhead lights
- Exhaust fan
- Storage in lower cabinets
- Lower vanity with Teak face
- Medicine cabinet

- 120 volt receptacle
- Stall shower
- Towel bar and ring
- Amtico flooring

Electrical System

- 24 volt ship service throughout
- 24 volt/ 12 volt power supply with breakers
- 110 volt outlet in engine room
- Navigation lights
- (2) independent 24 volt banks of batteries
- Battery charger
- Battery distribution panel
- Battery parallel system
- Bonded electrical system
- Color coded wiring throughout
- AC and DC engine room lights
- 17 kW generator
- Master electrical panel located in salon
- Sub panel in galley for appliances
- Voltage stabilizers isolation transformers

Electronics and Navigational Equipment

- 3 - Underwater Lights
- 3 - E120 Raymarine Display Screens
- Raymarine Chartplotter
- Raymarine Radar
- Raymarine Depthfinder
- FLIR Night Vision
- Back up Raymarine RC435 Chartplotter
- Moritz Monitoring System
- Simrad Autopilot
- 2 - ICOM 602 VHF's
- US9 Recessed Teaser Reels in the Hardtop
- Raymarine SAT TV
- ITT Jabsco Remote Spotlight
- Sirius Weather

Fly Bridge

- Single lever controls
- Murray Brother chairs
- Storage under bench seating
- Storage in forward brow
- Storage under helm
- Fire system control
- Fuel gauges
- Manual engine shutdown
- Electric teaser reels
- Double spreader outriggers
- Center rigger
- Moritz safety monitoring system
- Recessed electronics boxes
- Non-skid deck
- Recess radio box
- Stereo speakers
- Starboard jump seat
- Trim tab controls
- Air horn

Cockpit

- Boarding box
- Cable TV and phone connections
- Gaff storage
- 50 amp dockside cable master
- Dockside water connection
- Engine room access
- External flybridge overhang
- Fresh and salt water washdown
- Release Marine fighting chair
- Indirect lighting
- Speakers for stereo
- Freezer
- Cutting board
- Tackle storage in locker
- Lazarette access
- (4) rod holders
- In-deck fish box
- Transom live well
- In-deck storage
- Refrigerated step box
- Molded in tackle center

- Self bailing cockpit
- Stainless gas shocks for all hatches
- Transom door with flip gate
- (2) Rod Holders in each Haunch

Exclusions

Owner's personal property.

Exclusions

Owner's personal belongings. Owner's personal toys, including but not limited Jet-skis, Tenders, Sea Bobs, Fishing & Diving equipment.

Disclaimer

The Company offers the details of this vessel or yacht in good faith but cannot guarantee or warrant the accuracy of this information nor warrant the condition of the vessel. A buyer should instruct his representatives, agents, or his surveyors, to investigate such details as the buyer desires validated. This vessel or yacht is offered subject to prior sale, price change, or withdrawal without notice.

PHOTOS

Salon



Salon Seating



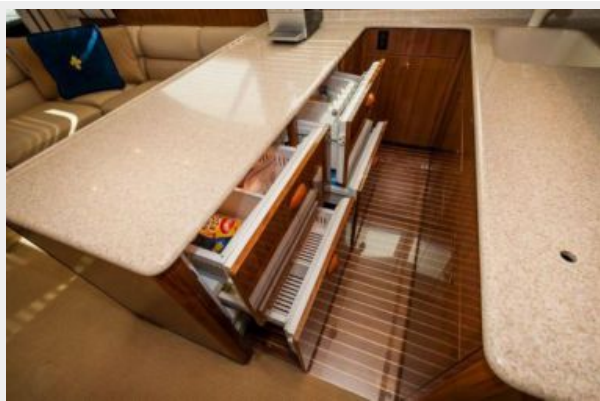
Dinette



Galley



Sub Zeros



Electrical Panel



Laundry



Master Stateroom



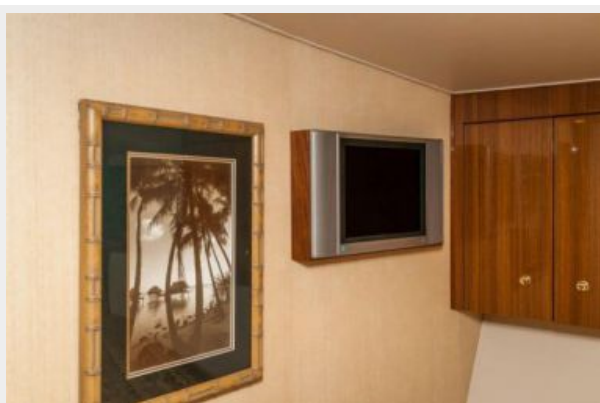
Master Stateroom



Master Head



Master TV



VIP Stateroom



VIP Stateroom



VIP Head



Electronics



Helm



Helm Seating



Com



Electronics



Flybridge Seating



Flybridge Seating



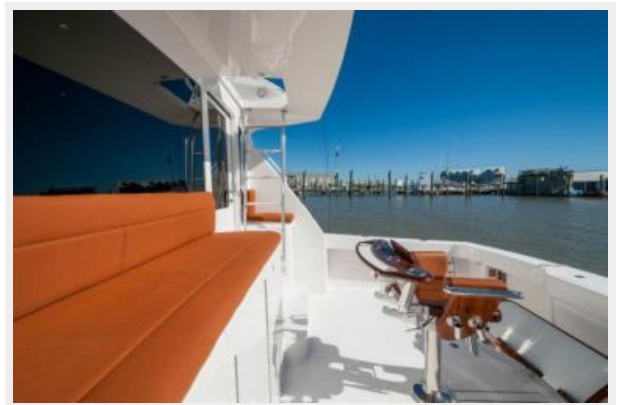
Teaser Reels



Mezzanine Seating



Cockpit



Cockpit



Fighting Chair



Engine Room



Engine Room



Generator



Port Profile



Bow



Transom



Transom



Transom



CONTACTS

Andrey Shestakov, leading yacht broker of the sales department of Atlantic Yacht and Ship Inc. Atlantic Yacht and Ship Inc., the official representative of the Miami/Fort Lauderdale FL headquarters.

Contact details

Email: info@atlanticyachtandship.ru

Web: www.atlanticyachtandship.ru/en/

Telephones

USA: +1 954 274-4435

RUS: +7 495 766-6268

Office hours

Monday – Saturday: **9:00 - 21:00** EDT

Sunday: **closed**

Address



Harbour Towne Marina, 850 NE 3rd St,
STE 213, Dania, FL 33004