



## ODYSSEY II — AZIMUT



**Builder:** [AZIMUT](#)

**Year Built:** 1995

**Model:** Motor Yacht

**Price:** ~~\$790,000 AUD~~ Off the market

**Location:** Australia

**LOA:** 78' 0" (23.77m)

**Beam:** 19' 0" (5.79m)

**Min Draft:** 4' 4" (1.32m)

**Cruise Speed:** 12 Kts. (14 MPH)

**Max Speed:** 24 Kts. (28 MPH)

Our experienced yacht broker, Andrey Shestakov, will help you choose and buy a yacht that best suits your needs **ODYSSEY ii — AZIMUT** from our catalogue. Presently, at Atlantic Yacht and Ship Inc., we have a wide variety of yachts available on our sale's list. We also work in close contact with all the big yacht manufacturers from all over the world.

If you would like to buy a yacht **ODYSSEY ii — AZIMUT** or would like help answering any questions concerning purchasing, selling or chartering a yacht, please call **+1 954 274-4435**

---

# TABLE OF CONTENTS

---

TABLE OF CONTENTS	2
SPECIFICATIONS	3
Overview	3
Basic Information	3
Dimensions	3
Speed, Capacities and Weight	3
Accommodations	3
Hull and Deck Information	4
Engine Information	4
PHOTOS	5
CONTACTS	9
Contact details	9
Telephones	9
Office hours	9
Address	9

---

# SPECIFICATIONS

---

## Overview

---

A well presented 78' AZIMUT FLYBRIDGE MOTOR YACHT is powered with dual 1150HP MTU 12V183TE shaft drive diesel engines giving a comfortable and economical cruise speed of 12 knots. The flybridge and pilothouse helm stations feature Raymarine electronics, Nobeltec Admiral navigation package, electronic engine controls, bow thruster and Naiad stabilisers to mention a few of her many inclusions. There is also an aft deck helm station to assist in easy docking and teak laid full walk around decks for great access to all parts of the deck. Her accommodation includes 4 staterooms sleeping 8 adults and a separate crew cabin forward for 3. The indoor and outdoor areas throughout are great for all types of entertaining

## Basic Information

---

**Category:** Motor Yacht

**Model Year:** 1995

**Year Built:** 1995

**Country:** Australia

## Dimensions

---

**LOA:** 78' 0" (23.77m)

**Beam:** 19' 0" (5.79m)

**Min Draft:** 4' 4" (1.32m)

## Speed, Capacities and Weight

---

**Cruise Speed:** 12 Kts. (14 MPH)

**Max Speed:** 24 Kts. (28 MPH)

**Water Capacity:** 441.16732684 Gallons

**Fuel Capacity:** 1545.4065042 Gallons

## Accommodations

---

**Total Cabins:** 4

**Sleeps:** 8

---

## Hull and Deck Information

---

**Hull Material:** GRP

---

## Engine Information

---

**Engines:** 2

**Manufacturer:** MTU

**Model:** 12V183TE 1150hp each

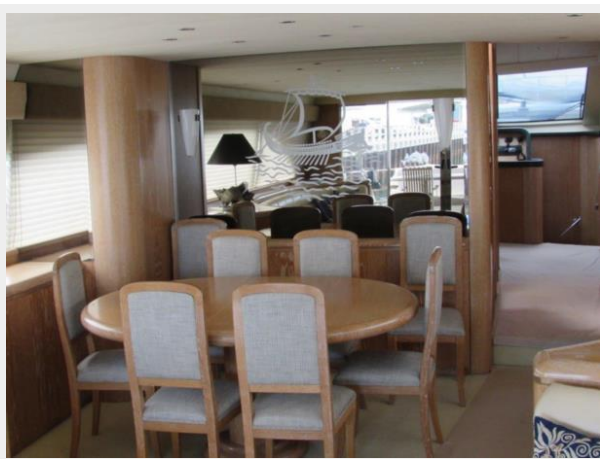
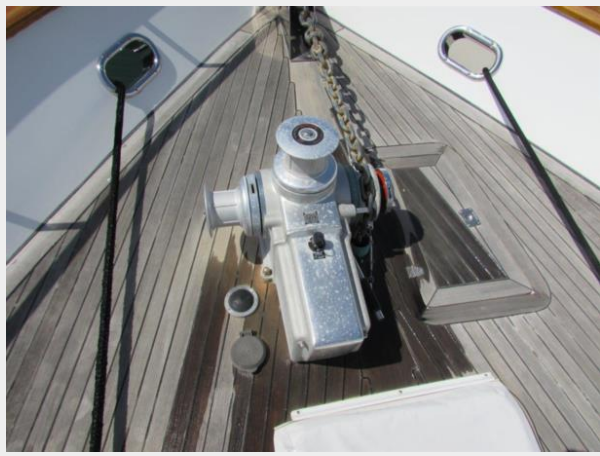
**Fuel Type:** Diesel

# PHOTOS











# CONTACTS

---

Andrey Shestakov, leading yacht broker of the sales department of Atlantic Yacht and Ship Inc. Atlantic Yacht and Ship Inc., the official representative of the Miami/Fort Lauderdale FL headquarters.

## Contact details

---

Email: [info@atlanticyachtandship.ru](mailto:info@atlanticyachtandship.ru)

Web: [www.atlanticyachtandship.ru/en/](http://www.atlanticyachtandship.ru/en/)

## Telephones

---

USA: +1 954 274-4435

RUS: +7 495 766-6268

## Office hours

---

Monday – Saturday: **9:00 - 21:00** EDT

Sunday: **closed**

## Address

---



Harbour Towne Marina, 850 NE 3rd St,  
STE 213, Dania, FL 33004