



TORSK — ROMSDAL



Builder: ROMSDAL

Year Built: 1965

Model: Trawler

Price: PRICE ON APPLICATION

Location: Montenegro

LOA: 55' 0" (16.76m)

Max Draft: 7' 6" (2.29m)

Cruise Speed: 7 Kts. (8 MPH)

Max Speed: 9 Kts. (10 MPH)

Our experienced yacht broker, Andrey Shestakov, will help you choose and buy a yacht that best suits your needs **Torsk — ROMSDAL** from our catalogue. Presently, at Atlantic Yacht and Ship Inc., we have a wide variety of yachts available on our sale's list. We also work in close contact with all the big yacht manufacturers from all over the world.

If you would like to buy a yacht **Torsk — ROMSDAL** or would like help answering any questions concerning purchasing, selling or chartering a yacht, please call +1 954 274-4435

TABLE OF CONTENTS

TABLE OF CONTENTS	2
SPECIFICATIONS	4
Overview	4
Basic Information	4
Dimensions	4
Speed, Capacities and Weight	4
Accommodations	4
Hull and Deck Information	5
Engine Information	5
DETAILED INFORMATION	6
Galley	6
Mechanics	6
Electronics	6
Electrical System Main Features	7
Deck & Hull	7
Miscellaneous	7
Sail Rigging	7
Exclusions	7
Disclaimer	8
PHOTOS	9
Filters	9
Panorama Salon	9
Panorama Galley	9
Panoram Engine Room	9
Wheelhouse	9
Water Filters	9
Master Cabin	10
Layout	10

Siddeck	10
Engine	10
Stove	11
Pilothouse	11
Head	11
Salon	11
Head 2	12
CONTACTS	13
Contact details	13
Telephones	13
Office hours	13
Address	13

SPECIFICATIONS

Overview

Ocean going steel trawler by the renown North Sea trawler builder Romsdal and powered by Gardner engine. Torsk sailed on her own bottom to the US in 1965. The current owner is an American who purchased the yacht in Anacortes, Wa. and after cruising PNW, had her shipped to Europe in 2008 where he continued enjoying in the Med. Now based in Montenegro, this classic ship is for sale.

Basic Information

Category: Trawler

Sub Category: Long Range Cruiser

Model Year: 1965

Year Built: 1965

Country: Montenegro

Dimensions

LOA: 55' 0" (16.76m)

Max Draft: 7' 6" (2.29m)

Speed, Capacities and Weight

Cruise Speed: 7 Kts. (8 MPH)

Cruise Speed RPM: 1050 Kts.

Max Speed: 9 Kts. (10 MPH)

Max Speed RPM: 1300 Kts.

Displacement: 110013 Pounds

Water Capacity: 1000 Gallons

Holding Tank: 50 Gallons

Fuel Capacity: 2000 Gallons

Accommodations

Total Cabins: 2

Total Berths: 3

Sleeps: 3

Total Heads: 2

Hull and Deck Information

Hull Material: Steel

Deck Material: Steel

Hull Configuration: Full Displacement

Hull Color: white

Engine Information

Engines: 1

Manufacturer: Gardner

Model: 8LXTD

Engine Type: Inboard

Fuel Type: Diesel

DETAILED INFORMATION

Galley

- 3 burner stainless steel propane stove oven
- Cold plate fridge/freezer with teak and stainless locker doors new compressors
- Microwave
- Stainless steel countertops with deep stainless sink

Mechanics

Gardner 6cyl. 6LXDT Turbocharged Light duty = 206 hp @ 1700 rpm Continuous duty = 182 hp @ 1500 rpm

Maximum fuel consumption of 19 liters at 1300rpm at 8.8 knots; cruise speed sweet spot at 1050rpm at 7.2 knots burns 12 liters.

- Electric Heating
- Hurricane hot water diesel heat
- 10 gal. hot water heater
- (2) Gulf Coast fuel filtering system
- Gulf Coast oil filtering system
- Watermaker

Electronics

- Raymarine Pathfinder chart system
- Robertson AP35 autopilot with remote
- Raytheon R21 Rasterscan Radar
- Stenfjord Mek. Verkstad rdr indicator
- Raytheon ST60 depth finder
- Furuno FCV-667 color video sounder
- Maximum wind speed indicator
- Frahm frequency meter
- Horizon Spectrum VHF
- Sea156 VHF FM Radiotelephone
- ACR AIS class B unit
- NobleTech chart plotting w/Panasonic Toughbook
- KVH Trac phone

Electrical System Main Features

- 8-10 KW Northern lights gen set
- Off engine cruise generator
- Xantrex 2000 watt inverter
- Heart 3000 watt interface
- 3000amp AGM batteries replaced
- 10 Kyocera solar panels w/charge controller 250-300 AMP hrs/day

Deck & Hull

- Hydraulic windless
- Hydraulic bowthruster
- Fixed stabilizers
- 14' Custom lap-strake fiberglass tender
- Electric davit system and boom
- Crows nest
- Active stack
- Commercial size stainless spotlight
- Spreader lights
- Docking lights
- 6 man life raft w/cradle

Miscellaneous

Stand-up work shop in eng. room with drill press, compressor, extensive tools, manuals, parts etc. All custom cherry wood and stainless trimmed interior Custom tile and stainless wood fireplace Nearly 6 year previous complete refit that included full hull restoration, sterling paint, all new interior professionally designed and installed and much more.

Sail Rigging

Forward sail

Winches

New boom for the forward mast

Exclusions

Owner's personal belongings. Owner's personal toys, including but not limited Jet-skis, Tenders, Sea Bobs, Fishing & Diving equipment.

Disclaimer

The Company offers the details of this vessel or yacht in good faith but cannot guarantee or warrant the accuracy of this information nor warrant the condition of the vessel. A buyer should instruct his representatives, agents, or his surveyors, to investigate such details as the buyer desires validated. This vessel or yacht is offered subject to prior sale, price change, or withdrawal without notice.

PHOTOS

Filters



Panorama Salon



Panorama Galley



Panoram Engine Room



Wheelhouse



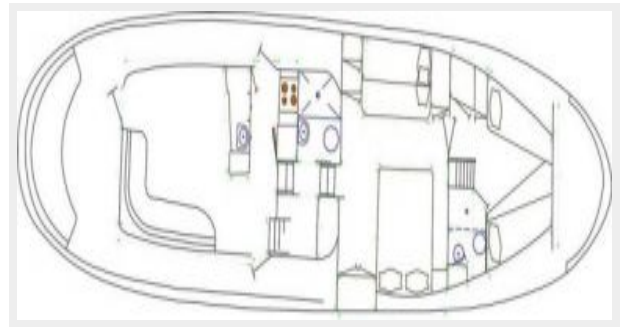
Water Filters



Master Cabin



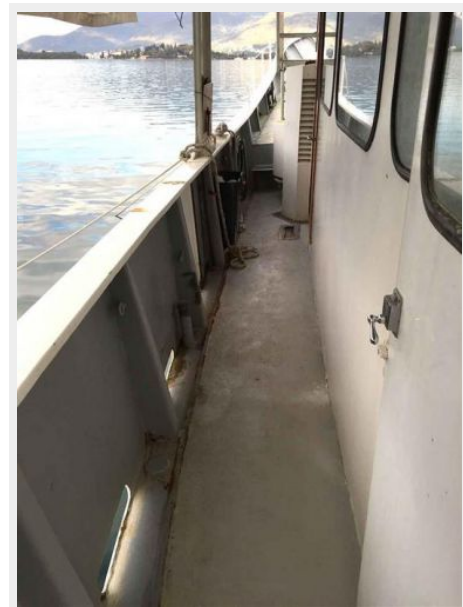
Layout



Engine



Siddeck



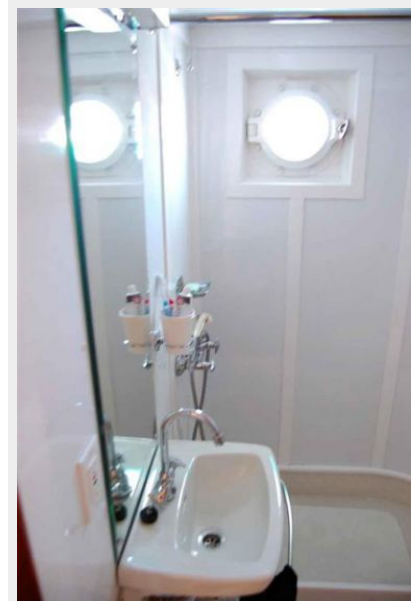
Stove



Pilothouse



Head



Salon



Head 2



CONTACTS

Andrey Shestakov, leading yacht broker of the sales department of Atlantic Yacht and Ship Inc. Atlantic Yacht and Ship Inc., the official representative of the Miami/Fort Lauderdale FL headquarters.

Contact details

Email: info@atlanticyachtandship.ru

Web: www.atlanticyachtandship.ru/en/

Telephones

USA: +1 954 274-4435

RUS: +7 495 766-6268

Office hours

Monday – Saturday: **9:00 - 21:00** EDT

Sunday: **closed**

Address



Harbour Towne Marina, 850 NE 3rd St,
STE 213, Dania, FL 33004