



GRAND LADY — FLEMING YACHTS



Builder: FLEMING YACHTS

Year Built: 2001

Model: Motor Yacht

Price: PRICE ON APPLICATION

Location: Sweden

LOA: 55' 9" (16.99m)

Beam: 16' 0" (4.88m)

Max Draft: 5' 0" (1.53m)

Cruise Speed: 8 Kts. (9 MPH)

Max Speed: 14 Kts. (16 MPH)

Our experienced yacht broker, Andrey Shestakov, will help you choose and buy a yacht that best suits your needs **Grand Lady — FLEMING YACHTS** from our catalogue. Presently, at Atlantic Yacht and Ship Inc., we have a wide variety of yachts available on our sale's list. We also work in close contact with all the big yacht manufacturers from all over the world.

If you would like to buy a yacht **Grand Lady — FLEMING YACHTS** or would like help answering any questions concerning purchasing, selling or chartering a yacht, please call **+1 954 274-4435**

TABLE OF CONTENTS

| | |
|------------------------------|----|
| TABLE OF CONTENTS | 2 |
| SPECIFICATIONS | 3 |
| Overview | 3 |
| Basic Information | 3 |
| Dimensions | 3 |
| Speed, Capacities and Weight | 3 |
| Accommodations | 4 |
| Hull and Deck Information | 4 |
| Engine Information | 4 |
| PHOTOS | 5 |
| CONTACTS | 12 |
| Contact details | 12 |
| Telephones | 12 |
| Office hours | 12 |
| Address | 12 |

SPECIFICATIONS

Overview

Fleming 55 pilothouse motoryacht "Grand Lady", built by Fleming yachts in 2001 and customized in 2007 by her current owner. Complete history and information regarding upgrades available! (ask for additional information). The current owner is a former yacht designer and part manufacturer who want to create the optimal motor yacht for his private use in Scandinavia. This Fleming 55 with extended saloon, closed galley and three cabin layout offers a lot of living space, perfect for a longer stay on board! Very well maintained and viewing is highly recommended!

Basic Information

Category: Motor Yacht

Sub Category: Liveaboard

Model Year: 2001

Year Built: 2001

Refit Year: 2007

Country: Sweden

Vessel Top: Bimini Top

Fly Bridge: Yes

Cockpit: Yes

Dimensions

LOA: 55' 9" (16.99m)

LWL: 50' 11" (15.50m)

Beam: 16' 0" (4.88m)

Max Draft: 5' 0" (1.53m)

Clearance: 5' 0" (1.52m)

Speed, Capacities and Weight

Cruise Speed: 8 Kts. (9 MPH)

Max Speed: 14 Kts. (16 MPH)

Displacement: 32000 Pounds

Water Capacity: 1132 Gallons

Holding Tank: 380 Gallons

Fuel Capacity: 3880 Gallons

Accommodations

Total Cabins: 3

Total Berths: 6

Total Heads: 2

Hull and Deck Information

Hull Material: GRP

Hull Configuration: Deep Vee

Hull Color: white

Hull Designer: Larry Drake

Exterior Designer: Larry Drake

Engine Information

Engines: 2

Manufacturer: Caterpillar

Model: 3208

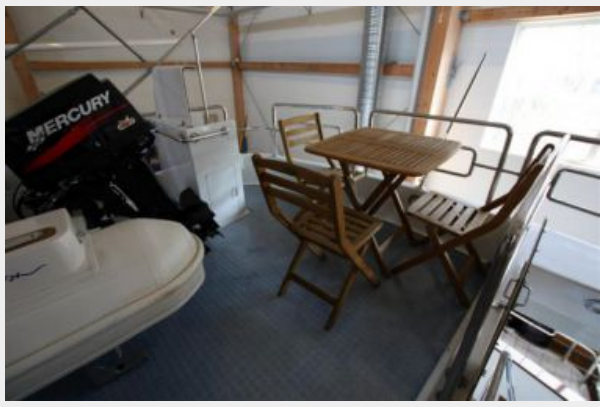
Engine Type: Inboard

Fuel Type: Diesel

PHOTOS



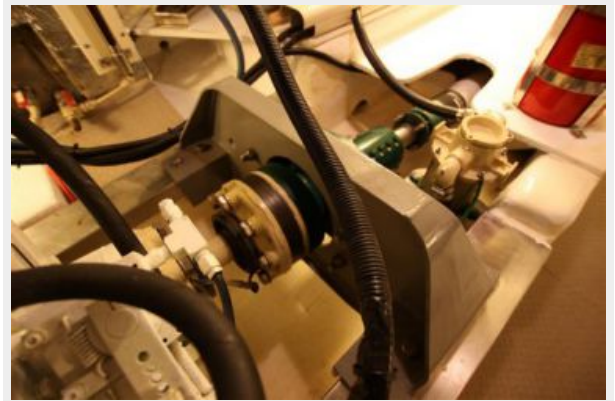












CONTACTS

Andrey Shestakov, leading yacht broker of the sales department of Atlantic Yacht and Ship Inc. Atlantic Yacht and Ship Inc., the official representative of the Miami/Fort Lauderdale FL headquarters.

Contact details

Email: info@atlanticyachtandship.ru

Web: www.atlanticyachtandship.ru/en/

Telephones

USA: +1 954 274-4435

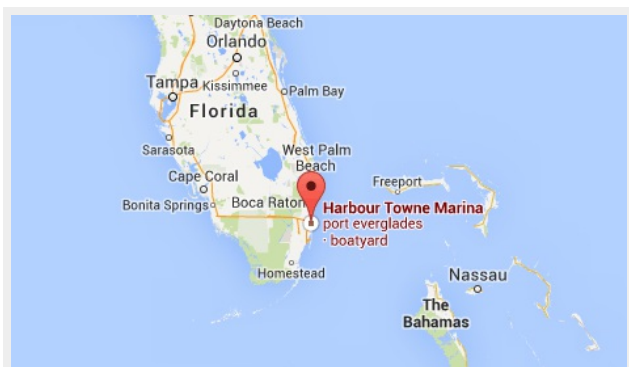
RUS: +7 495 766-6268

Office hours

Monday – Saturday: **9:00 - 21:00** EDT

Sunday: **closed**

Address



Harbour Towne Marina, 850 NE 3rd St,
STE 213, Dania, FL 33004