



OCEAN KING 88 — CANTIERI NAVALI CHIOGGIA



Судостроитель:
CANTIERI NAVALI CHIOGGIA

Год постройки: 2016

Модель: Моторная яхта

Цена: ЦЕНА ЯХТЫ ПО ЗАПРОСУ

Местонахождение: Italy

Длина общая: 88' 0" (26.82m)

Ширина: 26' 6" (8.08m)

Мин. осадка: 8' 2" (2.49m)

Крейс. скорость: 11 Kts. (13 MPH)

Макс. скорость: 12 Kts. (14 MPH)

Купить Ocean King 88 — CANTIERI NAVALI CHIOGGIA а также выбрать подходящую вам яхту из нашего каталога яхт вам поможет опытный яхтенный брокер Андрей Шестаков. На сегодняшний день компания Atlantic Yacht and Ship Inc. имеет большое количество яхт в собственном списке продаж, а также тесно сотрудничает со всеми крупными яхтенными производителями по всему миру. Для того чтобы купить яхту Ocean King 88 — CANTIERI NAVALI CHIOGGIA а также проконсультироваться по любому вопросу связанному с покупкой, продажей, чартером яхт позвоните по телефону **8 800 234-4456** (бесплатно по РФ).

ОГЛАВЛЕНИЕ

ОГЛАВЛЕНИЕ	2
ХАРАКТЕРИСТИКИ	4
Обзор	4
Основная информация	4
Размеры	4
Скорость, вместимость и масса	4
Размещение	5
Корпус и палуба	5
Информация о двигателе	5
ПОДРОБНОЕ ОПИСАНИЕ	6
Hull	6
Superstructure	6
Engine Room	6
Noise levels	7
Systems	7
Electrical Equipment	8
Paintwork	9
Navigation & communication equipment	10
Deck	10
Interior	11
Optional	12
Delivery package	13
Исключения	13
Отказ от ответственности	13
ФОТОГРАФИИ	14
КОНТАКТЫ	17
Контактная информация	17
Телефоны	17

Время работы	17
Адрес	17

ХАРАКТЕРИСТИКИ

Обзор

The Ocean King range are explorer vessels built on a deep sea tug platform utilising the same technology, strength and safety standards. Offering low fuel consumption, low maintenance and operation by a small crew. Built by CNC, an Italian Adriatic commercial shipyard, these are strong, long range, stable vessels.

Основная информация

Тип судна: Моторная яхта

Подкатегория: Expedition

Модельный год: 2016

Год постройки: 2016

Страна: Italy

Размеры

Длина общая: 88' 0" (26.82m)

Длина по ватерлинии: 79' 10" (24.33m)

Ширина: 26' 6" (8.08m)

Мин. осадка: 8' 2" (2.49m)

Скорость, вместимость и масса

Крейс. скорость: 11 Kts. (13 MPH)

Дальность на крейсерской скорости:
5000

Макс. скорость: 12 Kts. (14 MPH)

Водоизмещение: 550000 Pounds

Вместимость воды: 2958.7269824
Gallons

Вместимость сточного бака: 792.516156
Gallons

Объем топливного бака: 10434.796054
Gallons

Расход топлива: 29.05892572 Gallons

Размещение

Всего кают: 4

Всего коек: 8

Спальные места: 8

Каюты экипажа: 3

Койки экипажа: 5

Спальных мест экипажа: 5

Корпус и палуба

Материал корпуса: Steel

Материал палубы: Teak

Комплектация корпуса: Full
Displacement

Отделка корпуса: Steel

Дизайнер экстерьера: Innave Yacht
Design

Дизайнер интерьера: Innave Yacht
Design

Информация о двигателе

Двигатели: 2

Производитель: MAN

Модель: D2842 LE419

Тип двигателя: Inboard

Тип топлива: Diesel

ПОДРОБНОЕ ОПИСАНИЕ

Hull

Double bottom steel hull with integral tanks. All the tanks shall be structural. The double bottom shall be extended from the collision bulkhead to the transom, excluding the area reserved for the engine room. Proper holes shall be drilled on the Keelsons, floor plates and currents to enable the easy drainage of liquids. The tanks included in the double bottom, shall be provided with a proper number of manholes for inspection and cleaning. All the tanks shall have drainages. The fresh water tanks shall be treated with products suitable for the conversion of running water. The plating, built up profiles and standard profiles are to R.I.N.A. specifications FE 430 (Grade A) or better. The workmanship and welding is according to the highest standards of shipbuilding and according to R.I.N.A. regulations. Topsides, decks and transom shall typically be fair and smooth. Sheer, deck lines and rub rails executed fair and without bumps. All welding work carried out by qualified welders. Where appropriate the welds will be ground smooth. Steel Hull Plating FE 430 Grade A factory blasted and epoxy coated, thickness: Bottom Plate = 5/10" - 4/10" (12-10 mm) and Side Plating = 5/16" (8 mm). Keel: Steel FE 430 Grade A thickness 8/10" (20 mm). Collision bulkhead with water tight bilges and bulkheads throughout the boat Fully protected propellers with nozzle of 1400 mm diameter five blades. Stainless steel bulwark caps, SS solid rod lining at all scuppers and hawse holes and 4" SS pipe rub rail. Stainless steel ports in hull sides with deadlights. Interior partition walls are fully insulated up to 3¼" for maximum sound proofing. All accommodations thermally insulated, including the hull. All house doors are water resistant and lockable.

Superstructure

The superstructure built in Light alloy type H5083 weld in accordance with high standard R.I.N.A. The workmanship and welding shall be typically fair and smooth. Deck lines executed without bumps. All welding done by experienced welders. All external welds will be ground smooth. Aluminum 5083 type for Superstructure: plate: 1/4" (6 mm). Plating: Light alloy type 5083 thickness: 6mm. Built up profiles and stiffeners: As plating. Mast: It shall be realized in welded light alloy and bolted to the bridge with support for radars, antennas, lights. Light alloy 5083 Superstructure fully fairing Yacht Standard High Gloss.

Engine Room

Two MAN D 2842 LE 419 rated at 1800 rpm continuous commercial duty marine diesel engines, four stroke, 12 cylinder V, turbocharged, intercooler with mechanically controlled fuel injection. Engine Data: Bore and Stroke: 5,04 in x 5,59 in (128 mm x 142 mm) Cylinder displacement: 1338 cu in (21,93 liters) Compression Ratio: 15,5:1 Weight: 4,092 lbs (1.790 Kg) Rating Level: 598 Hp (440 KW) at 1,800 rpm Fuel consumption at maximum power: 29,7 Gal/hr (114 L/hr) Typical 25,000 hours to major engine service or rebuild Soft engine mounts with anti vibration coupling

Engine room engine gauges: Insulated engine room with inox steel hole plating coating for great professional look, easy maintenance and cleaning. Nr. 1 Main Switchboard with Touch Screen monitor and automation plant. Nr. 1 door with steering lock from engine room to stern garage. Nr. 1 aluminum door with steering lock from main deck to engine room. Nr. 2 professional Azimuth rudder propeller (Fixed Pitch Thruster Z-Drive) ZF model: AT4111 WM-FP. Nr. 2 Five (5) blades bronze propellers diameter: 55" (130 cm). Water tight access doors. Polished stainless steel hand rails. Nr. 4 axial fans 380 V, 0,75 Kw at 1400 rpm with automatic fire dampers. AC and DC lighting. Aluminum non-slip flooring.

Noise levels

Acoustic and noise anti vibration insulation in engine room, all interior bulkheads, main & lower deck floors. Double acoustic bulkheads between the engine room and accommodations. Maximum acceptable sound levels throughout vessel shall be determined with the vessel operating at maximum continuous rated speeds with all specified equipment in operation. Estimated sound levels at Cruise speed at 9 knots with all normal services and air conditioning in operation are as follows. Location: Main Saloon <50 dB Pilot House <48 dB Owner Suite <50 dB Guest Staterooms <50 dB

Systems

Fuel System: Fueling station on main deck (one STBD one PTB) w/surge tank, sight gauges and spill retention system. Large diameter piping system vents in funnels in order to refuel Diesel in a few hours. Fuel transfer system from tanks (six) to Day tanks (two) with pre-plumbed professional 380 V - 50 Hz pump 'Gianneschi' mod. CP30 0,37 Kw at 1450 rp. The fuel transfer from tanks to day tanks shall take place through a centrifugal purifier with water separator Alfa-Laval or Westfalia mod. OTC 3 capacity 600 l/h. Fuel lines and valves all steel with weld piping. Dual Racor filter/water separators 500 micron from day tanks to main engines with manifold. Racor filter/water separators 500 micron at generators. Fuel tanks (six) all integral to hull, and two (2) day tanks. Liquid level indicators on all fuel tanks, as well as site gauges on day tanks brand VEGA or similar. Main Engines Cooling and Exhaust System: Sea water cooling open circuit for Engines and Generators Riser type with heat exchanger brand Co.Fe.Me or equivalent. Dual Sea chests with professional manifold. Bilge Pumping System: A complete professional bilge pumping system is installed with two professional bilge pumps 380 V- 50Hz 4 Kw each at 1450 rpm with a capacity of 20 M3/h with automatic alarms for high water in bilge and water sensor. Each pump will have inline check valves and auto/off/manual selection switch. All pumps will be also used for fire-fighting use. The bilge tank shall have the capacity as foreseen by the regulations and a disembarkment line ashore in compliance with MARPOL regulations. Valves plant will be electric Wafer type and will be controlled from the Automation plant trough touchscreen monitor in Main Switchboard in engine room and/or in pilothouse. On request will be installed a depuration plant for bildge water brand RWO mod. SKIT of capacity 100 l/h with IMO certification. Fresh Water System : One complete water pressure system will be installed, with integrated steel tank, two professional pre-plumbed JET pumps, 380 V- 50Hz 2 Kw at 1450 rpm

brand 'Gianneschi' with pressure tank, piping, valves, fittings, pressure gauge and pressure control. On request, will be supplied a second JET pump for pressure wash down decks with some taps with quick coupling. On swim platform will be installed one faucet with cold and hot water. The pump(s) are connected to one pressure manifold and are laid out so that they can serve the system together or separately. The pump suction lines are connected to the crossover line between the tanks to allow the tanks to be drawn together or separately. Nr. 2 Electric hot water heater 100 l each with hot water professional pumps 380 V- 50Hz, 3Kw. Liquid level indicators on all water tanks. Nr. 1 Fresh water U.V. sterilizer brand IDROMAR mod. SH800 with sand filter. Nr. 1 500 Lt/h water making system IDROMAR –mod. MC125. Sanitary Discharge System: One or more tanks (Black and grey water) with a capacity of 1,290 gallons (4,800 liter), with shore pump out capability, and pre-plumbed pump for overboard discharge capability after chemical purification. One waste water treatment systems will be installed; brand: HAMMAN model Super Mini Plus. Liquid level gauges on both tanks. Moud tank will be equipped with professional electric 380V pump 0,55 Kw at 2950 rpm brand Gianneschi or similar. Windlass & Winches: Two professional anchors 380 Volts 7,5 Kw windlass with chain gypsy for 19 mm chain brand: Romagnoli Two Stern 380 Volts 5,5 Kw with inverter professional winches brand: Romagnoli. Bow Thruster: One professional Bow Thruster 380 Volts 50 Kw with joystick control unit on the pilothouse brand: Romagnoli. Tender Crane: One professional fully foldable telescopic knuckle type cranes with articulated boom: capacity 900 Kg at 5,5 mt. brand: HS Marine mod. AK7. Optional Remote controller. Hydraulic Gangways: One extensible hydraulic bridge brand: Besenzoni model: Premium Lux black color with dimensions: 3300 x 750 mm. One automatic bathing ladders with hydraulic movement will be installed in swim platform brand: Besenzoni model SI408 with Teak steps 850 mm wide. Air Conditioning and Heating System: The plant consist in nr. 1 water cooler block, with heat pump. The Fan coils shall be placed in the insulated rooms for water/air treatment. CONDARIA brand with 180.000 BTU/h capacity with U.T.A. for lower deck + 30 Kw boiler. The plant will be moniotrized from Automation plant on board. In general the best thermal hygrometric conditions shall be guaranteed in hot and cold waters. Sea Water Fire fighting system: In the yacht will be installed one 'Self Protection' system with two emergency professional pumps 380 Volts 3 phases, 4Kw at 20 mt with direct connection to Sea Chest or trough appropriate selection Valve trough Bildge tank. On board will be nr. 3 firefighting stations with hydrants and hoses UNI45 type. Fire Detection system: In the yacht will be installed nr. 8 smoke detection and one control detection system in Pilot House. CO2 Fire fighting system: In the yacht will be installed one 'CO2 fire-fighting system' with two 45 Kg CO2 bottles allocated in appropriate insulated room with fire door with direct access from engine room door. Nr. 1 remote station with emergency control for closing diesel supply and axial-fan in engine room. Nr. 6 CO2 jets in engine room.

Electrical Equipment

All electrical equipment located so as to be readily accessible for maintenance, repair or removal and is of a type proven satisfactory for marine use. All electrical equipment and wiring tested in accordance with applicable R.I.N.A. rules. Any and all drawings and schematics relevant to the system shall be furnished to the vessel owner. The installation shall be splash proof in the

interior and totally water proof at the exterior. All cables will be numbered and marked on the drawings. All the low tension cables and for radio frequencies are laid separately from those at 220/380 V, when it is not possible, the cables with the same degree of insulation are used.

Automation Plant: A state of the art Automation Plant will be installed on board with touch screen panel on Main Switch Board and LCD monitor in pilothouse. This Plant will control: Axial fans in engine room, Navigation lights, Bildge system, Fire-Fighting system, Diesel plant, liquid level gauges, Air conditioning, Generators parallel, Shore power, Sludge and Moud Pumps, open windows alarm. Diesel Generators: Two 380 V - 50 Hz Kohler 80 EFOZ - 80 kW, 100 kVA generators, in sound shield, with heat exchanger cooling, wet exhaust and exhaust separator AC/DC distribution panels in utility room, main deck and pilot house Two (2) 150 amp engine driven alternators. Aft shore power hook-up, with 125 amp 100' Glendinning cable with connector 380 Volts 3 phases with connection at the board transformer for constant voltage and isolation assurance. Will be provided also an automatic parallel with the shore power in order to have not black-out during the change of power from generators to shore power and vice versa. The Main switchboard with frontal access, Touch Screen monitor, constructed in steel or painted aluminum will be positioned in the engine room. Nr. 2 Chargers Mastervolt 220 Volts, 100 Amp for service batteries. Nr. 1 Chargers Mastervolt 220 Volts, 60 Amp for engines batteries. Batteries: Starting batteries for main engines and generators: Two (2) sets of batteries Mastervolt 24 Volts with a capacity of 225 Amps. Four (4) Set of batteries Mastervolt 24 Volts, in pilot house for electronics with converter and Services. Distribution Circuit: 380 V 50 Hz AC Three-phase circuit 220 V 50 Hz AC mono phase circuit 24 V DC Emergency circuit

Paintwork

Painting will be 'International Marine Paint'. All painted surfaces will be free of dust, runs and orange peel. System of cathodic protection: The system consist in a series of zincs placed in the hull, rudder and propeller cuff. Application paint is in accordance with International guidelines and product datasheets. Before application paint, all Steel surfaces will be clean, dry and Blast to near white metal SSPC-SP10 or Sa2.5 (ISO8501-1): UNDERWATER HULL:

Anticorrosive/abrasion resistant paint system, with high solids high performance antifouling
 Primer: Interprime 820 White – Interprime 450 Bronze and aluminum – Epoxy A/F Tiecoat grey
 Antifouling: Micron Extra black STEEL TOPSIDES: High performance scheme without fairing
 Primer: Interprime 820 White Coat: Interthane 990 White or black SUPERSTRUCTURES: High performance fairing and finishing scheme
 Primer: Epoxy GP coating White Filler: Interfill 830 Grey – Epoxy Finishing Filler Cream
 Primer: Interprime 820 Grey – Polyurethane Basecoat White Coat: Perfection White EXTERNAL DECKS: High performance epoxy scheme
 Primer: Epoxy GP Coating White Filler: Interfill 830 Grey
 Primer: Interprime 820 Grey ENGINE ROOM, LOCKERS, TECH SPACES: Epoxy anticorrosive scheme, with polyurethane finish
 Primer: Interior Primer 860 White/Grey Coat: Interior Finish 750 RAL BILGES, VISIBLE AREAS WET, STEEL: Epoxy anticorrosive scheme, with polyurethane finish
 Primer: Interior Primer 860 White/Grey Coat: Interior Finish 750 RAL INTERIORS, BEHIND LININGS: Epoxy anticorrosive scheme, with polyurethane finish
 Primer: Interior Primer 860 White/Grey

Navigation & communication equipment

Nr. 4 Monitor FURUNO LCD 19" Color MU-190HD Nr. 1 Bronze Eco Sounder FURUNO 1 KW B258 Nr. 1 Digital fish finder FURUNO DFF1 Nr. 1 Radar Furuno FAR-2117 Black Box with ARPA Nr. 1 Navnet 3D FURUNO MFDBB Nr. 1 Navnet 3D control unit MCU-001 Nr. 1 Radar Open Array 6 KW 64 Mg. FURUNO Nr. 1 Radar Open Array Radiator FURUNO 6.5 FT. Nr. 1 Hub Ethernet FURUNO Nr. 1 PC Digital Yacht and Sw MAXSEA FURUNO Nr. 1 MaxSea Keyboard Nr. 1 Maps NAVNET FURUNO 3D Raster Nr. 1 GPS FURUNO GP-33 Nr. 1 Autopilot ANSCHULTZ Nautopilot NP-60 integrated interface with ZF Rudderpropeller Nr. 1 Satellite Compass FURUNO M. SC-50 Nr. 2 Remote Display Unit RD-33 Nr. 1 Meteo Station FURUNO FR WS-200 Nr. 1 AIS Trasponder FURUNO FA-50 CLASS B Nr. 2 VHF FURUNO FM-4721 DSC Nr. 1 NAVTEX FURUNO NX-300 Nr. 2 Cameras AXIS FURUNO Nr. 1 Satellite Antenna Intellian TV SAT 16P (Europe) Nr. 1 Box Antenna Intellian Nr. 1 Search light 24 Volts Nr. 1 Magnetic Compass RIVIERA 6" Nr. 2 Controls for Main Engines Nr. 1 Control for bow thruster Nr. 2 Controls for generators Nr. 1 LCD Control for Sliding Wipers. Nr. 1 Control for Water making Idromar Nr. 1 monitor Touch Screen for Automation plant Nr. 1 Stereo with speakers

Deck

EXTERIOR DECK SPECIFICATIONS: The handrails realized in polished AISI 316 with a diameter of about 36 mm or 52 mm. The external Stairs will also be equipped with handrails in polished AISI 316. Security and service handrails will be realized wherever necessary. The external decks will be covered with Natural Teak thickness 14 mm with a reasonable uniformity of the color. The external stairs will also be covered with the same product. Ceilings in wood with high gloss surface. The yacht will be equipped with a 300 mm heavy duty rubber fender for hull protection. Windows and Porthole: Lower deck Nr. 16 fixed portholes in naval steel diam. 300 mm with tempered glass and polished stainless steel glass list and security aluminum cover painted white. On request some portholes can be open type with alarm sensor on Automation plant. Main Deck and Upper Deck Nr. 16 Windows with sealed glass Dark grey color thickness glass 10 mm. Pilothouse Nr. 7 fixed windows with tempered glass and polished stainless steel glass list thickness 12 mm. Three of these windows will be equipped with anti fog electric heater. Nr. 4 Sliding professional wipers with touch screen panel with fresh water washing. Nr. 1 CVS (Clear View Screen). Exterior Accessories: Fly-bridge Nr. 1 large aluminum sundeck with cushions. Nr. 2 large settee with L shape with cushions. Nr. 1 aluminum with color fridge station with corian doors and natural teak cover. Courtesy LED lights on sundeck and settee. Nr. 1 outlet high pressure fresh water wash down system. Nr. 1 shower with cold and hot water. Nr. 2 cleats for flags. Nr. 2 doors with steering locks for funnel access. Mast for electronics, radar, search light, horn and navigation lighting. Audio system speakers and volume control. Inox 316 Rub rail. Oversized Scuppers inox AISI 316 with Ocean king logo for drainage. Upper Deck/Pilothouse Two (2) access doors in pilothouse with steering locks. One (1) access doors in lounge cabin with steering locks. One prep station with corian top, refrigerator, grill and sink. Two round Teak tables. Two removable cradles for tender. One wood settee with cushions. Three deckchairs with cushions. Audio system speakers and volume control. Inox 316 Rub rail. Two (2) outlet high

pressure fresh water wash down system. Oversized Scuppers inox AISI 316 with Ocean king logo for drainage. One fire fighting station UNI 45. One ladder with teak steps for access to Fly-bridge. One ladder with teak steps for access to Main deck. One ladder with teak steps for access to Bow – windlass area. Windlass area Two (2) horizontal 380 V anchor windlass, w/chain stoppers and claws. Two (2) 225 Kg anchors and 250 Mt. 19 dim. Chain steel grade U1. Hatch to self draining stainless steel anchor locker. Two (2) large double horn stainless steel mooring bollards. One polished stainless steel mooring bollard ‘commercial look’ at bow. Four (4) fairleaders in galvanized steel. Two (2) valves for chain high pressure washing. One fire fighting station. One stainless steel ladder from windlass area to chain and bow thruster rooms. Two (2) electric fans for ventilation in Bow Thruster room and Chain room. Main Deck Inox 316 Rub rail. One Corian Shoes rack with teak cover. Aft deck Dining table in natural teak with stainless steel support. One outlet high pressure fresh water wash down system. One emergency station with controls. Deck fills for fresh water inlet. Two access doors from main deck to Crew area with steering lock. One access door to main saloon with steering lock. One access door to engine room with steering lock. One steel ladder from main deck to engine room. Teak 180 mm hand rails on all bulwarks. Bulwark gates port and starboard. One integrated steel sofa with cushion. One extensible hydraulic gangway. Oversized Scuppers inox AISI 316 with Ocean king logo for drainage. Swim Deck One big aluminum swim platform with teak cover. One hydraulic boarding swim ladder. Hot and cold fresh water shower. One access door watertight to garage. Two (2) single horn SS mooring bollards in Swim Platform.

Interior

LOWER DECK Owner Stateroom · Wall covering: Brushed oak or another essence · Oak flooring or another essence · Wall wardrobe · Oak furniture or another essence · TV LCD da 46” · King size bed with recessed LED in headboard · Ceiling in wood eco-leather cover with LED Spot
 Owner Bath · Wall covering: Brushed oak or another essence · Oak flooring or another essence · Oak furniture or another essence with corian top · Sanitary (Wc and Bidet) · Corian Shower · Shower covering in ceramic Marazzi brand · Ceiling in wood eco-leather cover with LED Spot
 Two Guest Suites · Wall covering: Brushed oak or another essence · Oak flooring or another essence · large Oak wardrobe or another essence · TV LCD da 24” · Two large beds in brushed oak or another essence · Ceiling in wood eco-leather cover with LED Spot · Oak doors or another essence with LED Spot
 Two Guest Baths · Wall covering: Brushed oak or another essence · Oak flooring or another essence · Oak furniture ivory color or another essence · Sanitary · Corian Shower · Shower covering in mosaic · Ceiling in wood eco-leather cover with LED Spot
 VIP Suite · Wall covering: Brushed oak or another essence · Oak flooring or another essence · large oak wardrobe or another essence · TV LCD da 24” · Two large beds in brushed oak or another essence or Queen size bed · Ceiling in wood eco-leather cover with LED Spot · Oak doors white color or another essence
 VIP Bath · Wall covering: Brushed oak or another essence · Oak flooring or another essence · Oak furniture ivory color or another essence · Sanitary · Corian Shower · Shower covering in mosaic · Ceiling in wood eco-leather cover with LED Spot
 MAIN DECK Main Salon · Wall covering: Brushed oak or another essence · Oak flooring or another essence · Oak brushed furniture ivory color or another essence · TV LCD da 46” · Extensible

glass dining table brand 'Cattelan Italia Azimut' · Chairs brand 'Maxalto People Semplice Collection' · Relax area with sofa brand 'B&B Italia Fat Sofà' or similar · Ceiling in wood eco-leather cover with LED Spot · Wall lights brand 'Foscarini Caboche' Galley · Wall covering: Brushed oak or another essence; Cooking area with stainless steel wall covering · Oak flooring or another essence · Inox wall hood brand 'Scholtès HPF 90' or similar · Inox sinks 400 x 400 mm brand 'Scholtès L8351F' or similar · Two induction plates brand 'Scholtès B80I' or similar · Two Refrigerator side-by-side with inox cover · Dishwasher brand 'Scholtès LTE 14-3211' or similar · Multifunction oven brand 'Scholtès FN 66T XA' or similar · Multifunction Microwaves brand 'Scholtès SMW1' or similar · LED Spot Laundry/utility room · Wall covering in laminate · Storage wardrobes in laminate · Two washer brand 'Ariston Aqualtis AQ9F' · Washer/Dryer brand 'Ariston AQM8D' · Dryer brand 'Ariston TCL631' Crew Area · Wall covering in laminate · Storage in laminate · Oak flooring or another essence · TV LCD da 24" · Baths with laminate furniture and recessed sinks UPPER DECK Lounge · Wall covering: Brushed oak or another essence · Oak flooring or another essence · Oak brushed furniture or another essence · Wardrobes · TV LCD 40" · large settee with bed brand 'Flexform Winny' · Ceiling in wood eco-leather cover with LED Spot Lounge Bath · Wall covering: Brushed oak or another essence · Oak flooring or another essence · Oak furniture ivory color or another essence · Sanitary · Corian Shower · Shower covering in mosaic · Ceiling in wood eco-leather cover with LED Spot Captain cabin · Wall covering: Brushed oak or another essence · Oak flooring or another essence · large oak wardrobe with drawers · TV LCD 24" · Large bed in brushed oak or another essence · Access door directly to Pilothouse · Ceiling in wood eco-leather cover with LED Spot Captain Bath · Wall covering: Brushed oak or another essence · Oak flooring or another essence · Oak furniture ivory color or another essence · Sanitary · Corian Shower · Shower covering in mosaic · Ceiling in wood eco-leather cover with LED Spot Pilot House · Wall covering: Brushed oak dark gray or brown color with wood inserts polished light gray or brown color · Wood accent: coated oak color light gray or light brown · Oak flooring light gray color · Helm station in brushed oak, opaque coating, dark gray or brown color · Furniture in brushed oak, opaque coating, dark gray or dark brown color · One helm chair brand 'Besenconi P219 President' · Two single seat companion chairs Besenconi P219 President · Large settee in leather 11. LIGHTING Interior Lighting All interior lighting will be realized with LED technology brand BCM or equivalent except of Crew areas. Owner and VIP suites, main saloon, upper deck and pilothouse lighting will be equipped with dimmer. On beds and wardrobes will be apply recessed LED lights for a total of 200 mt of strips led. Nr. 100 spot LED lights square type brand BCM mod. 3317-3308 Nr. 20 spot LED lights round type brand BCM mod. 3369-3283 Underwater lighting On stern will be installed nr. 8 Underwater LED lights with RGB technology at 36 LED brand ASTEL mod. Equator SSPM External lighting Nr. 60 spot LED lights on ceiling brand ASTEL mod. Intesa Nr. 90 Courtesy LED lights brand ASTEL mod. Arcus Nr. 10 Spotlights with inclination setting on Upper Deck and Solarium Deck brand ASTEL mod. Reflector Nr. 30 m Strips LED under sundeck and external furnitures

Optional

· Fully fairing luxury yacht standard High Gloss for hull. · Professional Bow Thrust 75 Kw brand

ZF (HRP) in package with Rudder propeller for Dynamic positioning. · Dinamic positioning system ZF with joystick. · One Rodriguez system SMS-2150 Active and Zero-Speed stabilizer fins. · One professional fully foldable telescopic knuckle type cranes with articulated boom: capacity 2200 Kg at 6,5 mt. brand: HS Marine mod. AK10. · One Jacuzzi pool model Profile dim. 239 x 211 x 93 cm for five peoples with teak ladder and polished stainless steel handrail. · Conversion system for 110 volt 60 Hz available for U.S.A. · Tender Grady White 209 Escape with 1x1F50 Yamaha.

Delivery package

Fenders & fender lines (6). Flare kit, 6 whistles, Ship's bell, & Distress Flag. Mooring lines (8). Zincs and Antifouling bottom paint. First aid kit. Portable fire extinguishers throughout the boat. Safety package for unrestricted navigation >50 mg. Fuel filters for main engines and generators. Spare parts, miscellaneous electrical and plumbing fittings. 100 ft. cord for dockside electric connection. Portable air horn. CE certification package "A class". Technical files with diagrams, owner manual and instruction to the captain Selling price is EXW Company, North East Adriatic Sea unless otherwise specified.

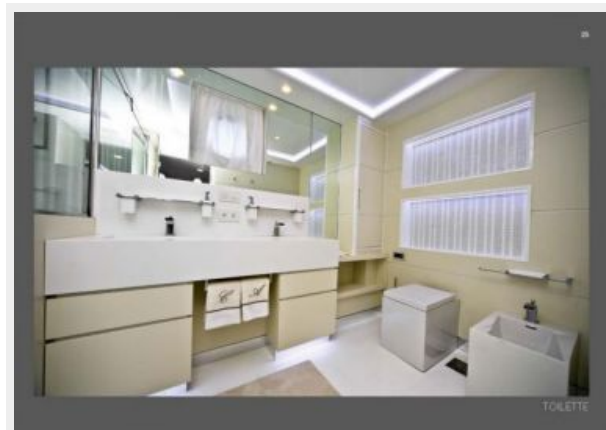
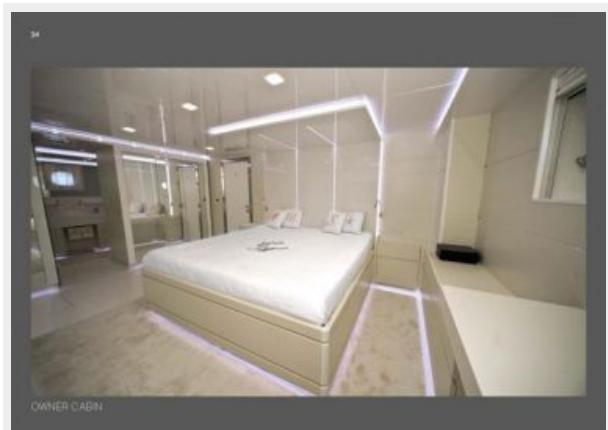
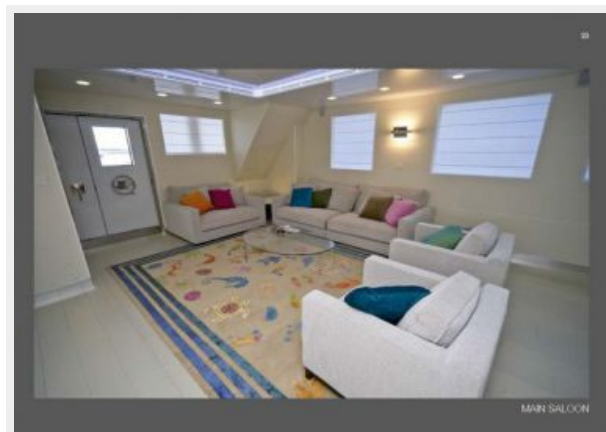
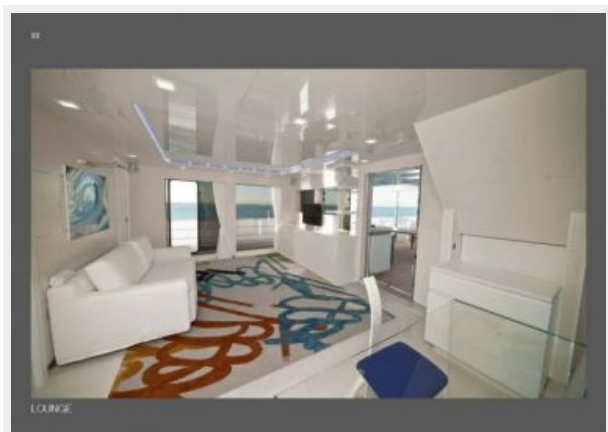
Исключения

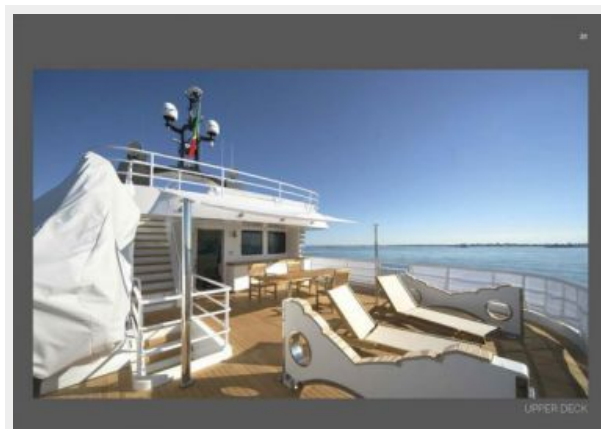
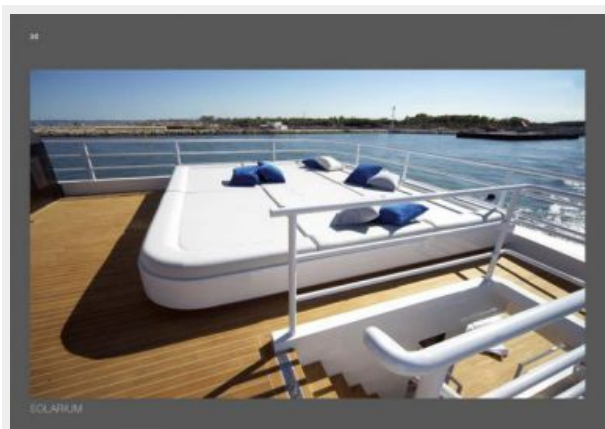
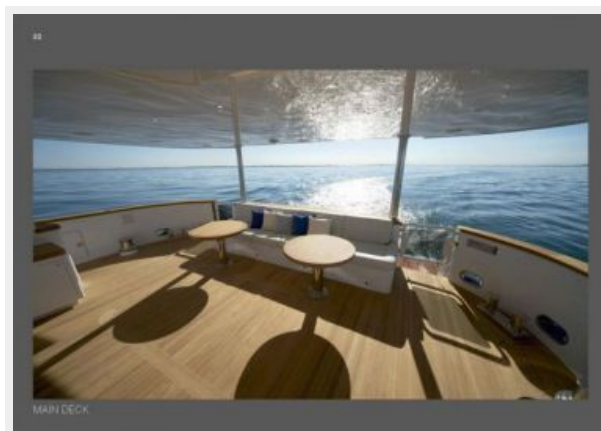
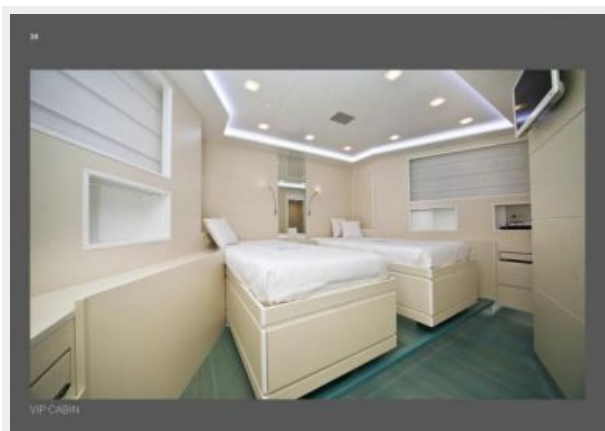
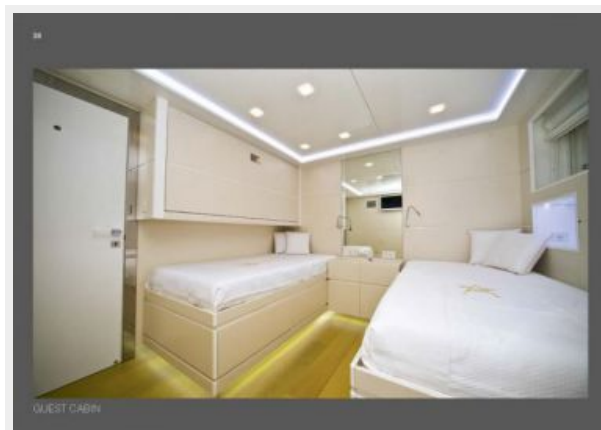
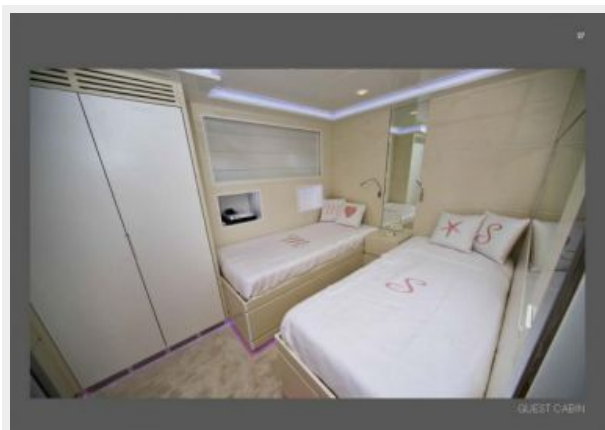
При продаже яхты исключаются личные вещи владельца, личное оборудование, включая список предметов личного пользования владельца яхты, но не ограничиваясь гидроциклами, катерами, сибоб, снаряжением для рыбалки и дайвинга если таковые имеются на момент заключения сделки.

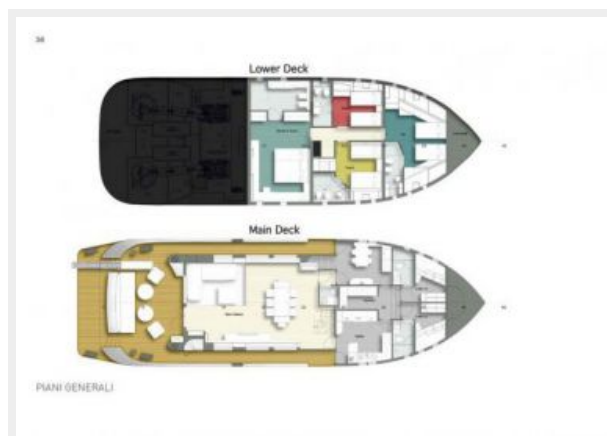
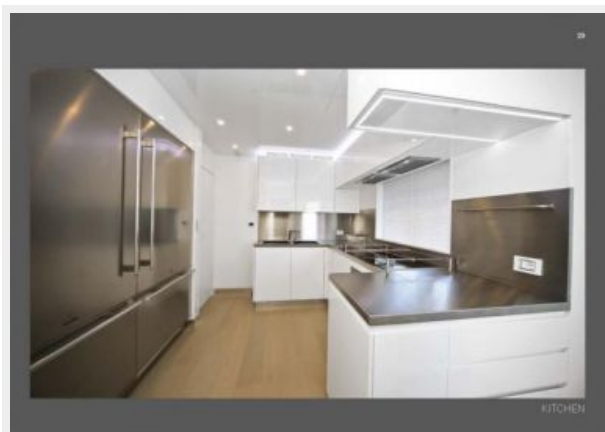
Отказ от ответственности

Компания предоставляет описание судна или яхты добросовестно, но не может гарантировать точность этой информации, а также не ручается за техническое состояние. Покупатель должен проинструктировать своих агентов или оценщиков исследовать представленную информацию более подробно, по собственному желанию. Продажа судна или яхты, изменение цены или снятие с продажи будет происходить без предварительного уведомления.

ФОТОГРАФИИ







КОНТАКТЫ

Андрей Шестаков (Andrey Shestakov) – ведущий яхтенный брокер отдела продаж яхт и судов компании Atlantic Yacht and Ship Inc. Официальный представитель Atlantic Yacht and Ship Inc. для русскоговорящих клиентов в центральном офисе компании в Майами/Форт Лодердейл/Флорида/США.

Контактная информация

Email: info@atlanticyachtandship.ru

Web: www.atlanticyachtandship.ru

Телефоны

Бесплатный звонок по России: **8 800 234-4456**

Москва и Московская область: **+7 495 766-6268**

Краснодарский край: **+7 918 465-6644**

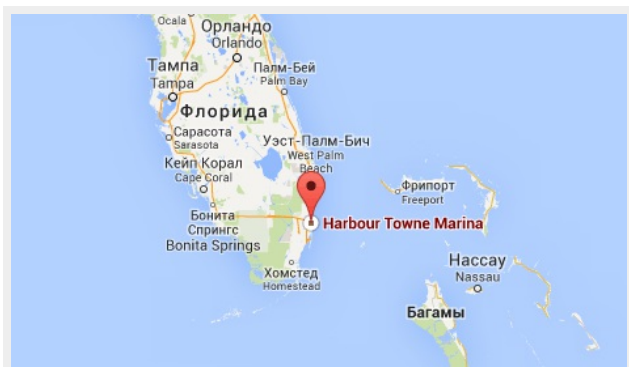
США, Майами, Флорида: **+1 954 274-4435**

Время работы

Понедельник – Суббота: **9:00 - 21:00**
EDT

Воскресенье: **Закрито**

Адрес



Harbour Towne Marina, 850 NE 3rd St,
STE 213, Dania, FL 33004