



64 PERSHING — PERSHING



Builder: [PERSHING](#)

Year Built: 2010

Model: High Performance

Price: ~~1 300 000 € EUR~~ Off the market

Location: Italy

LOA: 64' 0" (19.51m)

Cruise Speed: 40 Kts. (46 MPH)

Max Speed: 46 Kts. (53 MPH)

Our experienced yacht broker, Andrey Shestakov, will help you choose and buy a yacht that best suits your needs **64 Pershing — PERSHING** from our catalogue. Presently, at Atlantic Yacht and Ship Inc., we have a wide variety of yachts available on our sale's list. We also work in close contact with all the big yacht manufacturers from all over the world.

If you would like to buy a yacht **64 Pershing — PERSHING** or would like help answering any questions concerning purchasing, selling or chartering a yacht, please call **+1 954 274-4435**

TABLE OF CONTENTS

TABLE OF CONTENTS	2
SPECIFICATIONS	3
Overview	3
Basic Information	3
Dimensions	3
Speed, Capacities and Weight	3
Accommodations	3
Hull and Deck Information	4
Engine Information	4
PHOTOS	5
CONTACTS	12
Contact details	12
Telephones	12
Office hours	12
Address	12

SPECIFICATIONS

Overview

LOW HOURS . EXCELLENT CONDITION LIKE NEW . MOTIVATED . BRING OFFERS.

Atlantic Yacht and Ship is America's oldest and most respected supplier of power & custom motor yachts. We specialize in the brokerage of quality Motor Yachts, Sport Fisherman, Express Cruisers, and Trawlers. Incorporated in 1959, with over 53 years of continued service within the yachting industry and community, Atlantic Yacht and Ship is committed to providing unparalleled product knowledge and meticulous attention to detail.

Our services include : Brokerage , Charters, New Construction , Surveys and Sea Trials, CE Certification ,Worldwide Yacht Transport, Yacht Transfers, Maintenance and Service , Dockage, Electrical Power Conversions, Marine Documentation , Offshore Registration, Finance and Insurance.

Basic Information

Category: High Performance

Model Year: 2010

Year Built: 2010

Country: Italy

Dimensions

LOA: 64' 0" (19.51m)

Speed, Capacities and Weight

Cruise Speed: 40 Kts. (46 MPH)

Max Speed: 46 Kts. (53 MPH)

Displacement: 92815 Pounds

Water Capacity: 238 Gallons

Fuel Capacity: 925 Gallons

Accommodations

Total Cabins: 3

Total Heads: 3

Hull and Deck Information

Hull Material: Composite Fiberglass

Hull Color: White

Engine Information

Engines: 2

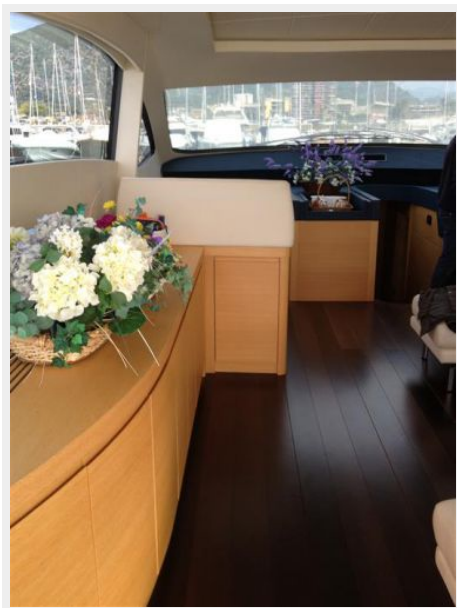
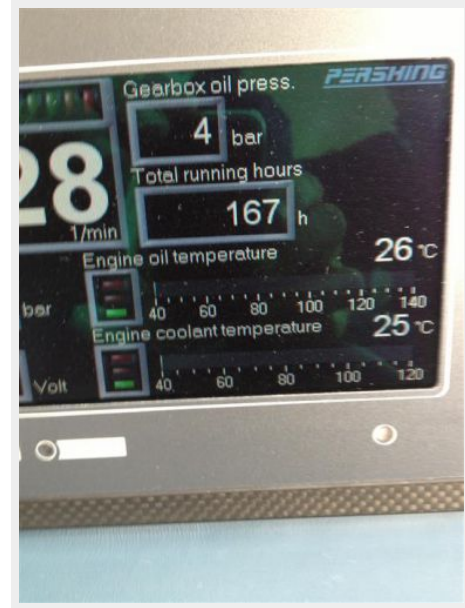
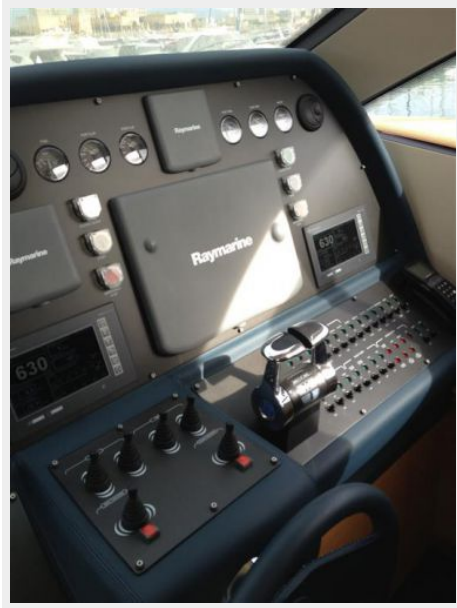
Manufacturer: MAN

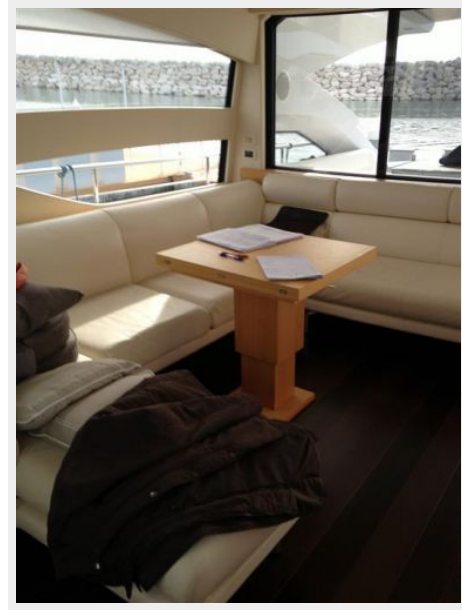
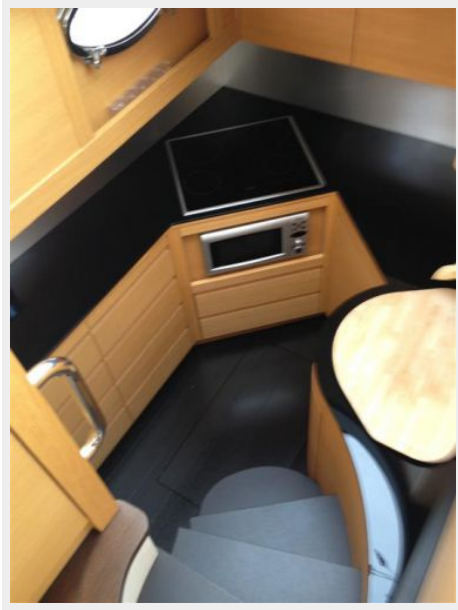
Model: V12 1550

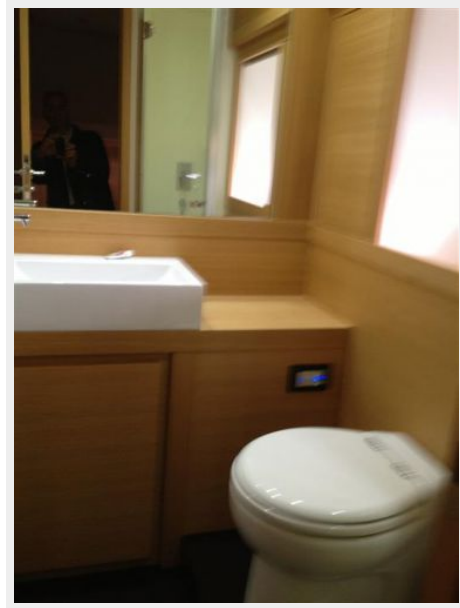
Engine Type: Inboard

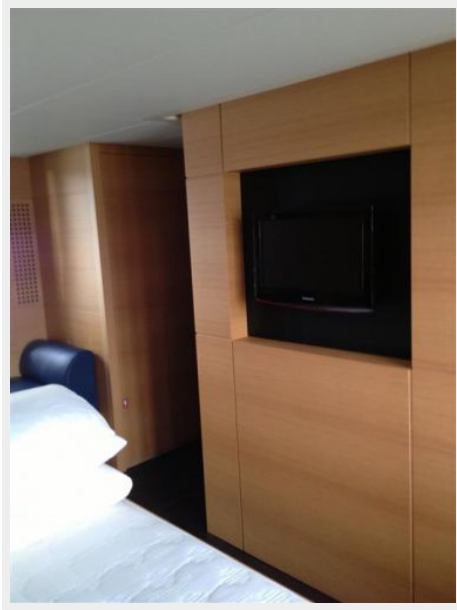
Fuel Type: Diesel

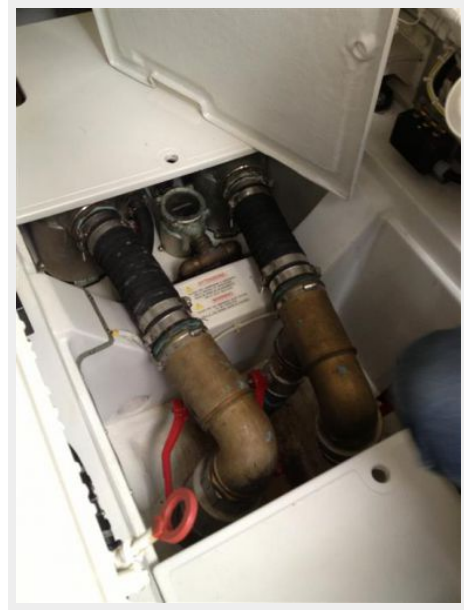
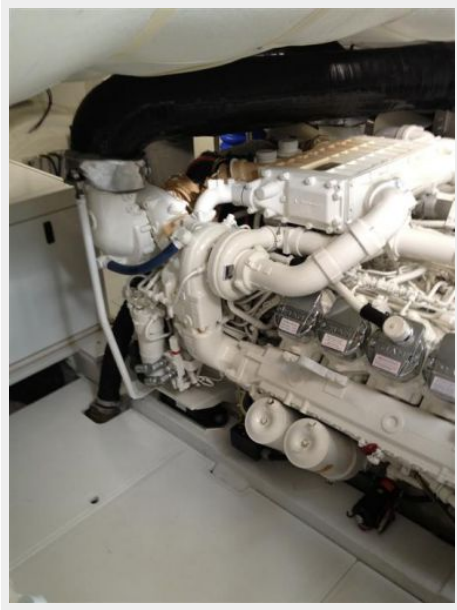
PHOTOS

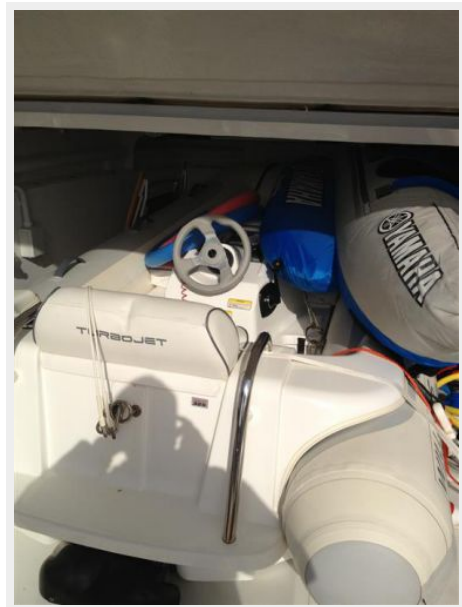














CONTACTS

Andrey Shestakov, leading yacht broker of the sales department of Atlantic Yacht and Ship Inc. Atlantic Yacht and Ship Inc., the official representative of the Miami/Fort Lauderdale FL headquarters.

Contact details

Email: info@atlanticyachtandship.ru

Web: www.atlanticyachtandship.ru/en/

Telephones

USA: +1 954 274-4435

RUS: +7 495 766-6268

Office hours

Monday – Saturday: **9:00 - 21:00** EDT

Sunday: **closed**

Address



Harbour Towne Marina, 850 NE 3rd St,
STE 213, Dania, FL 33004