



BONE ONE 7 — CRUISERS



Builder: CRUISERS

Year Built: 2006

Model: Cruiser

Price: ~~\$379,000 USD~~ Off the market

Location: United States

LOA: 52' 0" (15.85m)

Beam: 15' 6" (4.72m)

Min Draft: 3' 8" (1.12m)

Our experienced yacht broker, Andrey Shestakov, will help you choose and buy a yacht that best suits your needs **Bone One 7 — CRUISERS** from our catalogue. Presently, at Atlantic Yacht and Ship Inc., we have a wide variety of yachts available on our sale's list. We also work in close contact with all the big yacht manufacturers from all over the world.

If you would like to buy a yacht **Bone One 7 — CRUISERS** or would like help answering any questions concerning purchasing, selling or chartering a yacht, please call +1 954 274-4435

TABLE OF CONTENTS

TABLE OF CONTENTS	2
SPECIFICATIONS	3
Overview	3
Basic Information	3
Dimensions	3
Speed, Capacities and Weight	3
Accommodations	3
Hull and Deck Information	3
Engine Information	4
DETAILED INFORMATION	5
Cruisers 52	5
Exclusions	8
Disclaimer	8
PHOTOS	9
CONTACTS	15
Contact details	15
Telephones	15
Office hours	15
Address	15

SPECIFICATIONS

Overview

"Bone One 7" is a one owner, freshwater kept boat that has been maintained by a knowledgeable owner. Detailed every 90 days, she is spotless.

Bow Thruster, TNT Hydraulic Lift, SAT TV, New Eisinglass Enclosure, and low original hours on upgraded D-12 Volvo's make her the nicest on the market. Please click full specs for more detailed information.

Basic Information

Category: Cruiser

Model Year: 2006

Year Built: 2006

Country: United States

Dimensions

LOA: 52' 0" (15.85m)

Beam: 15' 6" (4.72m)

Min Draft: 3' 8" (1.12m)

Clearance: 13' 1" (3.99m)

Speed, Capacities and Weight

Displacement: 42000 Pounds

Water Capacity: 150 Gallons

Holding Tank: 75 Gallons

Fuel Capacity: 500 Gallons

Accommodations

Total Cabins: 2

Hull and Deck Information

Hull Material: Fiberglass

Engine Information

Engines: 2

Manufacturer: Volvo

Model: D12

Engine Type: Inboard

Fuel Type: Diesel

DETAILED INFORMATION

Cruisers 52

Vessel Walkthrough

Spacious two stateroom layout! Full Beam Master with a private ensuite head with stall shower. VIP Guest Stateroom is forward with a Queen Island Berth. The guest head can be accessed from the VIP or the Salon and includes its own stall shower. The extremely large and inviting Salon and Dinette opens up to a fully appointed galley. 6' 6" headroom throughout makes for a large volume yacht!

- Ultraleather upholstery
- Cherry Cabinetry
- Solid Surface Countertops
- 6'6" Headroom
- Abundant Storage Areas
- Washer/Dryer

Salon

"Bone One 7" features an extremely large and spacious salon/ galley area that provides the perfect place to entertain and relax. She has had very little use since new, and the carpets have never been without the original runners. She is in fantastic condition!

- Large crescent-shaped Ultra Leather Flexsteel sectional sofa with recliners and seating for up to 8
- Cherry wood cabinetry throughout
- Cherry wood folding leaf coffee/dinette table
- Nova Kool under counter Refrigerator/Freezer
- Princess 2 Burner Electric Cooktop Stove
- Sharp Microwave/Convection Oven
- Black & Decker Coffee Maker
- Fisher Paykel Drawer Dishwasher
- Central Vac
- Sharp 30" LCD Flatscreen TV
- Sony DVD Player
- KVH SAT TV
- Splendide Washer/Dryer (Master Stateroom closet)

Master Stateroom

The Master Stateroom is located aft and is "full beam" with private ensuite head and separate stall shower.

- Centerline Queen Berth
- Decorator bed coverings and shams
- Cherry wood cabinetry with great storage
- Entertainment Center with Sharp 20" Aquos LCD Flatscreen TV, Blaupunkt DVD Player, Sony Stereo with MP3
- Ensuite Head area with separate stall shower
- Tecma Electric Toilets

Stateroom - Forward

The VIP stateroom is located forward with its own private access to the Day head.

- Center Line Queen Berth
- Cherrywood cabinetry with abundant storage
- Sharp Flatscreen TV with Sole DVD Player
- Decorator Bed Spread and Pillow Shams
- Cedar lined lockers

Electrical

- Onan 13 KW Generator
- (2) Charles 30 AMP Battery Chargers
- Battery Parallel Switch
- Glendenning 50 AMP Cablemaster
- 125/250V AC System
- 12/24V DC System
- Electrical Outlets

Deck

- Hard top with skylight and twin opening hatches.
- Stainless steel windshield frame.
- Center walk-thru windshield with hand rail.
- Stamoid Bimini and Mask.
- Extended aft Bimini top.

- Stamoid Cockpit curtains.
- Hardtop Cockpit awning.
- Air conditioned Helm and Cockpit with reverse cycle.
- Instrumentation console.
- (2) Adjustable high back Captain's Chairs with armrests and bolsters.
- Large L-shaped companion Helm lounge to port.
- Very large U-shaped Cockpit lounge aft with storage below.
- Fiberglass Cockpit table top with fold-up wings and drink holders.
- Cockpit U-Line refrigerator/ ice maker.
- Cockpit Wet Bar console to port with hot/ cold sink, electric grill, bottle storage and trash chute
- AM/FM/CD stereo, subwoofer, amp.
- JL Speakers throughout
- Cockpit entertainment center with Flat Screen TV
- Removable snap-in carpeting.
- Cockpit washdown system.
- 120V Outlet.
- Abundant storage.
- Jabsco remote spotlight.
- Exterior courtesy lighting.
- Navigation lighting.
- Foredeck sun lounge cushions.
- Anchor wash down system.
- Maxwell 1200 windlass.
- Polished stainless Anchor roller
- Anchor and Rode
- Force 10 Electric Grill

Engine Room

- Twin Volvo Diesel Engines; very accessible engine room with access from cockpit
- ZF Transmissions
- Sea Star Hydraulic Steering
- Side Power Bow Thruster
- Bennett Trim Tabs
- Reverso Oil Change System (Engines and Generator)
- 20 gallon Hot Water Heater
- Techma Quietflush Toilets
- Macerator and Holding tank
- Fireboy Fire Suppression System
- Dripless Shaft Seals

Exclusions

Owner's personal belongings. Owner's personal toys, including but not limited Jet-skis, Tenders, Sea Bobs, Fishing & Diving equipment.

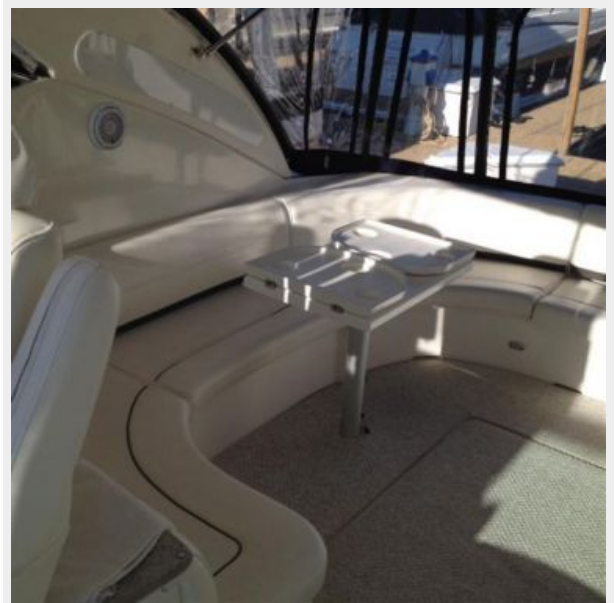
Disclaimer

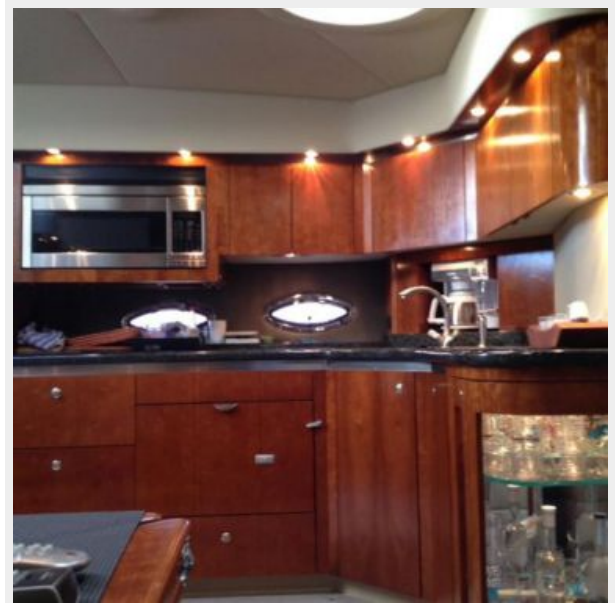
The Company offers the details of this vessel or yacht in good faith but cannot guarantee or warrant the accuracy of this information nor warrant the condition of the vessel. A buyer should instruct his representatives, agents, or his surveyors, to investigate such details as the buyer desires validated. This vessel or yacht is offered subject to prior sale, price change, or withdrawal without notice.

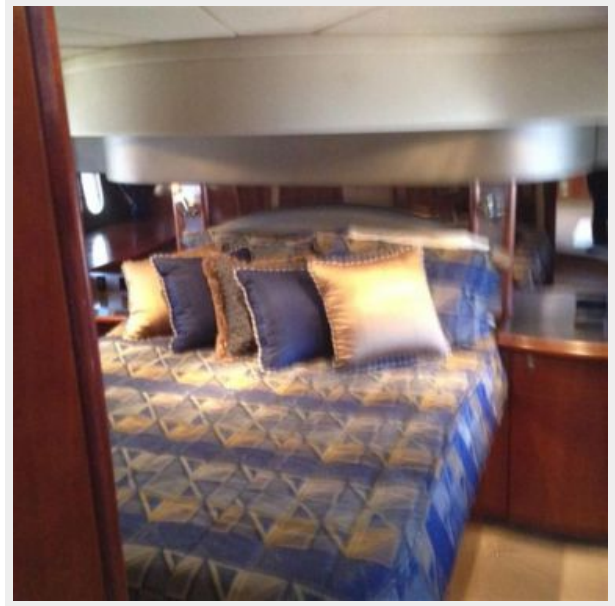
PHOTOS

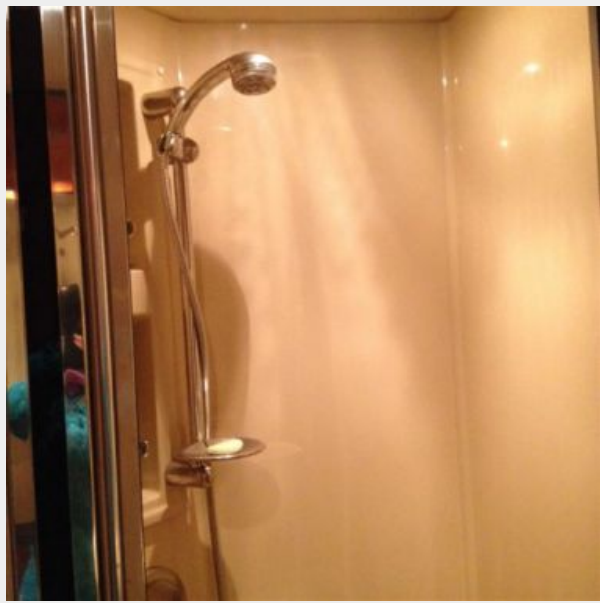












CONTACTS

Andrey Shestakov, leading yacht broker of the sales department of Atlantic Yacht and Ship Inc. Atlantic Yacht and Ship Inc., the official representative of the Miami/Fort Lauderdale FL headquarters.

Contact details

Email: info@atlanticyachtandship.ru

Web: www.atlanticyachtandship.ru/en/

Telephones

USA: +1 954 274-4435

RUS: +7 495 766-6268

Office hours

Monday – Saturday: **9:00 - 21:00** EDT

Sunday: **closed**

Address



Harbour Towne Marina, 850 NE 3rd St,
STE 213, Dania, FL 33004