



## PEARL 80 — PEARL MOTOR YACHTS



**Судостроитель:**

PEARL MOTOR YACHTS

**Год постройки:** 2018

**Модель:** Моторная яхта

**Цена:** ЦЕНА ЯХТЫ ПО ЗАПРОСУ

**Местонахождение:** United States

**Длина общая:** 80' 0" (24.38m)

**Ширина:** 19' 6" (5.94m)

**Макс. осадка:** 5' 0" (1.52m)

**Крейс. скорость:** 25 Kts. (29 MPH)

**Макс. скорость:** 35 Kts. (40 MPH)

Купить PEARL 80 — PEARL MOTOR YACHTS а также выбрать подходящую вам яхту из нашего каталога яхт вам поможет опытный яхтенный брокер Андрей Шестаков. На сегодняшний день компания Atlantic Yacht and Ship Inc. имеет большое количество яхт в собственном списке продаж, а также тесно сотрудничает со всеми крупными яхтенными производителями по всему миру.

Для того чтобы купить яхту PEARL 80 — PEARL MOTOR YACHTS а также проконсультироваться по любому вопросу связанному с покупкой, продажей, чартером яхт позвоните по телефону **8 800 234-4456** (бесплатно по РФ).

# ОГЛАВЛЕНИЕ

ОГЛАВЛЕНИЕ	2
ХАРАКТЕРИСТИКИ	3
Обзор	3
Основная информация	3
Размеры	3
Скорость, вместимость и масса	3
Размещение	4
Корпус и палуба	4
Информация о двигателе	4
ПОДРОБНОЕ ОПИСАНИЕ	5
Introduction	5
Audio & Visual Equipment	5
Electronics & Navigation Equipment	6
Galley Appliances	7
Mechanical	7
Electrical Equipment	8
Deck and Hull	9
Исключения	10
Отказ от ответственности	10
ФОТОГРАФИИ	11
КОНТАКТЫ	19
Контактная информация	19
Телефоны	19
Время работы	19
Адрес	19

# ХАРАКТЕРИСТИКИ

## Обзор

### TRADES CONSIDERED

**ORIGINALLY \$4,450,000 - NOW OFFERED AT SPECIAL DEALER DEMO PRICING \$3,699,000!**

Reflecting our owners needs and desires, the PEARL 80 brings together sumptuous space with luxurious styling and outstanding levels of comfort. Add to the impressive maneuverability, a class beating flybridge, a jet ski garage and a hydraulic bathing platform and you have a yacht that will have our competitors reaching for the drawing board.

## Основная информация

**Тип судна:** Моторная яхта

**Модельный год:** 2018

**Год постройки:** 2018

**Страна:** United States

## Размеры

**Длина общая:** 80' 0" (24.38m)

**Длина палубы:** 78' 5" (23.90m)

**Ширина:** 19' 6" (5.94m)

**Макс. осадка:** 5' 0" (1.52m)

## Скорость, вместимость и масса

**Крейс. скорость:** 25 Kts. (29 MPH)

**Макс. скорость:** 35 Kts. (40 MPH)

**Водоизмещение:** 110231.131 Pounds

**Вместимость воды:** 330 Gallons

**Вместимость сточного бака:** 78 Gallons

**Объем топливного бака:** 1165 Gallons

## Размещение

---

Всего кают: 4

Всего ком. состава: 4

Каюты экипажа: 2

Спальных мест экипажа: 2

Комм. состав экипажа: 1

## Корпус и палуба

---

Материал корпуса: Fiberglass

## Информация о двигателе

---

Двигатели: 2

Производитель: MAN

Модель: V 12

Тип двигателя: Inboard

Тип топлива: Diesel/Electric

# ПОДРОБНОЕ ОПИСАНИЕ

## Introduction

The 80 Pearl Flybridge Motor Yacht is designed and engineered by naval architect Bill Dixon. The 80 Pearl décor is a work of art by designer Kelly Hoppen. Her striking salon is extra-roomy with an open plan that looks through the port-side galley all the way to the helm windows forward. Balance and harmony are key elements with geometric-patterned linen standing out against the neutral background. White marble contrasts darker walnut wood.

Below deck, the 80 Pearl features 4 staterooms, including a roomy Master Stateroom and VIP. The twin guest staterooms have windows facing the corridor which allow light to penetrate the entire space.

Not only does she boast sexy lines and a gorgeous interior, but also the 80 Pearl Flybridge Motor Yacht comfortably and effortlessly cruises at 25 knots. This 80 Pearl sports 1,800-hp MAN V12s, the most powerful of the engine options. Wide open, the Pearl 80 exceeds 35 knots, even with a full tank of water and 60 percent fuel.

Additionally, the 80 Pearl features a huge fly bridge with hard top, a stern garage, a hydraulic platform, and crew quarters for 2 with head and shower stall.

## Audio & Visual Equipment

### Exterior

- 1 x Fusion MS- IP&00i Stereos fitted at lower helm.
- 1 x Fusion MS- BT200 Bluetooth module fitted to the FUSION MS - IP700i stereo to enable bluetooth audio streaming from a compatible Apple, Windows, BlackBerry or other Bluetooth compatible media device.
- 4 x pairs of 6" Fusion MS FR6021 external marine speakers fitted to the cockpit, foredeck, radar arch and the flybridge.
- 3 x Fusion NRX200i remote controls, one fitted in the cockpit, upper helm and one fitted on the foredeck.
- Intellian i6PE satellite TV system with auto skew & Intellian i6 dome, also dummy dome **(Optional)**
- TV Status Aerial
- AM/FM aerial (Pacific LR pro-series 2.5m)

### Helm/Galley/dining area

- 1 x Fusion MS - IP700i Stereo fitted at helm.
- 1 x Fusion MS - BT200 Bluetooth module fitted to the FUSION MS- IP700i stereo to enable bluetooth audio streaming from a compatible Apple, Android, Windows, BlackBerry or other

Bluetooth compatible media device.

- 1 pair of 5" Marine AV speakers, fitted to the lower helm and dinette areas. Model: - MAV05ROU. (N.B. speakers to be colour coded to material used on panels.)
- 1 x Fusion AM702 Marine zone amplifier

### Salon/Owners Cabin

The salon is fitted with the latest Samsung 40" Series 6 Smart 3D Full HD LED TV. A Harman Kardon 5.1 3-D Blu-ray Disc receiver is combined with a powerful amplifier, with 5"x5" speakers fitted in the ceiling. The saloon area benefits from a Bluetooth audio receiver which is named to this area and can easily be paired to any device which streams audio over Bluetooth and is connected to the Harman Kardon. A Technomate satellite decoder is fitted with HD 1080p & 3D Ready. The satellite receiver is connected to a Intellian i6 satellite dish.

### Forward Cabin

The Forward Cabin is fitted with the latest Samsung 40" Series 6 Smart 3D Full HD LED TV. A Harman Kardon 2.1 3-D Blu-ray Disc receiver is combined with a powerful amplifier. The Forward cabin area benefits from a Bluetooth audio receiver named to this cabin which can be easily paired to any device which streams audio over Bluetooth and is connected to the Harman Kardon. A Technomate satellite decoder is fitted with HD 1080p & 3D Ready. The satellite is connected to a Intellian i6 satellite dish. with x 5' speakers fitted in the ceiling.

### Starboard/Port Cabin/Crew Cabin

These cabins have slim line 22" Samsung TV's fitted and they are connected to a 2.1 surround sound Blu-ray DVD system. There is a Bluetooth receiver named to each cabin which can be easily paired to any device which streams audio over Bluetooth and is connected to the 2.1 surround sound system. with 2 x 5" speakers fitted in the ceiling of each cabin.

## Electronics & Navigation Equipment

- 4 screen Raymarine/Garmin color radar/plotter/GPS
- GARMIN GPSMAP 8015, Worldwide, multi-function chart (1 at lower helm)
- GARMIN GPSMAP 8015 multi-station displays, worldwide with AIS (1 at lower helm 2 at upper helm)
- GARMIN GMR Xhd 4' Open array antenna
- GARMIN GMR 4kW Pedestal xHD
- GARMIN GMI 20 Marine Instrument Display
- GARMIN VHF 300i with one GHS 10i remote& active speaker
- GARMIN Transducer, N2k DST 800, Thru-Hull
- GARMIN GC 10, CCTV Marine Camera (1 in engine room) integrated into GPSMAP
- GARMIN GC 10, CCTV Marine Camera (1 cockpit, 1 transom, 1 saloon)
- GARMIN GHS 10i VHF Fixed at upper helm
- GARMIN GHP 20 Auto pilot and Speed depth.

- Compass - Ritche flush mount 4.5" dial (upper & lower helm)
- VHF aerial (Pacific LR pro-series 2.5m)
- Garmin camera system connected to 8015 screens. Supporting x4 cameras.
- E-plex touch screen elec control system
- LCD TVs throughout linked to central server
- Integrated audio system
- CCTV cameras
- Tank level monitoring via i-Pad
- Jabsco search light 60233-0524 233SL 24V with dual station controls
- Kahlenberg horn D-OA chrome finished, dual trumpet air horn with dual station control

## Galley Appliances

---

- 1 x Miele KM611 Stove Top
- 1 x Miele H5080BM Microwave combination oven
- 1 x Fisher & Paykel DD60SHTI6 Dishwasher
- 1 x Miele DA3060 Extractor hood
- 1 x Vitrofrigio DW180.2DT Fridge & freezer
- 1 x Vitrofrigio DW180.2RT Twin fridge
- 1 x Miele WT2780 Washer/Dryer in crew
- Electronically operated wall panel on an UP/DOWN lifter unit to allow an open plan galley/salon layout
- Pearl crockery, cutlery and towel suite

## Mechanical

---

- Twin MAN V12 1800hp on shaft drive
- Electronic engine controls
- Manual fuel shut off valves located in the stbd side cockpit locker and clearly labeled for each engine and generator
- Seakeeper SK16 Gyro stabilizer
- Side Power SE210/240TC bow thruster, 24VHydraulic
- Side power SE210TC stern thruster, 24V with 250mm dia stern thruster tunnel & 2x8940G dual joystick (bow& stern) controls
- Humphree Trim Tabs HA0750 Interceptors
- Tropical air conditioning upgrade
- 4 x Marine Air AT18VHZ-FC/AIR 18,000 BTU Air handlers
- 1 x Marine Air AT12VHZ-FC/AIR 12,000 BTU Air handlers
- 4 x Marine Air AT9VHZ-AIR 9,000 BTU Air handlers
- 1 x Marine Air P711 Circulation pump
- 4 x Marine Air CHC24SRCZ50 chiller units
- Aqua fresh Watermaker AFD 800 AC 12ltrs per hour (Optional)

- 1 x Sea-Fire FD1450M
- 1 x Sea-Fire FD1000M
- Engine Room Fire Extinguishers
- Sea Fire linked to the engine room extraction fans, intake fans, de-misters and the engine ignitions
- Torrid water heater MV40/220V 40gal Double heat exchanger unit
- JABSCO hot water circulation pumps 59510-0012
- 6 x Rule 12, 2000 GPH 24v automatic bilge pump system fitted with high water level alarms and overrides switches at each helm. (from E/S)
- 1 x Rule 12, 2000 GPH 24v automatic bilge pump, fitted to protect the stern thruster compartment.
- 1 x Jabsco 29270-0000, 100 litres/minute manual bilge pump in the engine room
- 5 x Tecma silence plus systems fed to 2 holding tanks or direct overboard via diverter valve on seacock.
- 2 x 78 litre Tex Tank holding tanks
- 3 x Jabsco 50890-1100 Waste pumps
- 2 x 38 mm breather pipes with charcoal removable filters.
- Tyribe Deck pump out 09014 with 38mm pipe
- Sealand Holding tank filters 30931005
- Jabsco Vented loops 29015-0010
- 5 x Tecma Sanispit 24V connected to shower and sink units

## Electrical Equipment

- Kohler 20 EFOZD, 20kw generator, 230v AC, 50 Hz
- Glendinning Shorepower, GLEKAQUOO7 24V
- 2 x Victron Phoenix 24v, 25 amp battery charger, c/w temperature sensor. (6kg) (PCH024025001)
- 2 x Victron Blue Power 12 volt 7 amp battery charger - IP65 - single output - 200-265vac input- (BPC012007100)
- 4 x Victron 12vdc AGM deep cycle batteries @ 220AH each = 880ah @ 24vdc, engine start batteries for main engines
- Two banks of 4 x Victron 12vdc AGM deep cycle batteries @ 220AH each = 1760ah @24vdc, service batteries
- 2 x Victron 12vdc AGM deep cycle batteries @150AH each,= 300 ah @ 24vdc, bow thruster battery 7 forward winch battery
- 1 x Victron 12vdc AGM deep cycle sealed 100AH Stbd generator start battery
- 1 x Victron 12 vdc AGM deep cycle sealed 100AH port generator start battery
- 6 x Mc Duff 12kg sacrificial anodes connected to ships bonding system
- Individual sacrificial anodes for Bow/ stern thruster, Shafts or IPS Pods, and bathing platform hydraulic lifters and bathing platform ladder
- E-Plex AC/DC electrical control system via i-Pad
- Touch panel lighting control system



## Deck and Hull

---

- Teak decks fitted to cockpit, bathing platform, and flybridge
- Lewmar anchor winch V6 with 75M of 14mm stainless steel
- 50kg Lewmar Delta anchor stowed on bow roller
- LEWMAR 30Kg Delta or equivalent (Stainless steel) supplied loose on board with 50m of rope
- 2 x Lewmar capstan winches 1250 w, C3 24V
- Cover set for Aft deck, flybridge and screen
- Open cell foamed external upholstery
- Glendinning cablemaster
- In-Port fresh water connection
- 1 x Trend Marine pop out galley side door
- 1 x Trend Marine pop out crew cabin entrance side door
- 1 x Trend Marine electrically operated Patio door
- 1 x Trend Marine custom made flybridge windscreen
- Windscreens, side deck and flybridge floor glass by Trend Marine
- Bonded glass portlights and opening Port lights by Trend Marine
- Rear docking lights
- 4 x Limishore Underwater lights surface mount FMx100-W
- Hella Marine LED navigation lights
- Hepworth Windshield wipers, Exalto 250 motors with BS Pantograph 900-1200mm arms
- 6 10" x 26" inflatable black PVC fenders with 3 metres of black line spliced to them
- 4 x 50' 3/4" dock lines
- 1 x Telescopic boat hook
- 1 x Hose
- 1 x Letter box type telescopic swimming ladder fitted to the bathing platform
- Reboarding ladder fitted to the bathing platform
- 2 x coats of International Grey Primocon antifoul primer
- 3 x coats of International Trilux 33 white antifoul

### Aft Deck/Swim Platform

- H&B Technics of Germany hydraulically operated bathing platform
- Garage with H&B Technics of Germany hydraulic door and launch system
- Whale Twist swim shower
- Extending Hydraulic Passarelle
- Aft deck seating area with teak table
- Nemo Marine electrically operated S/Steel framed Patio Door

### Foredeck

- Foredeck seating area with teak table and Bimini
- Bimini on foredeck with stainless fold away frame
- 1 x Lewmar 70 Forward cabin flush hatch fitted with mosquito screen and shade

## Flybridge

- Flybridge hard top with Makefast electric sunroof
- 2 x teak tables
- Hot Tub with LED lit waterfall feature
- 1 x Gaggenau VR421 electric BBQ
- 1 x Webasto CR49 drinks fridge
- 1 x Webasto 5W08A11CE0000 Icemaker
- 1 x Coolbox custom build by PMY
- 1 x Sink with Hot & Cold water tap.
- 1 x Trend marine custom made flybridge hatch

## Исключения

---

При продаже яхты исключаются личные вещи владельца, личное оборудование, включая список предметов личного пользования владельца яхты, но не ограничиваясь гидроциклами, катерами, сибоб, снаряжением для рыбалки и дайвинга если таковые имеются на момент заключения сделки.

## Отказ от ответственности

---

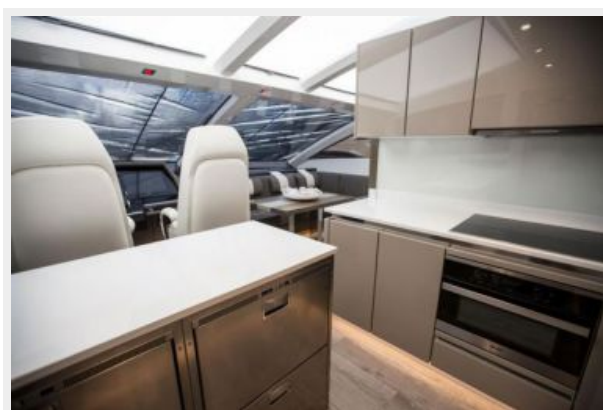
Компания предоставляет описание судна или яхты добросовестно, но не может гарантировать точность этой информации, а также не ручается за техническое состояние. Покупатель должен проинструктировать своих агентов или оценщиков исследовать представленную информацию более подробно, по собственному желанию. Продажа судна или яхты, изменение цены или снятие с продажи будет происходить без предварительного уведомления.

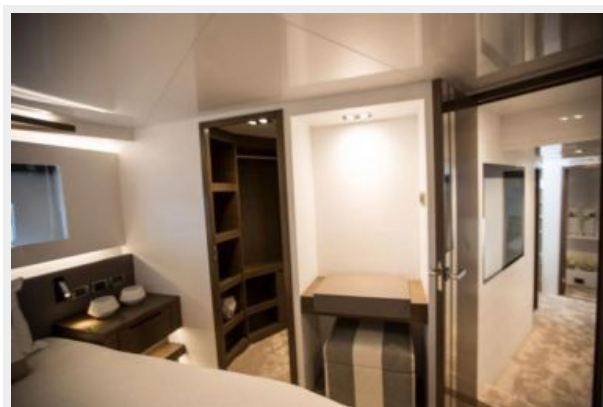
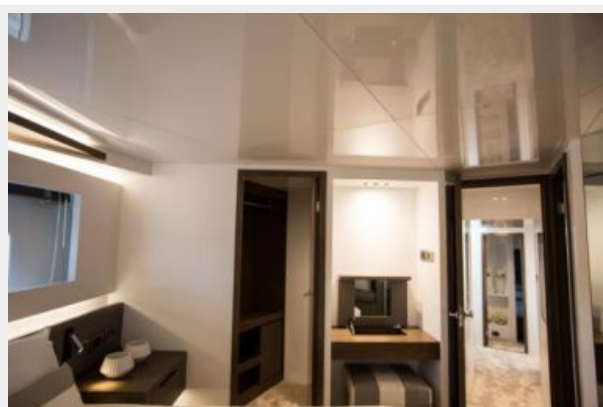
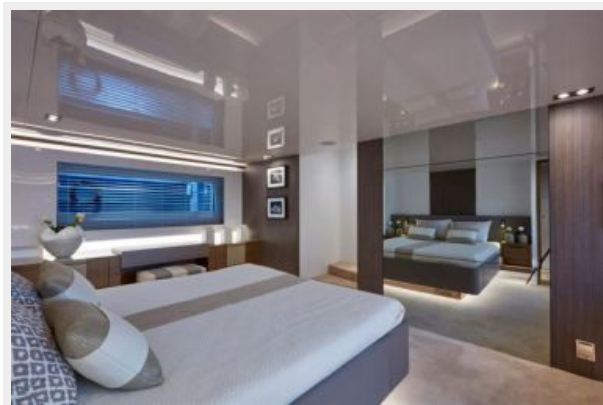
# ФОТОГРАФИИ





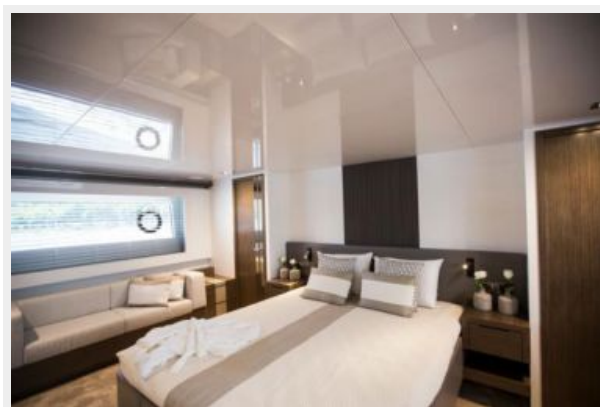














# КОНТАКТЫ

---

Андрей Шестаков (Andrey Shestakov) – ведущий яхтенный брокер отдела продаж яхт и судов компании Atlantic Yacht and Ship Inc. Официальный представитель Atlantic Yacht and Ship Inc. для русскоговорящих клиентов в центральном офисе компании в Майами/Форт Лодердейл/Флорида/США.

## Контактная информация

---

Email: [info@atlanticyachtandship.ru](mailto:info@atlanticyachtandship.ru)

Web: [www.atlanticyachtandship.ru](http://www.atlanticyachtandship.ru)

## Телефоны

---

Бесплатный звонок по России: **8 800 234-4456**

Москва и Московская область: **+7 495 766-6268**

Краснодарский край: **+7 918 465-6644**

США, Майами, Флорида: **+1 954 274-4435**

## Время работы

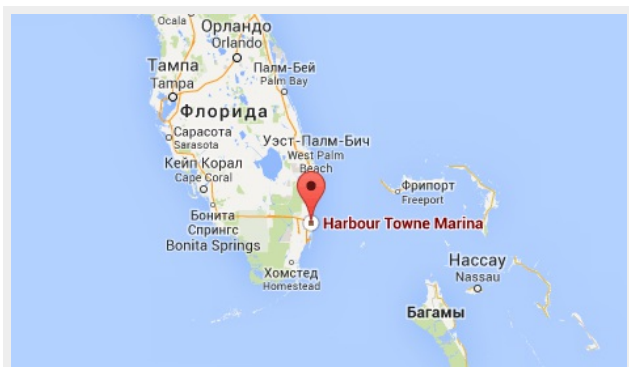
---

Понедельник – Суббота: **9:00 - 21:00**  
EDT

Воскресенье: **Закрито**

## Адрес

---



Harbour Towne Marina, 850 NE 3rd St,  
STE 213, Dania, FL 33004