



MIGHT AS WELL — OCEAN YACHTS



Судостроитель: [Ocean Yachts](#)

Год постройки: 2015

Модель: Катер для спортивной рыбалки

Цена: ЦЕНА ЯХТЫ ПО ЗАПРОСУ

Местонахождение: United States

Длина общая: 64' 0" (19.51m)

Ширина: 18' 8" (5.69m)

Макс. осадка: 4' 4" (1.32m)

Крейс. скорость: 33 Kts. (38 MPH)

Макс. скорость: 41 Kts. (47 MPH)

Купить MIGHT AS WELL — Ocean Yachts а также выбрать подходящую вам яхту из нашего каталога яхт вам поможет опытный яхтенный брокер Андрей Шестаков. На сегодняшний день компания Atlantic Yacht and Ship Inc. имеет большое количество яхт в собственном списке продаж, а также тесно сотрудничает со всеми крупными яхтенными производителями по всему миру.

Для того чтобы купить яхту MIGHT AS WELL — Ocean Yachts а также проконсультироваться по любому вопросу связанному с покупкой, продажей, чартером яхт позвоните по телефону **8 800 234-4456** (бесплатно по РФ).

ОГЛАВЛЕНИЕ

ОГЛАВЛЕНИЕ	2
ХАРАКТЕРИСТИКИ	5
Обзор	5
Основная информация	5
Размеры	5
Скорость, вместимость и масса	5
Размещение	6
Корпус и палуба	6
Информация о двигателе	6
ПОДРОБНОЕ ОПИСАНИЕ	7
Accommodations	7
Master Stateroom, Forward Port	7
Master Head	7
VIP Stateroom, Forward	8
Guest Stateroom, Forward Port	8
Guest Head, Forward Starboard	8
Crew Stateroom, Aft	9
Crew Head	9
Salon	9
Galley, Main Deck, Amidship Port	10
Helm / Electronics and Navigation	10
Tuna Tower / Electronics and Navigation	11
Deck	11
Engine and Mechanical Equipment	12
Electrical System / Equipment	12
Cockpit / Fishing Equipment	13
Exclusions	13
Salesman's Comments	13

Исключения	13
Отказ от ответственности	14
ФОТОГРАФИИ	15
Profile 2	15
Profile 3	15
Master Head	15
Master Stateroom	15
Guest Head	16
VIP Stateroom	16
Circular Staircase to Crew Stateroom	16
Salon 1	16
Salon 3 - Entertainment System	17
Salon 2	17
Galley	17
Helm / Electronics & Navigation 1	17
Helm / Electronics & Navigation 3	18
Helm / Electronics & Navigation 2	18
Helm / Electronics & Navigation 4	18
Helm / Electronics & Navigation 5	18
Helm / Electronics & Navigation 7	19
Helm / Electronics & Navigation 6	19
Tuna Tower	19
Deck 1 - Bow	19
Deck 2 - Tower	20
Deck 3 - Bridge Seating	20
Deck 4 - Port Bridge Seating	20
Deck 5 - Bridge Seating	20
Deck 6 - Helm Seats	21
Deck 7 - Forward Bridge Storage	21

Deck 9 - Port Bridge Rod Locker	21
Deck 8 - Bridge Refrigerator	21
Deck 10 - Starboard Bridge Rod Locker	22
Engine & Mechanical Equipment 1 - Engine Room	22
Engine & Mechanical Equipment 2 - Engine Room	22
Engine & Mechanical Equipment 3	22
Engine & Mechanical Equipment 4	22
Engine & Mechanical Equipment 5	22
Engine & Mechanical Equipment 6 - Forward Pump	23
Engine & Mechanical Equipment 7 - Forward Pump	23
Engine & Mechanical Equipment 8 - Bow Thruster	23
Cockpit / Fishing Equipment 1	23
Cockpit / Fishing Equipment 2	23
Cockpit / Fishing Equipment 3	23
Cockpit / Fishing Equipment 4	24
Cockpit / Fishing Equipment 5	24
Cockpit / Fishing Equipment 6 - Teaser Reels	24
Rear Profile 1	24
Rear Profile 2	25
КОНТАКТЫ	26
Контактная информация	26
Телефоны	26
Время работы	26
Адрес	26

ХАРАКТЕРИСТИКИ

Обзор

The Makaira was conceived by the legendary Leek family. She was designed by Applied Concepts to be rugged yet pretty. The Makaira was built to chase any offshore species where ever they lived. She is fast, comfortable and good looking. Her noteworthy features include CAT C32A's w/ 360 joystick control, (2) Mitsubishi 175T Gyros, great electronics and a great interior layout with beautiful walnut and sycamore cabinetry! HER OWNERS PLANS HAVE CHANGED. MAKE OFFERS!!!

Основная информация

Тип судна: Катер для спортивной рыбалки

Подкатегория: Convertible

Модельный год: 2015

Год постройки: 2015

Страна: United States

Верх: Hardtop W/Tower

Кубрик: Да

Размеры

Длина общая: 64' 0" (19.51m)

Ширина: 18' 8" (5.69m)

Макс. осадка: 4' 4" (1.32m)

Скорость, вместимость и масса

Крейс. скорость: 33 Kts. (38 MPH)

Крейсерская скорость поворота: 1850 Kts.

Макс. скорость: 41 Kts. (47 MPH)

Водоизмещение: 85000 Pounds

Вместимость воды: 270 Gallons

Объем топливного бака: 1690 Gallons

Размещение

Всего кают: 4

Всего коек: 8

Спальные места: 8

Всего ком. состава: 3

Корпус и палуба

Материал корпуса: Fiberglass

Материал палубы: Teak

Комплектация корпуса: Modified V-Hull

Цвет корпуса: Axelseal Charcoal Grey

Дизайнер корпуса: Applied Concepts

Информация о двигателе

Двигатели: 2

Производитель: Caterpillar

Модель: C32A

Тип двигателя: Inboard

Тип топлива: Diesel

ПОДРОБНОЕ ОПИСАНИЕ

Accommodations

Sleeps eight owners and guests in four Staterooms for a total of eight berths. One Master Head with shower, one Guest Head with shower and one Crew Head with shower. Step into the Salon from the starboard side of the Cockpit to find a very open Main Cabin. A large U-shaped settee is to port, an extensive entertainment system and wet bar to starboard. Step up into the Country-style Galley / dinette forward in the Main Cabin. Follow the curved staircase starboard to find the Master Stateroom with en-suite Head to port. Continue forward to the VIP Guest Stateroom forward with en-suite Head access and a Guest Stateroom to port. Take the circular stairwell from the Galley to access the Crew Stateroom and Laundry below.

Master Stateroom, Forward Port

Beautifully decorated Master Stateroom with gorgeous walnut cabinetry and en-suite Head.

- Mirror
- Chest
- Carpeting
- Night stand
- 32" LED TV
- Queen berth
- Ample storage
- Hanging locker
- Under bed drawer
- Entertainment center
- Wall-mounted sconces
- Crestron Media System
- En-suite Head w/ shower
- Gorgeous walnut cabinetry
- Tray ceiling w/ indirect lighting
- Upgraded innerspring mattress
- Air conditioning / heater with controls
- Stereo system w/ CD player, speakers

Master Head

- Shower
- Wallpaper
- Exhaust fan
- Medicine cabinet

- Custom tile flooring
- Wallpaper borders
- Sink w/ granite vanity top
- Vacu-flush, overboard, recirculating, electric head w/ holding tank

VIP Stateroom, Forward

- Cabinets
- Night stand
- 26" LED TV
- CO2 Detector
- Reading lights
- Under bed drawer
- Under bed storage
- Crestron Media System
- Upgraded innerspring mattress
- En-suite Head w/ shower access
- Direct & indirect lighting w/ dimmers
- Air conditioning / heater with controls
- Stereo system w/ CD player, speakers
- Overhead Bomar hatch w/ screen & shade
- Step-up island Queen berth w/ great storage

Guest Stateroom, Forward Port

- Carpeting
- Wallpaper
- 9" LED TV
- CO2 Detector
- Reading lights
- Hanging locker
- Under bed storage
- Crestron Media System
- Direct & indirect lighting
- Upgraded innerspring mattresses
- Air conditioning / heater with controls
- Stereo system w/ CD player, speakers
- Extra wide Upper & lower cross-over berths

Guest Head, Forward Starboard

- Shower
- Wallpaper
- Exhaust fan
- Medicine cabinet
- Custom tile flooring
- Sink w/ granite vanity top
- Vacu-flush, overboard, recirculating, electric head w/ holding tank

Crew Stateroom, Aft

Step down the circular stairwell to find the Crew's Quarters. En-suite Head and Laundry. Extra wide upper & lower berths.

- TV
- Closet
- Cabinets
- Carpeting
- Wallpaper
- En-suite Head w/ shower
- Stereo system w/ speakers
- Extra-wide upper & lower berths
- Air conditioning / heater with controls
- Entertainment center w/ Crestron Media System

Crew Head

- Shower
- Wallpaper
- Exhaust fan
- Medicine cabinet
- Custom tile flooring
- Sink w/ granite vanity top
- Vacu-flush, overboard, recirculating, electric head with holding tank

Salon

Very large Salon features a Sony 55" TV, Crestron Media System, Electronically operated Hunter Douglass silhouette blinds, gorgeous walnut interior cabinetry and trim, Majilite suede headliner throughout, Dewberry style leather sofa, indirect lighting, direct lighting w/ dimmers and designer flooring in Salon entry.

- Dinette

- Storage
- Wet bar
- Cabinets
- Paneling
- Carpeting
- Rug runner
- Cocktail table
- Indirect lighting
- Telephone jack
- Cable TV hookups
- Pop-up 55" Sony TV
- Crestron Media System
- Majilite Suede headliner
- Direct lighting w/ dimmers
- Designer tile flooring in Salon entry
- Air conditioning / heater with controls
- Dewberry-style leather sofa w/ storage below
- Stereo system w/ CD player, Cassette player, speakers
- Electronically operated Hunter Douglass silhouette blinds

Galley, Main Deck, Amidship Port

Wide open Galley features top of the line appliances, Granite counter tops and great storage!

- Sink
- Water heater
- Insta hot water
- Lots of storage
- Trash compactor
- Garbage disposal
- Custom tile flooring
- Granite counter tops
- Central vacuum system
- Two-burner, electric stove
- Sub-Zero, drawer-style freezers
- Microwave oven / Convection oven
- Sub-Zero, drawer-style refrigerators
- Pressure, manual fresh water system
- Clothes washer & clothes dryer (located outside Crew's Quarters, below Deck)

Helm / Electronics and Navigation

- 5" Compass

- Net Gear Wifi
- KVH Trac Phone
- Furuno Sea temp
- Furuno FA50 AIS
- Maretron Interface
- FB 150 SAT Phone
- Sirius SAT Weather
- Furuno GP 330B GPS
- Furuno DFF3 Fish finder
- Furuno BBW X2 Weather
- CA 200B 2kW Transducer
- Furuno 25kW 96nm Radar
- (3) Garmin Video Cameras
- Furuno TZ Touch Black box
- FLIR M-324 XP Night Vision
- Furuno GP 330B GPS / Plotter
- KVH Trac Vision M5G SAT TV
- Furuno NAV Pilot 711 Auto pilot
- (3) 19" KEP Touch Glass monitors
- Furuno RD30 Speed & distance logs
- (2) Icom 604 VHF Radios w/ scramblers
- Furuno MM3 - V90 - GPO 3-D Bahamas Raster Charts

Tuna Tower / Electronics and Navigation

- Icom Command Mic
- Furuno 711 Remote Pilot
- Furuno NAV NET TZ Touch 9

Deck

- EPIRB
- Tuna Tower
- Transom door
- Cockpit cover
- Bridge curtain
- Spreader lights
- (6) Life jackets
- Navigation lights
- Viking 8-man raft
- Anchor w/ 250' lines
- Refrigerated drink box

- Electric drop down radio box
- Lewmar V4 Electric windlass
- (3) Release Trillion Helm seats
- Air condition on Bridge & Mezzanine
- Teak Decks, Mezzanine & covering boards
- Single, fixed, electric search light w/ remote control
- Fresh water, salt water, pressure Deck wash down system

Engine and Mechanical Equipment

- Fire alarm
- Fume detector
- Trolling valves
- Racor Fuel filters
- (2) Bilge blowers
- Bennett Trim tabs
- Fuel prime pumps
- Oil pressure alarm
- Oil transfer system
- Fire control system
- Fresh water cooling
- Under water exhaust
- Hydraulic bow thruster
- CAT Extended warranty
- Engine temperature alarm
- Engine fuel shut-off valve
- CAT Engine synchronizers
- Reverse cycle air conditioner
- Thermal, acoustical insulation
- Bridge, Tower engine controls
- (1) Y-valve emergency bilge pump
- (6) Automatic, manual bilge pumps
- Sea Recovery 1400gpd. Water maker
- Power Assist hydraulic, wheel steering
- CAT Three 60 Precision Control System
- Twin Disc Quick Shift / 1:74 Transmission
- (2) Mitsubishi 175T AR6 Gyros stabilizers
- Sea Chest Engine Room Ventilation System
- CO2, Halon, automatic, manual fire extinguisher
- Twin 1925 hp. Diesel I/B 2014 CAT C32A's w/ 834 hrs.

Electrical System / Equipment

- (8) Batteries
- Dockside cables
- Battery parallel switch
- 12v, 24v DC Electrical system
- 110v, 220v AC Electrical system
- Automatic, manual battery charger
- CAT C2.2 21.5kW Generator w/ 620 hrs.
- CAT C2.2 21.5kW Generator w/ 650 hrs.

Cockpit / Fishing Equipment

- Bait well
- Bait freezer
- Tuna Tower
- Live fish well
- (6) Rod holders
- Rupp Center rigger
- Mezzanine freezers
- Refrigerated fish box
- Eskimo E1540D Ice maker
- Rupp Bigg Rigg Outriggers
- (6) Rod holders in haunches
- Release Trillion Fighting chair
- 8-Rod Rocket launcher (aft Bridge rail)
- (2) MIYA - EPOCH US #9 HD Teaser reels

Exclusions

- Owner's personal gear and items

Salesman's Comments

The Makaira was conceived by the legendary Leek family. She was designed by Applied Concepts to be rugged yet pretty. The Makaira was built to chase any offshore species where ever they lived. She is fast, comfortable and good looking. Her noteworthy features include CAT C32A's w/ 360 joystick control, (2) Mitsubishi 175T Gyros, great electronics and a great interior layout with beautiful walnut and sycamore cabinetry! HER OWNERS PLANS HAVE CHANGED. MAKE OFFERS!!!

Исключения

При продаже яхты исключаются личные вещи владельца, личное оборудование, включая список предметов личного пользования владельца яхты, но не ограничиваясь гидроциклами, катерами, сибоб, снаряжением для рыбалки и дайвинга если таковые имеются на момент заключения сделки.

Отказ от ответственности

Компания предоставляет описание судна или яхты добросовестно, но не может гарантировать точность этой информации, а также не ручается за техническое состояние. Покупатель должен проинструктировать своих агентов или оценщиков исследовать представленную информацию более подробно, по собственному желанию. Продажа судна или яхты, изменение цены или снятие с продажи будет происходить без предварительного уведомления.

ФОТОГРАФИИ

Profile 2

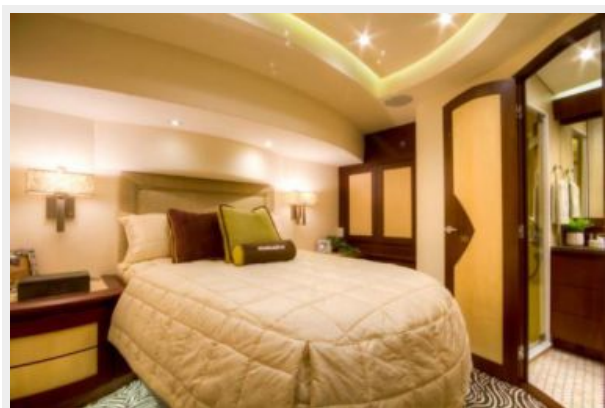


Profile 3



Master Head

Master Stateroom



VIP Stateroom



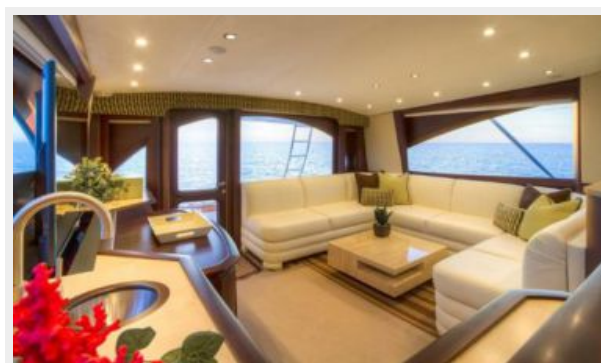
Guest Head



Circular Staircase to Crew Stateroom



Salon 1



Salon 2



Salon 3 - Entertainment System



Galley



Helm / Electronics & Navigation 1



Helm / Electronics & Navigation 2



Helm / Electronics & Navigation 3



Helm / Electronics & Navigation 4



Helm / Electronics & Navigation 5



Helm / Electronics & Navigation 7

Helm / Electronics & Navigation 6



Tuna Tower



Deck 1 - Bow



Deck 2 - Tower



Deck 3 - Bridge Seating



Deck 4 - Port Bridge Seating



Deck 5 - Bridge Seating



Deck 6 - Helm Seats



Deck 7 - Forward Bridge Storage



Deck 9 - Port Bridge Rod Locker



Deck 8 - Bridge Refrigerator



Deck 10 - Starboard Bridge Rod Locker



Engine & Mechanical Equipment 1 - Engine Room



Engine & Mechanical Equipment 2 - Engine Room



Engine & Mechanical Equipment 3



Engine & Mechanical Equipment 4



Engine & Mechanical Equipment 5



Engine & Mechanical Equipment 6 - Forward Engine & Mechanical Equipment 7 - Forward Pump



Engine & Mechanical Equipment 8 - Bow Thruster



Cockpit / Fishing Equipment 1



Cockpit / Fishing Equipment 2



Cockpit / Fishing Equipment 3



Cockpit / Fishing Equipment 4



Cockpit / Fishing Equipment 5



Cockpit / Fishing Equipment 6 - Teaser Reels



Rear Profile 1



Rear Profile 2



КОНТАКТЫ

Андрей Шестаков (Andrey Shestakov) – ведущий яхтенный брокер отдела продаж яхт и судов компании Atlantic Yacht and Ship Inc. Официальный представитель Atlantic Yacht and Ship Inc. для русскоговорящих клиентов в центральном офисе компании в Майами/Форт Лодердейл/Флорида/США.

Контактная информация

Email: info@atlanticyachtandship.ru

Web: www.atlanticyachtandship.ru

Телефоны

Бесплатный звонок по России: **8 800 234-4456**

Москва и Московская область: **+7 495 766-6268**

Краснодарский край: **+7 918 465-6644**

США, Майами, Флорида: **+1 954 274-4435**

Время работы

Понедельник – Суббота: **9:00 - 21:00**
EDT

Воскресенье: **Закрито**

Адрес



Harbour Towne Marina, 850 NE 3rd St,
STE 213, Dania, FL 33004