



## ADEA — SUNREEF



**Судостроитель:** SUNREEF

**Год постройки:** 2017

**Модель:** Катамаран

**Цена:** 1 600 000 € EUR

**Местонахождение:** Italy

**Длина общая:** 60' 1" (18.30m)

**Ширина:** 30' 3" (9.20m)

**Макс. осадка:** 5' 3" (1.60m)

**Крейс. скорость:** 8 Kts. (9 MPH)

**Макс. скорость:** 15 Kts. (17 MPH)

Купить ADEA — SUNREEF а также выбрать подходящую вам яхту из нашего каталога яхт вам поможет опытный яхтенный брокер Андрей Шестаков. На сегодняшний день компания Atlantic Yacht and Ship Inc. имеет большое количество яхт в собственном списке продаж, а также тесно сотрудничает со всеми крупными яхтенными производителями по всему миру.

Для того чтобы купить яхту ADEA — SUNREEF а также проконсультироваться по любому вопросу связанному с покупкой, продажей, чартером яхт позвоните по телефону **8 800 234-4456** (бесплатно по РФ).

# ОГЛАВЛЕНИЕ

|                               |    |
|-------------------------------|----|
| ОГЛАВЛЕНИЕ                    | 2  |
| ХАРАКТЕРИСТИКИ                | 4  |
| Обзор                         | 4  |
| Основная информация           | 6  |
| Размеры                       | 6  |
| Скорость, вместимость и масса | 6  |
| Размещение                    | 7  |
| Корпус и палуба               | 7  |
| Информация о двигателе        | 7  |
| ФОТОГРАФИИ                    | 8  |
| Deck                          | 8  |
| Exterior starboard            | 8  |
| Exterior                      | 8  |
| Exterior stern                | 8  |
| Deck                          | 9  |
| Flybridge                     | 9  |
| Sunbathing area               | 9  |
| Cockpit                       | 9  |
| ADEA Logo                     | 9  |
| Dining                        | 9  |
| Master cabin                  | 10 |
| Cabin                         | 10 |
| Bathroom                      | 10 |
| Bathroom with hammam sauna    | 10 |
| Bathroom                      | 10 |
| Cabin                         | 10 |
| Lounge and kitchen            | 11 |
| Lounge                        | 11 |

---

|                       |           |
|-----------------------|-----------|
| Navigation area       | 11        |
| Navigation area       | 11        |
| Chart plotter         | 11        |
| <b>КОНТАКТЫ</b>       | <b>12</b> |
| Контактная информация | 12        |
| Телефоны              | 12        |
| Время работы          | 12        |
| Адрес                 | 12        |

# ХАРАКТЕРИСТИКИ

## Обзор

**Sailing Catamaran ADEA** Built by Sunreef Yachts in 2017, ADEA is the best equipped Sunreef 60 Loft built in the past years. Her owner kept her in mint condition and added a large variety of extras and features. ADEA offers spacious deck and cabin layouts with a large aft cockpit, an open sun deck with a cushioned sunbathing area at the bow as well as an inviting flybridge with the helm and another seating arrangement. Her extra-large swim platform is the ideal entry for various watersport activities. Below deck she offers 1 master cabin with en suite hammam sauna and queen size bed, 3 double cabins with bathroom en Suite and a spacious, light-flooded salon that provides 360° view with a fully equipped Miele® kitchen. ADEA features a fully air-conditioned living space below deck, intelligent LED ambience lighting, a state of the art connected Sonos® sound system with Bluetooth iPod and iPad connectivity. Every cabin is equipped with large window areas that offer sea view from the bed. Lighting and design elements below deck have been very carefully and individually selected by the owner after the highest standards in order to maintain a clean and smooth visual appearance. **GENERAL**

**SPECIFICATION** Length overall: 18,30 m Breadth overall: 9,20 m Lightship displacement: 33 T Draft maximum (lightship): 1,60 m Main engines: 2 x 110 HP Fuel capacity: 2 x 900 L Water capacity: 1x 800 L Mast length: 24 m Fully battened main sail: 120 m<sup>2</sup> Genoa: 70 m<sup>2</sup> Number of people (category A): 12 Adaptation to commercial requirements **CONSTRUCTION** • Hulls, deck, flybridge and all structural bulkheads constructed of E-glass sandwich laminate with reinforcement by infusion process. Hull outer osmosis protection in vinylester resin • Rudders constructed of a moulded glass/vinyl ester. Rudder stocks are in alluminium alloy • Aft platform • Antifouling with epoxy primer **RIGGING & SAILS** • Carbon mast and carbon boom • Lazy jack and lazy bag • Fully battened main sail made of Dacron 1st choice, cross cut, 2 reefs • Genoa double pleated made of Dacron 1st choice • Solent double pleated made of Dacron 1st choice • Gennaker polyester (with boat logo) • Complete gears with electric furling system for genoa, solent and gennaker • 4 electric winches (including main sail winch) • Blocks and jammers **MECHANIC & STEERING SYSTEM** • 2 complete engines 110HP (D3 Volvo) with direct duplex F51 steel shafts • Fuel tanks capacity upgraded to 2x900L • 2 engine speed controls – on the flybridge and at internal navigation table • Fuel transfer pump • Rope cutters on the propeller shafts • hydraulic steering system • self – aligning lower and top bearings • 5-strokes steering wheel (diameter 1000mm) • 2 emergency tillers **DECK GEAR & MOORING EQUIPMENT** • Bow pulpits with integrated teak seats • Hydraulic gangway • Dinghy electric launching system with remote controller • 2 swim ladders on both skirts • Deck lights • Hatch at the top of the stairway between cockpit and flybridge • Tent for the front part • Windlass REGAL 2300x24V with chain counter • Anchor Spade 75KG Galvanized with 120m galvanized chain diameter 13mm • Anchor Manson/CQR 48kg with 30m galvanized choain diameter 13mm • towing line 50m • mooring kit (8 fenders + 4 mooring ropes) • shroud cutter **ELECTRICAL SYSTEMS** • AC-230V 50Hz 1PH: Main switchboard with panel extension (manual change over shore-generators) • 2 x charger 24V/100A + extra charger Skylla 24V/100A • inverter (24V/5000W 230 VAC 50Hz) + extra inverter 230V/50Hz/5000W • shore power inlet 2x80A (230V 50Hz) with 2x20m cord • convenient

sockets layout including extra USB charging points all over the boat, 3 outside sockets and special double socket 230V for work table in engine room • DC-24V : main switchboard, DC distribution, wiring (special marine quality) • 2 starting batteries • house batteries upgraded to 1000Ah • Generator 19 KVA, 230V 50Hz • 2x alternator 24V/80A

**LIGHTS & DOMOTIC SYSTEM** • Domotic system for lighting (ceiling lights with dimmers), controls ( internal and external lights, navigation lights, control of valves and pumps of black water) , D/C system and measurements (tank level monitoring with alarm, battery and Victron charger monitoring with alarm: starter/main batteries bank/emergency batteries, measurement of temperature in the engine room – independent of the engine room module • Boat lights with LED (interior & exterior lights, navigation lights, mast courtesy lights, deck search light) • Lighting in engine room • 4 x LED underwater light

**NAVIGATION & ELECTRONICS** • B&G navigation pack: radar 4G, autopilot, AIS, depth&speed&temperature sensor, GPS,VHF with DSC function (dual station, built in AIS receiver, Hailer/Horn Loudspeaker, intercom function), searchlight+control unit, compass size 135mm • satellite phone Iridium 9555 • GOST tracking system • fishfinder compatible with B&G • alarm system with hatch&door interruption detectors • iPad for weather condition display system on the navigation station • CCTV system with 6 cameras

**PLUMBING** • fresh water system: 1x800L tank equipped with level indicators, 1x pressurized pump, 2x water heater 80L • black water system: tanks upgraded to 2x220L, 1x electric pump with automatic discharge system equipped with 3 way valves (discharge in the sea or holding tanks) • watermaker 220L/h – 220V • 4 electrical and 2 manual bilge pumps • sea water pump for washing the deck • 2x fresh water outlet for washing the deck on both sides on the aft • 2x hand shower on deck • shower head on the cockpit ceiling with mixing valve • retractable hose (5m) with shower head in the chain locker for chain wash • electric toilets 24V in bathrooms with fresh water flush

**COMFORT ON BOARD & LEISURE ITEMS** • air-conditioning 60 000 BTU including fitted forepeak • electrically recessed blinds in the saloon, master cabin and nav station (manual in the cabins) • manually concealed skyscreen on cabin ceiling hatches • satellite TV antenna KVH TV6 • 4G/LTE Wifi antenna IOS/Android App control • 55” TV in saloon with lifting system up/down • digital cloud (wifi network with 12TB hard drive) • Hi-Fi pack for saloon: Sonos 5.1 • Hi-Fi pack for cabins: Sonos Play 3 • Headset – Bose 35 - 5pcs • 4 extra waterproof speakers (2 in the cockpit and 2 on the flybridge)

**HOME APPLIANCES** • complete galley equipment • washing-dryer machine • ice make and refrigerator for drinks in cockpit • extra fridge in the forepeak (STBD) • stainless steel BBQ • fishing rods holders

**SAFETY EQUIPMENT** • adaptation to commercial requirements – MCA including automatic fire extinguishing system in the engine rooms, EPIRB, gas detection with alarm • complete rescue equipment with life-rafts for 12 persons

**EXTERIOR FINISHING** • deck covered with teak and installed flush hatches • flybridge covered with teak • cockpit and skirts floor covered with teak • teak toe rails along deck sides • teak floor in the saloon • stainless steel sliding entrance doors • cockpit and flybridge mattresses with cushions set

**EXTRAS** • bimini upgraded to big fully composite • premium interior finishing – highest quality materials selection including wooden teak floor in main salon, carpets in the cabins, leather finishing for sofa, nav station and captain chair • galley equipment upgraded to Miele with extra appliances: compact oven, combi steam cooker, induction cooker, gas combi set, 2x gourmet warming drawer, automatic coffee machine, dishwasher, fridge with integrated freezer • Grohe sparkling water system in galley • hammam Aquasteam 30 in master bathroom • set of sunshades and covers for cockpit & flybridge • solar panels on flybridge and bimini •

special noise reduction option for the whole engine room **ADDITIONAL EQUIPMENT** • tender ZAR 43 wit outboard engine Mercury F 60 ELPT CT • Seabob with accesories and dedicated fixing on the aft • wakeboards with dedicated fixing on the aft • kayak • stand up paddle • multipurpose board sail&surf • diving electric compressor 6m3/h • Nintendo Switch

## Основная информация

|                             |                                    |
|-----------------------------|------------------------------------|
| <b>Тип судна:</b> Катамаран | <b>Подкатегория:</b> Cutter        |
| <b>Модельный год:</b> 2017  | <b>Год постройки:</b> 2017         |
| <b>Страна:</b> Italy        | <b>Открытая палуба мостика:</b> Да |
| <b>Кубрик:</b> Да           |                                    |

## Размеры

|                                     |                               |
|-------------------------------------|-------------------------------|
| <b>Длина общая:</b> 60' 1" (18.30m) | <b>Ширина:</b> 30' 3" (9.20m) |
| <b>Макс. осадка:</b> 5' 3" (1.60m)  | <b>Трапы:</b> 79' 1" (24.10m) |

## Скорость, вместимость и масса

|  |   |
|--|---|
| <b>Крейс. скорость:</b> 8 Kts. (9 MPH)                 | <b>Крейсерская скорость поворота:</b> 2500 Kts.   |
| <b>Дальность на крейсерской скорости:</b> 720          | <b>Макс. скорость:</b> 15 Kts. (17 MPH)           |
|  | <b>Макс. скорость поворота:</b> 3000 Kts.         |
| <b>Водоизмещение:</b> 72752.54646 Pounds               | <b>Вместимость воды:</b> 211.3376416 Gallons      |
| <b>Вместимость сточного бака:</b> 116.23570288 Gallons | <b>Объем топливного бака:</b> 475.5096936 Gallons |
| <b>Расход топлива:</b> 5.28344104 Gallons              |   |

## Размещение

---

**Всего кают:** 4

**Всего коек:** 8

**Спальные места:** 8

**Всего ком. состава:** 4

**Каюты экипажа:** 2

**Койки экипажа:** 2

**Спальных мест экипажа:** 2

## Корпус и палуба

---

**Материал корпуса:** Composite

**Комплектация корпуса:** Катамаран

**Цвет корпуса:** White

**Дизайнер корпуса:** Sunreef Yachts

## Информация о двигателе

---

**Двигатели:** 2

**Производитель:** Volvo Penta

**Модель:** D3-110

**Тип двигателя:** Inboard

**Тип топлива:** Diesel

# ФОТОГРАФИИ

**Deck**



**Exterior starboard**



**Exterior**



**Exterior stern**





**Deck**



**Flybridge**



**Sunbathing area**



**Cockpit**



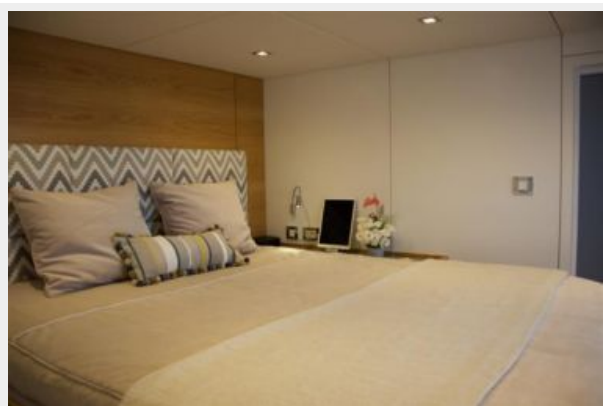
**Dining**



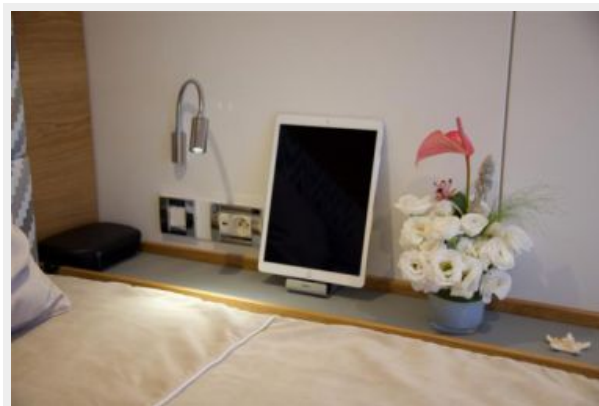
**ADEA Logo**



**Master cabin**



**Cabin**



**Bathroom**



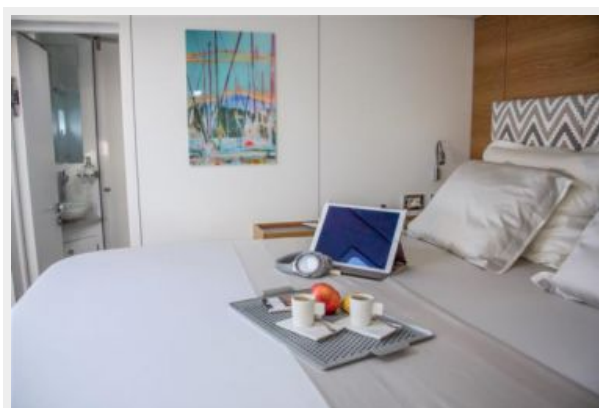
**Bathroom with hammam sauna**



**Bathroom**



**Cabin**



### Lounge and kitchen



### Lounge



### Navigation area



### Navigation area



### Chart plotter





# КОНТАКТЫ

---

Андрей Шестаков (Andrey Shestakov) – ведущий яхтенный брокер отдела продаж яхт и судов компании Atlantic Yacht and Ship Inc. Официальный представитель Atlantic Yacht and Ship Inc. для русскоговорящих клиентов в центральном офисе компании в Майами/Форт Лодердейл/Флорида/США.

## Контактная информация

---

Email: [info@atlanticyachtandship.ru](mailto:info@atlanticyachtandship.ru)

Web: [www.atlanticyachtandship.ru](http://www.atlanticyachtandship.ru)

## Телефоны

---

Бесплатный звонок по России: **8 800 234-4456**

Москва и Московская область: **+7 495 766-6268**

Краснодарский край: **+7 918 465-6644**

США, Майами, Флорида: **+1 954 274-4435**

## Время работы

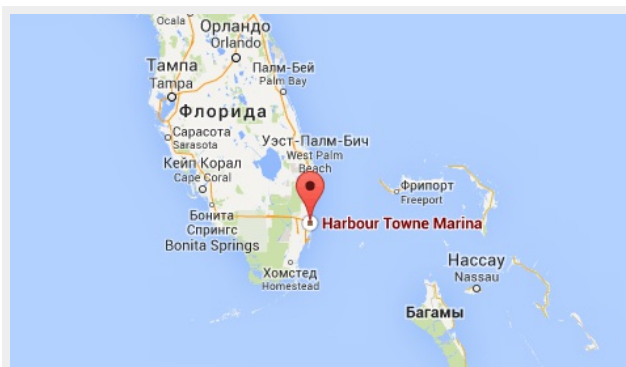
---

Понедельник – Суббота: **9:00 - 21:00**  
EDT

Воскресенье: **Закрито**

## Адрес

---



Harbour Towne Marina, 850 NE 3rd St,  
STE 213, Dania, FL 33004