



NEVER ENOUGH — FEADSHIP



Судостроитель: FEADSHIP

Год постройки: 1992

Модель: Моторная яхта

Цена: \$14,995,000 USD

Местонахождение: United States

Длина общая: 140' 0" (42.67m)

Ширина: 27' 3" (8.31m)

Макс. осадка: 8' 6" (2.59m)

Крейс. скорость: 12 Kts. (14 MPH)

Макс. скорость: 14 Kts. (16 MPH)

Купить **Never Enough — FEADSHIP** а также выбрать подходящую вам яхту из нашего каталога яхт вам поможет опытный яхтенный брокер Андрей Шестаков. На сегодняшний день компания **Atlantic Yacht and Ship Inc.** имеет большое количество яхт в собственном списке продаж, а также тесно сотрудничает со всеми крупными яхтенными производителями по всему миру.

Для того чтобы купить яхту **Never Enough — FEADSHIP** а также проконсультироваться по любому вопросу связанному с покупкой, продажей, чартером яхт позвоните по телефону **8 800 234-4456** (бесплатно по РФ).

ОГЛАВЛЕНИЕ

ОГЛАВЛЕНИЕ	2
ХАРАКТЕРИСТИКИ	4
Обзор	4
Основная информация	4
Размеры	4
Скорость, вместимость и масса	4
Размещение	4
Корпус и палуба	5
Информация о двигателе	5
ПОДРОБНОЕ ОПИСАНИЕ	6
Salon	6
Dining	6
Galley	6
Master Stateroom	6
Guest Staterooms	6
Pilothouse	6
Aft Deck	6
Flybridge Deck	7
Flybridge Pantry	7
Sun Deck	7
Engine Room	7
Navigation Equipment	7
Communications Equipment	7
Tender & Water Sports Equipment	7
Deck Equipment	7
Safety & Security Protection	8
Construction	8
Crew Quarters/Laundry	8

Refit 2018	8
Refit History	8
Exclusions	8
Исключения	9
Отказ от ответственности	9
ФОТОГРАФИИ	10
Salon	10
Salon	10
Master Stateroom	10
Master Stateroom	10
Guest Stateroom Twin	10
Guest Stateroom Queen	10
Pilothouse	11
Captains Office	11
Dining	11
Aft Deck	11
Engine Room	11
КОНТАКТЫ	12
Контактная информация	12
Телефоны	12
Время работы	12
Адрес	12

ХАРАКТЕРИСТИКИ

Обзор

"NEVER ENOUGH" is one of the finest pedigree yachts built in the world. This particular 140' Feadship MotorYacht was commissioned as one of the highly recognized Gallant Lady's, built with oversight by a very knowledgeable yachtsman and well known for unsurpassed quality and design. "Never Enough" features accommodations for 10 guests in 5 staterooms, with a spacious on deck master, expansive skylounge and sun deck. The attention to detail is evident throughout the yacht with exquisite overheads, beautiful Pommele and Sapele Mahogany, and Italian marble finishes. The "Never Enough" has recently undergone an exterior and mechanical refit consisting of a complete paint job, new teak, aft deck and swim platform reconfiguration, electronics upgrades, new A/C chillers, new Caterpillar C32 Acerts, 2 new John Deere 100Kw generators, complete engine room upgrade, all new AV 2018. The costs associated with this extensive refit have exceeded \$10.0Mm. Recent major price reduction of \$4.0M. Owner will consider a smaller yacht in trade

Основная информация

Тип судна: Моторная яхта

Подкатегория: Tri-Deck

Модельный год: 1992

Год постройки: 1992

Страна: United States

Размеры

Длина общая: 140' 0" (42.67m)

Ширина: 27' 3" (8.31m)

Макс. осадка: 8' 6" (2.59m)

Скорость, вместимость и масса

Крейс. скорость: 12 Kts. (14 MPH)

Макс. скорость: 14 Kts. (16 MPH)

Вместимость воды: 5000 Gallons

Вместимость сточного бака: 500 Gallons

Объем топливного бака: 12500 Gallons

Размещение

Всего кают: 5

Каюта капитана: Да

Спальных мест экипажа: 8

Корпус и палуба

Материал корпуса: Aluminum

Информация о двигателе

Двигатели: 2

Производитель: Caterpillar

Модель: C32 Acert

Тип топлива: Diesel

ПОДРОБНОЕ ОПИСАНИЕ

Salon

The Salon is elegantly finished with fine woods, marble, custom carpeting and Italian Granite, and features excellent natural lighting and panoramic views. The entertainment system includes a 55" Samsung Smart TV with Crestron and Apple mini pad control. In the aft port corner of the salon is a polished black granite full service bar with ice maker, refrigeration, double sink and cabinetry for storing liquor and a PA system. The on deck powder room features Sapele wood, marble and woven copper wall coverings.

Dining

The dining salon is located on the flybridge deck and features a hand crafted oval table that comfortably seats 12. A highlight of this room is the beautiful gold domed ceiling. Leading up to the dining area is a winding staircase with a beautifully carved wood handrail. There is a powder room located on the flybridge deck, featuring Italian marble floors and custom upholstered walls.

Galley

• Garland range • True Refrigerator & Freezer • Microwave • Hobart oven • Vulcan steamer • Vulcan Salamander • Hobart dishwasher • DA Matot food elevator

Master Stateroom

The full beam Master Stateroom is forward on the main deck and features a king size bed, his and hers marble baths separated by a walk in shower and tub, towel warmers, electrically controlled Roman Shades, exotic woods and silk padded walls. There is a spacious seating area with an entertainment center concealed behind fine wood cabinetry with a new Samsung 32" smart TV with Crestron and Apple mini pad control. The suite is equipped with B&G instruments for wind speed and direction, air and water temp, ship speed, and water depth read outs.

Guest Staterooms

The four Guest Staterooms include 2 VIP double cabins and 2 Twin cabins, silk padded walls, recessed lighting and custom made sliding Shoji panels. Each cabin has separate marble and wood baths with handcrafted fixtures, built in lighted vanities, Shoji panels, bidet, all new Samsung 32" smart TV's with Crestron and Apple mini pad controls. There is a personal safe located in the foyer closet.

Pilothouse

The Pilothouse has spacious seating for guests and a leather banquette with a custom sliding table. Remarkable woodwork demonstrates the craftsmanship the Dutch are capable of. The Navigation radio room is located adjacent to the ships control center. The Captains Quarters are located aft of the pilothouse with a full size bed and Pullman berth.

Aft Deck

The Aft Deck lounge has seating for 8 guests at two round teak tables. A Staircase leads down to the large teak

platform. There is electric power for deep drop reels and the tender can be tied to the recessed cleats and mooring whips.

Flybridge Deck

The Flybridge Deck converts to a casual open air lounge for guests. Dining or informal conversation is the guest's choice while enjoying a spectacular ocean view. When travelling, up to a twenty four foot tender can be stored on deck.

Flybridge Pantry

• Jura coffee machine • Refrigerator • Microwave • Electrolux dishwasher

Sun Deck

The Sun Deck can be accessed from the main staircase or via the aft deck. There is plenty of seating - both shaded and open, a Jacuzzi and six sun lounge chairs for guests to relax while watching the world pass by. Equipped with a wet bar and service area. There are complete sets of controls and electronics for the captain to operate the yacht from this vantage point.

Engine Room

The engine room has been completely refurbished and painted. • New Caterpillar C32 Acert engines. • 2 new John Deere generators. • New generator sound shields. • New Atlas 90KVA shore power converter installed. • Upgraded main switchboard and new power management system. • All new A/C chilled water system. • Engine room piping renewed. • New night watch alarm and monitoring system.

Navigation Equipment

• 2x Furuno GP 170 • Anschultz Pilotstar D autopilot • Furuno DS80 speed log • Anschultz Standard 22 compass • Furuno depthsounder • 2x Furuno band radars • Nobeltec chartplotter • B&G Depth, Speed, Water, Temperature & Wind • Furuno SAT C • Furuno NAV text • Furuno AIS

Communications Equipment

• 2x ICOM VHF • HP Printer scanner • Intellian VSAT • 2x Intellian 580 HD TV domes • Computer • Cellular phone • US/Caribbean & European TV systems • WiFi throughout • Ray with fog & emergency

Tender & Water Sports Equipment

• 32' 2007 Boston Whaler "Outrage" fully equipped for fishing

Deck Equipment

• 2x Christian Steen 5.5 kW electric windlass systems including two recessed 460 lbs High Holding anchors with 70 fathoms/20mm chain •

Exterior covers for all exterior furniture and cushions • Steen electric capstans aft • Aluminum storm covers for all ports and windows • Marquipt 5step TideRide ladder • Self-aligning boarding ladder

Safety & Security Protection

• 2x 20 persons liferafts • 2x EPIRB • 4x Recessed life rings • Breathing hoods (2 per cabin) • FBI alarm system for alarm panel with pager • Smoke/Fire detectors in all areas • Manual Halon system (engine room & galley) • CCTV 6 cameras (3 p21+, 3 stationary in crew lounge and radio room)

Construction

• Aluminum hull & superstructure • Teak Decks • Bottom plating 8mm • Side plating 7mm • Plating under engines 10mm • 4x watertight bulkheads • Accommodations area on floating vibration absorbers

Crew Quarters/Laundry

Accommodations for up to 8 crew. • Walk-in refrigerator & freezer units, air or water cooled. • Microwave • Refrigerator • Coffee maker • Toaster • Icemaker • 2x Samsung stacked washer/dryer

Refit 2018

REFIT 2018 (Lauderdale Marine Center): 1. New Caterpillar C32 ACERT engines and new John Deere 100Kw gens are installed 2. New Main engine and generator exhausts installed 3. New Generator soundshields installed 4. New Atlas 90KVA shore power converter installed 5. Upgraded main switch board and new power management system 6. New Chiller plant installed, chilled water loop piping completed, sea water piping renewed, air handlers renewed and/or replaced. 7. Engine room piping renewed 8. New night watch alarm and monitoring system installed 9. Flybridge deck extended and upper deck exterior seating areas fabricated and all new exterior cushions throughout all 3 decks 10. Exterior painting by Luu Marine. 11. Bottom paint 2 coats of anti-fouling 12. New Teak decks installed 13. Wheelhouse dash modifications, new nav/com electronics and associated cable runs to the mast and engine room, electronics to wing stations and sundeck.

Refit History

Refit 2006, 2008, 2010, 2018 **2006 refit**

All overheads recovered, A/V system upgraded, new flatscreens and ipod docking stations. Addition of a 9 Ft.

Swim Platform, making the yacht 140' in length, as well as new tender, jet skis, and water toys. **2008 refit**

Conversion of two aft cabins into large Queen berths. 38,000 lbs of lead added to the keel lowering draft 1', and tripled size of rudders **2010 refit**

Interior fully refurbished. All interior soft goods were replaced, the staterooms were fitted with new linens, new lighting and artwork, and the bathrooms also updated. Salon furniture was reupholstered, and new carpets installed throughout. Installation of larger stabilizers. **2018 refit**

New engines, gens, shore power converter, power management system, chiller plant, alarm and monitoring system, teak decks, nav/com electronics, new exterior and bottom paint, and more. The sun deck was extended, and all new exterior cushions and covers throughout all 3 decks.

Exclusions

Owner and crew's personal effects, engineer's tool box. A complete list of exclusions is available upon request.

Исключения

При продаже яхты исключаются личные вещи владельца, личное оборудование, включая список предметов личного пользования владельца яхты, но не ограничиваясь гидроциклами, катерами, сибоб, снаряжением для рыбалки и дайвинга если таковые имеются на момент заключения сделки.

Отказ от ответственности

Компания предоставляет описание судна или яхты добросовестно, но не может гарантировать точность этой информации, а также не ручается за техническое состояние. Покупатель должен проинструктировать своих агентов или оценщиков исследовать представленную информацию более подробно, по собственному желанию. Продажа судна или яхты, изменение цены или снятие с продажи будет происходить без предварительного уведомления.

ФОТОГРАФИИ

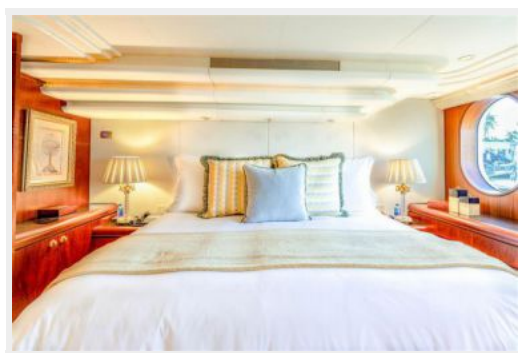
Salon



Salon



Master Stateroom



Master Stateroom



Guest Stateroom Queen



Guest Stateroom Twin



Pilothouse



Captains Office



Aft Deck



Dining



Engine Room



КОНТАКТЫ

Андрей Шестаков (Andrey Shestakov) – ведущий яхтенный брокер отдела продаж яхт и судов компании Atlantic Yacht and Ship Inc. Официальный представитель Atlantic Yacht and Ship Inc. для русскоговорящих клиентов в центральном офисе компании в Майами/Форт Лодердейл/Флорида/США.

Контактная информация

Email: info@atlanticyachtandship.ru

Web: www.atlanticyachtandship.ru

Телефоны

Бесплатный звонок по России: **8 800 234-4456**

Москва и Московская область: **+7 495 766-6268**

Краснодарский край: **+7 918 465-6644**

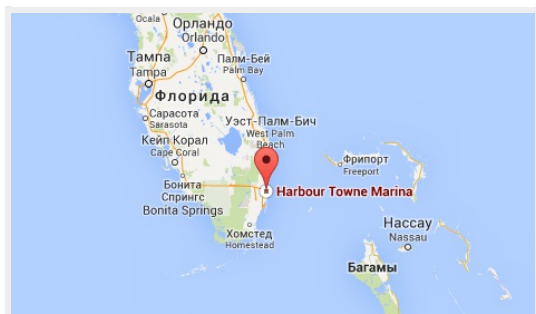
США, Майами, Флорида: **+1 954 274-4435**

Время работы

Понедельник – Суббота: **9:00 - 21:00**
EDT

Воскресенье: **Закрито**

Адрес



Harbour Towne Marina, 850 NE 3rd St,
STE 213, Dania, FL 33004