



ORYX — BENETTI



Builder: BENETTI

Year Built: 2013

Model: Motor Yacht

Price: 11 250 000 € EUR

Location: Turkey

LOA: 132' 0" (40.24m)

Beam: 27' 3" (8.30m)

Max Draft: 7' 3" (2.20m)

Cruise Speed: 15 Kts. (17 MPH)

Max Speed: 16 Kts. (18 MPH)

Our experienced yacht broker, Andrey Shestakov, will help you choose and buy a yacht that best suits your needs **ORYX — BENETTI** from our catalogue. Presently, at Atlantic Yacht and Ship Inc., we have a wide variety of yachts available on our sale's list. We also work in close contact with all the big yacht manufacturers from all over the world.

If you would like to buy a yacht **ORYX — BENETTI** or would like help answering any questions concerning purchasing, selling or chartering a yacht, please call **+1 954 274-4435**

TABLE OF CONTENTS

TABLE OF CONTENTS	2
SPECIFICATIONS	3
Overview	3
Basic Information	3
Dimensions	3
Speed, Capacities and Weight	4
Accommodations	4
Hull and Deck Information	4
Engine Information	4
PHOTOS	5
CONTACTS	11
Contact details	11
Telephones	11
Office hours	11
Address	11

SPECIFICATIONS

Overview

ORYX is a 40.2m (132ft) yacht from the Classic Supreme series by Tuscan yard Benetti, delivered in 2013 with exteriors by Rome-based Stefano Righini Design and interiors by Francois Zuretti's studio in Nice. The aft sun deck is home to the first of her two jacuzzis. Moving forward along this large deck there is a lounge area with sofas, flanked by sun loungers, a retractable awning shades a dining table that seats 10 and a walk-up bar, and there's a snug sofa with views forward. The second jacuzzi is on the forward bridge deck with large sun pads aft leading to a Portuguese bridge for sundowners and informal dining, and is effectively an additional sun deck. Aft there is a sky lounge with seating to starboard and a six-seat gaming table to port with a fully-equipped bar. On the aft bridge deck is a convivial lounge area to port, where guests can withdraw after dining at the 10-seater al fresco table to starboard. Steps lead down to the aft main deck, a large and versatile space with bulkhead seating. More steps lead down to the swim platform and tender garage, or you can move inside past the walk-up bar into the spacious main lounge with its sofas, armchairs and tables, and a 50in HDTV with surround sound for movie nights. There is a formal dining area forward of that and the full-beam owner's suite has his and hers bathroom with bath, shower and sauna, a walk-in wardrobe and a separate office, as well as a 42in HDTV with surround sound. On the lower deck, two further double cabins and two twin cabins, each with a pullman berth, complete accommodation for 10 guests in five bright, stylish cabins. They are attended by up to eight crew. Twin 1,450hp MTU engines give this composite yacht to a maximum speed of 15.5kn, a cruising speed of 14.5kn and a range of 3,500nm at her economical speed of 12kn. **KEY FEATURES** Impressive volume for a 40m yacht Exteriors by Stefano Righini Design and interiors by Francois Zuretti's studio Bow transformed into bathing and relaxing area Two jacuzzis 2 x 1,450hp MTU engines A maximum speed of 15.5kn, a cruising speed of 14.5kn

Basic Information

Category: Motor Yacht

Model Year: 2013

Year Built: 2013

Country: Turkey

Dimensions

LOA: 132' 0" (40.24m)

LWL: 107' 8" (32.80m)

Beam: 27' 3" (8.30m)

Max Draft: 7' 3" (2.20m)

Speed, Capacities and Weight

Cruise Speed: 15 Kts. (17 MPH)

Cruise Speed Range: 3500

Max Speed: 16 Kts. (18 MPH)

Gross Tonnage: 346 Pounds

Water Capacity: 7200 Gallons

Fuel Capacity: 42800 Gallons

Accommodations

Total Cabins: 5

Total Berths: 10

Sleeps: 10

Captain Cabin: True

Crew Cabin: 4

Crew Berths: 7

Crew Sleeps: 7

Hull and Deck Information

Hull Material: GRP

Exterior Designer: Stefano Righini

Interior Designer: Zuretti/Benetti

Engine Information

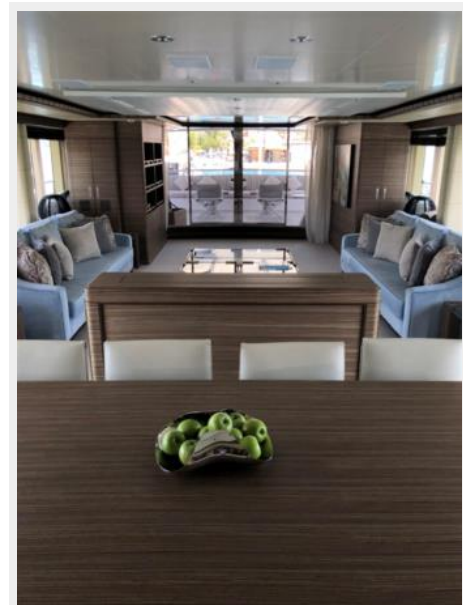
Engines: 2

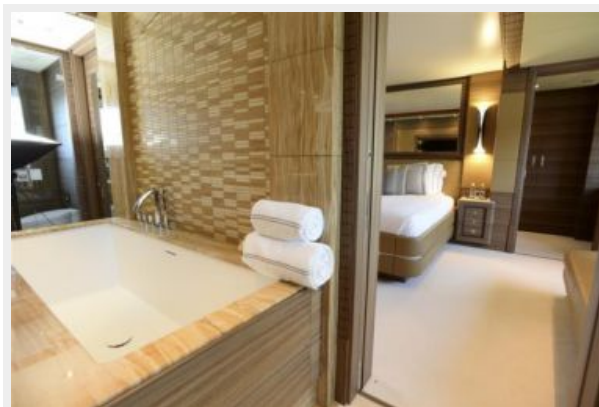
Manufacturer: MTU

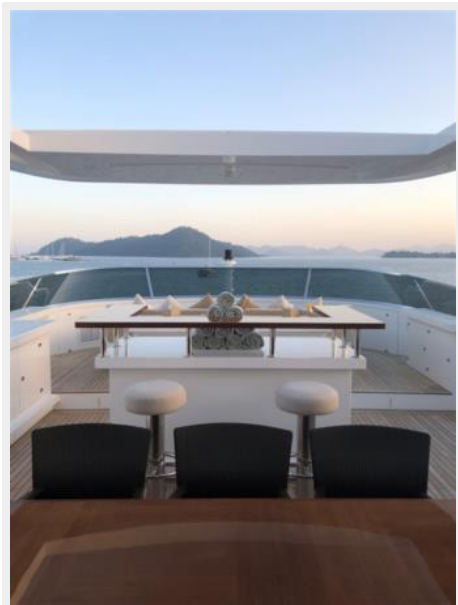
Model: 12V 2000 M72

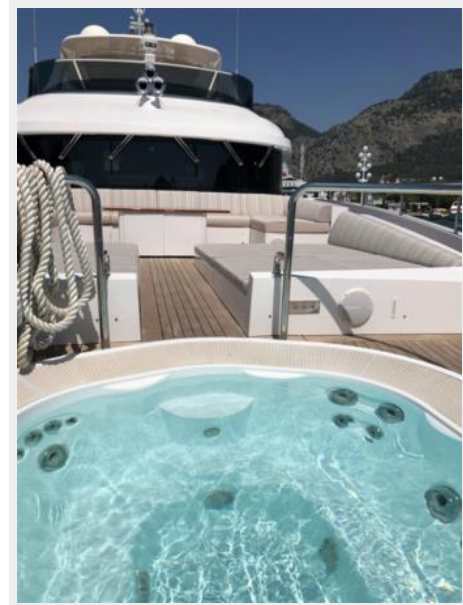
Fuel Type: Diesel

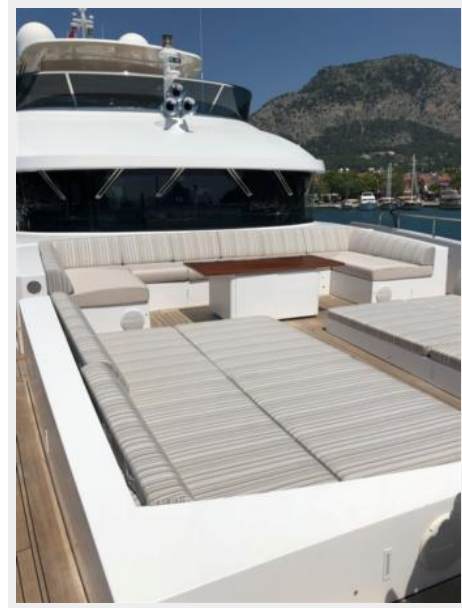
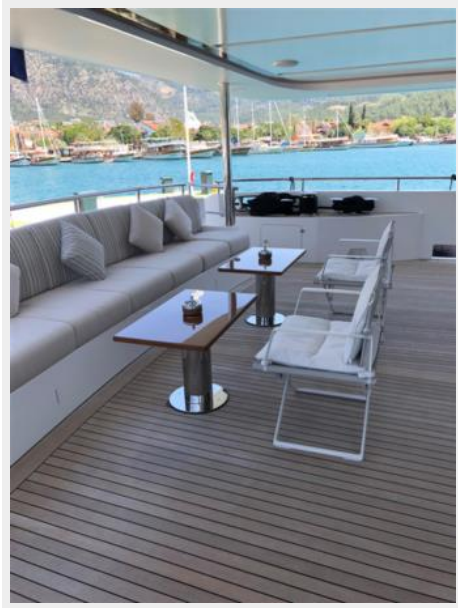
PHOTOS

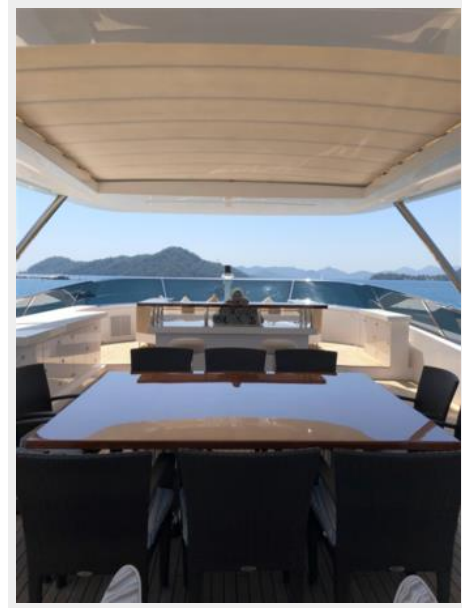












CONTACTS

Andrey Shestakov, leading yacht broker of the sales department of Atlantic Yacht and Ship Inc. Atlantic Yacht and Ship Inc., the official representative of the Miami/Fort Lauderdale FL headquarters.

Contact details

Email: info@atlanticyachtandship.ru

Web: www.atlanticyachtandship.ru/en/

Telephones

USA: +1 954 274-4435

RUS: +7 495 766-6268

Office hours

Monday – Saturday: **9:00 - 21:00** EDT

Sunday: **closed**

Address



Harbour Towne Marina, 850 NE 3rd St,
STE 213, Dania, FL 33004