



T6 — FLYGHTSHIP



Builder: FLYGHTSHIP

Year Built: 2007

Model: Motor Yacht

Price: \$19,950,000 USD

Location: United States

LOA: 159' 2" (48.51m)

Beam: 31' 8" (9.65m)

Max Draft: 12' 3" (3.73m)

Cruise Speed: 12 Kts. (14 MPH)

Max Speed: 16 Kts. (18 MPH)

Our experienced yacht broker, Andrey Shestakov, will help you choose and buy a yacht that best suits your needs T6 — FLYGHTSHIP from our catalogue. Presently, at Atlantic Yacht and Ship Inc., we have a wide variety of yachts available on our sale's list. We also work in close contact with all the big yacht manufacturers from all over the world.

If you would like to buy a yacht T6 — FLYGHTSHIP or would like help answering any questions concerning purchasing, selling or chartering a yacht, please call +1 954 274-4435

TABLE OF CONTENTS

| | |
|--|----|
| TABLE OF CONTENTS | 2 |
| SPECIFICATIONS | 4 |
| Overview | 4 |
| Basic Information | 4 |
| Dimensions | 4 |
| Speed, Capacities and Weight | 5 |
| Accommodations | 5 |
| Hull and Deck Information | 5 |
| Engine Information | 5 |
| DETAILED INFORMATION | 6 |
| Description | 6 |
| Dimensions | 6 |
| Construction | 6 |
| Classification | 6 |
| Performance | 7 |
| Machinery | 7 |
| Steering & Propulsion | 7 |
| Auxiliary Equipment | 8 |
| Tankage | 8 |
| Electrical Equipment | 9 |
| Navigation Equipment | 9 |
| Communication & Satellite | 10 |
| Entertainment Equipment | 10 |
| Office/Study | 11 |
| Domestic Appliances, Equipment and Laundry | 11 |
| Accommodations | 12 |
| Deck Equipment | 13 |
| Tenders & Toys | 14 |

| | |
|--------------------------|----|
| Safety & Fire Protection | 14 |
| Exclusions | 15 |
| Exclusions | 15 |
| Disclaimer | 15 |
| PHOTOS | 16 |
| CONTACTS | 20 |
| Contact details | 20 |
| Telephones | 20 |
| Office hours | 20 |
| Address | 20 |

SPECIFICATIONS

Overview

T6 is an award-winning yacht built for maximum enjoyment. Boasting an array of comfort and amenities such as helipad and hangar plus a spacious sports garage for water and land toys. Pieter Beeldsnijder and Anthony Bedford were behind the exterior and interior designs offering a perfect combination of comfortable and luxurious surroundings.

T6 is the perfect superyacht for world cruising especially for those who have adventure in their soul, offering a safe and comfortable experience with stunning exterior and interior designs.

She is available for inspection in the Foreign Trade Zone (FTZ) at Rybovich Marina.

Basic Information

Category: Motor Yacht

Model Year: 2007

Year Built: 2007

Country: United States

Fly Bridge: Yes

Helipad: Yes

Dimensions

LOA: 159' 2" (48.51m)

LWL: 142' 7" (43.46m)

Beam: 31' 8" (9.65m)

Max Draft: 12' 3" (3.73m)

Speed, Capacities and Weight

Cruise Speed: 12 Kts. (14 MPH)

Max Speed: 16 Kts. (18 MPH)

Gross Tonnage: 568 Pounds

Water Capacity: 3698.408728 Gallons

Holding Tank: 184.9204364 Gallons

Fuel Capacity: 33681.93663 Gallons

Accommodations

Total Cabins: 5

Total Berths: 7

Sleeps: 10

Total Heads: 6

Crew Cabin: 6

Crew Berths: 10

Crew Sleeps: 12

Hull and Deck Information

Hull Material: Steel

Deck Material: Teak

Exterior Designer: Flyghship/PB Design

Interior Designer: Anthony Bedford -
Flyghtship PB Design

Engine Information

Manufacturer: Wartsila

Model: 6L20

Engine Type: Inboard

Fuel Type: Diesel

DETAILED INFORMATION

Description

T6 is an award-winning yacht built for maximum enjoyment. Boasting an array of comfort and amenities such as helipad and hangar plus a spacious sports garage for water and land toys. Pieter Beeldsnijder and Anthony Bedford were behind the exterior and interior designs offering a perfect combination of comfortable and luxurious surroundings.

T6 is the perfect superyacht for world cruising especially for those who have adventure in their soul, offering a safe and comfortable experience with stunning exterior and interior designs.

She is available for inspection in the Foreign Trade Zone (FTZ) at Rybovich Marina. World Super Yacht Award 2008 Best Displacement Motor Yacht of 500GT - 1299GT World Super Yacht Award 2008 Motor Yacht of the Year

Dimensions

| | |
|----------------|-------------------|
| Length o.a: | 48.53 m / 159'2" |
| Length : | 43.45 m / 142'7" |
| Beam: | 9.70 m / 31'8" |
| Draft: | 3.76 m / 12'3" |
| Displacement: | 620 Metric tonnes |
| Gross tonnage: | 568 Metric tonnes |
| Net tonnage: | 170 Metric tonnes |

Construction

| | |
|-------------------|--|
| Hull: | Steel |
| Superstructure: | Aluminium |
| Decks: | Teak |
| Naval Architect | Peter Beeldsnijder |
| External Designer | Flyghtship/PB Design |
| Internal Designer | Anthony Bedford – Flyghtship/PB Design |

Classification

Class: Lloyd's Register 100 A1, SSC, YACHT, G6 + LMC
 MCA: MCA, SOLAS, MARPOL, Compliant for vessels over 500 GRT
 LRS: 1006738

Performance

Maximum speed: 15.5 Knots
 Cruising speed: 11.5 knots
 Consumption (approx): 186 lph @ 11.5 knots approx. Based on a maximum capacity of 130,000 liters And "no reserve"
 Range: 7,500 nm @ 11.5 knots 10,000nm@ 10 knots

Machinery

Engines: 2x Wärtsilä 6L20 1,080 kW @ 1,000 rpm
 Engine hours: Port 6014. Stbd 6015 (3/12/19)
 Reduction Ratios: 4.3:1
 Exhaust systems: Colpro dry exhaust fitted to main engine
 Generators: 2 x Caterpillar 3306, 170 Kva each @ 1,500rpm three phase 400/230 VAC (50 Hertz)
 Generator hours: Port 9967. Stbd 9974 (3/12/19)
 Emergency Generator: 1 x Caterpillar 3404, 112.5 Kva w/1 bank of 600A CCA capacity. 21,744 hrs (3/12/19)
 Shafts Generators: 1 x 310 Kva Stamford

Steering & Propulsion

Steering: Ulstien Tenfjord, type 1 x SR622, twin hydraulic units driving a rotary actuator direct drive on the rudder stock
 Engine Controls: Wartsila Wichmatic 2 System (New2018) control from the wheelhouse, open bridge & mobile station aft of S' structure
 Propellers: Wärtsilä, 2.35m 4-blade variable pitch, highly skewed, Ice Class
 Gearbox: Wartsila / Valmet type M2HLC 1000+SC400+P400 marine gearbox

Alternator: Stamford HCM 434 F13-18 alternator, 310 Kva is driven by the portside gearbox PTO

Auxiliary Equipment

Bow thruster: KoopNautic model 200-60E (90kw) 620mm, 4 blade Manganese bronze propeller

Stern thruster: KoopNautic model 200-60E (90kw). 620mm, 4 blade Manganese bronze propeller.

Hydraulics: Bosch Rexroth main system of the vessel Tenfjord for the steering system
Koopnautic for the stabilizer system Forward deck access hatch Winel sliding water-tight door

Water maker: 2 x Village Marine PW3000, 11.370 l / day each

Water Sterilizer/Filter: Wedeco Ci-25 UV for domestic water supply Jowa Silver Sterilizer for potable water in tanks Village marine IMF3000 media filter for seawater intake

Stabilizers: 1 x Twin KoopNautic Searocq 4080 units Electronic stabilization, underway & at rest. 4m 2- steel fins; 240, diameter shaft. Fins are powered by a 30kW powerpack

Fuel separator: Racor Fuel Filters model 79/1000 FG, 19 Triplex on main engines Duplex on all three generators

Air-conditioning: 1 x Heinen & Hopman chilled / heated water variable air volume marine aircon system

Ventilation: Custom Flyghtship designed auto-manual mechanical ventilation in engine room. Helicopter ventilation is specially filtered and dried.

Automatic Ventilation: 2 x 2500 CR/Hr Woods intake fans auto controlled (via Danfoss VLT6016 variable speed controllers) by engine room air pressure

Waste water treatment: Hamann

Fuel Oil Separator: Westfalia OTC 3-02-137 680l/hr

Lube Oil Separator: Westfalia OSD 6-91-067 540 l/hr

Toilet system: 1 x Jets model 64

Air Compressor: 2 x Atlas Copco LT75-30 bar compressors

Tankage

Fuel: 127,500 l / 33, 682 g

Lubrication oil: 1,000 l / 264 g

| | |
|--------------------|--------------------|
| Dirty lube oil: | 2,000 l / 528 g |
| Fresh water: | 14,000 l / 3,698 g |
| Grey water: | 6,000 l / 528 g |
| Black water: | 700 l / 185 g |

Electrical Equipment

| | |
|------------------------|--|
| Voltage: | DC – 24V two wire insulated return AC – 400/230 VAC (50hZ) |
| Frequency: | 50hZ Hz |
| Chargers/Transformer: | 1 x Certified double wound transformer Galvanically isolated 4 phase transformer |
| Shore power converter: | Entec portable |
| Inverter: | Nil |
| Batteries: | All lead acid |
| Main Gen Start: | 2 x Banks of 800A CCA capacity |
| Emergency Gen start: | 1 bank 600A CCA capacity |
| General/Navigation: | 2 banks 450 A/hr capacity |
| Radio: | 1 x 24v |
| Engine Room: | 1 x bank of 225 A/hr capacity (24v) |

Navigation Equipment

| | |
|-------------------|---|
| Magnetic compass: | 1 x Satellite compass integrated in radars |
| Gyro compass: | Nil |
| Log: | Nil |
| Echo sounder: | 1 x Furuno FCV1200LB.5/2 2kW colour |
| Sonar: | 1 x Furuno FR2127B-6, range 72nm |
| Autopilot: | 1 x Simrad model AP 50 |
| Radar: | 1 x Furuno model FR2137SB-12 1 x Furuno model FR2127B-6 |
| Camera: | 1 x Annke w/20 cameras in: machinery, spaces, holds, main side decks, aft deck, ships sides, and forward of bow |
| Monitors: | 21" Hatteland Displays |
| Transponder: | 2 x SART Radar transponder |

| | |
|---|--|
| Electronic chart system: | 1 x Transas NS3000 Nav plotting system |
| Navtex: | 1 x NX500 |
| GPS: | 1 x Furuno Model GP32 1 x Integrated in radar |
| Instrumentation system (wind speed & direction): | 1 x Furuno wind instruments |
| Spotlights | 2 x Carlisle and Finch Searchlights. Bridge and Flybridge operated |

Communication & Satellite

| | |
|----------------------|--|
| Sat Com: | 1 x Intellian v100, 80cm, 8w BUC, standard and copol terminal model Felcom 15VHS |
| GSM: | 1 x Huawei worldwide GSM 3G/4G. Integrated in telephone exchange. |
| SSB radio: | 1 x GMDSS 250w model FS2570 |
| ID System: | Furuno automatic ID System FA100-GVA |
| GMDSS: | 1 x Furuno GMDSS w/DSC60 radio station 1 x GMDSS VHF w/SDC unit model FM-8500 |
| Sat Phone: | 1 x Iridium Sailor SC4150 |
| VHF hand held radio: | 2 x Furuno waterproof handheld |
| VHF radio: | 1 x Icom Air IC-A110 |
| Loudhailer: | Lloyds approved air horn w/automatic controller |
| Telephone: | 1 x Lloyds approved centralized Panasonic PABX data phone network |
| WiFi Network | Ubiquiti wireless network |
| Internet services | Kerio Bandwidth control Yachtspot WiFi receiver |

Entertainment Equipment

Main Salon

| | |
|---------------|--|
| TV: | 1 x Samsung 55" LED 4K |
| TV Hoist: | 1 x Linak S |
| Movie System: | 1x NR1067 Sound receiver |
| DVD: | 1 x Marantz UD7007 Bluray DVD multi region |

Dining

| | |
|---------------------|--------------------------------|
| Receiver, amplifier | 1 x NAD D7050 network zone amp |
| Speakers: | Niles 8" |

Master Stateroom

| | |
|---------------|-----------------------------------|
| TV/DVD: | 1 x Samsung 23" HD LCD |
| Movie System: | 1 x Marantz NR1067 Sound receiver |

| | |
|---------------------|--|
| DVD: | 1 x Marantz UD7007 Bluray DVD Multi region |
| Bridge Deck Salon | |
| TV/DVD: | 1 x Samsung 40" LCD HD screen |
| TV Hoist: | 1 x Linak A/S |
| Receiver, amplifier | 1 x NAD D7050 network zone amp |
| DVD: | 1 x Marantz UD7007 Bluray DVD multi region |
| Speakers: | 1 x Niles speakers with Linn Sizmik sub woofer 3 pair x Niles 8" wall ceiling speakers outside |
| Flybridge / Laundry | |
| Amplifier: | 1 x Pioneer DVH-P5650MP amplifier CD |
| Guest Staterooms | |
| Television: | 1 x Samsung 21" LCD |
| Speakers: | 1 x custom designed invisible speaker using Niles components |
| DVD: | 1 x Sony BDV E2100 |
| Galley | |
| Amplifier: | Denon UD-M31 CD receiver |
| Crew Mess | |
| Television: | 1 x Samsung 32" LCD TV |
| Home Theatre: | Marantz NR1607 |
| DVD: | 1 x Marantz UD7007 Bluray DVD multi region |
| Speakers: | 3 x Niles |

Office/Study

| | |
|---------------|--|
| PC/Printer: | 1 x Compact Shuttle PC, Pentium 4, 2.8 GHz 1 x Hewlett Packard M125 printer / copier |
| Data Network: | 1 x LAN w data outlets for connection of laptops to internet, |

Domestic Appliances, Equipment and Laundry

| | |
|----------------|--|
| Refrigerator: | Angelo Pro CX702 |
| Refrigerator: | Under the counter – Angelo Po 6TRA2 |
| Freezer: | Under the counter – Angelo Po GIU 1313 |
| Blast Chiller: | Stainless Steel, Angelo Po SM03LT7M |
| Stove: | 1 x Bench top electric range – Angelo Po model IGPE2 |
| Oven: | 1 x Steam/Combination Angelo Po model FCV61E |
| Grill: | 1 x Bench top electric grill – Angelo Po model 0G0FT2E |

| | |
|------------------------|---|
| Microwave: | 1 x Panasonic combi |
| Deep Fryer: | 1 x Bench top deep frier – Angelo Po 0G0FR3E |
| Salamander: | 1 x Salamander – Angelo Po 60SME |
| Icemaker: | 1 x Angelo Po PGC42 |
| Waste Disposal Unit: | 1 x Insinkerator 75 |
| Trash Compactor: | 1 x Insinkerator 8251 |
| Filtered Water System: | 1 x Octo marine re-mineralisation unit |
| Dishwasher: | 1 x Angelo Po LF50EM |
| Ironing Press: | 1 x SILC SpA |
| Washing machine: | 2 x Electrolux W355H w/stainless steel panels |
| Dryer: | 2 x Electrolux T2130 w/stainless steel panels |

Accommodations

10 guests in 5 staterooms and 12 crew in 6 cabins

Saloon

On main deck the saloon offers comfortable seating area with 2 x large sofas, 4 x leather armchairs w/leather ottoman around a custom glass topped coffee table. Double glass, stainless steel automatic sliding doors open on aft onto the main deck aft dining area. The entertainment centre is housed in a cabinet. The teak cabinets and bookcase have a semi-gloss finish.

Dining Saloon

The custom-made teak dining table provides seating for 12. Glass bi-fold windows extend around the aft of the dining area. There is free standing seating for 8 and permanent seating for 6 finished with leather cushions. Hinged doors with glass panels open aft to main deck both sides.

Owner's Day Lounge

An intimate seating area with leather furniture, custom teak dining table seating 6 and a custom glass topped coffee table seating 7. Double glass automatic sliding doors aft open onto the bridge deck aft exterior dining area. The entertainment centre housed in a teak cabinet. Semi-gloss finished teak cabinets and bookcase throughout lounge.

Master Stateroom

Owner's suite with en-suite is located on main deck. It features a Study with Custom made writing desk with lockable drawers; chairs, semi-gloss finished teak joinery (bookcases, display cabinets) and recessed halogen down lights.

The Stateroom immediately forward of the entrance doors is arranged as private sitting area with 2 lounge chairs and a coffee table. The sleeping area is provided with a large king sized bed.

including storage drawers, headboard, teak night stands on either side of the bed, teak vanity dresser, recessed halogen down lights and indirect lighting, telephone and data jacks.

Guest Cabins

2 x VIP cabins with ensuite. Each featuring a walk around queen-sized bed with storage drawers, night stands on either side of the bed, teak dresser, Cedar lined closet, hidden entertainment centre opposite the bed, spacious cabinets and book shelves, a Teak writing desk with study lamp and chair, a Sofa seating, recessed halogen down lights, indirect lighting, telephone and data jacks.

2 x twin-sized bed cabins with en-suite, storage, headboards, Teak cabinets and bookshelves, Semi-gloss finish teak nightstand between beds, hidden entertainment centre, Cedar lined closet with shelf and drawer, recessed halogen down lights, indirect lighting and telephone and data jacks.

Crew Accommodation

2 x Double cabins for captain and engineer with en-suite 2 x Twin cabins main deck with en-suite
2 x Twin cabins on lower with deck en-suite

Deck Equipment

| | |
|-------------------|---|
| Helicopter: | AS350 B3 – high performance |
| Anchors & chain: | 2 x 495 kg, HHP Pool N fully balanced anchors 1 x 300 m of 24mm grade V2, high test anchor chain per anchor 1 x Stern anchor of 150 kg, HHP Pool N fully balanced anchor 1 x Stern anchor chain is 150 m of 17.5mm grade V2 1 x Auto anchor chain counter fitted to the main windlass |
| Anchor roller: | 2 x w/devils claw assembly |
| Mooring lines: | 8 inflatable fenders and 2 fender boards stored on board |
| Windlass: | 1 X Custom built 22kW hydraulically driven horizontal main anchor windlass, exposed parts stainless steel or bronze |
| Gypsies: | 2 x independently controlled |
| Drums: | 2 x Warping drums |
| Capstans: | 2 x 9kW Muir w/4 tonne line pull each Polished bronze ali, bronze capstans, electric driven |
| Passarelle: | Aluminum, stored in Tenderhold |
| Boarding ladders: | 2 x Flyghtship customized accommodation passenger ladders port & stbd 1 x Stainless steel swim platform ladder |
| Bimini top: | Removeable canvas awning extending aft from Main Deck Dining |

Furniture covers: to Heli-deck area and Flybridge to bridge deck.
Covers for all built-in exterior seats and tables

Tenders & Toys

Tenders: 1 x 9.8m Naiad, 450hp, MAN diesel, jet Propulsion 1 x 6.3m crew/rescue tender, 160hp Volvo diesel stern drive

Crane: 1 x Helia 25t/m (tonnes per meter capacity, Marine rated, 12m range (stored below decks for deployment of equipment)

Dive equipment: 5 x Bottles 1 x Onboard Bauer electric compressor

Safety & Fire Protection

Security

Fire alarm

system: 1 x Lloyds approved Autronica BS-116 Autrosafe Alarm system installed

Automation alarm:

1 x Rockwell monitoring system with monitors on bridge, engine room, crew mess, engineer's cabin

Service pumps:

1 X General service pumps and emergency bilge pump can be used to supply seawater via the inlet strainers to the fire system.

Fire Fighting

Fire hydrants:

10 x Fire hydrants are located throughout the vessel

Fire sensors:

72 x Fire detector sensors

Water/mist system:

1 x Hi Fog water/mist system protects all accommodation and mechanical spaces

Foam system:

1 x Independence high capacity spray foam system through 8 on-deck nozzles for Heli-deck protection by an independent.

Extinguishers:

Portable chemical and CO2 extinguishers distributed throughout vessel

Fire suppression system:

1 x Ansul R-102 in galley with automatic discharge of foam w/automatic appliance shutdown

Bilge and Fire System

Bilge

Pump:

1 x Bilge pumps, main Johnson model Fres 65-135 E/room)

Fire Pump:

1 x Emergency fire pump Johnson model 50.205 (lazarette)

Holds Bilge Pump:

2 x Holds bilge pumps Johnson model Fres 40-110

Emergency Bilge Pump:

1 x Emergency/Service bilge pump Johnson modes Fres 65-135 (Lazaretty)

| | |
|-------------------------|---|
| Chain locker: Safety | 1 x Fwd chain locker Johnson model Fres 40-110 |
| 1MCA station: | 1 x located on aft starboard bridge deck |
| Life Rafts: | 2 SOLAS compliant RFD life rafts – type A, 25 person |
| Flare Pack: | 2 x Pains Wessex of suitable size |
| Lifebuoys: | 8 |
| Ladder: | 1 Embarkation ladder |
| EPIRB: | 1 x ACR GlobalFix 406 Mhz Auto Sea Shelter |
| Life jackets: | 3 RFD childrens 12 SOLAS foam adult 10 X/Large adult inflatable jackets |
| Speedline | 1m 250 line throwing apparatus |
| Immersion suit | 7 |
| Medical Kit: | 1 s MCA approved global kit |
| Life raft pole: | ACR 9 Ghz SART |

Exclusions

Helicopter is excluded from sale but is available under separate negotiation. Owners personal effects Complete exclusion list to be provided upon request.

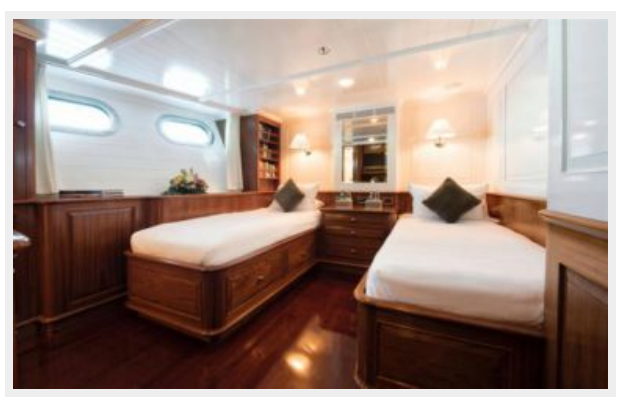
Exclusions

Owner's personal belongings. Owner's personal toys, including but not limited Jet-skis, Tenders, Sea Bobs, Fishing & Diving equipment.

Disclaimer

The Company offers the details of this vessel or yacht in good faith but cannot guarantee or warrant the accuracy of this information nor warrant the condition of the vessel. A buyer should instruct his representatives, agents, or his surveyors, to investigate such details as the buyer desires validated. This vessel or yacht is offered subject to prior sale, price change, or withdrawal without notice.

PHOTOS









CONTACTS

Andrey Shestakov, leading yacht broker of the sales department of Atlantic Yacht and Ship Inc. Atlantic Yacht and Ship Inc., the official representative of the Miami/Fort Lauderdale FL headquarters.

Contact details

Email: info@atlanticyachtandship.ru

Web: www.atlanticyachtandship.ru/en/

Telephones

USA: +1 954 274-4435

RUS: +7 495 766-6268

Office hours

Monday – Saturday: **9:00 - 21:00** EDT

Sunday: **closed**

Address



Harbour Towne Marina, 850 NE 3rd St,
STE 213, Dania, FL 33004