



DIANE — BENETTI



Builder: BENETTI

Year Built: 2007

Model: Motor Yacht

Price: 9 900 000 € EUR

Location: Spain

LOA: 141' 1" (43.00m)

Cruise Speed: 12 Kts. (14 MPH)

Max Speed: 20 Kts. (23 MPH)

Our experienced yacht broker, Andrey Shestakov, will help you choose and buy a yacht that best suits your needs **DIANE — BENETTI** from our catalogue. Presently, at Atlantic Yacht and Ship Inc., we have a wide variety of yachts available on our sale's list. We also work in close contact with all the big yacht manufacturers from all over the world.

If you would like to buy a yacht **DIANE — BENETTI** or would like help answering any questions concerning purchasing, selling or chartering a yacht, please call **+1 954 274-4435**

TABLE OF CONTENTS

TABLE OF CONTENTS	2
SPECIFICATIONS	3
Basic Information	3
Dimensions	3
Speed, Capacities and Weight	3
Accommodations	3
Hull and Deck Information	4
Engine Information	4
DETAILED INFORMATION	5
Detailed Description	5
Exclusions	17
Disclaimer	17
PHOTOS	18
CONTACTS	24
Contact details	24
Telephones	24
Office hours	24
Address	24

SPECIFICATIONS

Basic Information

Category: Motor Yacht

Model Year: 2007

Year Built: 2007

Refit Year: 2019

Country: Spain

Dimensions

LOA: 141' 1" (43.00m)

Speed, Capacities and Weight

Cruise Speed: 12 Kts. (14 MPH)

Cruise Speed Range: 2000

Max Speed: 20 Kts. (23 MPH)

Displacement: 815710.3694 Pounds

Gross Tonnage: 483 Pounds

Water Capacity: 2641.72052 Gallons

Fuel Capacity: 15321.979016 Gallons

Accommodations

Total Cabins: 5

Sleeps: 11

Captain Cabin: True

Crew Cabin: 4

Crew Sleeps: 10

Hull and Deck Information

Hull Material: Aluminum

Deck Material: Teak

Hull Designer: Benetti

Exterior Designer: Stefano Natucci

Interior Designer: Francois Zuretti

Engine Information

Engines: 2

Manufacturer: MTU

Model: 16V 4000 M90

DETAILED INFORMATION

Detailed Description

1. MAIN CHARACTERISTICS

TYPE	Semi-Displacement Motor Yacht
HULL NO.	FB 236
BUILDER	Benetti
NAVAL ARCHITECT	Benetti
EXTERIOR DESIGN	Stefano Natucci
INTERIOR DESIGN	Francois Zuretti
YEAR	2007
CLASSIFICATION	ABS Maltese Cross 100-A1.1 "Y" & MCA Compliant
CONSTRUCTION	Aluminium Hull & Superstructure, Teak Decks
CREW	09-Oct
FLAG	Isle of Man
ENGINES	2 x 3648Hp MTU 16V 4000 M90
GT	483
DISPLACEMENT	370 tons

2. DIMENSIONS

LOA	43.00m / 141'1"
BEAM	8.90m / 29'2"
DRAFT	2.10m / 6'9"

3. SPEED & RANGE UNDER POWER

MAXIMUM SPEED	20 knots
CRUISING SPEED	12 knots
FUEL CONSUMPTION	285 litres @ 12 knots 1,370 litres @ 19.5 knots
RANGE	2,000nm +/-

4. CAPACITIES

ACCOMMODATION	11 x Guests in 5 cabins 1 x Master, 2 x Double, 2 x Twin (1 with Pullman)
----------------------	--

CREW	10 x Crew berths 1 x Captain's double, 4 x Twin cabins (all ensuite)
FUEL	58,000 litres / 15,324 US gallons
FRESH WATER	10,000 litres / 2,642 US gallons
CLEAN LUBE OIL	1,200 litres / 317 US gallons
DIRTY LUBE OIL	1,200 litres / 317 US gallons
GREY WATER	2,830 litres / 747 US gallons
BLACK WATER	2,720 litres / 718 US gallons
WATERMAKERS	VMT Series 200 7,570 litres / 2,000 US gallons per day

5. ACCOMMODATION

OWNER	Forward on the main deck, ensuite bathroom with his and hers sinks and large jacuzzi bath. Owner's study
GUESTS	2 x Double cabins on the lower deck with ensuite bathrooms 2 x Twin cabins on the lower deck with ensuite bathrooms (one with additional pullman berth)
CREW	3 x Twin bunk crew cabins, 1 x Engineers Cabin (double) 1 x Captain's cabin (double)

6. MECHANICAL EQUIPMENT

ENGINES	2 x MTU 16V 4000 M90, 2,720 kW @ 2,100 rpm
ENGINE HOURS	Port: 6,510 / Stbd: 6,494 17Jnue 2019
GEARBOX	ZF 7540
PROPELLERS	2 x Five blade fixed partially skewed
STEERING SYSTEM	2 x Steering rams connected to the rudder stocks and connecting rod
RUDDER ANGLE	3 x Stations
STABILISERS	Naiad 620– Koop Nautic zero speed stabilisers
BOWTHRUSTER	1 x Naiad Vosper VT75
ELECTRICITY	60 cycle yacht, 208VAC, 3 phase, 60Hz primary users 208VAC, household appliances 110VAC
GENERATORS	1 x Northern Lights M1064HII – 99kW – 60HZ 120/210V

	1 x Northern Lights M1066A - 135kW – 60HZ – 120/210V
GENERATOR HOURS	Port: 14,637 / Stbd: 15,750 24 June 2019
SHORE POWER	1 x 125 Amp shore power inlet
BATTERIES TYPE	Gel Type
BATTERIES	Service, Emergency, Main engines starting, Diesel-generator starting, radio equipment
INVERTER	2 x 55 KVA Asea Frequency Converter
FUEL FILTERS	Separ SWK 2000/40 2x2(P&S)
FUEL OIL SEPERATOR	Alfa Laval MAB 104
OIL / WATER SEPARATOR	DVZ 500 FS4 "Oil Chief"
BILGE PUMP	DVZ electric self-priming pumps 220V/3 phase/60Hz Gianneschi ACM 501
FIRE PUMP	DVZ electric self-priming pumps 220V/3 phase/60Hz Gianneschi ACM 501
BOILERS	2 x Gianneschi Lt 250 10 kw
SEWAGE TREATMENT	Hamman 6640
WCs	Jets
AIRCONDITIONING	2 x Condaria WM/FCL 81004 CD III
VENTILATION	2 x Gianneschi EL-SR713 (Engine Room) 2 x EL-SR632 (Engine Room)

7. NAVIGATION EQUIPMENT

MAGNETIC COMPASS	1 x Jupiter
GYRO COMPASS	1 x Navigat X MK1
AUTOMATIC PILOT	1 x C-Plath Navipilot V HSC/GM
ECHO SOUNDER	1 x Furuno FCV1200L BB with Monitor Hatteland 19"
DEPTH INDICATOR	1 x B&G Hydra 2000
RADAR	2 x Furuno FR2117BB with 6.5 ft antenna with Monitor Hatteland 19" flat screen
TRANSPONDER	1 x Transas ECDIS with Monitor Hatteland 19" flat screen, black box computer
DGPS	1 x Leica MX 420 DGPS
NAVTEX	1 x Furuno NX700
WEATHER FAX	1 x Furuno FAX207
WIND INSTRUMENTS	1 x B&G Hydra 2000 analogic wind
AIS	Leica Satnav GPS/AIS

8. COMMUNICATION EQUIPMENT

SATCOM	Fleet 77, Phone, Fax and Data, GSM phone fax and 3G data 1 x Sailor Satcom C
CELLULAR SYSTEM	2 x GSM/GPRS Telular SX-5
VHF	2 x VHF GMDSS Sailor SP-3300 3 x VHF portable ICOM 1 x VHF Sailor RT5022
SSB	1 x SSB Sailor Series 4000 (MF)
TELEPHONE EXCHANGE	PABX Panasonic TDA 100 including 24 telephones KXT7453 and 8 BCA telephones
INTERNET	3G + Fleet 77, SeaTel Satellite TV and digiboxes, V-SAT, Wifi throughout the boat

9. DECK EQUIPMENT

ANCHOR WINDLASSES	2 x Nanni vertical windlasses
AFT WARPING CAPSTANS	2 x Nanni dual-direction capstans
ANCHORS	2 x Super High Holding Power anchors
ANCHOR CHAINS	2 x High tensile steel short link chains
BOAT CRANE & DAVITS	Automatic Tender & Jet-Ski handling System in Garage
PASSERELLE	1 x Motomar hydraulic retractable telescopic 2-stage gangway
BATHING LADDER	1 x Stainless Steel
SWIMMING PLATFORM	Teak decked, cleats, deck shower, railings
SEARCHLIGHT	2 x Bridge mounted remote controlled
AWNING	Sundeck 3 x Umbrellas + retractable awning Swim platform awning
JACUZZI DIP POOL	Sundeck 6 person
DUMB WAITER	Sundeck, Bridge Pantry, Galley Pantry
GYM EQUIPMENT	Static Bike Treadmill Free weights Power plate 2 x Mountain bikes

10. ENTERTAINMENT EQUIPMENT

LOWER DECK GARAGE

- 1 x Clarion Car stereo CD DB358 RMP
- 1 x Clarion Waterproof stereo cover
 - 2 x Clarion SRR 1027 speakers
- 1 x Clarion Power supply 220V/12Vdc
- 1 x Raymar Installation kit

CREW & ENGINEER CABINS

- 4 x Clarion Car stereo CD DB358 RMP
- 8 x Clarion SRR 1027 speakers
- 4 x Clarion Power supply 220V/12Vdc
- 4 x Raymar Installation kit

CREW MESS

- 1 x Clarion Car stereo CD DB358 RMP
- 4 x Clarion SRR 1027 speakers
 - 1 x Denon DVD-1720
- 1 x Sharp TV LCD 20"
- 1 x Clarion Power supply 220V/12Vdc
- 1 x Samsung Multi-standard system
 - 1 x Raymar Installation kit

GUEST CABIN (4 CABINS)

- 4 x Denon CD/DVD player ADV-M71
- 8 x Raymar Speaker for audio broadcasting system
- 4 x Xantec Infrared eyes 4 OUT
- 4 x Sharp TV LCD 20"
- 4 x Samsung Multi-standard system
- 4 x Raymar Installation kit

MAIN DECK SALOON

- 1 x Hantarex PD 42" Glass Mirror
- 1 x Denon DVD-1720
- 1 x Denon A/V amplifier AVR-3805

- 4 x B&W CWM 800
- 1 x B&W CWM Cinema
- 1 x Sub-woofer B&W 150W RMS ASW 675
- 1 x Xantec Infrared eyes 4 OUT
- 1 x Samsung Multi-standard system

- 1 x Raymar Installation kit

MAIN DECK DINING

- 2 x B&W CWM 6160 speakers
- 1 x Raymar CPA-60 amplifier
- 1 x Raymar CBI-001 control

- 1 x Raymar TX-01 (radio control for CPA-60)

- 1 x Raymar Installation kit

MAIN DECK AFT EXTERNAL

- 1 x Raymar CPA-60 amplifier
- 1 x Raymar CBI-001 control

- 1 x Raymar TX-01 (radio control for CPA-60)

- 2 x Sony XSMP61 marine speakers
- 1 x Raymar Installation kit

OWNER'S CABIN

- 1 x Samsung TV LCD 32"
- 1 x Denon DVD-1720
- 1 x Xantec Infrared eyes 4 out
- 1 x Denon A/V Amplifier AVR-2105
- 5 x Definitive tech. Speakers UIW 65

- 1 x Definitive tech. Sub-woofer Pro sub 80

- 1 x Samsung Multi-standard system
- 1 x Raymar Installation kit

OWNER'S ENSUITE

- 1 x Raymar CPA-60 amplifier
- 1 x Raymar CBI-001 control
- 1 x Raymar TX-01 (radio control for CPA-60)
- 2 x Def.Tech Stereo speakers UIW DCS5

- 1 x Raymar Installation kit

OWNER'S OFFICE

- 1 x Raymar CPA-60 amplifier
- 1 x Raymar CBI-001 control
- 1 x Raymar TX-01 (radio control for CPA-60)
- 2 x Def.Tech Stereo speakers UIW DCS5
- 1 x Raymar Installation kit

GALLEY

- 1 x Clarion Car stereo CD DB358 RMP
- 1 x Clarion Waterproof stereo cover
- 2 x Clarion SRR 1027 speakers
- 1 x Clarion Power supply 220V/12Vdc
- 1 x Raymar Installation kit

UPPER DECK

PANORAMIC SKY LOUNGE

- 1 x Hantarex PD 42" Glass Mirror TV
- 1 x Denon DVD-1720
- 1 x Denon A/V Amplifier AVR-3805
- 5 x B&W CWM 800
- 1 x B&W CWM Cinema
- 1 x Sub-woofer B&W 150W RMS ASW 675
- 1 x Xantec Infrared eyes 4 OUT
- 1 x Samsung Multi-standard system
- 1 x Raymar Installation kit

UPPER DECK AFT EXTERNAL

- 1 x Raymar CPA-60 amplifier
- 1 x Raymar CBI-001 control
- 1 x Raymar TX-01 (radio control for CPA-60)
- 2 x Sony XSMP61 marine speakers
- 1 x Raymar Installation kit

CAPTAIN'S CABIN

- 1 x RCD-M33 Denon
- 1 x Infrared eyes 4 out Xantec
- 2 x Speaker for audio broadcasting system Raymar
- 1 x TV LCD 20" Sharp Sharp
- 1 x Multi-standard system Samsung
- 1 x Installation kit Raymar

WHEELHOUSE

- 1 x Clarion Car stereo CD DB358 RMP
- 2 x Clarion SRR 1027 speakers
- 1 x Clarion Power supply 220V/12Vdc
- 1 x Raymar Installation kit

SUN DECK

- 1 x Clarion Car stereo CD DB358 RMP
- 1 x Clarion Waterproof stereo cover
- 1 x Raymar CPA-60 amplifier
- 1 x Raymar CBI-001 control
- 1 x Raymar TX-01 (radio control for CPA-60)
- 2 x Sony XSMP61 marine speakers
- 4 x Clarion SRR 1027 speakers
- 1 x Clarion Power supply 220V/12Vdc
- 1 x Raymar Installation kit

SATELLITE TV PACK

- 8 x DigiBox receiver for English Sky channels distributed in cabins
- 1 x UPS 2000Va
- 1 x Multiswitch for SAT broadcasting
- 1 x Central unit for TV/AM/FM terrestrial antenna amplifier and broadcasting
- 1 x Splitter series for broadcasting of RF TV and radio signals to the single positions
- 1 x Seatel Antenna model L 3004E
- 1 x Naval Omni direct terrestrial antenna TV Mark20
- 1 x Naval Amplifier Antenna stilo AM-FM VPA30

11. GALLEY & LAUNDRY EQUIPMENT

GALLEY

- 1 x Gaggenau Electric Oven 90cm EB 385-110 110V, Stainless Steel
- 1 x Gaggenau Electric Oven 60cm EB 240-111 110V, Inox
- 1 x Zanussi Exhaust hood over range MP 816 B 110V
- 1 x Gaggenau Burner Cooktop CK 260-104 110V L580 4 fuochi
- 1 x Miele Induction cooktop KM 5773 5 hobs
- 1 x Gaggenau deep fryer VF230-110 L288
- 1 x General Electric microwave oven JEM31SF 120V mono, stainless steel
- 1 x Kitchen Aid Artisan food processor Robotcoupe R101
- 1 x Miele Dishwasher G 8051 230V, Built-in model

LAUNDRY

- 2 x Miele Washer Machine PW 6065 230V, 3AC, Stainless Steel
- 2 x Miele Dryer Machine PT 7135 230V, 3AC, Stainless Steel

REFRIGERATOR ROOM

- Electrolux freezer RS06FX1F capacity 600l
- 2 x Electrolux fridge cellar RS06PX1F capacity 600l

CREW MESS

- 1 x General Electric Microwave Oven JEM31SF 120V mono, Stainless Steel
- Drinks Fridge Uline
- Food fridge - Eurotech

GUEST LOBBY

- 1 x General Electric Day fridge GMR04AAMWW 120V mono

MAIN DECK PANTRY

- 1 x Subzero Wine cellar 424G/S 115V, 46 bottles, under-counter
- 1 x U-Line Ice Maker BI 98 110 V, 25
- 1 x SMEG deep freeze CV102A
- 1 x SMEG fridge larder SS
- 1 x Miele Dishwasher G 8051 230V, Built-in model

MAIN SALOON BAR

- 1 x U-Line Ice Maker BI 95 110 V
- 1 x General Electric Day fridge GMR04AAMWW 120V mono

OWNER'S STUDY BAR

- 1 x General Electric Frigobar GMR02BANBB

UPPER DECK PANTRY

- 1 x Zanussi Glass washer LB 035 C 110 V
- 1 x General Electric Day fridge GMR04AAMWW 120V mono

PANORAMIC SALOON BAR

- 1 x U-Line Ice Maker BI 95 110 V
- 1 x General Electric Day fridge GMR04AAMWW 120V mono

SUN DECK EXTERIOR BAR

- 1 x General Electric Frigobar GMR02BANBB 120V mono
- 1 x U-Line Ice Maker BI 98 110 V
- 1 x Alpes Inox Barbeque 50/42 BE 208 mono 420x500 Domestic

12. SECURITY & SAFETY EQUIPMENT

SAFETY

- 4 x 10 people RFD life rafts with hydrostatic release and survival kit
- Life jackets installed in every cabin (one for each bed)
- 1 x McMurdo EPIRB
- 2 x McMurdo SART
- First aid Kit

SECURITY

- CCTV System Panasonic with fixed cameras port and starboard side decks and aft main deck and remote controlled camera in the Engine Room.
Monitor in the wheelhouse with a slave in the Crew Mess
- Ship's Safes - 1 x Jewel – Master, 1 x Captains, 2 x Guest cabins

FIRE FIGHTING

- Fire-extinguishers and fire hoses with nozzles
- Fire axes and fire blanket
- CO2 gas fire extinguishing system

ALARMS

- Autronica fire alarm system
- Security alarm system

BILGE PUMPS

- 2 x DVZ electric self-priming pumps 220V / 3 PH / 60 Hz

13. TENDERS & WATERSPORTS EQUIPMENT**TENDERS**

- 1 x 6.00m Novurania CL 600 – inboard 190hp diesel
- 1 x 4.00m Avon Emergency Rescue Boat 400 Professional, 25hp Yamaha O/B

WATER SPORTS

- Kawasaki STX 12F Jet Bike 1200cc
- Kawasaki 800 SXR Jet ski 800cc
- Various watertoys
- Inflatable Jellyfish pool

14. REFIT NOTES**2019**

- Main Engines fully overhauled at 6,000 hrs according to MTU schedule
- Annual survey Class and LYC compliance completed September 2019

- Interior refit to lower deck guest cabins and day heads
- Interior refit to main deck pantry and galley
- Interior refit to crew area
- Interior refit to upper pantry and Ships Office
- Grey Tank Auto/Manual operating panel replaced
- Air conditioner Chiller Plant overhauled
- Air conditioner air handler units overhauled
- ASEA 60 Hz master and shore power convertors overhauled
- Fresh water UV sterilization fitted to Fresh water tanks
- Jacuzzi pump heating element and filter set replaced

2018

- ABS Classification 10 year survey completed April 2018 (next is April 2023)
- Interior refit to main deck saloon
- Interior refit to upper deck saloon
- Interior refit to staircase and lobbies
- Interior refit to Master cabin
- Cutlass Bearings changed
- Rudder bearings changed
- Rudder tiller bar ball rose joints changed
- Motomar PLC's replaced
- Shaft seals replaced
- Engine room ventilation fans, dampers and control overhauled
- DVZ oily water separator filter, heater elements, PPM meter replaced
- Air compressor for ships service replaced

2017

- Emergency Steering hydraulics replaced
- Motomar hydraulics overhauled Bow thruster removed and overhauled
- Fresh water pump frequency drive replaced
- HEM Chlorine dosing unit fitted
- HEM water softener fitted
- Water makers removed and rebuilt, new membranes, pumps, filter and electrics
- Hamman system macerator pump, discharge pump and feed pump replaced
- Start batteries replaced for 2 x Generators, 2 x Main engines and emergency fire pump emergency and radio batteries replaced
- Fuel transfer pump and Alfa Laval fuel separator overhauled
- Aft capstans removed and rebuilt
- Stbd side anchor chain and gypsy replaced
- Tender crane overhauled and new lifting cable

2016

- Generators serviced – Alternator overhaul and main bearings replaced
- Generators serviced - Injectors and fuel lines replaced
- Interior refit – New head linings throughout and total replacement of the soft furnishings in the guest areas
- Fresh varnish on the rails and tables
- Main Steering hydraulics replaced
- Naiad Stabilisers Electronics replaced
- Fresh water pumps replaced
- Hot water capacity increased to 1,000 liters, 2 x storage tanks in garage, 2 x water heaters with 2 x waste heat exchangers fitted.
- ASEA 50Hz converter internals replaced
- Foredeck windlass stripped and rebuilt
- Black water tank shot blasted, welded and painted
- Grey water tank shot blasted and painted
- 2 x Fresh water tanks shot blasted and painted
- Bilge tank shot blasted and painted
- Sludge tank shot blasted and painted

2015

- Paint – hull topsides repainted
- Generators serviced – Turbo chargers, injection pump replaced
- New cream carpets and soft furnishings
- Naiad stabilisers removed and rebuilt
- Air conditioning raw water pumps replaced
- Stabiliser cooling pump replaced
- Removed domestic fridges and fitted 3 x commercial freezers and 2 x commercial fridges
- Port side anchor chain and gypsy replaced
- Hull (topsides) painted
- Main Deck: Teak re-caulked
- Upper deck aft: Teak re-caulked

2014

- New ceiling panels in the upper salon
- Apple TV and new AV system upgraded to all areas and cabins
- New TV's Smart 3D TVs in main salon and upper salon
- Maintenance throughout and cleaning carpets, re-varnishing panels
- Marble cleaning and polishing interior and exterior
- Water toys - new tender, 2 new paddle boards, new wet suits and vests,

snorkelling equipment

- 6 x Yoga mats
- 3 Parasols for the Sun deck 2x3m (these can be used when going slowly underway)
- Sun Deck: Teak deck re-caulked

2013

- Generator Major Service – Cylinder heads replaced
- New Carpets
- New Gym equipment

15. COMMENTS

Built in 2007 by her first and only Owner to date and continuously upgraded throughout his ownership including extensive refits recently in 2018 & 2019, DIANE is a fabulous tri-deck Benetti motor yacht which offers any potential new Owner a great all-round package.

Built as a semi-displacement hull, DIANE is of all-aluminium construction and cruises economically at displacement speeds. When required she can however reach 20 knots, and with her 2.1m/7' draft she additionally offers a Bahamas-friendly platform. Having recently completed her 10 Years ABS class survey in 2018, she offers any potential new Owner hassle-free yacht ownership for many years to come.

Her incredible volume of 483 GT in just 43 metres also make her one of the most spacious yachts in her class. This big volume combined with a very practical 5 cabin layout and an attractive contemporary interior that's hard to dislike makes DIANE in many ways the ideal family and charter yacht. Not too big, not too small, not too fast, not too slow. Just right in fact...

Exclusions

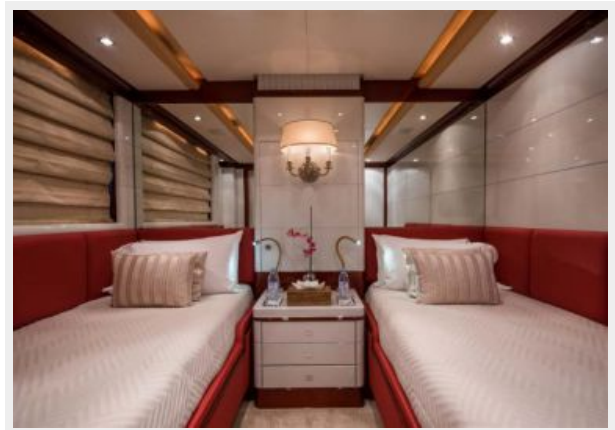
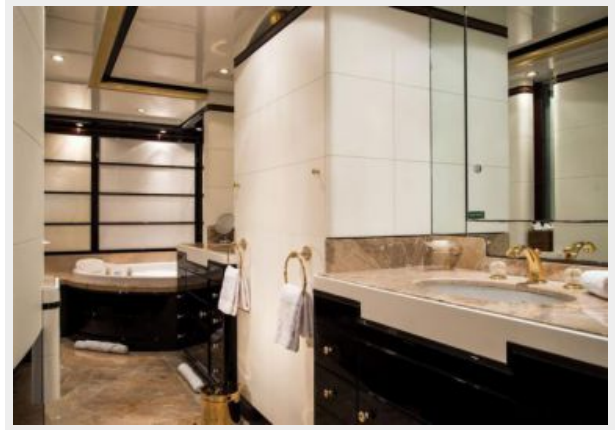
Owner's personal belongings. Owner's personal toys, including but not limited Jet-skis, Tenders, Sea Bobs, Fishing & Diving equipment.

Disclaimer

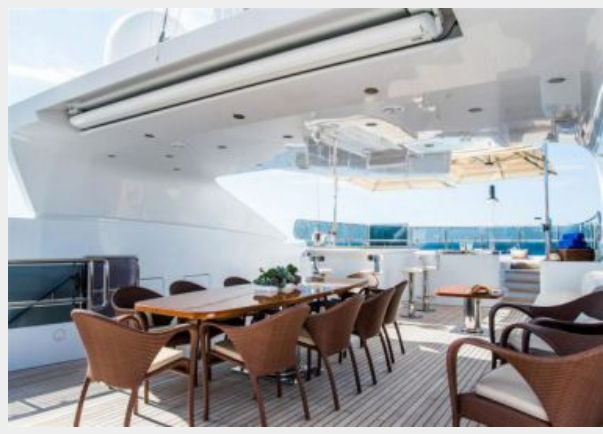
The Company offers the details of this vessel or yacht in good faith but cannot guarantee or warrant the accuracy of this information nor warrant the condition of the vessel. A buyer should instruct his representatives, agents, or his surveyors, to investigate such details as the buyer desires validated. This vessel or yacht is offered subject to prior sale, price change, or withdrawal without notice.

PHOTOS













CONTACTS

Andrey Shestakov, leading yacht broker of the sales department of Atlantic Yacht and Ship Inc. Atlantic Yacht and Ship Inc., the official representative of the Miami/Fort Lauderdale FL headquarters.

Contact details

Email: info@atlanticyachtandship.ru

Web: www.atlanticyachtandship.ru/en/

Telephones

USA: +1 954 274-4435

RUS: +7 495 766-6268

Office hours

Monday – Saturday: **9:00 - 21:00** EDT

Sunday: **closed**

Address



Harbour Towne Marina, 850 NE 3rd St,
STE 213, Dania, FL 33004