



PRINCESS 52 — PRINCESS YACHTS



Builder: PRINCESS YACHTS

Year Built: 2014

Model: Motor Yacht

Price: PRICE ON APPLICATION

Location: United Kingdom

LOA: 55' 2" (16.80m)

Beam: 15' 2" (4.60m)

Max Draft: 4' 2" (1.25m)

Cruise Speed: 23 Kts. (26 MPH)

Max Speed: 29 Kts. (33 MPH)

Our experienced yacht broker, Andrey Shestakov, will help you choose and buy a yacht that best suits your needs **Princess 52 — PRINCESS YACHTS** from our catalogue. Presently, at Atlantic Yacht and Ship Inc., we have a wide variety of yachts available on our sale's list. We also work in close contact with all the big yacht manufacturers from all over the world.

If you would like to buy a yacht **Princess 52 — PRINCESS YACHTS** or would like help answering any questions concerning purchasing, selling or chartering a yacht, please call **+1 954 274-4435**

TABLE OF CONTENTS

TABLE OF CONTENTS	2
SPECIFICATIONS	4
Overview	4
Basic Information	4
Dimensions	4
Speed, Capacities and Weight	5
Accommodations	5
Hull and Deck Information	5
Engine Information	5
PHOTOS	6
img42	6
img41	6
img43	6
img44	6
img45	6
img46	6
img47	7
img48	7
img50	7
img49	7
img52	7
img51	7
img54	8
img53	8
img55	8
img56	8
img57	8
img58	8

флай	9
мейн	9
ловер	9
CONTACTS	10
Contact details	10
Telephones	10
Office hours	10
Address	10

SPECIFICATIONS

Overview

HULL COLOUR White hull and superstructure
 NAVIGATION EQUIPMENT Raymarine E125 Chartplotter / GPS with external GPS and 12" inch brilliant multifunction display at lower helm and upper helm
 Raymarine SHD digital colour radar with 48" 4kW scanner
 Raymarine AIS class B transponder
 Rear camera positioned on stern
 Echo max European version plotter charts
 EU version VHF
 Dual station instrumentation, controls and alarms including VHF /RT, speed and distance log
 DECK EQUIPMENT Electro hydraulic swimming platform
 Electric stern docking winches
 Teak laid transom platform / cockpit and flybridge
 Dual station remote control searchlight
 Upholstered seating with teak table
 Hatch to engine room / lazarette
 Large upholstered seating area with teak table to flybridge
 Refrigerated top loading coolbox
 Flybridge wetbar including electric BBQ grill
 60m chain
 Foredeck freshwater anchor / deckwash system
 Williams 285 tender available by separate negotiation
 SHIP'S SYSTEMS Variable speed bow and stern thrusters with hold function docking facility and dual station controls
 UK 220v / 240v sockets
 Holding tank
 60 amp battery charger
 4 x heavy duty batteries for engine starting
 Automatic electric bilge pumps
 GENERATOR ONAN 11 kW diesel generator

Basic Information

Category: Motor Yacht

Model Year: 2014

Year Built: 2014

Country: United Kingdom

Fly Bridge: Yes

Cockpit: Yes

Dimensions

LOA: 55' 2" (16.80m)

Beam: 15' 2" (4.60m)

Max Draft: 4' 2" (1.25m)

Speed, Capacities and Weight

Cruise Speed: 23 Kts. (26 MPH)

Max Speed: 29 Kts. (33 MPH)

Displacement: 54233.716452 Pounds

Water Capacity: 159.82409146 Gallons

Fuel Capacity: 634.0129248 Gallons

Accommodations

Total Cabins: 3

Total Berths: 6

Total Heads: 2

Crew Cabin: 1

Crew Heads: 1

Hull and Deck Information

Hull Material: GRP

Deck Material: Teak and Fiberglass

Hull Color: white

Engine Information

Engines: 2

Manufacturer: Volvo

Model: D11

Engine Type: Inboard

Fuel Type: Diesel

PHOTOS

img41



img42



img43



img44



img45



img46



img47



img48



img49



img50



img51



img52



img53



img54



img55



img56



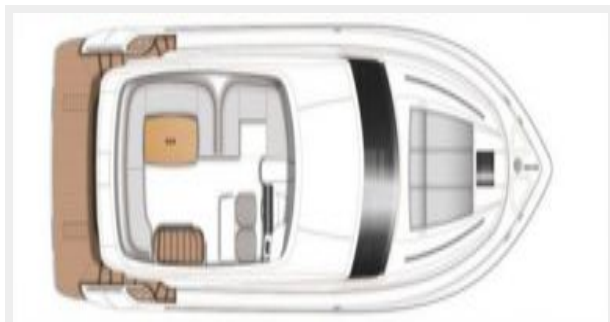
img57



img58



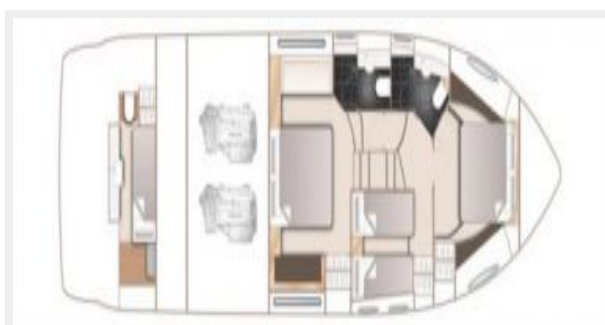
флай



мейн



ловер



CONTACTS

Andrey Shestakov, leading yacht broker of the sales department of Atlantic Yacht and Ship Inc. Atlantic Yacht and Ship Inc., the official representative of the Miami/Fort Lauderdale FL headquarters.

Contact details

Email: info@atlanticyachtandship.ru

Web: www.atlanticyachtandship.ru/en/

Telephones

USA: +1 954 274-4435

RUS: +7 495 766-6268

Office hours

Monday – Saturday: **9:00 - 21:00** EDT

Sunday: **closed**

Address



Harbour Towne Marina, 850 NE 3rd St,
STE 213, Dania, FL 33004