



THE SHADOW — FAIRLINE



Builder: [FAIRLINE](#)

Year Built: 2015

Model: Motor Yacht

Price: PRICE ON APPLICATION

Location: United States

LOA: 39' 10" (12.14m)

Beam: 11' 11" (3.63m)

Max Draft: 4' 0" (1.22m)

Max Speed: 44 Kts. (51 MPH)

Our experienced yacht broker, Andrey Shestakov, will help you choose and buy a yacht that best suits your needs **The Shadow — FAIRLINE** from our catalogue. Presently, at Atlantic Yacht and Ship Inc., we have a wide variety of yachts available on our sale's list. We also work in close contact with all the big yacht manufacturers from all over the world.

If you would like to buy a yacht **The Shadow — FAIRLINE** or would like help answering any questions concerning purchasing, selling or chartering a yacht, please call +1 954 274-4435

TABLE OF CONTENTS

TABLE OF CONTENTS	2
SPECIFICATIONS	4
Overview	4
Basic Information	4
Dimensions	4
Speed, Capacities and Weight	4
Accommodations	4
Hull and Deck Information	5
Engine Information	5
DETAILED INFORMATION	6
Options	6
Hull and Construction	7
Deck	7
Cockpit	8
Salon	9
Master Stateroom	10
Guest Stateroom	10
Head	11
Galley	11
Engines	12
Electrical	12
Helm	13
Disclaimer	14
Exclusions	14
Disclaimer	14
PHOTOS	15
CONTACTS	21
Contact details	21

Telephones	21
Office hours	21
Address	21

SPECIFICATIONS

Overview

This special edition Fairline has a striking sense of style and flair, it immediately gives the impression that it is capable of something quite spectacular. And it won't disappoint, for the Shadow-S is quite simply the fastest Fairline to date putting a thrilling 44 knots at your fingertips thanks to its Volvo Penta D6-400 engines.

With all that power in mind, the Shadow-S has been styled for speed. Consider the graphite coloured hard top and hull band, the reflective silver glazing, the titanium deck colour that compliments the carbon fibre detailing. And upholstery that reflects the sporty but equally luxurious intentions of this special edition, with burnt orange leather framed with woven carbon piping. With its head-turning styling and high-speed capabilities, there's one thing the Targa 38 Shadow-S can promise to deliver. The power to impress.

Basic Information

Category: Motor Yacht

Sub Category: Sport Cruiser

Model Year: 2015

Year Built: 2015

Country: United States

Dimensions

LOA: 39' 10" (12.14m)

Beam: 11' 11" (3.63m)

Max Draft: 4' 0" (1.22m)

MFG Length: 38' 0" (11.58m)

Speed, Capacities and Weight

Max Speed: 44 Kts. (51 MPH)

Accommodations

Total Cabins: 2

Total Heads: 1

Hull and Deck Information

Hull Material: Fiberglass

Hull Configuration: Deep Vee

Engine Information

Engines: 2

Manufacturer: Volvo Penta

Model: D6-400 EVC Primary

Engine Type: Inboard

Fuel Type: Diesel

DETAILED INFORMATION

Options

- Volvo joystick
- walnut gloss or wenge gloss
- air conditioning tropical and domestic appliance pack with ceramic hob, microwave, cockpit bar/refrigerator and 7kW generator
- 19" TV with fusion AV700 DVD/radio and wireless connectivity to saloon
- inverter and breaker – enables audio/visual equipment to run on 12V DC
- BBQ griddle in cockpit – mains voltage
- Garmin GHP 10 autopilot for use with joystick option
- Garmin GMR 18 HD Radome 4kW (includes light mast upgrade)
- Garmin GPSmap 6012 (12") display to helm
- synthetic decking to side decks
- powered hydraulic submersible bathing platform – 350kg lifting capacity
- sofa bed convertible to 3 rd berth in aft cabin (see interior page for fabric choices)
- mood lighting to cabins
- orange underwater lights x 6
- passerelle preparation
- bow thruster
- holding tank with macerator, diverter for sea discharge and deck pump-out
- skylight in galley
- bed conversion for settee in main saloon
- shore power cord
- speakers to cockpit with Fusion NRX200 wired remote
- painted hull colour to be extended down to the water line

Hull and Construction

- All gel coat and glass fibre hand laid with unidirectional, biaxial and woven rovings
- Antifouling protection to hull
- Deep 'V' forward; 18° deadrise aft
- Design, layout and detailing by the Fairline Design Team. Naval architecture and structural engineering by Bernard Olesinski
- Full length moulded spray deflectors
- Hull/deck join bolted and bonded
- Integrally moulded engine bearers
- Isophthalic gel coat backed by isophthalic resin-rich powder-bound glass mat
- The deck incorporates polyurethane foam cores for high strength and excellent thermal insulation
- Transverse and longitudinal strengthening stringers throughout hull

Deck

- Anchor chain locker
- Anchor winch (electric)
- Anchor winch controls
- Calibrated anchor chain
- Concealed telescopic swim ladder to bathing platform
- Ensign and staff
- Fender set
- Full set of IMCO navigation lights
- Hot and cold water transom shower
- Moulded non-slip deck surface
- Recessed self-draining area on foredeck for coachroof sun cushions

- Riding light
- Rubbing strake
- Self-stowing Delta® anchor
- Stainless Steel bow, spring and stern cleats
- Stainless Steel bow fairlead(s)
- Stainless Steel handrails
- Stainless Steel pulpit
- Stainless Steel stemhead roller
- Stainless Steel transom wing cleats
- Teak laid bathing platform
- Toughened glass curved windscreen
- Transom gate from cockpit to integral bathing platform
- Twin horns
- Water filler(s)
- Windscreen washers
- Windscreen wipers

Cockpit

- 12V heavy duty weatherproof socket
- Bathing platform lights
- Boat hook
- Central dining area
- Cockpit bar with sink, hot and cold water and integrated waste bin
- Cockpit carpet
- Cockpit hood on stainless steel frame, converting to sun canopy
- Companion seating to helm

-
- Drinks holders
 - Engine bay access hatch with stainless steel electric ram
 - Fender stowage
 - Glove locker
 - Life raft stowage
 - Manual bilge pump(s)
 - Mooring warps
 - Moulded non-slip deck surface
 - Radar arch with down-lighting
 - Stainless Steel handrails
 - Step for side deck access
 - Stowage lockers under cockpit seat
 - Warp lockers

Salon

- 19" flatscreen TV with Video iBoat dock
- Access to day heads
- Aerial and connections for television
- Cocktail table converts to dining table
- Curved companionway timber steps with solid wood handrail
- Deck hatch with flyscreen and blind
- Full-height standing headroom
- LED ceiling lights
- Lockers (overhead)
- Panoramic hull windows
- Sliding door to cockpit with integral blind system

- Sofa
- Stowage lockers under dinette seating
- Underfloor stowage hold

Master Stateroom

- Access to shower/wc compartment
- Bedside stowage
- Full-height standing headroom
- Halogen ceiling lights
- Hatch to foredeck
- Headboard shelf unit
- LED ceiling lights
- Lockers (overhead)
- Mirror • Moulded stowage locker under hinged bedboard for optional stool stowage
- Oversized double bed
- Stainless Steel opening porthole(s) with flyscreen
- Twin trinket lockers
- Wardrobe(s) Aft

Guest Stateroom

- Bedside stowage
- Chest of drawers
- Full length berths x 2 with conversion to double bed
- LED ceiling lights
- Headboard shelf unit
- Mirror

- Opening window to cockpit
- Reading lights
- Stainless Steel opening porthole(s) with flyscreen
- Vanity unit
- Wardrobe(s)

Head

- 220V/240V shaving point
- Automatic shower tray pump-out system • Electric silent-flush freshwater toilet
- Extractor fan
- Foundations® vanity unit locker and basin with hot and cold pressurised water
- Full set of bathroom fittings
- Full standing height shower with integral shower tray, adaptable shower head and rotating screen
- Hand Basin with hot and cold water
- Mirror
- Stainless Steel opening porthole(s) with flyscreen
- Stowage locker

Galley

- 2-burner gas hob, oven and grill
- Control panel for 12V/240V domestic electrical circuits
- Crockery stowage
- Fire extinguisher
- Foundations® work surface with covers
- LED ceiling lights

- Integrated waste bin
- Lacquered cupboard doors
- Lockers (overhead) • Panoramic hull windows
- Refrigerator 4.6cu.ft. (130L) with automatic 12V/240V change-over
- Sink/drainage with hot and cold mixer tap
- Work surface lights

Engines

- Aerodynamically designed engine air intakes
- Automatic bilge pumps for engine bay with manual 'on' override
- Automatic engine bay fire extinguisher system
- Electric engine bay fan(s)
- Electric trim tabs with cathodic protection
- Engine bay lights
- Engine room soundproofing
- High capacity emergency manual bilge pump system with changeover valves
- Sea cocks on all inlets/outlets below waterline

Electrical

- All 240V, 24V and 12V circuits (where applicable) protected by circuit breakers with main electrical load control panel
- Heavy duty circuit breakers
- Isolating switches to all batteries 12 Volt • Batteries - 2 x heavy duty batteries for domestic services
- Battery - 1 x heavy duty battery for exclusive port engine starting
- Battery - 1 x heavy duty battery for exclusive starboard engine starting
- Emergency battery coupling system permits starboard engine battery to start port engine if

domestic batteries accidentally discharged 240 Volt

- Polarity check and earth leakage protection system
- Power points throughout the boat (fed from shore power or generator)
- Regulated battery charger
- Shore power supply

Helm

- 12V socket
- Bilge pump switches with integral operating warning lights and audible alarms
- Bolstered helm seat
- Chart stowage
- Chart table and light
- Co-pilot grab rail
- Controls for engine bay fire extinguisher system
- Drinks holders
- Electronic single-lever throttle and gear controls for port and starboard engines
- Folding foot plinth
- Fuel gauges
- Full engine instrumentation including; tachometers, oil pressure gauges, temperature gauges, battery condition indicators, audible alarms and engine hour meters
- Garmin GMI 10 digital multi-function instrument system with colour display
- Garmin VHF 300i marine radio
- Helm position indicator
- High speed magnetic compass
- Remote anchor winch controls
- Searchlight with remote control at helm

- Sterndrive trim controls
- Waterproof switches for navigation and riding lights, windscreen wipers and engine bay extractor fan(s)

Disclaimer

The Company offers the details of this vessel in good faith but cannot guarantee or warrant the accuracy of this information nor warrant the condition of the vessel. A buyer should instruct his agents, or his surveyors, to investigate such details as the buyer desires validated. This vessel is offered subject to prior sale, price change, or withdrawal without notice.

Exclusions

Owner's personal belongings. Owner's personal toys, including but not limited Jet-skis, Tenders, Sea Bobs, Fishing & Diving equipment.

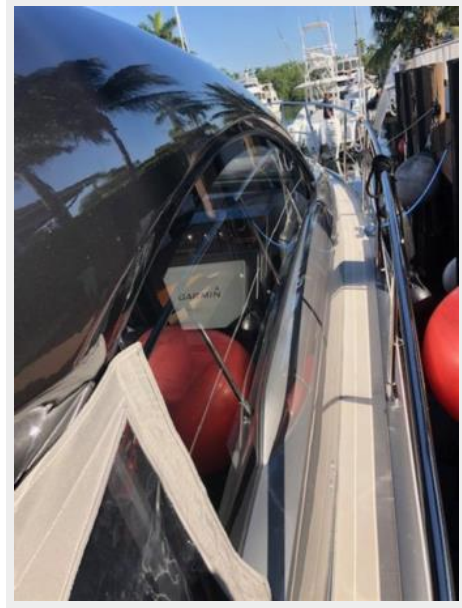
Disclaimer

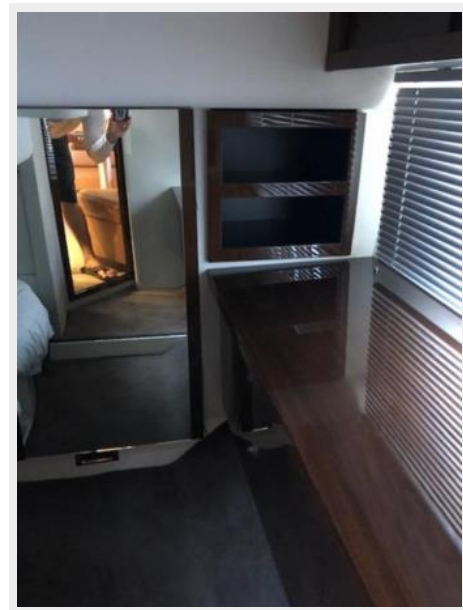
The Company offers the details of this vessel or yacht in good faith but cannot guarantee or warrant the accuracy of this information nor warrant the condition of the vessel. A buyer should instruct his representatives, agents, or his surveyors, to investigate such details as the buyer desires validated. This vessel or yacht is offered subject to prior sale, price change, or withdrawal without notice.

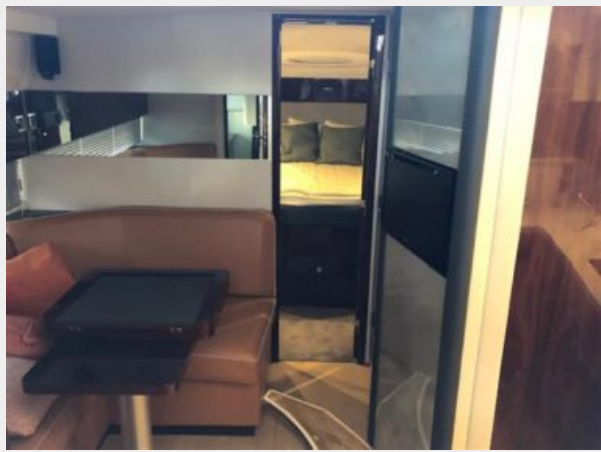
PHOTOS

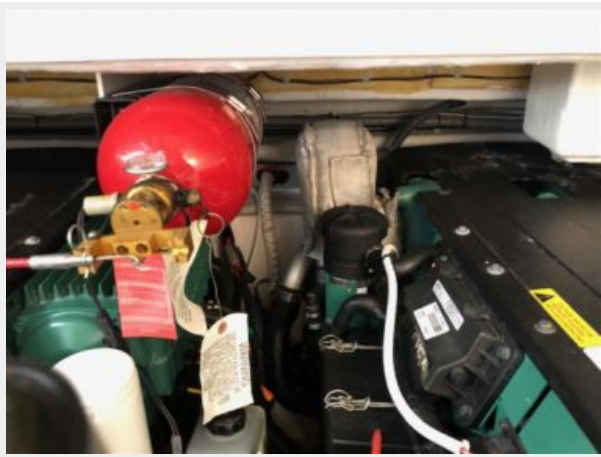












CONTACTS

Andrey Shestakov, leading yacht broker of the sales department of Atlantic Yacht and Ship Inc. Atlantic Yacht and Ship Inc., the official representative of the Miami/Fort Lauderdale FL headquarters.

Contact details

Email: info@atlanticyachtandship.ru

Web: www.atlanticyachtandship.ru/en/

Telephones

USA: +1 954 274-4435

RUS: +7 495 766-6268

Office hours

Monday – Saturday: **9:00 - 21:00** EDT

Sunday: **closed**

Address



Harbour Towne Marina, 850 NE 3rd St,
STE 213, Dania, FL 33004