



PIONEER CABIN — CAMBRIA



Судостроитель: CAMBRIA

Год постройки: 1993

Модель: Cruising/Racing Sailboat

Цена: \$265,000 USD Продано

Местонахождение: United States

Длина общая: 46' 0" (14.02m)

Ширина: 13' 5" (4.09m)

Мин. осадка: 5' 8" (1.73m)

Макс. осадка: 9' 0" (2.74m)

Крейс. скорость: 8 Kts. (9 MPH)

Макс. скорость: 9 Kts. (10 MPH)

Купить **PIONEER CABIN — CAMBRIA** а также выбрать подходящую вам яхту из нашего каталога яхт вам поможет опытный яхтенный брокер Андрей Шестаков. На сегодняшний день компания **Atlantic Yacht and Ship Inc.** имеет большое количество яхт в собственном списке продаж, а также тесно сотрудничает со всеми крупными яхтенными производителями по всему миру.

Для того чтобы купить яхту **PIONEER CABIN — CAMBRIA** а также проконсультироваться по любому вопросу связанному с покупкой, продажей, чартером яхт позвоните по телефону **8 800 234-4456** (бесплатно по РФ).

ОГЛАВЛЕНИЕ

ОГЛАВЛЕНИЕ	2
ХАРАКТЕРИСТИКИ	3
Основная информация	3
Размеры	3
Скорость, вместимость и масса	3
Размещение	3
Корпус и палуба	4
Информация о двигателе	4
ПОДРОБНОЕ ОПИСАНИЕ	5
Accommodations	5
Electronics and Navigational Equipment	5
Electrical System	6
Sails and Rigging	6
Engine /Mechanical Equipment	7
Plumbing System	7
Other Features and Equipment *	7
Исключения	8
Отказ от ответственности	8
ФОТОГРАФИИ	9
Sailplan	9
Berth	10
КОНТАКТЫ	11
Контактная информация	11
Телефоны	11
Время работы	11
Адрес	11

ХАРАКТЕРИСТИКИ

Основная информация

Тип судна: Cruising/Racing Sailboat	Модельный год: 1993
Год постройки: 1993	Страна: United States

Размеры

Длина общая: 46' 0" (14.02m)	Длина по ватерлинии: 37' 2" (11.33m)
Ширина: 13' 5" (4.09m)	Мин. осадка: 5' 8" (1.73m)
Макс. осадка: 9' 0" (2.74m)	Трапы: 64' 0" (19.51m)

Скорость, вместимость и масса

Крейс. скорость: 8 Kts. (9 MPH)	Крейсерская скорость поворота: 2200 Kts.
Макс. скорость: 9 Kts. (10 MPH)	Макс. скорость поворота: 2600 Kts.
Вместимость воды: 140 Gallons	Вместимость сточного бака: 15 Gallons
Объем топливного бака: 120 Gallons	

Размещение

Всего коек: 1	Спальные места: 1
Всего ком. состава: 1	Койки экипажа: 1
Спальных мест экипажа: 1	Комм. состав экипажа: 1

Корпус и палуба

Материал корпуса: Fiberglass

Материал палубы: Teak

Отделка корпуса: Fiberglass

Дизайнер корпуса: David Walters

Информация о двигателе

Двигатели: 1

Производитель: Yanmar

Модель: JH2HT Turbo

Тип двигателя: Inboard

Тип топлива: Diesel

ПОДРОБНОЕ ОПИСАНИЕ

Accommodations

PIONEER CABIN has a three cabin, two companionway interior. The aft cabin has a full size double quarter berth, a hanging locker, drawer and shelf space and a head with full shower stall. This cabin also contains the navigation station with a book case and is accessed from the aft cockpit. Owner's cabin has ensuite head with large stall shower and sink. The center cabin contains the galley, settees, bookcases, stowage and the entertainment center. The galley has a three burner Force 10 stove with oven and broiler and a microwave. The stove area has a stainless crash bar and attachment points for a galley safety belt. The counter tops are Corian and there is a fold down shelf for extra galley work space. There is a large locker for dish and glass stowage, and three cabinets for food and utensil stowage. The main part of the cabin has been extensively customized with two ultrasuede covered settees (new 1999), port and starboard bookcases and locker, all finished in satin varnished teak with white trim. There is additional stowage behind the settee cushions and under the cushions around the water tanks. All the lockers on **PIONEER CABIN** have positive locking catches to prevent lockers from opening in a seaway. There are also port and starboard pipe berths behind the settee cushions. All berths have weather cloths for secure sleeping. The entertainment center consists of a TV/VCR; and AM/FM radio with cassette deck and CD player. There are speakers port and starboard as well as the aft cabin and in the main cockpit. The TV has its own antenna and can be hooked into a shore side cable system if available. There is custom storage built in for CD's and tapes. The dining table is teak with an ash border. With both sides open it can easily accommodate 6 people. There are 5 opening ports in the main cabin as well as a large overhead translucent hatch and one smaller hatch. The large hatch can be opened either forward or aft. The main cabin is light and airy with plenty of natural ventilation. There are numerous energy efficient, quiet fans placed throughout the boat. The forward cabin has a queen sized V-berth, hanging locker, shelf and locker storage and a commodious storage area under the berth. There is also a large opening hatch over the berth to give excellent ventilation to the whole cabin. The forward head opens directly into the forward cabin as well as into the main cabin. It is also equipped with a stand-up shower, sink and commode. This three cabin arrangement with two companionways and two separate heads also provides comfort and privacy for two couples or a family with children.

Electronics and Navigational Equipment

PIONEER CABIN has state of the art electronics with many upgrades done as equipment changes were made. The cornerstone of the system is the KVH Quadro system. The system allows monitoring of over 40 boat functions including boat speed, speed over ground, true and apparent wind speed and direction and many others. There are two digital and one analog (wind direction) display on the starboard bulkhead as well as separate displays at the wheel and down below in the Nav station. All are controlled by centrally located key pads and give all sailing parameters, navigation data and if desired, performance data. The KVH system is tied into a KVH

Fluxgate compass as well as the Trimble Navgraphic GPS which includes the CD ROM driven chart plotter and the Furuno radar. The radar antenna is located on a stern mounted Edson pole with a hydraulic tilting platform (allows the radar to remain level regardless of the angle of heel.) The radar display, while permanently mounted in the Nav station, can also be mounted on the cabin top under the full width dodger. This allows the helmsman constant access to the radar screen without the need to leave the wheel. The autopilot is a below decks installation. It is the Autohelm 6000 and can be controlled either from the helm station or at the companionway under the dodger. This allows the helms person to get out of the weather and still remain topsides to see and steer. The auto pilot is also connected to the GPS and allows the pilot to correct for leeway or cross track error when sailing. It is a mechanical ram unit with barely discernable drag on the wheel when not engaged. Settings are simple and straight forward and the unit itself is very energy efficient.

Electrical System

Custom designed Bass electrical panel with digital voltmeter, ammeter for both DC and AC Three 8D (240amp hrs. each) Gel cell house batteries. (new 2000) Two 110amp hrs. Gel cell engine starting batteries (new 1999) Batteries are switched separately with an emergency override if needed. Heart inverter/charger- 2800 watts Most cabin lights are Alpenglow fluorescents for low power draw.

Sails and Rigging

Spars are by Hall Spars and the boat is Cutter-rigged. Shrouds and stays are Navtec rod rigging. **PIONEER CABIN** has a Navtec hydraulic backstay adjuster and hydraulic boom vang. All halyards are internal. There are two genoa halyards, a spinnaker halyard, pole topping lift, staysail halyard and main halyard. The staysail and headsail have Profurl furling. All sails are U.K. All reef lines, furling lines and the Main halyard are led back to the cockpit. Sails consist of newer U.K. Sails, Main and Genoa (2002 - Spectra), Staysail (2003 Dacron), 95% Spectra tape drive Yankee, Storm Staysail and Assymetrical Spinnaker. All sails are in excellent condition. There is a seperate track on the mast for the Storm Trisail. The boat has full spinnaker gear with a mast stowed pole and a reaching strut. The deck layout of the boat was extensively customized to allow all sail handling from the cockpit. All winches are Barients and were upgraded one size over the standard inventory to allow for easier sail handling. There is an electric winch on the cockpit cabin top to which all lines can be led if desired. It is used to raise the mainsail, control the main sheet and reef lines. There are pad eyes located along the deck for easy rigging of safety lines from bow to cockpit locker as well as a large lazarette, and a shallow locker for winch handles, blocks etc. **PIONEER CABIN** is fitted with an Edson offshore Steering system with a leather covered 40" wheel, Harken roller bearings and a skeg mounted rudder. Steering is light and the boat is easily balanced on all points of sail.; Muir electric windlass with Delta 55 lb anchor [all chain rode] plus a Fortress 35 lb anchor with chain and nylon rode.

Engine /Mechanical Equipment

- Yanmar 75HP turbo diesel with approx 2200hrs
- Balmar 150amp alternator with "smart" voltage regulator
- Kubota diesel D.C. generator (new 2001) with 150amp Balmar alternator and direct drive Reverse Osmosis watermaker- Capacity 20 gallons/hr.
- Dual Manifold high capacity Racor filters
- Maxprop 3 bladed adjustable prop (rebuilt 2003)
- Lasdrop stuffing box on shaft log
- Engine mounted high output bilge pump
- Sea Frost refrigerator and separate freezer
- Direct engine drive and 110V shore power compressor

Plumbing System

- Two 75gal. aluminum water tanks under settees with manifold
- Water maker leads directly to either port or starboard tank. All water tanks vented inside the boat
- Mechanical gauges on tanks
- 110gal. custom designed fiberglass diesel fuel tank with easily accessed sump and inspection ports.
- 15gal. stainless steel Balmar hot water heater- engine and shore power heating. (new 2000)
- Heavy duty Par fresh waterpump
- Manual fresh water foot pumps at galley sink and both heads
- Manual saltwater pump at the galley sink
- Refrigeration/freezer sump drain to galley sink
- Galley sink has manual pump to allow use on any tack; head sinks are molded Corian and have electric pumps to allow use on any tack.
- Galley sinks are custom designed stainless steel.
- Saltwater wash down pump at bow.
- Full stall shower in aft head, hand held shower in forward head. Both sumped overboard
- Cockpit fresh hot & cold water shower.
- Wilcox Crittenden heads
- 4 Bilge pumps-2 Edson high output manual, 1 engine driven very high output pump, 1 Par automatic electric bilgepump with bilge alarm.

Other Features and Equipment *

PIONEER CABIN is a 1993 Cambria 46. The boat was built by Cabo Rico Yachts using the molds and lay up schedule designed by David Walters. The yacht is solid lay up below the waterline, cored hull above and cored deck. **PIONEER CABIN** is a keel centerboard boat with the centerboard pennant led to the cockpit. The deck is overlaid with teak bonded to the subdecking with no screws penetrating the sub deck. The hull is flag blue Awlgrip with an

Awlgrip clear coat (new 1998). All thru hulls are bronze ball valve type and are inset flush to the hull. **PIONEER CABIN** was designed specifically to be easy to sail for a short handed crew but with enough room and stowage space to allow for long passages with additional crew. She is a fast, easily sailed sea kindly boat that gets people where they are headed in safety and comfort. An inspection and survey will prove that **PIONEER CABIN** was designed and built for very experienced owners-and has been maintained to "as new condition". Highly recommended. *Tools, paper charts, cruising guide, medical kit, books, diving gear, outboard motor, Avon inflatable and all personal items not included in sale.

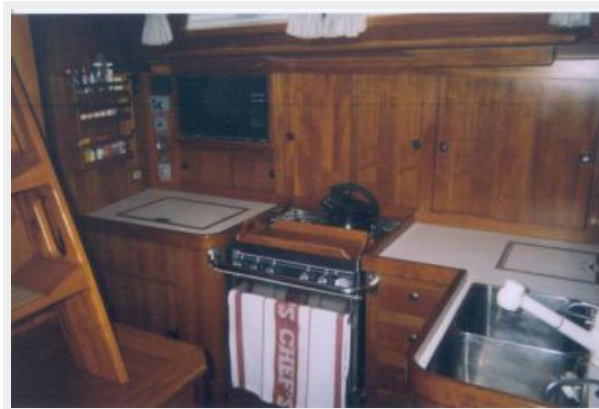
Исключения

При продаже яхты исключаются личные вещи владельца, личное оборудование, включая список предметов личного пользования владельца яхты, но не ограничиваясь гидроциклами, катерами, сибоб, снаряжением для рыбалки и дайвинга если таковые имеются на момент заключения сделки.

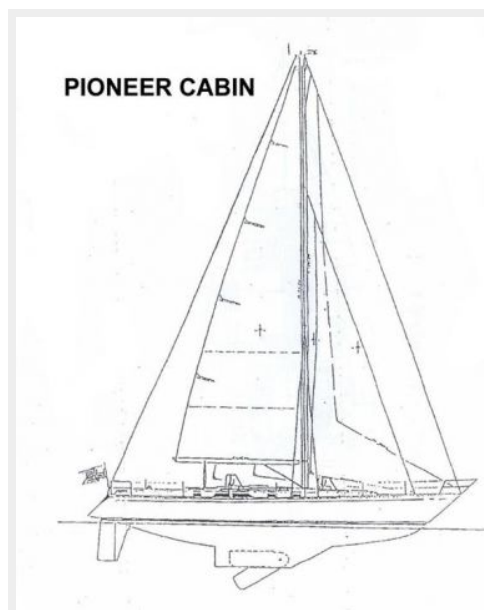
Отказ от ответственности

Компания предоставляет описание судна или яхты добросовестно, но не может гарантировать точность этой информации, а также не ручается за техническое состояние. Покупатель должен проинструктировать своих агентов или оценщиков исследовать представленную информацию более подробно, по собственному желанию. Продажа судна или яхты, изменение цены или снятие с продажи будет происходить без предварительного уведомления.

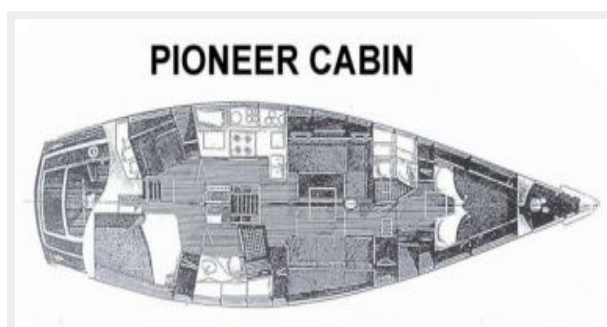
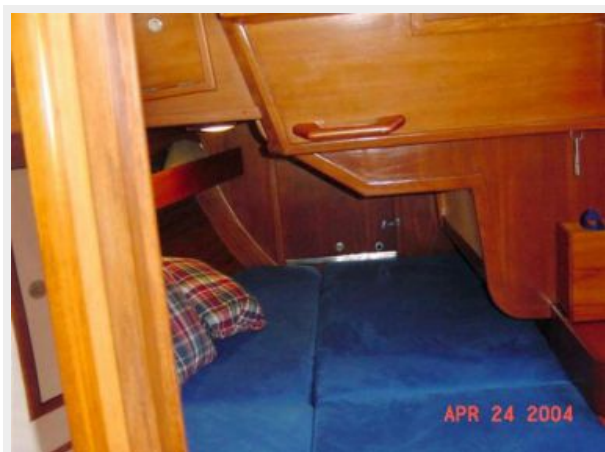
ФОТОГРАФИИ



Sailplan



Berth



КОНТАКТЫ

Андрей Шестаков (Andrey Shestakov) – ведущий яхтенный брокер отдела продаж яхт и судов компании Atlantic Yacht and Ship Inc. Официальный представитель Atlantic Yacht and Ship Inc. для русскоговорящих клиентов в центральном офисе компании в Майами/Форт Лодердейл/Флорида/США.

Контактная информация

Email: info@atlanticyachtandship.ru

Web: www.atlanticyachtandship.ru

Телефоны

Бесплатный звонок по России: **8 800 234-4456**

Москва и Московская область: **+7 495 766-6268**

Краснодарский край: **+7 918 465-6644**

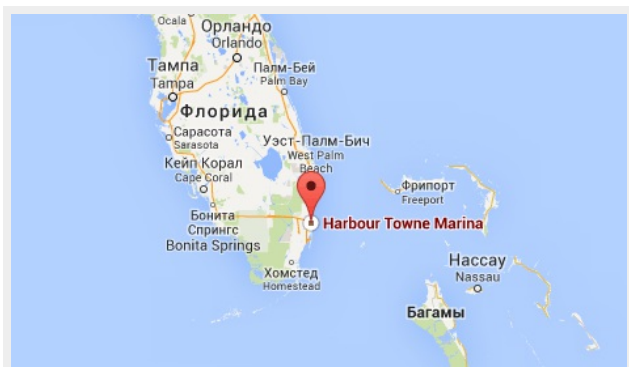
США, Майами, Флорида: **+1 954 274-4435**

Время работы

Понедельник – Суббота: **9:00 - 21:00**
EDT

Воскресенье: **Закрито**

Адрес



Harbour Towne Marina, 850 NE 3rd St,
STE 213, Dania, FL 33004