



CHARLIE THE BIRD — TUNG HWA MARINE



Builder: TUNG HWA MARINE

Year Built: 1980

Model: Cruising Sailboat

Price: 169 000 € EUR

Location: Spain

LOA: 64' 0" (19.50m)

Beam: 13' 6" (4.10m)

Max Draft: 7' 7" (2.30m)

Cruise Speed: 7 Kts. (8 MPH)

Max Speed: 10 Kts. (12 MPH)

Our experienced yacht broker, Andrey Shestakov, will help you choose and buy a yacht that best suits your needs **Charlie the Bird — TUNG HWA MARINE** from our catalogue. Presently, at Atlantic Yacht and Ship Inc., we have a wide variety of yachts available on our sale's list. We also work in close contact with all the big yacht manufacturers from all over the world.

If you would like to buy a yacht **Charlie the Bird — TUNG HWA MARINE** or would like help answering any questions concerning purchasing, selling or chartering a yacht, please call **+1 954 274-4435**

TABLE OF CONTENTS

TABLE OF CONTENTS	2
SPECIFICATIONS	4
Overview	4
Basic Information	4
Dimensions	4
Speed, Capacities and Weight	4
Accommodations	5
Hull and Deck Information	5
Engine Information	5
DETAILED INFORMATION	6
Sails and Rigging	6
Deck & Safety Equipment	6
Electronics and Navigational Equipment	6
Remarks	6
Engine /Mechanical Equipment	6
Accommodations	7
Exclusions	7
Disclaimer	7
PHOTOS	8
Charlie The Bird exterior	8
Charlie The Bird exterior 2	8
Charlie The Bird exterior 3	8
Charlie The Bird deck 2	9
Charlie The Bird deck	9
Charlie The Bird saloon 2	9
Charlie The Bird saloon	9
Charlie The Bird layout	10
Charlie The Bird guest	10

CONTACTS	13
Contact details	13
Telephones	13
Office hours	13
Address	13

SPECIFICATIONS

Overview

Built in 1980 under Claude GRAFF design. GRP Hand laid laminated with continuous diagonal in the direction of lines of force. One piece hull. Chain plates included in the lamination. Various thickness's ranging from 60mm keel sole, 34 mm gal board, 24 mm riboard, 20 mm to waterline and 17 mm topsides. 15mm Burma teak deck on top of 15 mm plywood. All bolt works and fittings are of s/s 316. Exceptionally strong building

Basic Information

Category: Cruising Sailboat

Model Year: 1980

Year Built: 1980

Refit Year: 2002

Country: Spain

Cockpit: Yes

Dimensions

LOA: 64' 0" (19.50m)

Beam: 13' 6" (4.10m)

Max Draft: 7' 7" (2.30m)

Speed, Capacities and Weight

Cruise Speed: 7 Kts. (8 MPH)

Cruise Speed Range: 800

Max Speed: 10 Kts. (12 MPH)

Water Capacity: 158.5032312 Gallons

Fuel Capacity: 132.086026 Gallons

Accommodations

Total Cabins: 2

Total Berths: 3

Sleeps: 4

Total Heads: 2

Crew Cabin: 1

Crew Berths: 2

Crew Sleeps: 2

Crew Heads: 1

Hull and Deck Information

Hull Material: GRP

Deck Material: Teak

Hull Configuration: Moderate Fin

Hull Color: White

Hull Finish: Fiberglass

Hull Designer: Claude Graff

Exterior Designer: Claude Graff

Engine Information

Engines: 1

Manufacturer: Perkins

Engine Type: Inboard

Fuel Type: Diesel

DETAILED INFORMATION

Sails and Rigging

Seven sails mainly by North Sails. Some by Neil Pryde. Full batten main & mizzen. Fore furling gear by Harken. Running rig by Marlow. Standing rig by Sarma. Mast and spars by Nirvana silver anodised. Stainless steel winches by Andersen.

Deck & Safety Equipment

New teak deck 2002. (including new plywood underneath) Two 65 lb. CQR anchors. One anchor with 400 ft of 3/8 galvanised chain and one with chain and warp. Inflatable dinghy with 4 hp Mercury outboard. Zodiac 6 persons liferaft. 3 bilge pumps (1) electric automatic (1) manual and (1) main engine driven with electro magnetic clutch. Pressurised hot and cold water throughout. Comprehensive equipment for navigation safety and domestic. Inventory excludes personal effects.

Electronics and Navigational Equipment

150 W. SSB and Marconi VHF Radiotelephones. Furuno 24 NM Radar. Furuno GPS. Furuno weather fax and navfax. Cetrek 626 autopilot linked to GPS. Walker Mentor 1100 system log. Depth sounder. Wind instruments & repeaters. Complete HiFi system.

Remarks

Built in 1980 under Claude GRAFF design. GRP Hand laid laminated with continuous diagonal in the direction of lines of force. One piece hull. Chain plates included in the lamination. Various thicknesses ranging from 60mm keel sole, 34 mm galboard, 24 mm riboard, 20 mm to waterline and 17 mm topsides. 15mm Burma teak deck on top of 15 mm plywood. All boltworks and fittings are of s/s 316. Exceptionally strong building Besides the fact that Charlie the Bird is one of the famous Chebecs, this one has been exceptionally well treated since 1990 and has received an International anti-osmosis treatment a new teak deck and new engine in 2002

Engine /Mechanical Equipment

ENGINES: Perkins M135 / New 2002 GEARBOX: Twin disc 2/1 Overhauled 2002
PROPELLERS: Three-bladed folding Luke Overhauled 2002 GENERATORS: Fisher Panda 3,5 kW
SPEED: Cruising 7,0 kts Maximum 10,0 kts RANGE: Nm approx. 800 CONSUMPTION: Approx. 8L/h depending upon sea conditions.

Accommodations

Cabin with Queen size bed Cabin with twin up/low berths Charlie the Bird accommodates 4 persons in two double cabins & 2 heads. The Owner's cabin is full aft with connecting shower room & toilet. The other up/low double bed cabin is located starboard side from the engine compartment. Large dining room with U-shaped settee facing a sofa. The galley is located in the passageway portside leading to the front cabin. There are three different accesses from deck.

Exclusions

Owner's personal belongings. Owner's personal toys, including but not limited Jet-skis, Tenders, Sea Bobs, Fishing & Diving equipment.

Disclaimer

The Company offers the details of this vessel or yacht in good faith but cannot guarantee or warrant the accuracy of this information nor warrant the condition of the vessel. A buyer should instruct his representatives, agents, or his surveyors, to investigate such details as the buyer desires validated. This vessel or yacht is offered subject to prior sale, price change, or withdrawal without notice.

PHOTOS

Charlie The Bird exterior 2



Charlie The Bird exterior



Charlie The Bird exterior 3



Charlie The Bird deck



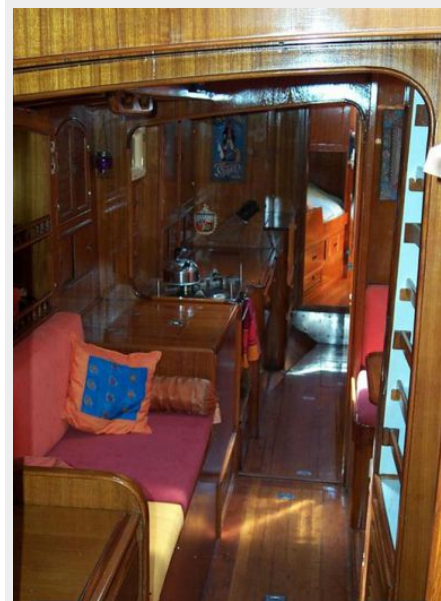
Charlie The Bird deck 2



Charlie The Bird saloon



Charlie The Bird saloon 2

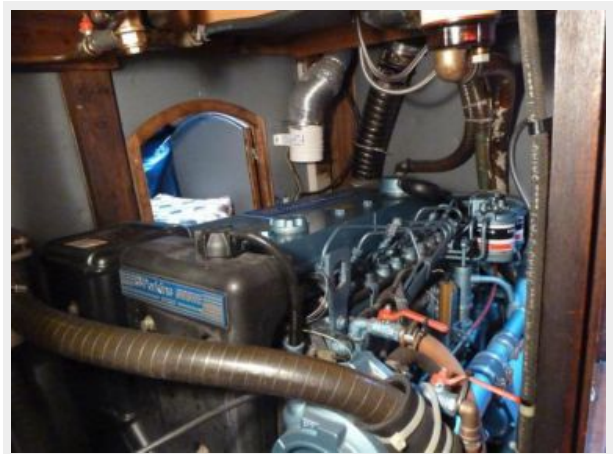
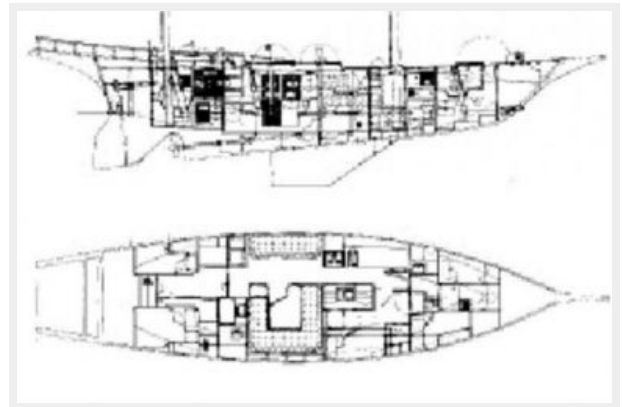
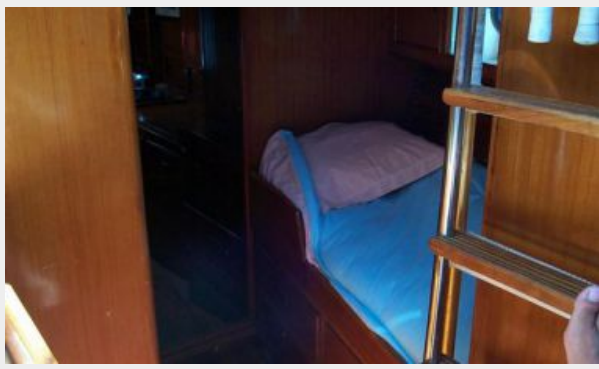




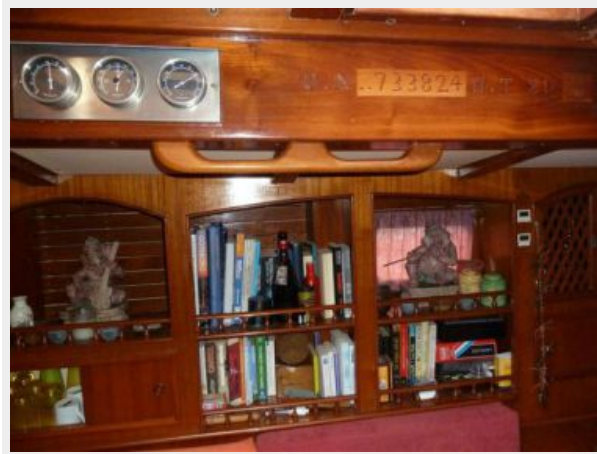
Charlie The Bird guest



Charlie The Bird layout







CONTACTS

Andrey Shestakov, leading yacht broker of the sales department of Atlantic Yacht and Ship Inc. Atlantic Yacht and Ship Inc., the official representative of the Miami/Fort Lauderdale FL headquarters.

Contact details

Email: info@atlanticyachtandship.ru

Web: www.atlanticyachtandship.ru/en/

Telephones

USA: +1 954 274-4435

RUS: +7 495 766-6268

Office hours

Monday – Saturday: **9:00 - 21:00** EDT

Sunday: **closed**

Address



Harbour Towne Marina, 850 NE 3rd St,
STE 213, Dania, FL 33004