



KASIA — BERTRAM



Builder: BERTRAM

Year Built: 1985

Model: Sport Fisherman

Price: ~~\$99,000-USD~~ Off the market

Location: United States

LOA: 46' 0" (14.02m)

Beam: 16' 0" (4.88m)

Min Draft: 4' 6" (1.37m)

Cruise Speed: 23 Kts. (26 MPH)

Max Speed: 28 Kts. (32 MPH)

Our experienced yacht broker, Andrey Shestakov, will help you choose and buy a yacht that best suits your needs **KASIA — BERTRAM** from our catalogue. Presently, at Atlantic Yacht and Ship Inc., we have a wide variety of yachts available on our sale's list. We also work in close contact with all the big yacht manufacturers from all over the world.

If you would like to buy a yacht **KASIA — BERTRAM** or would like help answering any questions concerning purchasing, selling or chartering a yacht, please call **+1 954 274-4435**

TABLE OF CONTENTS

TABLE OF CONTENTS	2
SPECIFICATIONS	4
Basic Information	4
Dimensions	4
Speed, Capacities and Weight	4
Accommodations	4
Hull and Deck Information	5
Engine Information	5
DETAILED INFORMATION	6
Accommodations	6
Salon	6
Galley/Laundry	6
Master Stateroom	6
Forward Guest Stateoom	6
Electronics	7
Electrical System	7
Deck Equipment	7
Fly Bridge	7
Cockpit/Fishing Equipment	7
Mechanical Equipment	8
Exclusions	8
Remarks	8
Exclusions	8
Disclaimer	8
PHOTOS	9
CONTACTS	12
Contact details	12

Telephones	12
Office hours	12
Address	12

SPECIFICATIONS

Basic Information

Category: Sport Fisherman

Sub Category: Convertible

Model Year: 1985

Year Built: 1985

Country: United States

Fly Bridge: Yes

Dimensions

LOA: 46' 0" (14.02m)

Beam: 16' 0" (4.88m)

Min Draft: 4' 6" (1.37m)

Clearance: 15' 6" (4.72m)

MFG Length: 46' 6" (14.17m)

Speed, Capacities and Weight

Cruise Speed: 23 Kts. (26 MPH)

Max Speed: 28 Kts. (32 MPH)

Displacement: 44900 Pounds

Water Capacity: 240 Gallons

Fuel Capacity: 700 Gallons

Accommodations

Total Cabins: 2

Total Berths: 4

Sleeps: 1

Total Heads: 1

Crew Berths: 1

Crew Sleeps: 1

Crew Heads: 1

Hull and Deck Information

Hull Material: Fiberglass

Hull Configuration: Deep Vee

Hull Color: White

Engine Information

Engines: 4

Manufacturer: Detroit Diesel/Allison

Model: 8V92TI

Engine Type: Inboard

Fuel Type: Diesel

DETAILED INFORMATION

Accommodations

Popular Bertram 46 with custom salon styling, teak interior, two staterooms, two heads and galley down layout.

Salon

- Single sliding salon door
- L-shaped white sectional
- Curved Lucite coffee table
- Entertainment center with TV
- Wet bar & sink with bottle storage
- Ample storage cabinets
- Mini blinds
- Matching custom lambrequins and headliner (over galley & dinette areas)
- Electrical panels behind teak cabinetry
- Black carpeting

Galley/Laundry

- Refrigerator/freezer
- Microwave oven
- 2-burner stove
- Garbage disposal
- Water heater
- Dockside fresh water; pressure system
- Combination clothes washer/dryer
- Cabinets & drawers for storage

Master Stateroom

Oversized double berth
Custom spread, shams, pillows, padded headboard & matching window shades
Private head with shower

Forward Guest Stateoom

Vee berths
Drawer storage beneath berths
Hanging locker
Custom spreads, shams, pillows,

padding wall treatment and porthole covers Opening hatch Access to chain locker

Electronics

- Raytheon 72-mile radar
- Furuno 1621 radar
- Furuno color depth sounder
- Icom M100 VHF radio
- Icom GP 270M2 GPS
- Magellan Map FX324 color GPS
- Datamarine speed & depth
- Datamarine digital depth
- Robertson AP2500 auto pilot
- Digital tachometers

Electrical System

- 15 kW Northern Lights generator (1994)
- New end 2003
- New batteries with parallel switch
- Battery chargers
- Raritan converter
- Dockside electrical cable

Deck Equipment

- Anchor
- Bow pulpit with anchor chute
- Galley Maid electric windlass
- U.S. Coast Guard safety package
- Life jackets & life ring
- Bow light
- Navigation light
- Spare propeller
- Spare shafts
- Dinghy davit
- Windshield cover

Fly Bridge

New welded Bimini top with enclosure w/sliding front windows; black canvas Twin helm chairs Bench seat forward of steering station 6 rod holders

Cockpit/Fishing Equipment

Release fighting chair w/canvas cover Rupp Triple Gold & Black Spreader Outriggers (2001)
Spreader lights 7 flush-mounted rod holders Transom door Fish box Custom transom baitwell
Wash down system Fresh & salt water hose coils Step box Cockpit sink Stereo speakers Cockpit
sunshade awning, black canvas

Mechanical Equipment

2 x 600 hp Detroit Diesel/Allison 8V91TI engines; Both engines rebuilt 2013 10 hrs
approximately

Exclusions

Owner's personal items.

Remarks

The Bertram 46, with her classic design for sport fish boats, is a proven rough-water performer and for many years had been the standard by which other production sportfishermen were measured. Her deep-V hull offers excellent handling and sea-keeping abilities and popularity is further marked by the long production run of the 46 model series over the years.

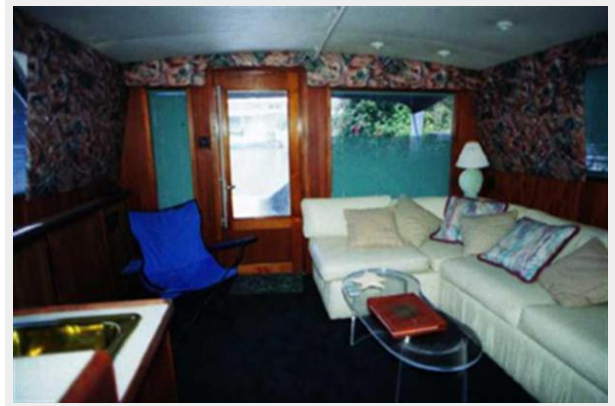
Exclusions

Owner's personal belongings. Owner's personal toys, including but not limited Jet-skis, Tenders, Sea Bobs, Fishing & Diving equipment.

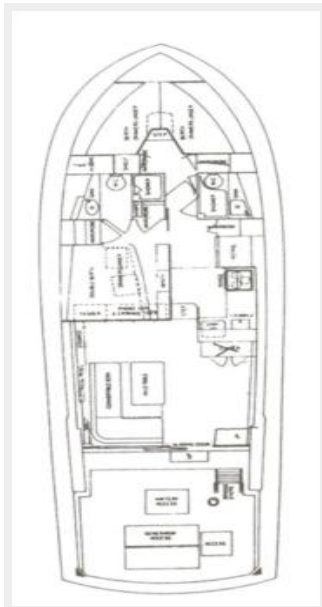
Disclaimer

The Company offers the details of this vessel or yacht in good faith but cannot guarantee or warrant the accuracy of this information nor warrant the condition of the vessel. A buyer should instruct his representatives, agents, or his surveyors, to investigate such details as the buyer desires validated. This vessel or yacht is offered subject to prior sale, price change, or withdrawal without notice.

PHOTOS







CONTACTS

Andrey Shestakov, leading yacht broker of the sales department of Atlantic Yacht and Ship Inc. Atlantic Yacht and Ship Inc., the official representative of the Miami/Fort Lauderdale FL headquarters.

Contact details

Email: info@atlanticyachtandship.ru

Web: www.atlanticyachtandship.ru/en/

Telephones

USA: +1 954 274-4435

RUS: +7 495 766-6268

Office hours

Monday – Saturday: **9:00 - 21:00** EDT

Sunday: **closed**

Address



Harbour Towne Marina, 850 NE 3rd St,
STE 213, Dania, FL 33004