



MOONBEAM IV — WILLIAM FIFE AND SON



Builder: WILLIAM FIFE AND SON

Year Built: 2001

Model: Classic Yacht

Price: PRICE ON APPLICATION

Location: Spain

LOA: 114' 11" (35.03m)

Beam: 17' 11" (5.46m)

Min Draft: 13' 11" (4.24m)

Max Draft: 13' 11" (4.24m)

Cruise Speed: 9 Kts. (10 MPH)

Max Speed: 10 Kts. (12 MPH)

Our experienced yacht broker, Andrey Shestakov, will help you choose and buy a yacht that best suits your needs **MOONBEAM IV — WILLIAM FIFE AND SON** from our catalogue. Presently, at Atlantic Yacht and Ship Inc., we have a wide variety of yachts available on our sale's list. We also work in close contact with all the big yacht manufacturers from all over the world.

If you would like to buy a yacht **MOONBEAM IV — WILLIAM FIFE AND SON** or would like help answering any questions concerning purchasing, selling or chartering a yacht, please call +1 954 274-4435

TABLE OF CONTENTS

| | |
|------------------------------|----|
| TABLE OF CONTENTS | 2 |
| SPECIFICATIONS | 3 |
| Overview | 3 |
| Basic Information | 3 |
| Dimensions | 4 |
| Speed, Capacities and Weight | 4 |
| Accommodations | 4 |
| Hull and Deck Information | 4 |
| Engine Information | 4 |
| DETAILED INFORMATION | 5 |
| Accommodations | 5 |
| Exclusions | 5 |
| Disclaimer | 5 |
| PHOTOS | 6 |
| CONTACTS | 13 |
| Contact details | 13 |
| Telephones | 13 |
| Office hours | 13 |
| Address | 13 |

SPECIFICATIONS

Overview

First launched in 1914 and commissioned after the Great War, in 1920, she is perhaps best described by Uffa Fox:

“No matter whether she is under way or at anchor, Moonbeam is beautiful to look upon, and combining the speed of a racer with the comfort of a cruiser, is a vessel any seaman would be proud to own.” The famous French sailor, Eric Tabarly, also wrote a letter to the owners, describing her as “the most beautiful yacht ever built”.

Owned for many years by Prince Rainier of Monaco, she was a familiar site all around the Mediterranean, playing host to many famous names. Following this era as a Bermudian Ketch, she suffered a period of neglect until rescued by her then owners in Greece, and later taken to Asia to be given a new lease of life. Thus in 2000 began a new period in this famous yacht’s history.

All the woodwork above and below decks is handcrafted to an exceptional standard by skilled craftsmen, using the finest woods. It was decided to return her to her 1927 rig, the towering “Marconi” Gaff Rig. All deck furniture is as original, and the interior layout is very similar to the original Fife design, with a few concessions to modern comforts. Everything from the exotic hardwood interior to the tip of the towering spruce mast was handpicked for beauty, authenticity and functionality. The bronze and other fittings are faithful copies of the original Fife designs. A full photographic history of the refit is available to interested parties showing the removal of the superb teak planking, the renewal of the steel frames as necessary, and the replacing of the original teak duly treated and using new bronze bolts. The 2001 restoration was too complete to be detailed here, but let us say that the original superb Fife hull has been saved in its entirety, but most of the vessel dates from that period, with improvements and modifications since.

Basic Information

Category: Classic Yacht

Model Year: 1914

Year Built: 2001

Refit Year: 2002

Country: Spain

Dimensions

LOA: 114' 11" (35.03m)

LOD: 95' 1" (28.98m)

Beam: 17' 11" (5.46m)

Min Draft: 13' 11" (4.24m)

Max Draft: 13' 11" (4.24m)

Speed, Capacities and Weight

Cruise Speed: 9 Kts. (10 MPH)

Max Speed: 10 Kts. (12 MPH)

Accommodations

Total Cabins: 3

Total Berths: 6

Sleeps: 6

Total Heads: 3

Crew Berths: 6

Hull and Deck Information

Hull Material: Teak

Engine Information

Engines: 1

Manufacturer: Lehman

Fuel Type: Diesel

DETAILED INFORMATION

Accommodations

N° of cabins: 5 cabins: 3 x Owner - 2 x Crew
N° of cabins en suite: 3 x Owner
N° of berths: 7 x Owner (2 double berths, 3 singles) and 7 x Crew (1 double and 5 singles)
N° of bathroom: 3 x Owner (3 showers and 1 bath) and 1 x Crew (shower)
The accommodation layout is very close to the original, with the addition of a real chart table and en-suite facilities for the guest cabins. From forward we have the crew foc'sle with 5 pipe coats. Aft of this to port is the fully fitted galley and to starboard the captain's double bedded cabin. Aft of the mast we have the main saloon beautifully panelled in local hard wood, with glass fronted lockers, an escritoire and numerous drawers. The original gimballed dining table is here with comfortable settees both sides. Aft of the saloon we have the main companion way leading up to the beautifully built doghouse and to starboard we have the twin bedded cabin with en-suite shower and toilet. Opposite this to port is the double berth guest cabin also with its own facilities. Just aft of the port cabin is the full size chart table with storage for navigational books, charts and some electronics. Further aft is the master stateroom with to port a double bunk and to starboard a single. The quality of craftsmanship throughout is excellent and the interior atmosphere very warm and welcoming. The layout is very similar to Fife's original drawings except for the addition of the chart table and en-suite facilities throughout. The saloon and guest accommodation is fully air-conditioned and the numerous large skylights offer ample natural light and ventilation.

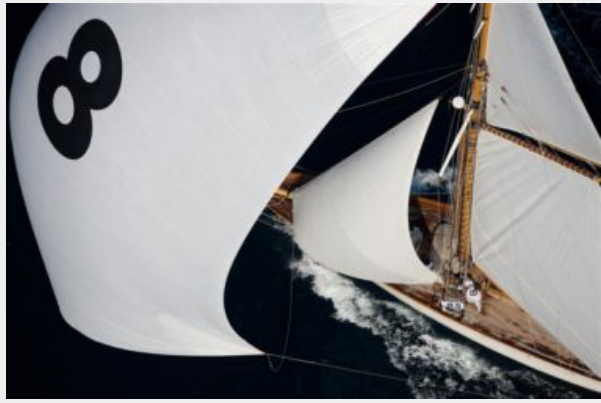
Exclusions

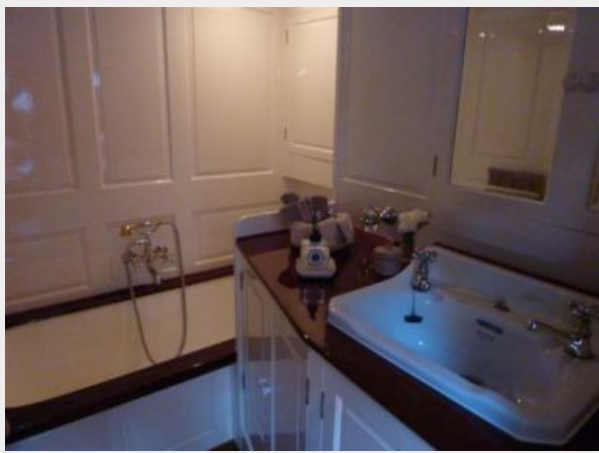
Owner's personal belongings. Owner's personal toys, including but not limited Jet-skis, Tenders, Sea Bobs, Fishing & Diving equipment.

Disclaimer

The Company offers the details of this vessel or yacht in good faith but cannot guarantee or warrant the accuracy of this information nor warrant the condition of the vessel. A buyer should instruct his representatives, agents, or his surveyors, to investigate such details as the buyer desires validated. This vessel or yacht is offered subject to prior sale, price change, or withdrawal without notice.

PHOTOS













Moonbeam IV Planning 2014

Legend:
• Regatta
• Cruising
• outboard work
• locations

| DECEMBER 2013 | JANUARY 2014 | FEBRUARY | MARCH | APRIL | MAY | JUNE |
|---------------|--------------|----------|-------|-------|----------|-----------|
| | | New Year | | | Polina | Adrian |
| | | | | | July Cup | Regatta |
| | | | | | Cannes | Monaco |
| | | | | | Corse | Portofino |
| | | | | | | Basil |

2014

| JULY | AUGUST | SEPTEMBER | OCTOBER | NOVEMBER | DECEMBER | JANUARY 2015 |
|----------------|--------|-----------|------------|----------|----------|--------------|
| Basil de Sable | | | St. Tropez | | | |
| Rig | | | Regatta | | | |
| | | | July Cup | | | |
| | | | Cannes | | | |
| | | | St. Tropez | | | |





CONTACTS

Andrey Shestakov, leading yacht broker of the sales department of Atlantic Yacht and Ship Inc. Atlantic Yacht and Ship Inc., the official representative of the Miami/Fort Lauderdale FL headquarters.

Contact details

Email: info@atlanticyachtandship.ru

Web: www.atlanticyachtandship.ru/en/

Telephones

USA: +1 954 274-4435

RUS: +7 495 766-6268

Office hours

Monday – Saturday: **9:00 - 21:00** EDT

Sunday: **closed**

Address



Harbour Towne Marina, 850 NE 3rd St,
STE 213, Dania, FL 33004