



## 7 DAY WEEKEND — POST



**Builder:** POST

**Year Built:** 1996

**Model:** Sport Fisherman

**Price:** ~~\$279,000 USD~~ Off the market

**Location:** United States

**LOA:** 46' 0" (14.02m)

**Beam:** 15' 9" (4.80m)

**Max Draft:** 4' 2" (1.27m)

**Cruise Speed:** 27 Kts. (31 MPH)

**Max Speed:** 31 Kts. (36 MPH)

Our experienced yacht broker, Andrey Shestakov, will help you choose and buy a yacht that best suits your needs **7 Day Weekend — POST** from our catalogue. Presently, at Atlantic Yacht and Ship Inc., we have a wide variety of yachts available on our **sale's** list. We also work in close contact with all the big **yacht manufacturers** from all over the world.

If you would like to buy a yacht **7 Day Weekend — POST** or would like help answering any questions concerning purchasing, selling or chartering a yacht, please call **+1 954 274-4435**

# TABLE OF CONTENTS

TABLE OF CONTENTS	2
SPECIFICATIONS	4
Basic Information	4
Dimensions	4
Speed, Capacities and Weight	4
Accommodations	4
Hull and Deck Information	4
Engine Information	5
DETAILED INFORMATION	6
Accommodations	6
Salon & Dinette	6
Galley	6
Master Stateroom/Head	7
Guest Stateroom/Head	7
Companionway	7
Electronics	7
Mechanical & Electrical	8
Cockpit & Fishing Equipment	8
Bridge	9
Foredeck & hardware	9
Exclusions	9
Disclaimer	9
PHOTOS	10
CONTACTS	14
Contact details	14
Telephones	14
Office hours	14

---

Address

14

---

# SPECIFICATIONS

---

## Basic Information

---

**Category:** Sport Fisherman

**Sub Category:** Convertible

**Model Year:** 1996

**Year Built:** 1996

**Country:** United States

## Dimensions

---

**LOA:** 46' 0" (14.02m)

**Beam:** 15' 9" (4.80m)

**Max Draft:** 4' 2" (1.27m)

## Speed, Capacities and Weight

---

**Cruise Speed:** 27 Kts. (31 MPH)

**Max Speed:** 31 Kts. (36 MPH)

**Displacement:** 44000 Pounds

**Water Capacity:** 120 Gallons

**Holding Tank:** 31 Gallons

**Fuel Capacity:** 620 Gallons

## Accommodations

---

**Total Berths:** 1

**Sleeps:** 1

**Total Heads:** 1

**Crew Berths:** 1

**Crew Sleeps:** 1

**Crew Heads:** 1

## Hull and Deck Information

---

**Hull Material:** Fiberglass

## Engine Information

---

**Engines:** 2

**Manufacturer:** Detroit Diesel

**Model:** 6V92DDEC's

**Engine Type:** Inboard

**Fuel Type:** Diesel

---

# DETAILED INFORMATION

---

## Accommodations

---

What really distinguishes the 46' Post from the other builders is her sensuous and graceful exterior styling. She also has cockpit engine room access entering the salon to port an L-shaped couch with table. To starboard a barrel chair w/ custom bar & icemaker. The high gloss teak interior has beige carpet and designer valances with blinds. Forward to starboard a dinette with L shape seating. The galley is midlevel to port. Down 2 steps to the companionway a washer & dryer. This is the preferred plan B layout with the master mid to starboard that features a full walkaround queen with ensuite head. Forward is the guest stateroom with vee berths and an ensuite head.

## Salon & Dinette

---

- L-shaped couch to port w/ storage underneath
- Teak table
- Barrel chair
- High gloss teak interior
- Beige carpet w/ clear runners
- Designer valances w/ blind & tinted windows
- Custom bar starboard u-line ice maker
- Harwich clock & barometer
- Over couch swing lamp
- 9 recessed overhead light on dimmers
- L-shape dinette seating
- High gloss teak dinette table

## Galley

---

- Galley is mid level to port
- Teak & holly floors
- 2 burner stove
- Sharp microwave
- Kenmore refrigerator/freezer
- White corian counter & sink w/ Moen faucet & soap dispenser
- Extra custom drawer added under cabinet fluorescent lighting
- 4 storage cabinets
- Large storage below galley sol

---

## Master Stateroom/Head

---

The master head features teak & holly floors, mirrored medicine cabinet, white corian countertop w/ Moen faucet hatch, Raritan head, under counter storage, 2 brass towel bars, 2 thin lights overhead and a full stall shower with seat, dome light & spigot with a brass trimmed glass shower door.

- Master is midship to starboard that features a walk around queen with ensuite head
- SMX AC controls
- 2 Storage cabinets
- Large lighted cedar lined hanging locker
- Carpet
- Vinyl wall coverings
- Mirror above bed
- Designer headboard
- 2 Starboard storage cabinets
- Mitsubishi TV
- 2 recessed overhead lights on dimmer

---

## Guest Stateroom/Head

---

The forward guest stateroom features double vee berths, hatch, 4 overhead recessed lights on dimmer, 2 reading lights, ample storage under berths, carpet, hanging locker, mirror, 4 over berth storage cabinet, overhead rod storage, AC controls, mirror and anchor locker access. **Guest head:** The guest head features teak & holly floor, white corian countertops and sink with Moen faucet, Raritan head, mirrored medicine cabinet, under sink storage, 2 overhead thin lights and a full stall shower w/ lights & Moen spigot with brass framed glass shower door.

---

## Companionway

---

Down 2 steps from the galley to port a Kenmore washer & dryer, central vac, overhead thin lights, carpet and vinyl wall coverings.

---

## Electronics

---

- Ritchee compass
- Furuno 48 mile radar
- Furuno chart plotter RP 110C
- Furuno FCV 582

- Furuno GP1650 GPS w/ differential
- Northstar 941
- Sea 166 VHF
- Robertson AP300X autopilot
- Standard digital depth gauge
- Standard digital temp gauge
- Two 19' Shakespeare VHF antenna
- GPS Pod antenna
- Furuno open array ray dome
- RCL 100 remote spotlight

## Mechanical & Electrical

---

- Detroit digital gauges
- Single lever controls
- ZF gears
- Johnson towers airseps
- 2 Pacor 1000 FG Filter
- Groco intakes
- Groco sea strainers
- Engine room light
- Engine room washdown
- Bilge blower
- Pro mariner charging system
- Halon system
- Reverse oil changer
- Water cooled shaft logs
- 8D Batteries
- Group 27 battery
- Onan 8KW genset with 1890 hrs
- Glenndenning cable master
- 12VD 110V AC 220 shore power
- Navigation lights
- Bilge pumps
- Bennett tabs
- Dual horns

## Cockpit & Fishing Equipment

---

- 2 Large removable in deck fish boxes
- 4 Lee Gunnel mount rod holder
- 6 Rod release rocket launcher
- 4 Aft tulip rod holders
- 6 Aft bridge tulip rod holders
- Port bait prep center w/ sink
- Tackle drawers
- Starboard freezer
- Transom door w/ gate
- Center rigger



- Rupp double spreader outriggers
- Dome light
- Engine room access
- 2 transom dive steps

---

## Bridge

---

The bridge features 2 overhead electronics boxes, 2 helm chairs, port couch forward of the helm couch, forward storage lockers, hard top with full Eison glass enclosure (2 side belly zips, 3 front belly zips), 2 aft spreader lights

---

## Foredeck & hardware

---

- Full aluminum bow rail with pulpit
- Lewmar windlass with two-foot switches
- 2 aft cleats with two hawse pipes
- 4 spring cleats
- 2 bow cleats with chocks

---

## Exclusions

---

Owner's personal belongings. Owner's personal toys, including but not limited Jet-skis, Tenders, Sea Bobs, Fishing & Diving equipment.

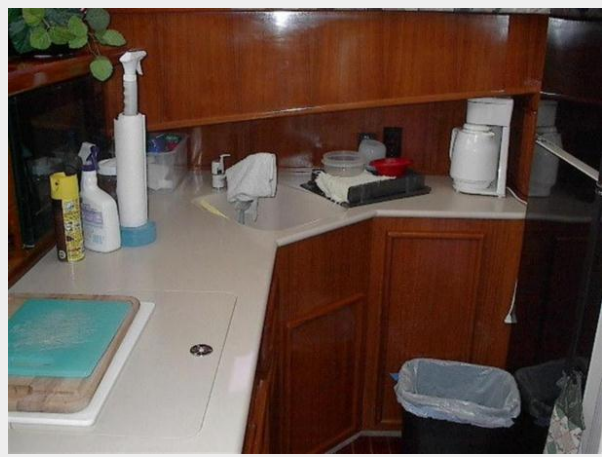
---

## Disclaimer

---

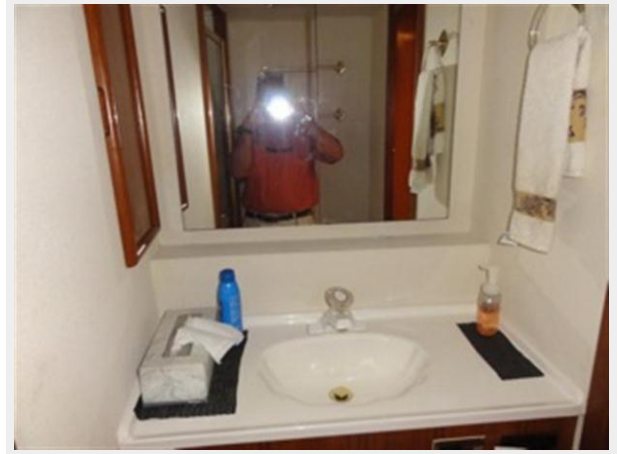
The Company offers the details of this vessel or yacht in good faith but cannot guarantee or warrant the accuracy of this information nor warrant the condition of the vessel. A buyer should instruct his representatives, agents, or his surveyors, to investigate such details as the buyer desires validated. This vessel or yacht is offered subject to prior sale, price change, or withdrawal without notice.

# PHOTOS













# CONTACTS

---

Andrey Shestakov, leading yacht broker of the sales department of Atlantic Yacht and Ship Inc. Atlantic Yacht and Ship Inc., the official representative of the Miami/Fort Lauderdale FL headquarters.

## Contact details

---

Email: [info@atlanticyachtandship.ru](mailto:info@atlanticyachtandship.ru)

Web: [www.atlanticyachtandship.ru/en/](http://www.atlanticyachtandship.ru/en/)

## Telephones

---

USA: +1 954 274-4435

RUS: +7 495 766-6268

## Office hours

---

Monday – Saturday: **9:00 - 21:00** EDT

Sunday: **closed**

## Address

---



Harbour Towne Marina, 850 NE 3rd St,  
STE 213, Dania, FL 33004