



## 78' PHINISI 2003 — CUSTOM



**Builder:** CUSTOM

**Year Built:** 2003

**Model:** Cruising Sailboat

**Price:** 470 000 € EUR Off the market

**LOA:** 78' 0" (23.77m)

**Beam:** 21' 0" (6.40m)

**Min Draft:** 7' 6" (2.29m)

**Cruise Speed:** 8 Kts. (9 MPH)

**Max Speed:** 12 Kts. (14 MPH)

Our experienced yacht broker, Andrey Shestakov, will help you choose and buy a yacht that best suits your needs 78' Phinisi 2003 — CUSTOM from our catalogue. Presently, at Atlantic Yacht and Ship Inc., we have a wide variety of yachts available on our sale's list. We also work in close contact with all the big yacht manufacturers from all over the world.

If you would like to buy a yacht 78' Phinisi 2003 — CUSTOM or would like help answering any questions concerning purchasing, selling or chartering a yacht, please call +1 954 274-4435

# TABLE OF CONTENTS

TABLE OF CONTENTS	2
SPECIFICATIONS	4
Basic Information	4
Dimensions	4
Speed, Capacities and Weight	4
Accommodations	4
Hull and Deck Information	4
Engine Information	4
DETAILED INFORMATION	6
Accommodations	6
Electronics and Navigational Equipment	6
Electrical System	6
Construction	6
Tenders	6
Features	7
Galley	7
Exclusions	7
Disclaimer	7
PHOTOS	8
Cabin	8
Deck	9
Deck	9
Deck	9
Front	9
Head	10
Buffet Table	10
Cruise Lunch	11

---

Cabin	11
Deck	11
Moana Platform	11
Saloon	12
CONTACTS	13
Contact details	13
Telephones	13
Office hours	13
Address	13

---

# SPECIFICATIONS

---

## Basic Information

---

**Category:** Cruising Sailboat

**Model Year:** 2003

**Year Built:** 2003

## Dimensions

---

**LOA:** 78' 0" (23.77m)

**Beam:** 21' 0" (6.40m)

**Min Draft:** 7' 6" (2.29m)

## Speed, Capacities and Weight

---

**Cruise Speed:** 8 Kts. (9 MPH)

**Max Speed:** 12 Kts. (14 MPH)

**Displacement:** 116000 Pounds

## Accommodations

---

**Total Cabins:** 6

## Hull and Deck Information

---

**Hull Material:** Wood

## Engine Information

---

**Engines:** 1

**Manufacturer:** MITSUBISHI

**Model:** 8 Cycle

**Engine Type:** Inboard

**Fuel Type:** Diesel

---

# DETAILED INFORMATION

---

---

## Accommodations

---

- 2 Double bed cabins
- 2 Three-bed cabins
- 1 Family cabin w/ double bed and 2 bunks.
- Salon
- Private head and A/C in each cabin
- Crew Quarters below

---

## Electronics and Navigational Equipment

---

- Garmin GPSmap 182
- Garmin 160 Blue fishfinder
- Icom HF marine transceiver IC-M600

---

## Electrical System

---

- Voltage: 220V/12V
- Gensets: 3 (27KV, 5KV, 3KV)

---

## Construction

---

- Hull: Ironwood
- Deck: Teak

---

## Tenders

---

- 15' Fiberglass dingy with 2 40 hp Yamaha outboard engines (1 spare)
- 2 x 15 person inflatable life rafts

---

## Features

---

This classic Phinisi Schooner was custom-built according to the time honored traditions of South Sulawesi boat-building, but with the needs of the modern charter operation in mind. Handcrafted teak and ironwood throughout make for a warm and inviting atmosphere. Price includes current profitable business with all current bookings, client contacts, and agent contacts.

---

## Galley

---

- 5 sq meters
- 2 burner stove
- Oven
- 3 Refrigerators
- 1 Freezer
- Double sink

---

## Exclusions

---

Owner's personal belongings. Owner's personal toys, including but not limited Jet-skis, Tenders, Sea Bobs, Fishing & Diving equipment.

---

## Disclaimer

---

The Company offers the details of this vessel or yacht in good faith but cannot guarantee or warrant the accuracy of this information nor warrant the condition of the vessel. A buyer should instruct his representatives, agents, or his surveyors, to investigate such details as the buyer desires validated. This vessel or yacht is offered subject to prior sale, price change, or withdrawal without notice.

# PHOTOS



Cabin

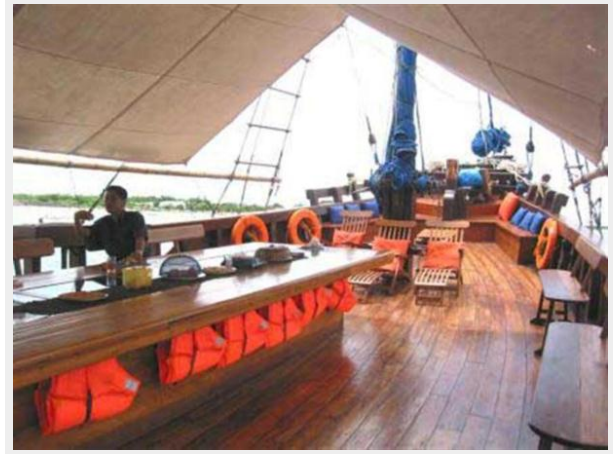




Deck



Deck



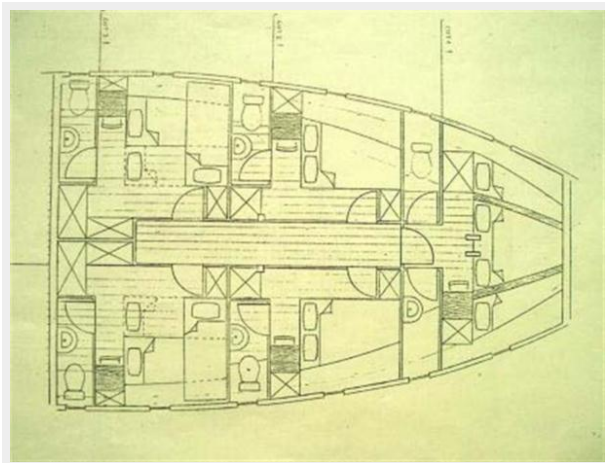
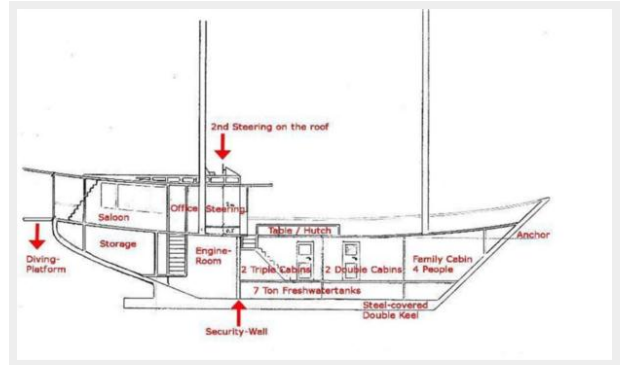
Deck



Front



## Head



## Buffet Table



**Cabin**



**Cruise Lunch**



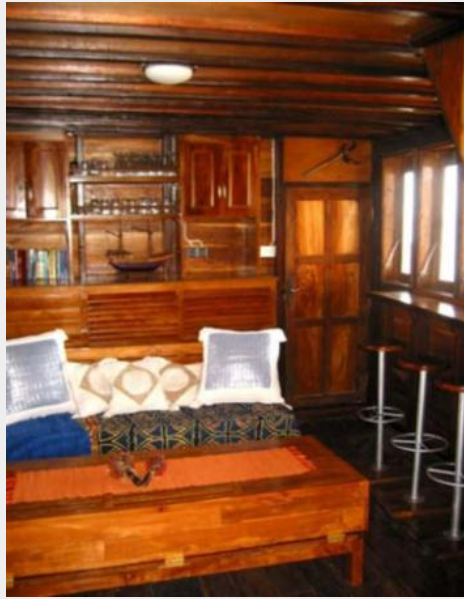
**Deck**



**Moana Platform**



## Saloon



# CONTACTS

---

Andrey Shestakov, leading yacht broker of the sales department of Atlantic Yacht and Ship Inc. Atlantic Yacht and Ship Inc., the official representative of the Miami/Fort Lauderdale FL headquarters.

## Contact details

---

Email: [info@atlanticyachtandship.ru](mailto:info@atlanticyachtandship.ru)

Web: [www.atlanticyachtandship.ru/en/](http://www.atlanticyachtandship.ru/en/)

## Telephones

---

USA: +1 954 274-4435

RUS: +7 495 766-6268

## Office hours

---

Monday – Saturday: **9:00 - 21:00** EDT

Sunday: **closed**

## Address

---



Harbour Towne Marina, 850 NE 3rd St,  
STE 213, Dania, FL 33004