



## PHOENIX — LEIGHT NOTIKA



**Builder:** LEIGHT NOTIKA

**Year Built:** 2003

**Model:** Motor Yacht

**Price:** PRICE ON APPLICATION

**Location:** Italy

**LOA:** 118' 0" (35.97m)

**Beam:** 26' 5" (8.03m)

**Min Draft:** 4' 2" (1.24m)

**Max Draft:** 20' 7" (6.25m)

**Cruise Speed:** 20 Kts. (23 MPH)

**Max Speed:** 23 Kts. (26 MPH)

Our experienced yacht broker, Andrey Shestakov, will help you choose and buy a yacht that best suits your needs **PHOENIX — LEIGHT NOTIKA** from our catalogue. Presently, at Atlantic Yacht and Ship Inc., we have a wide variety of yachts available on our sale's list. We also work in close contact with all the big yacht manufacturers from all over the world.

If you would like to buy a yacht **PHOENIX — LEIGHT NOTIKA** or would like help answering any questions concerning purchasing, selling or chartering a yacht, please call +1 954 274-4435

---

# TABLE OF CONTENTS

---

|                              |   |
|------------------------------|---|
| TABLE OF CONTENTS            | 2 |
| SPECIFICATIONS               | 3 |
| Overview                     | 3 |
| Basic Information            | 3 |
| Dimensions                   | 3 |
| Speed, Capacities and Weight | 3 |
| Accommodations               | 4 |
| Hull and Deck Information    | 4 |
| Engine Information           | 4 |
| DETAILED INFORMATION         | 5 |
| Accommodations               | 5 |
| Safety & Fire Protection     | 5 |
| Communication & Navigation   | 5 |
| Mechanical                   | 6 |
| Galley                       | 6 |
| Entertainment                | 6 |
| Tenders & Toys               | 6 |
| Exclusions                   | 6 |
| Disclaimer                   | 6 |
| PHOTOS                       | 7 |
| CONTACTS                     | 9 |
| Contact details              | 9 |
| Telephones                   | 9 |
| Office hours                 | 9 |
| Address                      | 9 |

---

# SPECIFICATIONS

---

## Overview

---

'Phoenix' is in a class of her own. A sophisticated lighting system controls the ambience for her 8/9 guests, who are accommodated in two double and two twin cabins, all ensuite. The full width master cabin is situated on the main deck. The full width VIP cabin and the two twin cabins are on the lower deck. The yacht can accommodate a 9th guest in an additional pullman bed in one of the twin cabins. Onboard entertainment includes flat screen TV, video, CD player, music hi-fi system with CD, DVD and MD. 'Phoenix' is well equipped with water toys including water skis, a two-seater 95hp Yamaha Jetski, windsurfer, wakeboard and diving equipment.

## Basic Information

---

**Category:** Motor Yacht

**Model Year:** 2003

**Year Built:** 2003

**Refit Year:** 2013

**Country:** Italy

**Fly Bridge:** Yes

## Dimensions

---

**LOA:** 118' 0" (35.97m)

**LWL:** 99' 2" (30.20m)

**Beam:** 26' 5" (8.03m)

**Min Draft:** 4' 2" (1.24m)

**Max Draft:** 20' 7" (6.25m)

## Speed, Capacities and Weight

---

**Cruise Speed:** 20 Kts. (23 MPH)

**Cruise Speed Range:** 2200

**Max Speed:** 23 Kts. (26 MPH)

**Gross Tonnage:** 244 Pounds

**Water Capacity:** 528.344104 Gallons

**Fuel Capacity:** 11623.570288 Gallons

---

## Accommodations

---

**Total Cabins:** 4

**Total Berths:** 7

**Sleeps:** 9

---

## Hull and Deck Information

---

**Hull Material:** Epoxy Composite

**Exterior Designer:** Bill Dixon

**Interior Designer:** Birgit Schnaase

---

## Engine Information

---

**Engines:** 2

**Manufacturer:** MTU

**Model:** 16V 2000

**Fuel Type:** Diesel

# DETAILED INFORMATION

## Accommodations

Main deck: Large owner's cabin with double bed (queen-size: 1.80m x 2.00m), study area, walk in wardrobe, bathroom with shower and separate head. (height in master cabin varies from 1.80 to 1.90 m, the door is 1.88 m) Lower deck: VIP cabin with double bed (1.60m x 2.00m), bathroom with shower, twin bed guest cabin with shower ensuite, twin bed guest cabin with additional Pullman bed (90 x 190 cm), shower ensuite.

## Safety & Fire Protection

Life rafts: Viking 12DK, Solas-A 2 x 12 man Autoflug 2 x 6 man Life jackets: Solas certified and sufficient for all guests, crew and children Fire-fighting equipment: Engine room fire system Sea Fire; Manual System FM 200 Ship alarms: Fire alarm: Reya Marinelec Solas approved Intruder alarms: For gangway only Bilge & fire pumps: G & R ACM 401 BT; 2 units 24V / 380V Searchlight: ITT 146 SL RC; 2 units Security cameras: 2 x in engine room only Misc. safety equipment: Plastimo

## Communication & Navigation

All equipment is GMDSS compliant Inmarsat C: Furuno Felcom 19 SSAS (new 2013) Sat tel. & data - Vsat: KVH Tracphone V3ip data and voice (new 2014) With 1 telephone line Global Satellite telephone: Iridium (new 2013) GSM telephone: 2 lines - Nokia; Premicell Sat TV: Intellian i9W system (new 2013) SSB radio: Sailor; HC 4500 VHF DSC: 2 x Simrad; RS 87 VHF hand held radio: 3 units Telephone exchange: Panasonic; KX-TD816 G-E Telephone exchange: Panasonic; KX-TD816 G-E Epirb: 2 x MK4 9 GHz radar transponder: Tron; SART ARSAT/COSPAS EPIRB: Tron; 30S MK II Printer / fax: Hewlett Packard; G95 Office jet NAVIGATION EQUIPMENT Bridge Line pilothouse operator panel: KMSS Bridge Line flybridge operator panel: KMSS 19" TFT Bright Monitors: 18" TFT Bright Monitors 4 x Furuno MU-190 HD (all new 2013) 1 x Bootronik M18 15" TFT Bright Monitor: 1 x Furuno MU-150 HD on flybridge (new 2013) 25 kW X band ARPA Radar: 2 x Kongsberg Norcontrol; MK4 NMEA distribution: Simrad Ethernet distribution: Bootronik Depth sounder: Robertson; EQ 52 Autopilot: 2 x Robertson; AP2000 GPS: 2 x Shipmate; HS 50 GPS compass: Furuno SC 50 (new 2014) Gyro compass: Robertson; RGC12 Analog gyro repeater: Robertson; AR 77 Instrument wind: Furuno FI-501 (new 2013) Instrument speed/depth: Furuno FI-503 (new 2013) Instrument multi view: Furuno FI-504 (new 2013) Instrument compass: Simrad IS15 compass (new 2013) Navtex: Sailor; NX 300 Weather recorder: Fastnet; FMD 55 Weather station: Airmar PB200; (new 2013) Rudder indicator: Robertson; RI 9 Alarm and monitoring system: MTU; MCS – Type 2 for engines Alarm & monitoring system: ECR; Custom design for systems (new 2013) Navigation lights: Aqua Signal; Type 55 Horn: Kahlenberg; 1 x Super Two Windscreen wipers: Exalto 250BS; 3 units

---

## Mechanical

---

2 x 75 kw generators John Deere Bowthruster 80 hp Propulsion: CJR 5 blade, AB2, 1100 x 1200

---

## Galley

---

Combi-steamer: Houno; CMC 1.06 Refrigerated undercounter cabinet: Imperial Range combination induction: MKN; Countermeister 700 Baking oven: MKN; 1 1/2 Salamander: MKN; 1/1 S/S washing table: MCE Pre-rinse shower: MCE Dishwasher: Hobart; FX-40 (new 2014) Food Robot: Kenwood; KM 800 Food mixer: Kenwood; PM900 Micro wave oven: Sanyo; EM-C 1800M Espresso machine: CMA Argenta; AEAP/1 Vacuum packer: Vacuum Technic; Vacomat 120N Combi cutter: Halde ; CC-34 Thermo-mix Hot- whip: Yes Ice-cube machine: Scotsman; ACM-45 Exhaust hood /filter / 2 fans: MCE Electric grill for flybridge/double: custom made Clothes washer extractor: 2 Miele Marine; W355H Clothes tumble dryer: 2 Miele Marine; T2130

---

## Entertainment

---

Salon/dining room : Sony LCD TV (satellite), DVD player, Nad Video CD player, aux for Ipod, Karaoke, PS2 Master cabin: Sharp TV, DVD player, Teac Hifi, CD/DVD, MD, aux for Ipod guest cabins: Sharp TV, Teac Hifi Portatif DVDs Teac Hifi also in galley, flybridge, pilot house, lots of speakers Crew Mess and Captain's cabin: Sharp TV and Teac Hifi

---

## Tenders & Toys

---

Special craft 5.50 m with 120 hp Zodiac with 5 hp Yamaha VX1800 Waverunner 2 x sea bobs F7 2 x pair of water skis 1 pair of waterskies for children wake board / knee board / doughnut / banana

---

## Exclusions

---

Owner's personal belongings. Owner's personal toys, including but not limited Jet-skis, Tenders, Sea Bobs, Fishing & Diving equipment.

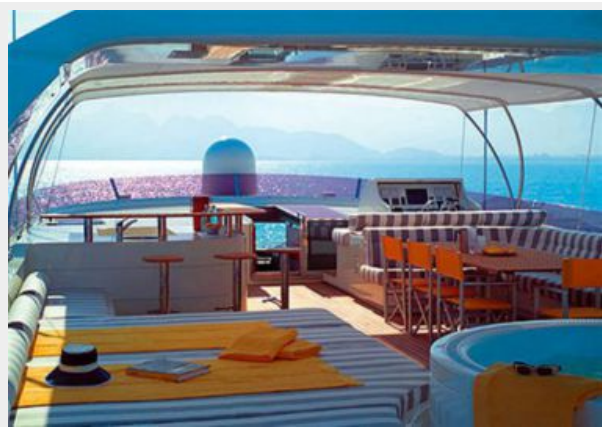
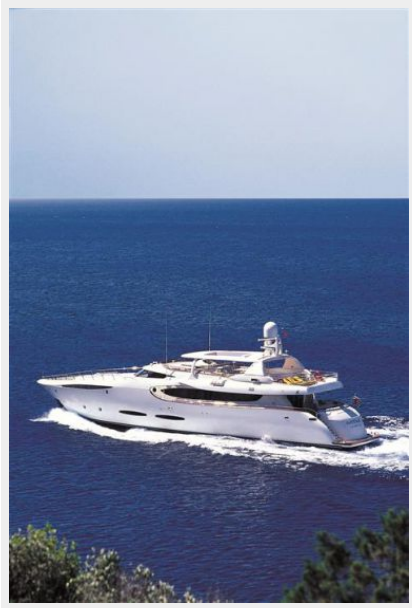
---

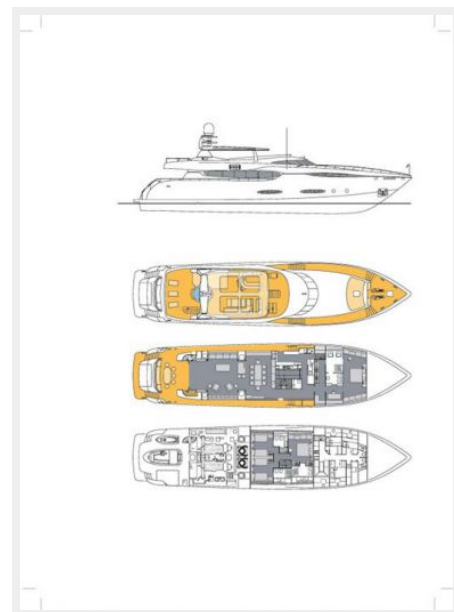
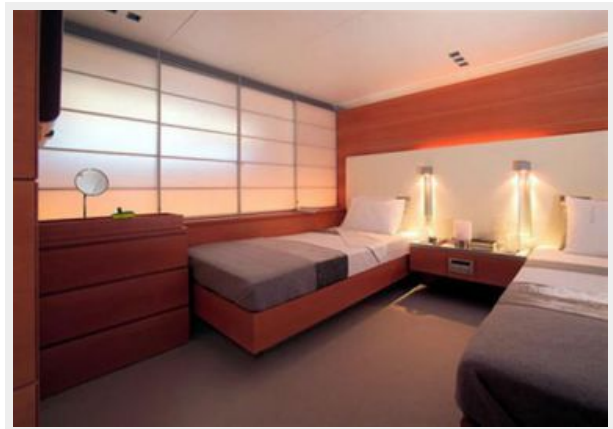
## Disclaimer

---

The Company offers the details of this vessel or yacht in good faith but cannot guarantee or warrant the accuracy of this information nor warrant the condition of the vessel. A buyer should instruct his representatives, agents, or his surveyors, to investigate such details as the buyer desires validated. This vessel or yacht is offered subject to prior sale, price change, or withdrawal without notice.

# PHOTOS







# CONTACTS

---

Andrey Shestakov, leading yacht broker of the sales department of Atlantic Yacht and Ship Inc. Atlantic Yacht and Ship Inc., the official representative of the Miami/Fort Lauderdale FL headquarters.

## Contact details

---

Email: [info@atlanticyachtandship.ru](mailto:info@atlanticyachtandship.ru)

Web: [www.atlanticyachtandship.ru/en/](http://www.atlanticyachtandship.ru/en/)

## Telephones

---

USA: +1 954 274-4435

RUS: +7 495 766-6268

## Office hours

---

Monday – Saturday: **9:00 - 21:00** EDT

Sunday: **closed**

## Address

---



Harbour Towne Marina, 850 NE 3rd St,  
STE 213, Dania, FL 33004