



## ONE MORE TOY — CHRISTENSEN



**Builder:** CHRISTENSEN

**Year Built:** 2001

**Model:** Motor Yacht

**Price:** ~~\$16,900,000 USD~~ Off the market

**Location:** United States

**LOA:** 155' 0" (47.24m)

**Beam:** 28' 0" (8.53m)

**Max Draft:** 7' 0" (2.13m)

**Cruise Speed:** 14 Kts. (16 MPH)

**Max Speed:** 20 Kts. (23 MPH)

Our experienced yacht broker, Andrey Shestakov, will help you choose and buy a yacht that best suits your needs **ONE MORE TOY — CHRISTENSEN** from our catalogue. Presently, at Atlantic Yacht and Ship Inc., we have a wide variety of yachts available on our sale's list. We also work in close contact with all the big yacht manufacturers from all over the world.

If you would like to buy a yacht **ONE MORE TOY — CHRISTENSEN** or would like help answering any questions concerning purchasing, selling or chartering a yacht, please call **+1 954 274-4435**

# TABLE OF CONTENTS

TABLE OF CONTENTS	2
SPECIFICATIONS	4
Basic Information	4
Dimensions	4
Speed, Capacities and Weight	4
Accommodations	4
Hull and Deck Information	5
Engine Information	5
DETAILED INFORMATION	6
Accommodations	6
Galley and Laundry Equipment	8
Deck Equipment	9
Pilothouse	10
Entertainment Systems	10
Communications and Navigation Systems	10
Machinery	12
Security, Fire Fighting & Safety Equipment	14
Tenders & Toys	15
Exclusions	15
UPGRADES	15
Exclusions	15
Disclaimer	16
PHOTOS	17
Main Salon	17
Foyer/Hall	17
Dining	17
Upper Lounge	17
Main Aft Deck Dining	17

Upper Aft Deck Dining	18
Upper Lounge	18
Master Office	18
Master Stateroom	18
Master Bath	18
Guest VIP Stateroom	18
Guest Queen Stateroom	19
Guest Queen Stateroom	19
Guest Twin Stateroom	19
Guest Twin Stateroom	19
Sundeck	19
Bridge	19
Tenders and Toys	20
Sundeck	20
Tenders and Toys	20
Aerial	20
Layout	21
<b>CONTACTS</b>	<b>22</b>
Contact details	22
Telephones	22
Office hours	22
Address	22

---

# SPECIFICATIONS

---

## Basic Information

---

**Category:** Motor Yacht

**Model Year:** 2001

**Year Built:** 2001

**Country:** United States

## Dimensions

---

**LOA:** 155' 0" (47.24m)

**Beam:** 28' 0" (8.53m)

**Max Draft:** 7' 0" (2.13m)

## Speed, Capacities and Weight

---

**Cruise Speed:** 14 Kts. (16 MPH)

**Cruise Speed Range:** 3500

**Max Speed:** 20 Kts. (23 MPH)

**Displacement:** 490000 Pounds

**Gross Tonnage:** 462 Pounds

**Water Capacity:** 1900 Gallons

**Fuel Capacity:** 12090 Gallons

## Accommodations

---

**Total Cabins:** 6

**Sleeps:** 12

**Captain Cabin:** True

**Crew Cabin:** 5

**Crew Sleeps:** 10

---

## Hull and Deck Information

---

**Hull Material:** Fiberglass

**Deck Material:** Teak

**Hull Configuration:** Semi-Displacement

**Exterior Designer:** Christensen Shipyard

**Interior Designer:** Christensen Shipyard

---

## Engine Information

---

**Engines:** 2

**Manufacturer:** MTU

**Model:** DDC 16 V2000

**Engine Type:** Inboard

**Fuel Type:** Diesel

---

# DETAILED INFORMATION

---

## Accommodations

---

### Salon

- Raised Panel High Gloss Black Walnut
- Satin Cherry Tables with Leather and Marble Inlay
- Chairs and Sofa by Rainbow Furniture (Salem, OR)
- Leather Overheads Spinneybeck (Custom Dye)

### Dining

- Table- Black Walnut and Cherry with Inlay of Verede Giada Marble
- Raised Panel High Gloss Black Walnut
- Stained Glass in cabinets by Chuck Franklin Stained Glass Co.
- Fiber Optic Lighting
- Faux Painted Recessed Ceiling Dome Leather Overheads Spinneybeck

### Galley

- Counter Tops and Walls (Colonial Dream Granite)
- Floor (Travertine Marble)
- Leather Overheads Spinneybeck (Custom Dye)

### OWNER

#### Master Stateroom

- Raised Panel High Gloss Black Walnut
- King Poster Bed: High Gloss Black Walnut with Verde Giada Marble
- Leaded Glass in Cabinets by Chuck Franklin Stained Glass Co
- Leather Overheads Spinneybeck (Custom Dye)
- Fiber Optic Lighting

#### Master Bath

- Raised Panel High Gloss Black Walnut (his side)
- Raised Panel Painted (her side)
- Jacuzzi Tub
- Bath Fixtures by Serdaneli
- ACQUA Leather Overheads Spinneybeck (Custom Dye)
- Verde Giada Marble (his side)
- Blue Lapis Marble (her side)
- Flooring: Verde Giada, Blue Lapis, Crema Marfil, with polished stainless steel inlay
- Shower: Blue lapis, Crema Marfil, with polished stainless steel inlay

#### Office/Study

- Raised Panel High Gloss Black Walnut
- Coffered Ceiling High Gloss Black Walnut
- Leather Overheads Spinneybeck (Custom Dye)
- Leaded Glass in Cabinets by Chuck Franklin Stained Glass Co.
- High Gloss Black Walnut Desk with Leather and Marble (Verde Giada) inlay

#### GUESTS

#### VIP

- Raised Panel High Gloss Black Walnut
- Leather Overheads Spinneybeck (Custom Dye)
- Queen Bed, High Gloss Black Walnut
- Nightstand, High Gloss Black Walnut with Verde Giada Marble Inlay
- Bath Counters and Walls - Verde Giada Marble
- Bath Flooring – Verde Onyx, White Thassos and Giallo Real Marble
- Bath Fixtures by Jado

#### Stateroom 3: Queen bed

#### Stateroom 4: Queen bed

Stateroom 5: 1 double bed and 2 single beds

Stateroom 6: 1 double bed and 2 single beds

## CREW

### Captain's Stateroom

- Raised Panel High Gloss Black Walnut
- Queen bed, High Gloss Black Walnut
- Nightstand – Satin Cherry with Leather Inlay
- Leather Overheads Spinneybeck (Custom Dye)
- Bath Counter/Flooring – Crema Marfil Marble
- Bath Fixtures by Jado

### Crew Quarters

- Accommodations for 8 crew
- Ash Cabinets
- Majilite Finesse (Baby Ostrich) Wall and Ceiling Covering
- (2) large dining tables w/ leather bench seating
- Sink fixtures by Kohler

---

## Galley and Laundry Equipment

---

### Main Galley Equipment

Freshly Painted May 2015

Ovens: (2)Gaggenau

Refrigeration/Freezer: Traulsen (Under-Countertop), Sub Zero (Up-Right)

Dishwasher: (1)Gaggenau (1)Electrolux Commercial Hi-Speed, Sanitizing LS6AH,  
New 11/2005



Cook Top: Thermador

Microwave: Frigidaire

Trash Compactor: Frigidaire

Ice Maker: Hoshizaki, New 3/2005

### Crew Galley/Mess Equipment

Cooking Equipment: Microwave (GE)

Refrigeration/Freezer: Walk in Cooler(KYSOR/KALT) Refrigerator (GE)  
(4) Amana Freezers

Dishwasher: Gaggenau

### Laundry Equipment:

(2) Commercial Washers (Speed Queen)

Main Laundry Equipment (2) commercial Dryers (Speed Queen), New 11/2005

Roll Iron (Miele)

Lower Vestibule: Stackable Washer/Dryer (Miele)

---

## Deck Equipment

---

Anchor Windlass: (2) Maxwell VWC 8000 Deck Windlass

Aft Warping Capstans: (2) Maxwell Model #3500

Anchors: (2) Navy Stockless 775lbs

Anchor Chain: (2) 350' gal-steel stud

Boat Crane and Davits: (2) Marquipt Bow Davit Port and Starboard  
(1) Christensen Crane

---

## Pilothouse

---

Brand New Atlas System

---

## Entertainment Systems

---

### Entertainment System:

Video Equipment

Sat TV Sea Tel, 24" & 48" Dishes

Master Stateroom 42" Plasma TV, DVD/CD, VCR, Tuner

Office: Computer with Flat Screen Monitor for Internet Access

VIP: 42" Plasma TV, DVD/CD, VCR, Tuner

Guest Staterooms: 20" TV, DVD /CD, Tuner

Main Salon: 42" Plasma TV, DVD/CD, VCR, Tuner

Captain's Stateroom: 20" TV, DVD/CD, Tuner

Crew Quarters: CD, Tuner

---

## Communications and Navigation Systems

---

---

## Communication Systems

SATcom: Furuno Felcom 12/2 Standard C Satcom System  
Nera Fleet 33 Satellite Communications, New 2005

Telephone System: Panasonic

SSB: Furuno 1562-15

VHF: (2) Furuno 8500

Intercom: Panasonic

Internet: V-sat Hi-Speed Internet Satellite Connection with WiFi Access in all cabins, lounges and decks, New 5/2005

## Navigation Systems

Radar: (1)Furuno FR 2115 BB X Band Radar  
(1)Furuno FR 2135 BB S Band Radar

Gyrocompass: Anschutz

Magnetic Compass: C. Plath

Auto Pilot: Anschutz Pilotstar D Autopilot

Depth Sounder: B&G 215-HL-016

GPS: Northstar 941X

Ships Computer: Radio Desk Office Computer w/HP Multifunction Printer/Scanner/Fax

Wind/Speed Log: B&G

Navtex: Furuno FX-500

AIS: Furuno FA – 100 , New 5/2005

## Machinery

---

### Main Engines

Engine Type: (2) MTU DDC 16 V2000

Engine Hours: Port 14,534 Starboard 13,383 (as of 11/4/15)

Gearboxes for Main Engines: Detroit Diesel reversing gears

Drive: shaft

### Speed Consumption per hoursRangeRPM

Speed(KTS) Consump/hr Range(NM) RPM

17 201 1022 2300

16 126 1535 2100

15 110 1648 2000

12 74 1961 1700

10 36 3358 1350

### Generators & Electricity

---

3 Brand New Northern Lights Generators- May 2015 Port: 985 Starboard: 855 Night: 241 (as of 11/4/15)

## Batteries

Main Engine Starting: (2) 24v bank 8d sealed lead acid

Generator Starting: (2) 24v bank 8d sealed lead acid

Emergency: (2) 27 series 24v

## Air Conditioning:

Type: Aqua Air 30 ton new Nov. 2009

## Other Machinery

New Power Panel New Exhaust Covers

Watermakers: (2) FCI 1800gpd new Nov 2009

Trim Tabs/Stabilizers: Brand New Zero Speed Stabilizers- May 2015

Bow Thruster: 24"/100hp American Bow Thruster

Steering System: Jastrom

Fuel Separator & Filtration: Alfa Laval

Sewage System: Envirovac, Oraca TTreatment

Fresh Water System: Burkes

Bilge Water Filtration: Nelson

---

Lube Oil Capacity	120g	
Waste Oil Capacity	800g	Gasoline 200g

Elevator: All decks, Including Fly Bridge (Christensen Shipyards)

## Security, Fire Fighting & Safety Equipment

---

Security Equipment:

CCTV System: Elbex

Cameras: 5 camera

Monitors: 2

Fire Fighting Equipment:

Fire Control System: (72) Water sprinkler's, Foam galley, FM200 engine room

Fire Extinguishers: 33

Alarms: Monitoring system

Safety Equipment

Life Rafts: (3) 15 man SWITLIK

Life Rings: 4

EPIRBS: 2

Flares: Per SOLAS requirements

Medical Equipment: YES

---

## Tenders & Toys

---

### TENDERS & TOYS

Tenders: (1)21'Novurania 660 DL w/ 2 Yamaha 135hp 4-stroke outboards, VHF, GPS, Depth Finder

Dive Gear: Baurer M-E3 dive compressor

Toys: (4)Yamaha Wave Runner VX1100 DeLuxe

Exercise: Schwinn "Spinning" Exercise Bike

---

## Exclusions

---

Owner's personal effects and art work. A full inventory of exclusions to be provided at time of fully executed Purchase Agreement.

---

## UPGRADES

---

**May 2015 Upgrades: New Top to Bottom Paint Job** New Atlas System 3 New Northern Lights Generators New Zero Speed Stabilizers New Power Panel New Exhaust Covers New Carpet Throughout Boat New Soft Goods New Leather Coverings on Pilot Chairs New Wallpaper in Crew Area New Crew Cushions

---

## Exclusions

---

Owner's personal belongings. Owner's personal toys, including but not limited Jet-skis, Tenders, Sea Bobs, Fishing & Diving equipment.

---

## Disclaimer

---

The Company offers the details of this vessel or yacht in good faith but cannot guarantee or warrant the accuracy of this information nor warrant the condition of the vessel. A buyer should instruct his representatives, agents, or his surveyors, to investigate such details as the buyer desires validated. This vessel or yacht is offered subject to prior sale, price change, or withdrawal without notice.



# PHOTOS



**Main Salon**



**Foyer/Hall**



**Dining**



**Main Aft Deck Dining**



**Upper Lounge**



**Upper Lounge**



**Upper Aft Deck Dining**



**Master Stateroom**



**Master Office**



**Master Bath**



**Guest VIP Stateroom**



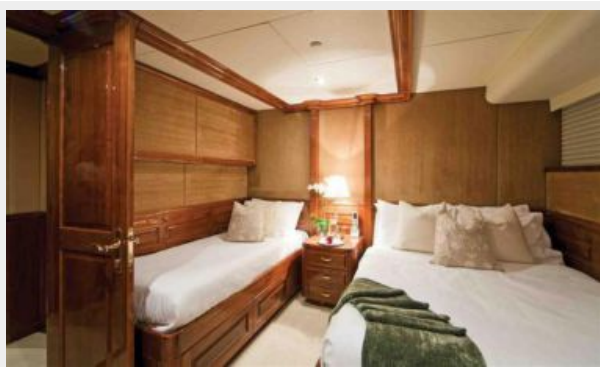
**Guest Queen Stateroom**



**Guest Queen Stateroom**



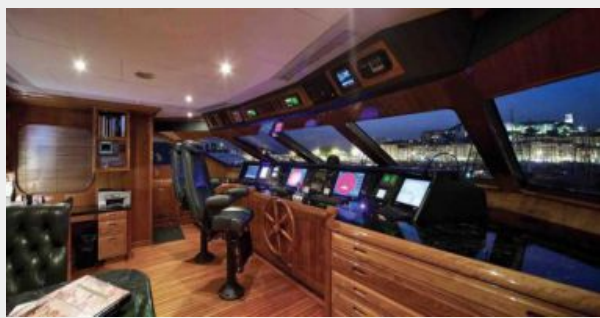
**Guest Twin Stateroom**



**Guest Twin Stateroom**



**Bridge**



**Sundeck**



### Sundeck



### Tenders and Toys



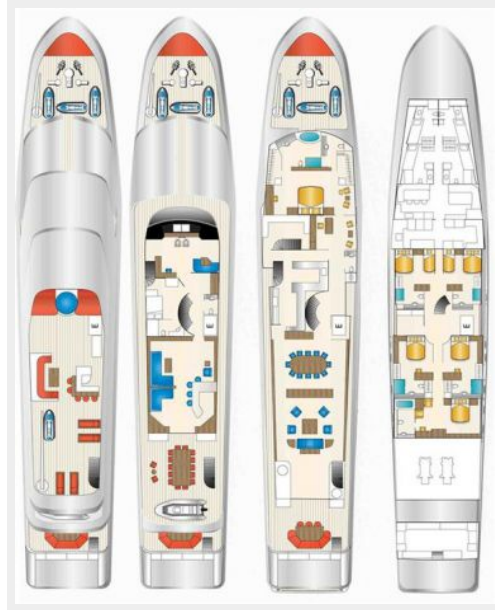
### Tenders and Toys



### Aerial



## Layout



# CONTACTS

---

Andrey Shestakov, leading yacht broker of the sales department of Atlantic Yacht and Ship Inc. Atlantic Yacht and Ship Inc., the official representative of the Miami/Fort Lauderdale FL headquarters.

## Contact details

---

Email: [info@atlanticyachtandship.ru](mailto:info@atlanticyachtandship.ru)

Web: [www.atlanticyachtandship.ru/en/](http://www.atlanticyachtandship.ru/en/)

## Telephones

---

USA: +1 954 274-4435

RUS: +7 495 766-6268

## Office hours

---

Monday – Saturday: **9:00 - 21:00** EDT

Sunday: **closed**

## Address

---



Harbour Towne Marina, 850 NE 3rd St,  
STE 213, Dania, FL 33004