



DAYTRIPPER 40 — DERELI



Builder: [DERELI](#)

Year Built: 2006

Model: Cruiser

Price: ~~\$420,000 USD~~ Off the market

Location: United States

LOA: 40' 0" (12.19m)

Beam: 12' 7" (3.81m)

Min Draft: 2' 0" (0.61m)

Cruise Speed: 28 Kts. (32 MPH)

Max Speed: 33 Kts. (38 MPH)

Our experienced yacht broker, Andrey Shestakov, will help you choose and buy a yacht that best suits your needs **DAYTRIPPER 40 — DERELI** from our catalogue. Presently, at Atlantic Yacht and Ship Inc., we have a wide variety of yachts available on our sale's list. We also work in close contact with all the big yacht manufacturers from all over the world.

If you would like to buy a yacht **DAYTRIPPER 40 — DERELI** or would like help answering any questions concerning purchasing, selling or chartering a yacht, please call **+1 954 274-4435**

TABLE OF CONTENTS

TABLE OF CONTENTS	2
SPECIFICATIONS	4
Basic Information	4
Dimensions	4
Speed, Capacities and Weight	4
Accommodations	4
Hull and Deck Information	4
Engine Information	5
DETAILED INFORMATION	6
Accommodations	6
Master Stateroom	6
Dinette/Salon	6
Head	6
Galley	6
Pilothouse	7
Electronics	7
Electrical System	7
Deck/Hull	7
Mechanical Equipment	7
Remarks	8
Disclaimer	8
Exclusions	8
Disclaimer	8
PHOTOS	10
Running shot	10
Lower	11
CONTACTS	12

Contact details	12
Telephones	12
Office hours	12
Address	12

SPECIFICATIONS

Basic Information

Category: Cruiser

Sub Category: Express

Model Year: 2006

Year Built: 2006

Country: United States

Dimensions

LOA: 40' 0" (12.19m)

Beam: 12' 7" (3.81m)

Min Draft: 2' 0" (0.61m)

Speed, Capacities and Weight

Cruise Speed: 28 Kts. (32 MPH)

Max Speed: 33 Kts. (38 MPH)

Displacement: 17500 Pounds

Water Capacity: 60 Gallons

Fuel Capacity: 320 Gallons

Accommodations

Total Cabins: 1

Sleeps: 2

Total Heads: 1

Hull and Deck Information

Hull Material: Composite

Deck Material: Composite

Hull Configuration: Modified Deep Vee

Hull Designer: Ed Fry (FRYCO)

Engine Information

Engines: 2

Manufacturer: Yanmar

Engine Type: Inboard

Fuel Type: Diesel

DETAILED INFORMATION

Accommodations

The DayTripper 40 Jet Series features state-of-the-art fiberglass composite construction coupled with true old world craftsmanship. Produced in a joint venture with well-known European super yacht builder R.B. Dereli and designed by American naval architect Ed Fry of Fryco, her structural design is by the highly respected New Zealand firm High Modulus, leaders in composite technology, and employs epoxy resins, E-Glass, carbon fiber divynycell and Kevlar hybrid cloth. She is oven-cured once when the hull and deck are laid up and then baked again after her hull and deck have been fiberglassed together -- unlike most of our competitors who use adhesives and bolts. She features a surprisingly spacious layout that sleeps six (stateroom; dinette and pilothouse) and is perfect for a weekend or weeklong cruise. She's quiet, smooth and fast with a top speed of 32 knots.

Master Stateroom

The master cabin and saloon have an 8000 BTU air handler for heating and cooling. V-berth with insert covered with Ralph Lauren fabric. Cedar lined hanging lockers. The teak & holly sole is standard.

Dinette/Salon

Dinette seats four people comfortably and folds down to sleep two with standard filler cushion. Cushions covered in Ralph Lauren fabric. The teak & holly sole is standard.

Head

Head features Raritan Atlantes household-size, megayacht-style toilet, sink with granite counter and shower stand. Towel racks, vanity mirror and even the bowl brush and stand are standard.

Galley

Galley features U-line refrigerator, 2-burner stove, GE microwave, storage and granite counters. She also features cedar lined lockers, cabinets and drawers.

Pilothouse

The Pilothouse features an Italian leather OpacMar helm seat, L-shaped settee with teak hi-lo table, and storage areas. Pilothouse air conditioner with 16,000 BTU air handler is standard. Cushions are covered in Sunbrella fabric and includes a settee filler cushion. Sony AM/FM stereo with CD-player and four speakers is standard.

Electronics

Furuno 1833 NavNet-System with color plotter and 36mi color radar offering split screen or overlay; Furuno GPS Navigator DGPS-36; Simrad IS 15 Combi system speed, depth and trip log; Simrad AP 22 autopilot; ACR spotlight; Ritchie SS2000 compass; Simrad RS8300 VHF.

Electrical System

- Cruisair 24000 BTU air conditioning
- 220V/110V/50 Amp AC electrical system
- 12V DC electrical system
- Master Volt Battery Charger
- One 220V/50 Amp Shore power cord
- Custom electrical panel
- Batteries - Four 8D Gel Cell

Deck/Hull

The use of epoxy resin with a tensile strength ten times higher than polyester allows the elimination of the "fat" of non-structural chopped-strand mat commonly used in polyester production boats. With this construction method, every unidirectional fiber in DayTripper yacht epoxy contributes to the strength of the hull. DayTripper's composite laminate is engineered by High Modulus (Leaders in Composite Technology), with a foam core that delivers superior shear strength, impact resistance, stiffness, and thermal and sound insulation qualities. All of which means that DayTripper yachts' oven-baked epoxy, Kevlar, Carbon Fiber construction is the strongest, stiffest, and most durable you can buy. Because epoxy's "post-cure" shrinkage is nearly zero, DayTripper's epoxy hulls will always maintain their fair, smooth, brilliant finish. Windlass; anchor chain (120') and rode (200' of 5/8") and 35lb. plow anchor; dock lines and fenders; sunpads and cushions for pilothouse in Sunbrella fabric.

Mechanical Equipment

- Twin Yanmar 370 HP diesel engines
- Underwater exhaust
- Hamilton 274 water jets
- Algae-X fuel decontamination system
- Northern Lights 5 kw generator with sound shield
- Racor fuel filters
- Vetus Bow thruster
- Morris controls
- One manual bilge pump
- Mathers engine synchronizer
- Battery charger
- Three automatic bilge pumps
- Bennett Trim tabs
- 24000 BTU Cruisair compressor

Remarks

This fully loaded DayTripper 40 powered by twin Yanmar 370 HP diesels is delivered with Hamilton Jets, bow thruster (or conventional propellers), mahogany or cherry interior with Ralph Lauren fabrics and complete electronics including radar, plotter, autopilot, GPS and much more! The fiberglass epoxy, Kevlar, Carbon Divinylcell, oven-baked hull and deck was structurally designed by High Modulus. The hull and deck and overheads are fibreglassed together with three layers of E-glass on the inside and three layers on the outside -- unlike most of our competitors who use adhesives and bolts. Even the flag staff and country flag of choice are included. So complete there are no options!

Disclaimer

The Company offers the details of this vessel in good faith but cannot guarantee or warrant the accuracy of this information nor warrant the condition of the vessel. A buyer should instruct his agents, or his surveyors, to investigate such details as the buyer desires validated. This vessel is offered subject to prior sale, price change, or withdrawal without notice.

Exclusions

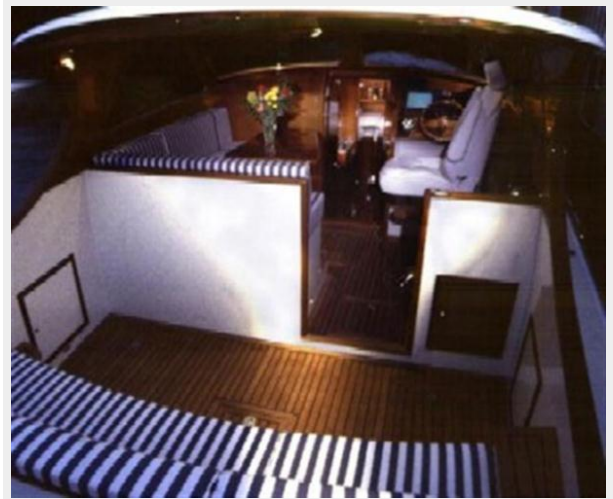
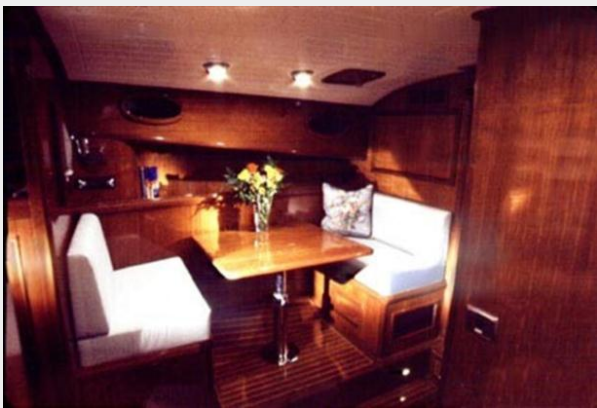
Owner's personal belongings. Owner's personal toys, including but not limited Jet-skis, Tenders, Sea Bobs, Fishing & Diving equipment.

Disclaimer

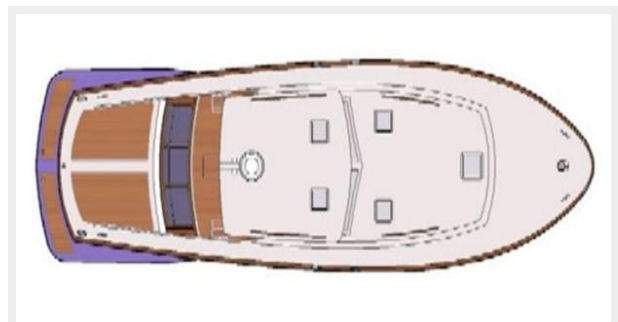
The Company offers the details of this vessel or yacht in good faith but cannot guarantee or warrant the accuracy of this information nor warrant the condition of the vessel. A buyer should instruct his representatives, agents, or his surveyors, to investigate such details as the buyer desires validated. This vessel or yacht is offered subject to prior sale, price change, or withdrawal

without notice.

PHOTOS



Running shot



Lower



CONTACTS

Andrey Shestakov, leading yacht broker of the sales department of Atlantic Yacht and Ship Inc. Atlantic Yacht and Ship Inc., the official representative of the Miami/Fort Lauderdale FL headquarters.

Contact details

Email: info@atlanticyachtandship.ru

Web: www.atlanticyachtandship.ru/en/

Telephones

USA: +1 954 274-4435

RUS: +7 495 766-6268

Office hours

Monday – Saturday: **9:00 - 21:00** EDT

Sunday: **closed**

Address



Harbour Towne Marina, 850 NE 3rd St,
STE 213, Dania, FL 33004