



## PIER PRESSURE — VIKING



**Builder:** [VIKING](#)

**Year Built:** 2000

**Model:** Sport Fisherman

**Price:** ~~\$585,000 USD~~ Off the market

**Location:** United States

**LOA:** 50' 0" (15.24m)

**Beam:** 16' 4" (4.98m)

**Cruise Speed:** 33 Kts. (38 MPH)

**Max Speed:** 37 Kts. (43 MPH)

Our experienced yacht broker, Andrey Shestakov, will help you choose and buy a yacht that best suits your needs **PIER PRESSURE — VIKING** from our catalogue. Presently, at Atlantic Yacht and Ship Inc., we have a wide variety of yachts available on our sale's list. We also work in close contact with all the big yacht manufacturers from all over the world.

If you would like to buy a yacht **PIER PRESSURE — VIKING** or would like help answering any questions concerning purchasing, selling or chartering a yacht, please call +1 954 274-4435

# TABLE OF CONTENTS

TABLE OF CONTENTS	2
SPECIFICATIONS	4
Overview	4
Basic Information	4
Dimensions	4
Speed, Capacities and Weight	4
Accommodations	5
Hull and Deck Information	5
Engine Information	5
DETAILED INFORMATION	6
Remarks	6
Salon	6
Galley	6
Master Stateroom	6
Master Head	7
Forward Guest Stateroom	7
Guest Stateroom 2	7
Guest Head	7
Cockpit	8
Deck Equipment	8
Electrical System	8
Flybridge	8
Mechanical Equipment and Engine	9
Exclusions	9
Exclusions	9
Disclaimer	9
PHOTOS	10
Dinette	11

---

Washer/Dryer	12
Helm	12
Helm Seating	12
CONTACTS	13
Contact details	13
Telephones	13
Office hours	13
Address	13

---

# SPECIFICATIONS

---

## Overview

---

The 50' Viking Convertible was the most successful three stateroom convertible in production in the 1990's. Late model 50's are hard to find, especially with upgraded 1050 hp MAN engines **(500 hours since recent overhaul)**, undercounter refrigeration, new style flybridge, fiberglass molded cabinetry and an offset queen in the forward stateroom. The interior on this 50' is superb, adding to the newer feel of the vessel. **The topside of this vessel has received a full paint job.** She is in excellent cosmetic and mechanical condition. This 50' has all of the above including a new watermaker and ice chipper (added in 2005) and even flybridge air conditioning as an extra perk. This is a great three stateroom 50' convertible with some features of the modern product for a very competitive price.

## Basic Information

---

**Category:** Sport Fisherman

**Sub Category:** Convertible

**Model Year:** 2000

**Year Built:** 2000

**Country:** United States

**Fly Bridge:** Yes

## Dimensions

---

**LOA:** 50' 0" (15.24m)

**Beam:** 16' 4" (4.98m)

## Speed, Capacities and Weight

---

**Cruise Speed:** 33 Kts. (38 MPH)

**Max Speed:** 37 Kts. (43 MPH)

**Water Capacity:** 208 Gallons

**Fuel Capacity:** 805 Gallons

---

## Accommodations

---

**Total Cabins:** 3

**Total Berths:** 1

**Sleeps:** 1

**Total Heads:** 2

**Crew Berths:** 1

**Crew Sleeps:** 1

**Crew Heads:** 1

---

## Hull and Deck Information

---

**Hull Material:** Fiberglass

---

## Engine Information

---

**Engines:** 2

**Manufacturer:** MAN

**Model:** 2840LE403

**Engine Type:** Inboard

**Fuel Type:** Diesel

## DETAILED INFORMATION

### Remarks

The 50' Viking Convertible was the most successful three stateroom convertible in production in the 1990's. Late model 50's are hard to find, especially with upgraded 1050 hp MAN engines (500 hours since overhaul), undercounter refrigeration, new style flybridge, fiberglass molded cabinetry and an offset queen in the forward stateroom. The interior on this 50' is superb, adding to the newer feel of the vessel. The topside of this vessel has received a full paint job. She is in excellent cosmetic and mechanical condition. This 50' has all of the above including a new watermaker and ice chipper (added in 2005) and even flybridge air conditioning as an extra perk. This is a great three stateroom 50' convertible with some features of the modern product for a very competitive price.

### Salon

- Central vacuum system
- Entertainment center
- 36" TV/VCR upgrade
- Fax machine
- L-shaped upgraded sofa
- Custom Bluewater Teak hi-lo table
- Viking home theatre upgrade w/surround sound
- Carpet runner
- Luxury interior decor package
- CD player
- Stereo system wired throughout staterooms
- Amplifier
- AM/FM tuner with cockpit and bridge speakers
- Blinds, silhouette
- Carpeting (new 2004)
- Speakers and sub woofer

### Galley

- Undercounter refrigeration
- Refrigerator and freezer
- Microwave/convection oven
- Water heater
- Instant hot water
- Amtico Teak and Holly flooring (new in 2004)
- Clothes washer w/ separate dryer
- Sink - Corian
- Garbage disposal
- Stove top
- Upper cabinet storage
- Corian Siena Aurora countertop

### Master Stateroom

- Queen berth
- Ensuite head with shower
- 13" TV/VCR
- Teak night tables
- Starboard credenza w/storage
- Clarion AM/FM stereo and 6 disc CD player
- (2) sets linens and mattress pads
- Hard wired lamps
- (2) Large drawers below master berth

---

## Master Head

- Robbins M12 marble flooring
- Head
- Sink
- Full shower stall
- Storage

---

## Forward Guest Stateroom

- Offset queen berth
- TV
- Indirect lighting
- Hanging locker
- Reading lights
- Custom spreads/shams (new 2004)
- Overhead cabinet storage
- Volume control for salon stereo

---

## Guest Stateroom 2

- Stacked single berths
- Custom spreads/shams (new 2004)
- Overhead lighting
- Drawers below lower bunk
- Television
- Telephone outlet
- 110V outlet
- Hanging locker
- Volume control for salon stereo

---

## Guest Head

- Fiberglass molded full shower stall
- Head
- Sink
- Storage
- Robbins M12 marble flooring

## Cockpit

---

- Refrigerated fishbox
- Custom Tuna chair
- Bait Freezer
- Bait well
- Rod holders (3) in each cockpit haunch
- Cockpit sink
- Fresh & saltwater washdown
- Sliding fiberglass salon door w/Teak interior
- Rupp black w/gold spreader outriggers and center riggers
- Tackle storage
- Extra rod holders in cockpit coaming
- Dockside phone and cable
- 50 amp shorepower cord on Glendinning cablemaster
- New style fiberglass molded cabinet doors-no frames

## Deck Equipment

---

- Anchor
- Transom door
- Bow pulpit
- Saltwater/freshwater washdown system
- Bow rail-brushed aluminum
- Simpson Lawrence windlass
- Bow light
- Halogen light
- Port and starboard running lights

## Electrical System

---

Voltage stabilizer transformer

## Flybridge

---

- Simrad Robertson AP20 autopilot
- Furuno 72-mile radar
- Sea 235 SSB radio
- Motorola TX400 cellular phone
- (2) Stidd helm chairs recovered in spring 2010
- Horn
- KVF satellite phone
- Power assist steering
- Standard Horizon Pmni radio
- Furuno T200 water temp
- Hynautic controls
- Compass
- Furuno color fish finder 292 50/200khz transducers
- New 5212 Garmin GPS/chartplotter
- Northstar 961XD GPS
- Datamarine digital speed and distance log
- Search light
- Flybridge air conditioning
- Full enclosure, 4-sided new in 2005



- Rod storage below bench seats

---

## Mechanical Equipment and Engine

---

Overhaul on 2840LE403 1050 MAN engines (winter 2010) and only 500 hours since overhaul.

- Onan 15kW genset
- Emergency engine stop
- Racor fuel filter
- Oil transfer system
- Start/stop switch
- ZF HA664 transmission
- Fuel prime pumps
- Awlgrip engine room and lazarette
- Dripless stuffing box
- Voltage stabilizer transformer
- Watermaker new in 2005
- Hynautic engine controls
- Oil filter remote
- (3) Bilge pumps
- Freshwater cooling system
- Engine synchronizers
- High water alarm
- Hot water heater
- (2) Bilge blowers
- Trolling valves-pleasure lock
- Rod storage

---

## Exclusions

---

Owner's personal possessions.

---

## Exclusions

---

Owner's personal belongings. Owner's personal toys, including but not limited Jet-skis, Tenders, Sea Bobs, Fishing & Diving equipment.

---

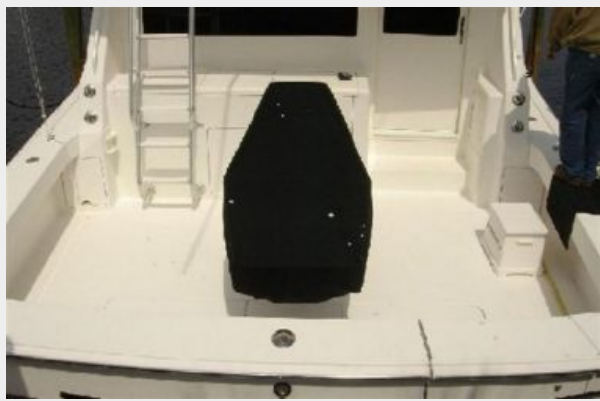
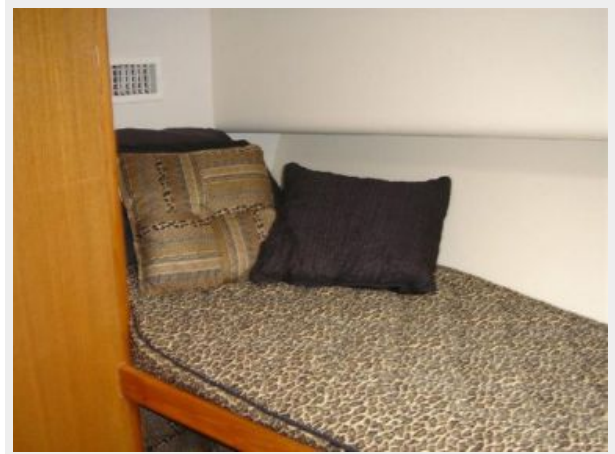
## Disclaimer

---

The Company offers the details of this vessel or yacht in good faith but cannot guarantee or warrant the accuracy of this information nor warrant the condition of the vessel. A buyer should instruct his representatives, agents, or his surveyors, to investigate such details as the buyer desires validated. This vessel or yacht is offered subject to prior sale, price change, or withdrawal without notice.

# PHOTOS





### Dinette



### Washer/Dryer



### Helm



### Helm Seating



# CONTACTS

---

Andrey Shestakov, leading yacht broker of the sales department of Atlantic Yacht and Ship Inc. Atlantic Yacht and Ship Inc., the official representative of the Miami/Fort Lauderdale FL headquarters.

## Contact details

---

Email: [info@atlanticyachtandship.ru](mailto:info@atlanticyachtandship.ru)

Web: [www.atlanticyachtandship.ru/en/](http://www.atlanticyachtandship.ru/en/)

## Telephones

---

USA: +1 954 274-4435

RUS: +7 495 766-6268

## Office hours

---

Monday – Saturday: **9:00 - 21:00** EDT

Sunday: **closed**

## Address

---



Harbour Towne Marina, 850 NE 3rd St,  
STE 213, Dania, FL 33004