



STEPHANIE — POST



Builder: [POST](#)

LOA: 43' 0" (13.11m)

Year Built: 1989

Model: Sport Fisherman

Price: ~~\$249,000 USD~~ Off the market

Location: United States

Our experienced yacht broker, Andrey Shestakov, will help you choose and buy a yacht that best suits your needs **Stephanie — POST** from our catalogue. Presently, at Atlantic Yacht and Ship Inc., we have a wide variety of yachts available on our sale's list. We also work in close contact with all the big yacht manufacturers from all over the world.

If you would like to buy a yacht **Stephanie — POST** or would like help answering any questions concerning purchasing, selling or chartering a yacht, please call **+1 954 274-4435**

TABLE OF CONTENTS

TABLE OF CONTENTS	2
SPECIFICATIONS	3
Basic Information	3
Dimensions	3
Hull and Deck Information	3
Engine Information	3
DETAILED INFORMATION	4
Remarks	4
Salon	4
Galley	4
Electronics and Navigational Equipment	4
Deck Equipment	4
Exclusions	4
Disclaimer	4
PHOTOS	6
Bridge Helm	6
Aft Deck	6
Fwd Deck w/Dinghy	6
Salon Aft	6
Salon Fwd	6
Engine Room	7
CONTACTS	8
Contact details	8
Telephones	8
Office hours	8
Address	8

SPECIFICATIONS

Basic Information

Category: Sport Fisherman

Sub Category: Sedan

Model Year: 1989

Year Built: 1989

Country: United States

Dimensions

LOA: 43' 0" (13.11m)

Hull and Deck Information

Hull Material: Fiberglass

Engine Information

Engines: 2

Manufacturer: Detroit Diesel

Model: 671TIB

Engine Type: Inboard

Fuel Type: Diesel

DETAILED INFORMATION

Remarks

Twin 671 TIB's with approximately 200 hrs. SMOH; Northern Lights generator (185 hrs.); CruisAire A/C; Avon hard bottom w/Mercury 15 hp. outboard; much more.

Salon

Wet Bar to starboard JVC TV Liquor cabinet DVD/CD player VHS Under sofa storage

Galley

Litton microwave Empress 3-burner cooktop w/oven Whirlpool refrigerator/freezer SS sink

Electronics and Navigational Equipment

Furuno Radar 30 Furuno GPS navigator Furuno Nav Net C-Map ICOM VHF Robertson AP20 Danforth compass Trim tabs Searchlight - hand held 3-Side curtains - new Cushions - new Rod storage (2) Helm chairs

Deck Equipment

Ideal windlass w/deck control - new Bruce anchor Danforth anchor Davit - low profile - 300 lb. Dual horns Avon hard bottom dinghy Mercury 15 hp. outboard

Exclusions

Owner's personal belongings. Owner's personal toys, including but not limited Jet-skis, Tenders, Sea Bobs, Fishing & Diving equipment.

Disclaimer

The Company offers the details of this vessel or yacht in good faith but cannot guarantee or warrant the accuracy of this information nor warrant the condition of the vessel. A buyer should

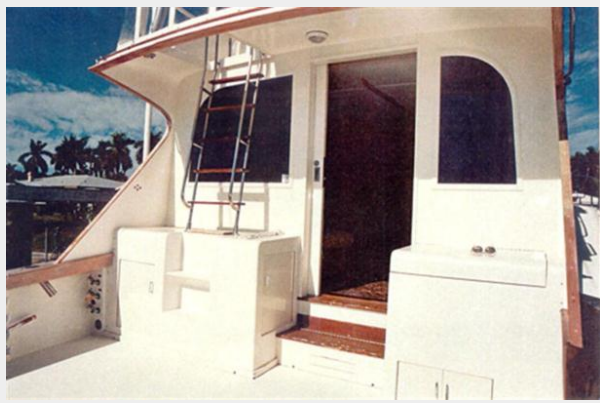
instruct his representatives, agents, or his surveyors, to investigate such details as the buyer desires validated. This vessel or yacht is offered subject to prior sale, price change, or withdrawal without notice.

PHOTOS

Bridge Helm



Aft Deck



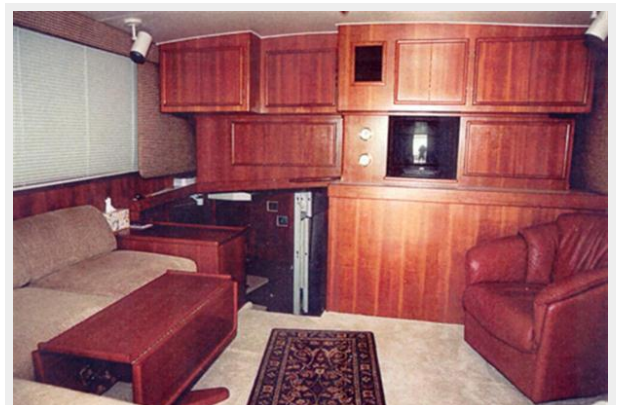
Fwd Deck w/Dinghy



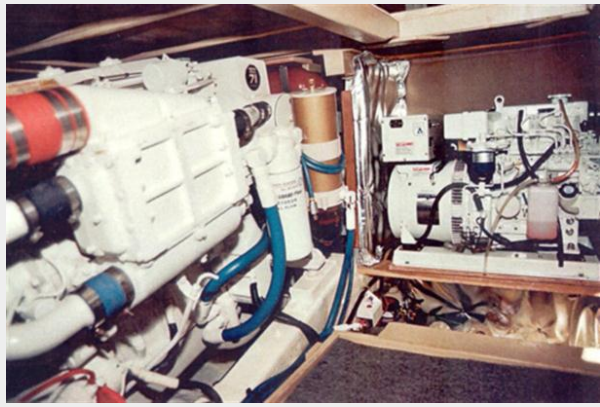
Salon Aft



Salon Fwd



Engine Room



CONTACTS

Andrey Shestakov, leading yacht broker of the sales department of Atlantic Yacht and Ship Inc. Atlantic Yacht and Ship Inc., the official representative of the Miami/Fort Lauderdale FL headquarters.

Contact details

Email: info@atlanticyachtandship.ru

Web: www.atlanticyachtandship.ru/en/

Telephones

USA: **+1 954 274-4435**

RUS: **+7 495 766-6268**

Office hours

Monday – Saturday: **9:00 - 21:00** EDT

Sunday: **closed**

Address



Harbour Towne Marina, 850 NE 3rd St,
STE 213, Dania, FL 33004