



PRIMA DONNA II — FORMOSA



Builder: FORMOSA

Year Built: 1985

Model: Cruising Ketch

Price: ~~\$299,000 USD~~ Off the market

Location: British Virgin Islands

LOA: 68' 0" (20.73m)

Beam: 17' 0" (5.18m)

Max Draft: 7' 5" (2.26m)

Our experienced yacht broker, Andrey Shestakov, will help you choose and buy a yacht that best suits your needs **PRIMA DONNA II — FORMOSA** from our catalogue. Presently, at Atlantic Yacht and Ship Inc., we have a wide variety of yachts available on our sale's list. We also work in close contact with all the big yacht manufacturers from all over the world.

If you would like to buy a yacht **PRIMA DONNA II — FORMOSA** or would like help answering any questions concerning purchasing, selling or chartering a yacht, please call **+1 954 274-4435**

TABLE OF CONTENTS

TABLE OF CONTENTS	2
SPECIFICATIONS	4
Overview	4
Basic Information	4
Dimensions	4
Speed, Capacities and Weight	4
Accommodations	4
Hull and Deck Information	5
Engine Information	5
DETAILED INFORMATION	6
Accommodations/Walkthrough	6
Salon	6
Galley	6
Navigation and Electronics	6
Pilothouse	7
Engine and Mechanical Equipment	7
Electrical Equipment	7
Deck and Hull	7
Safety Equipment	8
Sails and Rigging	8
Additional Equipment	8
Work Completed - 2013	9
Remarks	9
Exclusions	9
PHOTOS	10
PORTSIDE DINING AREA	10
STARBOARD DINING AREA	10

FORWARD DOUBLE BERTH w/ENSUITE BATH	10
DOUBLE BERTH w/OPTIONAL ADD-ON BERTH	10
HEAD	11
AFT DOUBLE BERTH	11
WHEELHOUSE	11
AFT DECK	11
HAULED OUT	12
HAULED OUT	12
HAULED OUT	12
AT SAIL	12
PROFILE - SALES FURLED	12
CONTACTS	13
Contact details	13
Telephones	13
Office hours	13
Address	13

SPECIFICATIONS

Overview

The Formosa 68, PRIMA DONNA II, has just had a full hull restoration, which focused on a full paint job that included a new bottom. She is ideally set up for charter with accommodations for eight guests in four double cabins. Each cabin features ensuite electric heads with showers. Air conditioning, tender w/70 hp motor, water skis, snorkeling, and scuba diving gear are a few of the extras that make PRIMA DONNA the ideal yacht for both personal and charter use.

Basic Information

Year Built: 1985

Category: Cruising Ketch

Model Year: 1985

Year Built: 1985

Country: British Virgin Islands

Fly Bridge: No

Cockpit: No

Helipad: No

Dimensions

LOA: 68' 0" (20.73m)

LOD: 68' 0" (20.73m)

Beam: 17' 0" (5.18m)

Max Draft: 7' 5" (2.26m)

Speed, Capacities and Weight

Displacement: 122000 Pounds

Gross Tonnage: 59 Pounds

Water Capacity: 300 Gallons

Fuel Capacity: 320 Gallons

Accommodations

Total Cabins: 4

Total Berths: 8

Sleeps: 8

Total Heads: 4

Captain Cabin: False

Crew Cabin: 1

Crew Berths: 2

Crew Sleeps: 2

Crew Heads: 1

Hull and Deck Information

Hull Material: Fiberglass

Engine Information

Engines: 1

Manufacturer: Ford Lehman

Model: Turbo CA

Engine Type: Inboard

Fuel Type: Diesel

DETAILED INFORMATION

Accommodations/Walkthrough

In the Pilothouse are two bunks are on the left and right side. On the right side is the steering with all the navigation instruments. Stairs lead into the main saloon, on the portside is an L-shaped table which seats a party of eight and on the starboard side is a smaller dinette, which seats four. There is a large TV for entertainment as well as a middle console stereo with CD, 200 Watt with eight speakers. Two staterooms are located forward, both of which have suite baths. To port is the galley and to starboard the crew cabin. Kitchen is equipped with two deep freezers, three fridges, four-burner stove and a microwave. The teak deck on the starboard side is brand new. There is a large table and chairs, which provides seating for a party of twelve.
@PAGEBREAK@

Salon

- All wood work refinished (2011)

Galley

- (2) Deep freezers
- (3) Refrigerators
- 4-Burner stove/oven
- Microwave
- Coffee maker

Navigation and Electronics

- 48 mile Furuno radar
- Wind and speed indicators
- Furuno 24 mile radar
- Navigation System, complete
- Radio
- (1) Garmin GPS
- (1) Magellan GPS
- Depth sounder
- VHF marine radio
- Speed log

- Auto helm 6000, autopilot
- Auto Pilot
- B&G instruments
- Furuno weather fax
- Furuno ADF
- Satcom Phone
- Navigation lights (2007)
- Stereo with CD player/radio, and 8 speakers (2007)
- 25" TV – DVD/Video (2007)
- Charts and Guides; Florida/Bahamas/Virgin Islands/St. Martin to Trinidad
- Pair of binoculars

Pilothouse

- All wood work refinished (2011)
- (2) Beds are on the left and right side

Engine and Mechanical Equipment

- Engine: Ford Lehman engine, 200 hours since major overhaul
- Air conditioning: all cabins and salon
- Hot Water System: 40 gal, 110V
- Watermaker, 700 g.p.d.
- Hydraulic steering system (new 2011)

Electrical Equipment

- Northern Lights generator 20kW/110V (2005)
- 12V DC/110V AC System
- 12/26/240V Power system
- 12V Marine Battery
- Gel 5 pieces 200 AH
- (2) Starter Batteries 200 AH
- Interface inverter/charger, 200A/110V/12V (2008)
- (4) House batteries, 2000 Am/h (2008)
- (2) Start batteries, 360 Am/h (2007)

Deck and Hull

- Hauled, painted and Awlgrippped (2003)
- New Awlgrip (Sept 2006)
- (2) Bruce 100lb. anchors
- Anchor windlass, 12V
- Caribe C15 tender with Yamaha 70hp outboard (2003)
- 15' Avon dinghy with center console (2006)
- Mariner 50hp outboard (2008)

Safety Equipment

- Flare gun and flares
- Life jackets
- 8-man life raft

Sails and Rigging

- 12 self-tailing winches
- In mast furling mainsail
- Main: 2002 roller furling
- Genoa: 2003 roller furling
- Mizzen: 2005
- Staysail: 2004 roller furling

Additional Equipment

- Exterior speakers, 200 watt each
- Workshop with all tools and spare parts
- Barbecue
- Washing machine
- (4) Sets of water skis
- Towing tube
- Wakeboard

Dive Equipment:

- (1) Bauer compressor 190 lt/min
- (5) BCs/Regs (2007)
- (8) Tanks yellow (2007)
- New snorkel gear (2007)
- (5) Diving suits (2007)

- Fishing gear
- Floating mat @PAGEBREAK@

Work Completed - 2013

- Full hull paint job in AwlgripNew bottom job
- New high pressure pump watermaker
- Hull restoration
- Teak decking and deck stainless refreshed

Remarks

The Formosa 68, PRIMA DONNA II, has just had a full hull restoration, which focused on a full paint job that included a new bottom. She is ideally set up for charter with accommodations for eight guests in four double cabins. Each cabin features ensuite electric heads with showers. Air conditioning, tender w/70 hp motor, water skis, snorkeling, and scuba diving gear are a few of the extras that make PRIMA DONNA the ideal yacht for both personal and charter use.

Not for sale to US residents while in US waters.

Exclusions

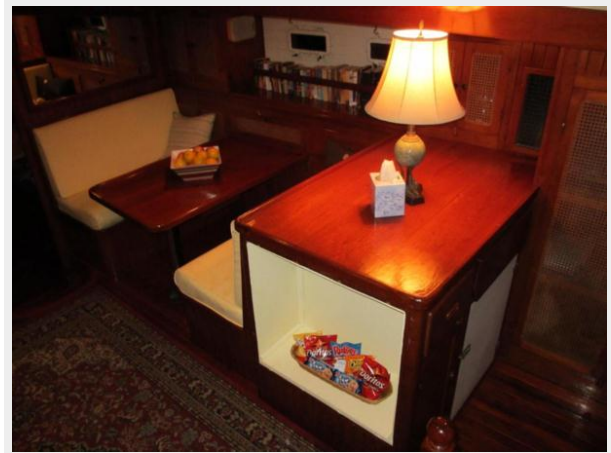
Potential purchasers should assume that items on the vessel at the time of viewing, but not specifically listed on this sheet, are not included with the sale of the yacht. These specifications are believed to be true and correct but cannot be guaranteed.

PHOTOS

PORTSIDE DINING AREA



STARBOARD DINING AREA



FORWARD DOUBLE BERTH w/ENSUITE BATH



DOUBLE BERTH w/OPTIONAL ADD-ON BERTH



AFT DOUBLE BERTH



HEAD



WHEELHOUSE



AFT DECK



HAULED OUT



HAULED OUT



HAULED OUT



AT SAIL



PROFILE - SALES FURLED



CONTACTS

Andrey Shestakov, leading yacht broker of the sales department of Atlantic Yacht and Ship Inc. Atlantic Yacht and Ship Inc., the official representative of the Miami/Fort Lauderdale FL headquarters.

Contact details

Email: info@atlanticyachtandship.ru

Web: www.atlanticyachtandship.ru/en/

Telephones

USA: +1 954 274-4435

RUS: +7 495 766-6268

Office hours

Monday – Saturday: **9:00 - 21:00** EDT

Sunday: **closed**

Address



Harbour Towne Marina, 850 NE 3rd St,
STE 213, Dania, FL 33004