



## JMC 60 — BERTRAM



**Судостроитель:** BERTRAM

**Год постройки:** 1989

**Модель:** Sport Fisherman

**Цена:** ~~\$399,000 USD~~ Продано

**Местонахождение:** United States

**Длина общая:** 60' 0" (18.29m)

**Ширина:** 16' 11" (5.16m)

**Мин. осадка:** 5' 6" (1.68m)

**Крейс. скорость:** 26 Kts. (30 MPH)

**Макс. скорость:** 30 Kts. (35 MPH)

Купить **JMC 60 — BERTRAM** а также выбрать подходящую вам яхту из нашего каталога яхт вам поможет опытный яхтенный брокер Андрей Шестаков. На сегодняшний день компания **Atlantic Yacht and Ship Inc.** имеет большое количество яхт в собственном списке продаж, а также тесно сотрудничает со всеми крупными яхтенными производителями по всему миру.

Для того чтобы купить яхту **JMC 60 — BERTRAM** а также проконсультироваться по любому вопросу связанному с покупкой, продажей, чартером яхт позвоните по телефону **8 800 234-4456** (бесплатно по РФ).

# ОГЛАВЛЕНИЕ

ОГЛАВЛЕНИЕ	2
ХАРАКТЕРИСТИКИ	4
Основная информация	4
Размеры	4
Скорость, вместимость и масса	4
Размещение	4
Корпус и палуба	5
Информация о двигателе	5
ПОДРОБНОЕ ОПИСАНИЕ	6
Vessel Walkthrough	6
Salon	6
Galley	6
Guest Stateroom	6
Master Stateroom	7
VIP Stateroom	7
Cockpit	7
Fly Bridge	7
Electronics	7
Engine Room	8
Features	8
Remarks	8
ФОТОГРАФИИ	9
GUEST HEAD	10
GUEST HEAD	10
MASTER HEAD	11
Bait Freezer	12
Bait Prep Center	12

---

Helm Station	12
Helm Station	12
Bridge Seating	13
Port Engine	13
Stbd Engine	13
OutRiggers	14
Generator	14
Tackle Center	14
Live Well	14
VIP Head	15
КОНТАКТЫ	16
Контактная информация	16
Телефоны	16
Время работы	16
Адрес	16

# ХАРАКТЕРИСТИКИ

## Основная информация

Тип судна: Sport Fisherman

Подкатегория: Convertible

Модельный год: 1990

Год постройки: 1989

Страна: United States

Регистрационный номер: 976256

Открытая палуба мостика: Да

## Размеры

Длина общая: 60' 0" (18.29m)

Длина по ватерлинии: 60' 0" (18.29m)

Длина палубы: 60' 0" (18.29m)

Ширина: 16' 11" (5.16m)

Мин. осадка: 5' 6" (1.68m)

Длина привального бруса: 60' 0" (18.29m)

## Скорость, вместимость и масса

Крейс. скорость: 26 Kts. (30 MPH)

Макс. скорость: 30 Kts. (35 MPH)

Водоизмещение: 93500 Pounds

Вместимость воды: 250 Gallons

Объем топливного бака: 1630 Gallons

## Размещение

Всего кают: 3

Всего коек: 3

Спальные места: 6

Всего ком. состава: 3

Койки экипажа: 1

Спальных мест экипажа: 1

**Комм. состав экипажа:** 1

## Корпус и палуба

---

**Материал корпуса:** Fiberglass

**Комплектация корпуса:** Modified V-Hull

## Информация о двигателе

---

**Двигатели:** 2

**Производитель:** Detroit Diesel

**Модель:** 16V92

**Тип двигателя:** Inboard

**Тип топлива:** Diesel

---

# ПОДРОБНОЕ ОПИСАНИЕ

---

---

## Vessel Walkthrough

---

You enter the vessel from the cockpit into the main salon. The salon is comfortable and inviting. A half counter joins the salon and galley. Together they provide an atmosphere conducive to the cruiser or fisherman. Continuing Fwd, 3 steps lead down to the accommodations. The first door to Stbd is hallway access to a full head. This head also is accessed through a private door which leads to the starboard guest stateroom. This Stbd guest stateroom has over under bunks. Across the hall to port is the Master stateroom. This stateroom features a private head, entertainment center and huge bed. Continuing Fwd, you will find a stacked washer/dryer to Stbd. Finally, all the way Fwd there is a third Stateroom. This VIP Suite has an island Queen Berth and private head.

---

## Salon

---

The spacious Salon features an L-Shaped Sofa to port, handsome oversized coffee table, and two comfortable swivel chairs. The wood is a factory "Pickled" Maple throughout. Satellite TV and Bose surround sound help to create a comfortable cruising environment. Neatly concealed in the salon ceiling is overhead storage for fishing rods.

---

## Galley

---

The galley provides you with all the amenities you have at home, features include:

- Full size refrigerator/freezer
- Full size Dishwasher
- Trash compactor
- Microwave/convection oven
- 4 burner cook top
- Dual sinks
- Pantry and ample storage
- Wood floor
- Solid surface countertops

---

## Guest Stateroom

---

The Guest Stateroom to port has nice wide over/under bunk beds. In-room access to a shared/day head, aromatic cedar lined closet and plenty of storage help to make this room

suitable for anyone.

---

## Master Stateroom

---

Master Stateroom, is located to port, she boast a tapered King size bed, aromatic cedar lined hanging closet and an Ensuite head.

- SAT TV, DVD, VHS
- Individual climate controls
- Ample storage

---

## VIP Stateroom

---

The VIP Stateroom is located forward. She features an Island Queen berth, large aromatic cedar lined closet and a private head. Storage abounds and privacy is yours.

---

## Cockpit

---

The cockpit is set up as a cruising vessel, but could be easily converted to a big game fishing machine. She features a deep "never used" bait freezer, bait prep center, and tackle storage. She also has a large circular live well and a transom door w/gate. She has a handsome teak cockpit sole under which houses the Lazarette, spare props and a huge macerated fish box. Brand new cockpit combing and rope lighting finish off the spacious alfresco dining area or fishing nerve center. Finally a half cockpit sunshade offers some shelter from the hot sun. Classic big game fighting chair added 4/1/07 and brand new custom pipe welders outriggers.

---

## Fly Bridge

---

The flybridge is truly massive, boasting 2 padded helm chairs and fwd seating for at least 6, and a collapsible cocktail table. Visibility from the helm is excellent. The electronics are laid out well and have been updated. She has a custom weather resistant chart table to Stbd for the navigator.

---

## Electronics

---

- Northstar 961XD
- Northstar 951X

- **Furuno Radar**
- **Raytheon Speed/Depth**
- **Simrad Autopilot**
- **ICOM VHF/Standard VHF**
- **SEA SSB Radio**
- **ACR Spotlight**
- **Bennett Trim Tabs**
- **Ritchie Compass**
- **Ensign Digital Tachs/Synch**

---

## Engine Room

---

- **Twin Detroit Diesel 16V92 1400hp**
- **700 hrs SMOH**
- **Twin 15kw Onan Generators (2030 hrs/2011 hrs)**
- **Dual Racor fuel filtration**
- **Speedair Air Compressor**
- **Cruiseair AC**
- **Engine room fire suppression system**
- **Mech engine room gauges**
- **Oil Changing system**

---

## Features

---

- **Powder coated Half Tower w/hard top**
- **Full Isinglass enclosure**
- **1/3 Cockpit Sunshade**
- **6 person Switlik life raft**

---

## Remarks

---

**She has been used strictly as a light cruising vessel her whole life. Classic chair and custom riggers just added in April of 07. This is only vessel's 2<sup>nd</sup> owner! It was maintained w/open check book by same Captain for 13 years!**



# ФОТОГРАФИИ



### GUEST HEAD



### GUEST HEAD



## MASTER HEAD



**Bait Freezer**



**Bait Prep Center**



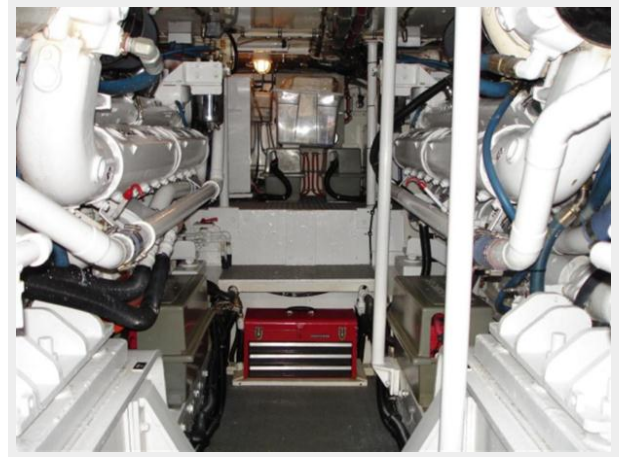
**Helm Station**



**Helm Station**



### Bridge Seating



### Port Engine



### Stbd Engine



**Generator**



**OutRiggers**



**Tackle Center**



**Live Well**



## VIP Head



# КОНТАКТЫ

---

Андрей Шестаков (Andrey Shestakov) – ведущий яхтенный брокер отдела продаж яхт и судов компании Atlantic Yacht and Ship Inc. Официальный представитель Atlantic Yacht and Ship Inc. для русскоговорящих клиентов в центральном офисе компании в Майами/Форт Лодердейл/Флорида/США.

## Контактная информация

---

Email: [info@atlanticyachtandship.ru](mailto:info@atlanticyachtandship.ru)

Web: [www.atlanticyachtandship.ru](http://www.atlanticyachtandship.ru)

## Телефоны

---

Бесплатный звонок по России: **8 800 234-4456**

Москва и Московская область: **+7 495 766-6268**

Краснодарский край: **+7 918 465-6644**

США, Майами, Флорида: **+1 954 274-4435**

## Время работы

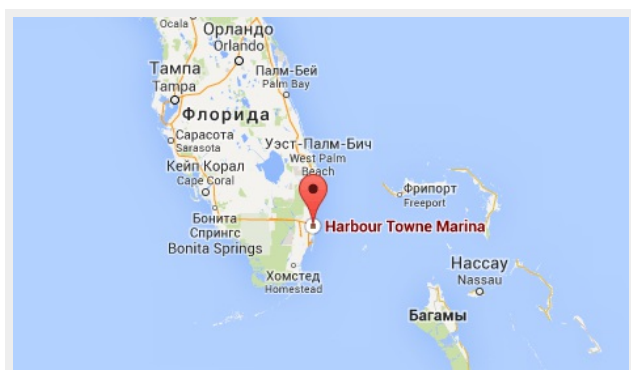
---

Понедельник – Суббота: **9:00 - 21:00 EDT**

Воскресенье: **Закрыто**

## Адрес

---



Harbour Towne Marina, 850 NE 3rd St,  
STE 213, Dania, FL 33004