



## FIELD TRIP — BERTRAM



**Builder:** BERTRAM

**Year Built:** 1985

**Model:** Motor Yacht

**Price:** \$29,900 USD

**Location:** United States

**LOA:** 28' 0" (8.53m)

**Beam:** 11' 0" (3.35m)

**Max Draft:** 2' 8" (0.81m)

**Cruise Speed:** 18 Kts. (21 MPH)

**Max Speed:** 27 Kts. (31 MPH)

Our experienced yacht broker, Andrey Shestakov, will help you choose and buy a yacht that best suits your needs **Field Trip — BERTRAM** from our catalogue. Presently, at Atlantic Yacht and Ship Inc., we have a wide variety of yachts available on our **sale's list**. We also work in close contact with all the big yacht manufacturers from all over the world.

If you would like to buy a yacht **Field Trip — BERTRAM** or would like help answering any questions concerning purchasing, selling or chartering a yacht, please call **+1 954 274-4435**

---

# TABLE OF CONTENTS

---

TABLE OF CONTENTS	2
SPECIFICATIONS	3
Overview	3
Basic Information	3
Dimensions	3
Speed, Capacities and Weight	3
Accommodations	3
Hull and Deck Information	4
Engine Information	4
DETAILED INFORMATION	5
Remarks	5
Vessel Walkthrough	5
Features	5
Deck Equipment	5
Electronics and Navigational Equipment	6
Electrical System	6
Fishing Equipment	6
Engine /Mechanical Equipment	6
Exclusions	6
Disclaimer	6
PHOTOS	7
CONTACTS	9
Contact details	9
Telephones	9
Office hours	9
Address	9

---

# SPECIFICATIONS

---

## Overview

---

This classic Bertram Flybridge Cruiser has had a major upgrading (2006). This low draft, fast and economical sportfish/cruiser is ideally suited to the South Florida waters. These boats are fun, maneuverable and have a Bertram heritage which says a lot for this beauty. The owner is motivated to sell! **TRADES CONSIDERED**

## Basic Information

---

**Category:** Motor Yacht

**Model Year:** 1985

**Year Built:** 1985

**Country:** United States

**Fly Bridge:** Yes

## Dimensions

---

**LOA:** 28' 0" (8.53m)

**Beam:** 11' 0" (3.35m)

**Max Draft:** 2' 8" (0.81m)

**MFG Length:** 28' 0" (8.53m)

## Speed, Capacities and Weight

---

**Cruise Speed:** 18 Kts. (21 MPH)

**Max Speed:** 27 Kts. (31 MPH)

**Displacement:** 12000 Pounds

**Water Capacity:** 85 Gallons

**Fuel Capacity:** 180 Gallons

## Accommodations

---

**Total Cabins:** 1

**Sleeps:** 4

---

## Hull and Deck Information

---

**Hull Material:** Fiberglass

---

## Engine Information

---

**Engines:** 2

**Manufacturer:** Mercruiser

**Engine Type:** Inboard

**Fuel Type:** Gas

---

# DETAILED INFORMATION

---

## Remarks

---

This classic Bertram Flybridge Cruiser has had a major upgrading (2006). This low draft, fast and economical sportfish/cruiser is ideally suited to the South Florida waters. These boats are fun, maneuverable and have a Bertram heritage which says alot for this beauty. The owner is motivated to sell! **TRADES CONSIDERED**

## Vessel Walkthrough

---

This classic pocket cruiser had a major redo in 2006:

- Complete awlgrip
- New A/C
- New refrigerator
- New engines (150 hours)
- New bimini

## Features

---

- Accommodations (main cabin)
- V-berth with commodious hatch/opening
- Head/shower with pressure hot and cold water
- Electric stove w/2 burners
- Microwave
- Dining area with wraparound cushions and dining table (this area converts into sleeping facilities for (2) people

## Deck Equipment

---

- New bimini top
- Navigation/search lights
- Swim platform
- Docking lines
- Fiberglass construction
- Life jackets
- Cockpit step box
- Fenders
- Anchor

---

## Electronics and Navigational Equipment

---

- Ritchie 5" compass
- GPS
- Standard VHF (above and below)
- Stereo (above and below)

---

## Electrical System

---

- 12V DC electrical system
- 110V AC electrical system
- Dockside electrical cable

---

## Fishing Equipment

---

- 2x22 outriggers
- (4) rod holdets

---

## Engine /Mechanical Equipment

---

- 150 hours since replacement
- Halon fire suppression
- Bilge blower
- Bilge pumps (auto and manual)
- Fuel shutoff valves

---

## Exclusions

---

Owner's personal belongings. Owner's personal toys, including but not limited Jet-skis, Tenders, Sea Bobs, Fishing & Diving equipment.

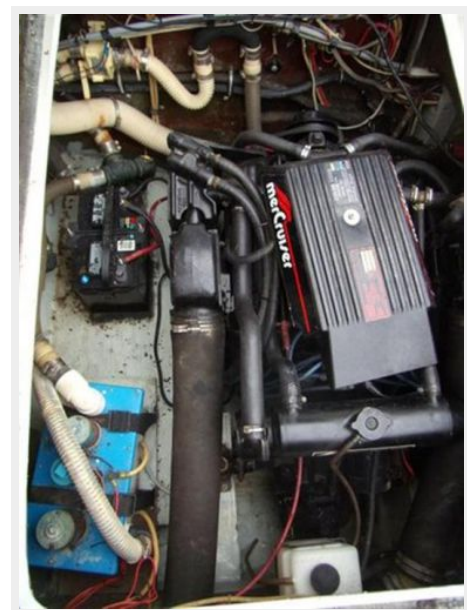
---

## Disclaimer

---

The Company offers the details of this vessel or yacht in good faith but cannot guarantee or warrant the accuracy of this information nor warrant the condition of the vessel. A buyer should instruct his representatives, agents, or his surveyors, to investigate such details as the buyer desires validated. This vessel or yacht is offered subject to prior sale, price change, or withdrawal without notice.

# PHOTOS







# CONTACTS

---

Andrey Shestakov, leading yacht broker of the sales department of Atlantic Yacht and Ship Inc. Atlantic Yacht and Ship Inc., the official representative of the Miami/Fort Lauderdale FL headquarters.

## Contact details

---

Email: [info@atlanticyachtandship.ru](mailto:info@atlanticyachtandship.ru)

Web: [www.atlanticyachtandship.ru/en/](http://www.atlanticyachtandship.ru/en/)

## Telephones

---

USA: +1 954 274-4435

RUS: +7 495 766-6268

## Office hours

---

Monday – Saturday: **9:00 - 21:00** EDT

Sunday: **closed**

## Address

---



Harbour Towne Marina, 850 NE 3rd St,  
STE 213, Dania, FL 33004