



NO NAME — CUSTOM



Builder: CUSTOM

Year Built: 2006

Model: Cruising Sailboat

Price: ~~1 330 000 € EUR~~ Off the market

Location: Spain

LOA: 78' 0" (23.77m)

Beam: 20' 9" (6.30m)

Min Draft: 8' 9" (2.67m)

Cruise Speed: 10 Kts. (12 MPH)

Max Speed: 12 Kts. (14 MPH)

Our experienced yacht broker, Andrey Shestakov, will help you choose and buy a yacht that best suits your needs **No Name — CUSTOM** from our catalogue. Presently, at Atlantic Yacht and Ship Inc., we have a wide variety of yachts available on our **sale's** list. We also work in close contact with all the big **yacht manufacturers** from all over the world.

If you would like to buy a yacht **No Name — CUSTOM** or would like help answering any questions concerning purchasing, selling or chartering a yacht, please call **+1 954 274-4435**

TABLE OF CONTENTS

TABLE OF CONTENTS	2
SPECIFICATIONS	4
Basic Information	4
Dimensions	4
Speed, Capacities and Weight	4
Accommodations	4
Hull and Deck Information	5
Engine Information	5
DETAILED INFORMATION	6
Accommodations	6
Galley	6
Mechanical Equipment	6
Deck Equipment and Rigging	6
Navigation and Electronics	7
Safety and Fire Protection	7
Exclusions	7
Disclaimer	7
PHOTOS	8
Bow View	8
Foredeck	8
Aft Deck	8
Helm and Cockpit	8
Stern View and Passerelle	9
Layout	9
Forward Master	9
Forward Master	9
One Master Head	10

Forward Master	10
One Master Shower	10
Guest Double Cabin	10
Guest Double Cabin	11
Guest Twin Cabin	11
One Guest Head	11
Guest Twin Cabin	11
One Guest Shower	12
Galley	12
Saloon	12
Saloon	12
Under Sail	13
Saloon	13
Aft Master	13
Aft Master	13
Aft Master	14
CONTACTS	15
Contact details	15
Telephones	15
Office hours	15
Address	15

SPECIFICATIONS

Basic Information

Category: Cruising Sailboat

Model Year: 2006

Year Built: 2006

Country: Spain

Cockpit: Yes

Dimensions

LOA: 78' 0" (23.77m)

Beam: 20' 9" (6.30m)

Min Draft: 8' 9" (2.67m)

Speed, Capacities and Weight

Cruise Speed: 10 Kts. (12 MPH)

Cruise Speed Range: 550

Max Speed: 12 Kts. (14 MPH)

Gross Tonnage: 97 Pounds

Water Capacity: 726.473143 Gallons

Holding Tank: 673.6387326 Gallons

Fuel Capacity: 792.516156 Gallons

Accommodations

Total Cabins: 4

Total Berths: 8

Sleeps: 8

Total Heads: 4

Crew Cabin: 2

Crew Berths: 3

Crew Sleeps: 3

Crew Heads: 2

Hull and Deck Information

Hull Material: Mahogany

Deck Material: Teak

Engine Information

Engines: 2

Manufacturer: Iveco

Engine Type: Inboard

Fuel Type: Diesel

DETAILED INFORMATION

Accommodations

This beautiful mahogany ketch has four double cabins: three with king size beds, and one with twin beds. Each cabin is air conditioned, and has a color TV, an en suite bathroom, and shower facilities. She is also equipped with two crew cabins (one single and one double) and two crew heads.

Galley

- Inox four burner electrical stove
- Beko oven
- Two refrigerators
- One deep freezer
- Kale icemaker
- Beko dishwasher

Mechanical Equipment

- Two IVECO 210 HP diesel engines
- Fuel consumption: 50 L per hour
- 10 knot cruise speed
- 12 knot max speed
- Range: 550 miles
- Two 17.5 KW Mitsubishi generators
- Master 24 V/100 A battery charger
- Vetus bow thruster 225 KGF
- Electric anchor windlass
- Heating and air-conditioning system in each cabin

Deck Equipment and Rigging

- 2 genoas and 2 main (fore mast and mizzen mast)
- Sail area: 350 sqm
- Material: Dracom
- Winches: 3 electrical (Antal 60 STE) and 3 mechanical (Antal 40 ST)
- Data DZC 1002 hydraulic windlass

- Chain: 14 mm x 100m and 14 mm x 120m, galvanized
- Dinghy: 4,20m Joker with 50 HP 4-stroke Mercury OB

Navigation and Electronics

- Log: Simrad
- GPS, chart plotter, and radar: Simrad CX 44
- Depth sounder: Plastimo Nawman
- Compass: Plastimo Offshore 135
- Satellite: KVH Tracvision G6
- VHF: Simrad RD 68
- Wind direction: Simrad 1S 15

Safety and Fire Protection

- Life raft: 1 x 12 person (Lalizas)
- Fire Extinguishers: 2 x 6 kg in engine room; 4 x 6 kg for general use; and 4 x 2 kg for cabins

Exclusions

Owner's personal belongings. Owner's personal toys, including but not limited Jet-skis, Tenders, Sea Bobs, Fishing & Diving equipment.

Disclaimer

The Company offers the details of this vessel or yacht in good faith but cannot guarantee or warrant the accuracy of this information nor warrant the condition of the vessel. A buyer should instruct his representatives, agents, or his surveyors, to investigate such details as the buyer desires validated. This vessel or yacht is offered subject to prior sale, price change, or withdrawal without notice.

PHOTOS

Bow View



Foredeck



Aft Deck



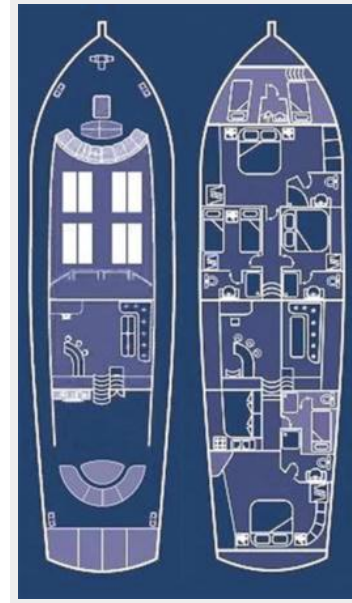
Helm and Cockpit



Stern View and Passerelle



Layout



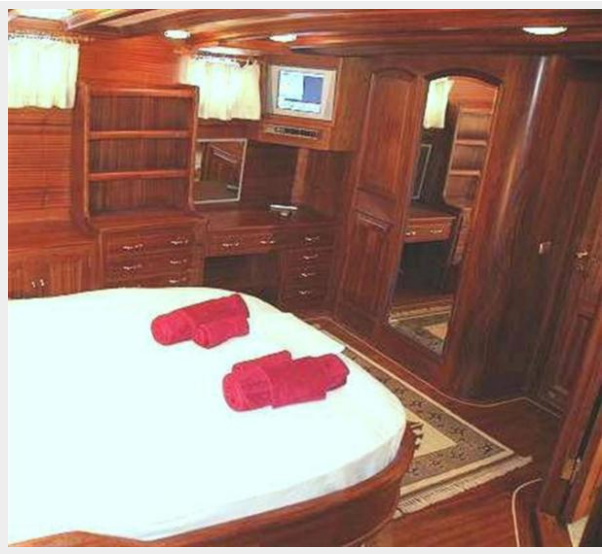
Forward Master



Forward Master



Forward Master



One Master Head



One Master Shower



Guest Double Cabin



Guest Double Cabin



Guest Twin Cabin



One Guest Head



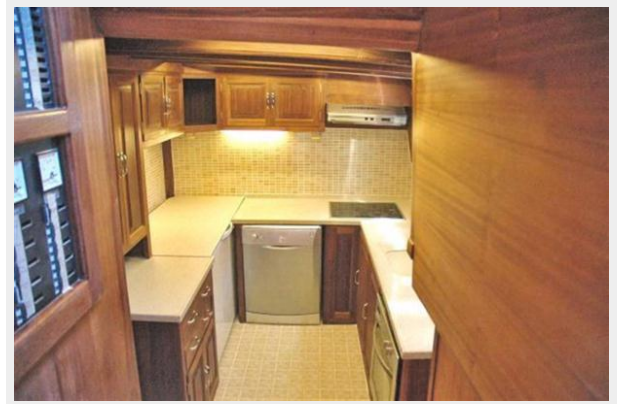
Guest Twin Cabin



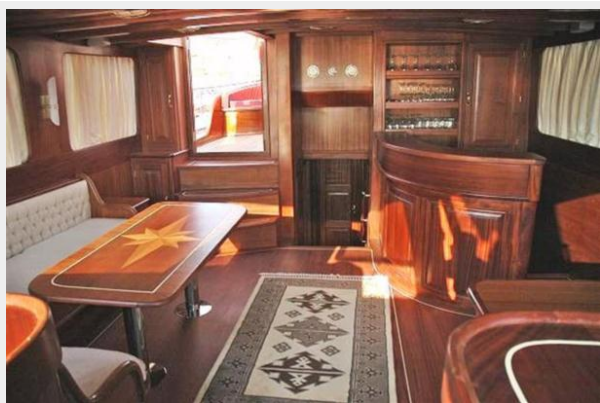
One Guest Shower



Galley



Saloon



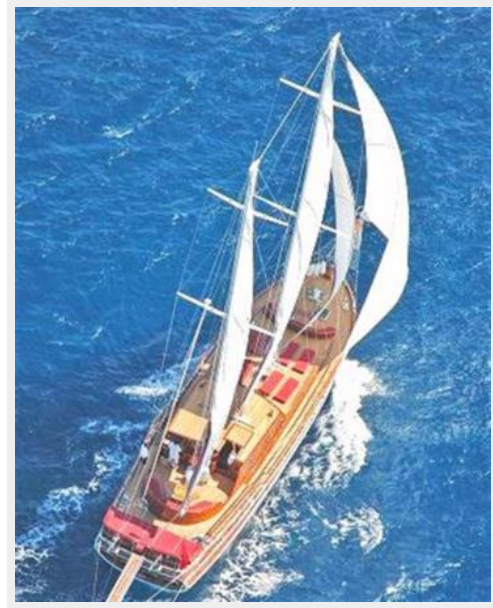
Saloon



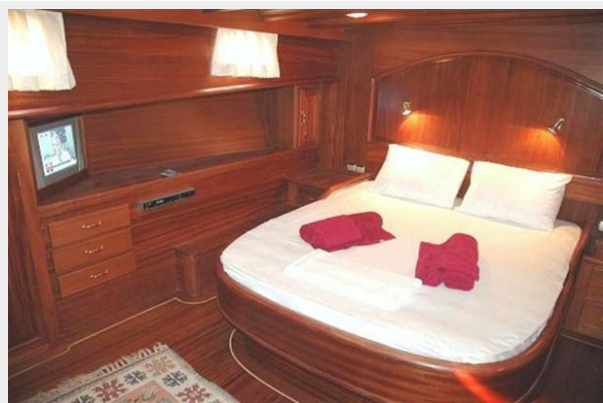
Saloon



Under Sail



Aft Master



Aft Master



Aft Master



CONTACTS

Andrey Shestakov, leading yacht broker of the sales department of Atlantic Yacht and Ship Inc. Atlantic Yacht and Ship Inc., the official representative of the Miami/Fort Lauderdale FL headquarters.

Contact details

Email: info@atlanticyachtandship.ru

Web: www.atlanticyachtandship.ru/en/

Telephones

USA: +1 954 274-4435

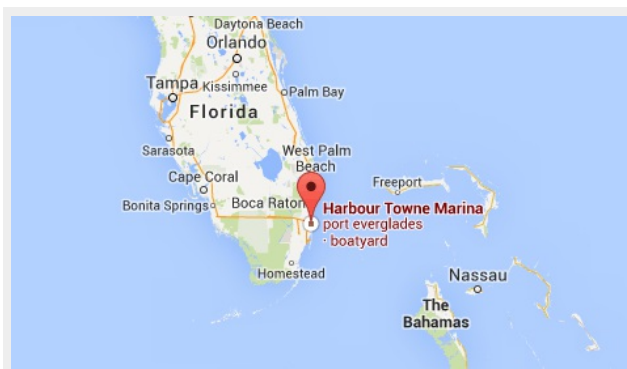
RUS: +7 495 766-6268

Office hours

Monday – Saturday: **9:00 - 21:00** EDT

Sunday: **closed**

Address



Harbour Towne Marina, 850 NE 3rd St,
STE 213, Dania, FL 33004